

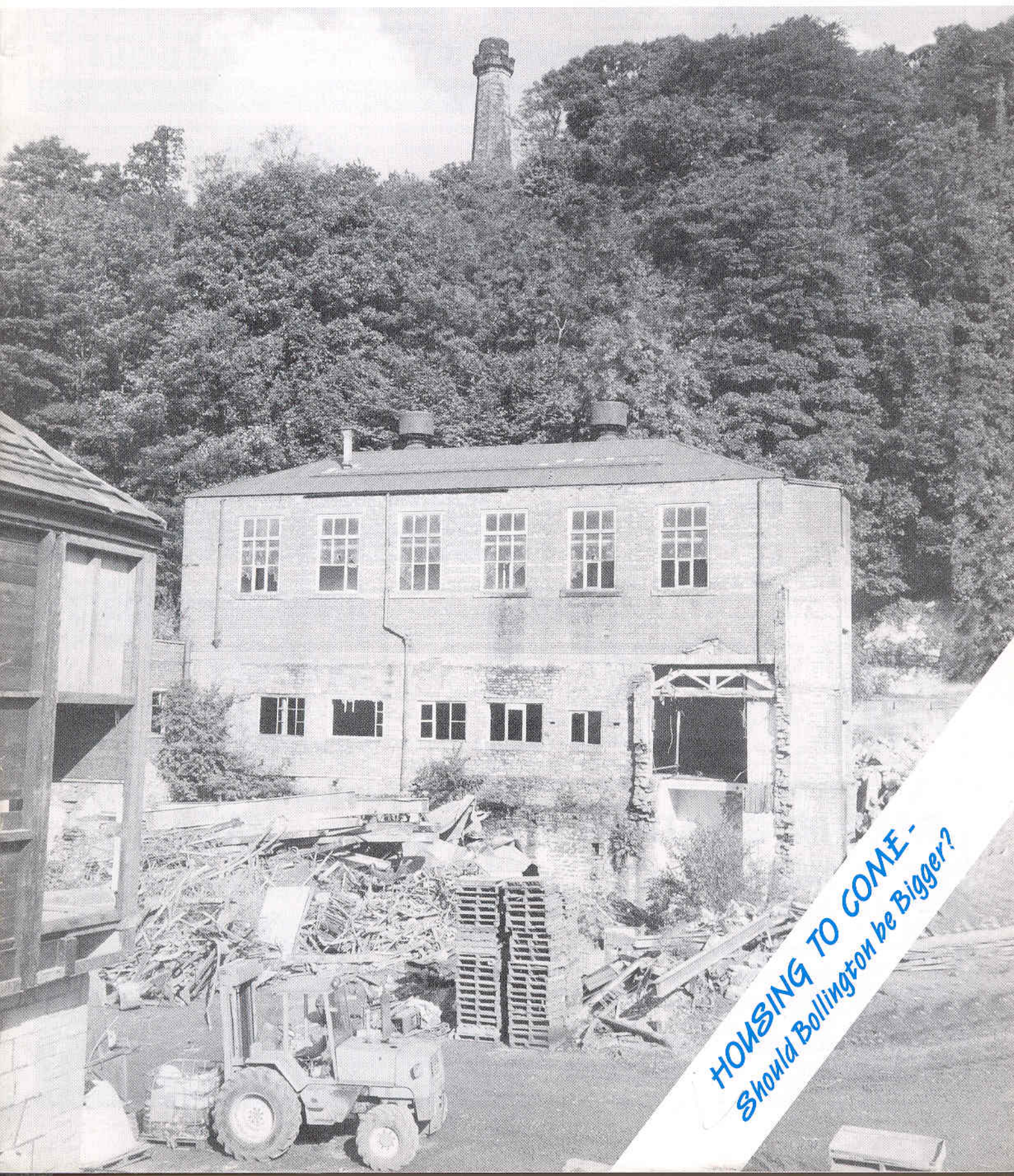


# BOLLINGTON

# Live!

Number Fourteen

November 1998



**HOUSING TO COME -**  
*Should Bollington be Bigger?*



## DUNN by DESIGN

### Does your home need a makeover?

I offer practical and artistic advice to help you achieve your own transformed environment.

Please contact: Philip J. Dunn BA(Hons) BArch

01625 560 625

*Affordable & Informal Interior Design Advice*



## PRESTBURY NURSERIES



Beautiful Houseplants, Fresh Flowers & Arrangements.

Winter flowering shrubs, baskets & tubs, and a huge choice of fruit trees, bushes & raspberry canes.

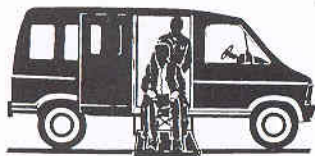
At Christmas we will have an excellent choice of Norway Spruce, Scots Pine & Noble Fir Christmas Trees, all of the highest quality and at reasonable prices.

PRESTBURY NURSERIES, London Road, Prestbury Tel. 01625 828748



## Bollington Radio Cars and Taxis

### ★ 8 SEATER MINI BUS ★



High back seats with diagonal seat belts  
Wheelchair facilities available 24 hrs  
Contract Work Welcome  
Distance No Object  
**Ring for quotes!!**



Your LOCAL Taxi

Tel. 01625 572540 / 572209

Buy British

## J. Kirk & Co.

Coal & Smokeless Fuel Merchants

Tel. 01625 573131

Showroom: 1 Palmerston Street, Bollington

Cookers \* Room Heaters \* Dog Grates \* Accessories

Buy British



Kath & Edwin Green  
invite you to come and enjoy

LUNCH or HIGH TEA

at the Country Café in Spuley Lane

12.30 - 2.00pm or 3.30 - 6.00pm Tues. to Sat

Tel. 01625 573357

## P.N. & M. CHADWICK



NEWSAGENTS &  
LOCAL LOTTERY AGENTS



Home delivery of  
Newspapers & Magazines  
Seven days a week

70 Palmerston Street

Tel: 572306

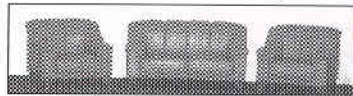
2A Crossfield Road

Tel: 573113

## Come to the Furniture and Fabric Emporium

CLARENCE MILL  
EMPORIUM

\* Objects collected from all over the world \* Designer Fabric from £4.99 per metre \* Wholesale prices direct to the public

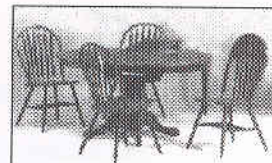


3 pc Leather Suites from £899

Opening times:

Mon-Sat: 10.00 - 5.00pm.

Sunday: 10.00 - 4.00pm.



Kitchen Table & 4 Chairs only £399

Café open for refreshments at all times

Furniture: 01625 576450 - Fabric Dept. 01625 576774

## HOBSON + SON TOY MAKER

HIGH QUALITY WOODEN TOYS FOR 3 YRS. ONWARDS

*Individually Handcrafted - toys made to order*

WORKSHOP & SHOWROOM OPEN FROM WED TO MON. 9.00 - 5.00pm

*Orders Now being taken for Christmas!*

Canal Side at Clarence Mill, Bollington. Tel. 01625 576605

## BOLLINGTON ANTIQUES

JEWELLERY - GLASS - CERAMICS - TEXTILES - FURNITURE  
and SCRAP GOLD BOUGHT & SOLD AT

CLARENCE MILL

Open Seven Days a Week from 10.00am - 4.45pm

Formerly House of St. Clair; est. 1976 at Romiley & Marple

Carol St. Clair Martin

Tel Shop: 01625 576867

Home: 0161-449 9978

## Palmerston Travel

Independent travel advice on a vast variety  
of travel arrangements

A wide choice of  
MAJOR TOUR OPERATORS  
and  
SPECIALIST COMPANIES

TAILOR-MADE arrangements

DISCOUNTED worldwide AIR TICKETS

BUSINESS TRAVEL



Fully ABTA-bonded

## Palmerston Travel

15 High Street, Bollington, Macclesfield, Cheshire SK10 5PH

Tel. 01625 574448 Fax. 01625 575926



*Bollington Live! is published 3 times a year on a non-profitmaking basis, with free distribution to households in the town. Under the editorial banner of "Bollington a town in its own right!" we aim to promote local concerns. Contributions are welcome to the Editor c/o Bollington Medical Centre, Wellington Road, Bollington.*

*Bollington Live! is published by Bollington Arts Centre & Bollington Civic Society, Wellington Road, Bollington, Cheshire SK10 5JL. Registered Charity No. 515096*

*Cover: Demolition in progress on the Oak Bank site, prior to the construction of 47 new homes.*

**Editor...** John Liley  
**Editorial Team:** Graham Barrow, John Coope, Penny Liley, Walter Menzies, Tim Neale, Richard Newstead, Joanna Sciortino, Andy Skelhorn, Andrea Storey, Fiona Swailes, Emily White  
**Advertising...** Dennis Caulfield (01625 572538) Mark Stedman (01625 575227)  
**Printed by...** Bollington Printshop (01625 574828)

## SHOULD BOLLINGTON BE BIGGER?

In the past thirty years Bollington has been transformed from an industrial "village", dependent on the production of high quality cotton, into a modern community with a wide range of employment and economic activity, of which many towns in the north-west would be proud.

In that time the population has climbed to around 7,000, with a smaller average number of people per household. The town of Bollington is larger today than at any time in its history - and the trend is continuing. Some 47 more houses are planned for the old Oak Bank Mill site near Pool Bank car park and every small plot of land is sought after for new housing development. Those little wild places in between the houses and the factories are getting fewer and farther between as Bollington becomes more and more suburbanised.

We are all understandably concerned about change and some see it as a threat to the community within which we live. But is the growth of Bollington and its change into a small town necessarily a bad thing? I'm not sure that the growth in the size of Bollington does not have its up side. The real threat is that Bollington becomes merely a residential suburb of Macclesfield, with few services or jobs - a place where people sleep, but with

their economic activity and leisure time spent elsewhere. Lots of houses but not much life!

How can Bollington in the 21st Century retain a balance of jobs, services, leisure facilities and a variety of housing that will ensure its survival as a balanced community? Growth may well be the answer, but growth in the right way. Is it possible that with a larger population Bollington would be better able to support shops (such as a new small supermarket?), our churches and the arts centre, retain its library, justify the reopening of a police station, keep the pubs going, argue the case for a secondary school, open a museum/heritage centre and support better street repair and cleaning - for example!

If Bollington's population were planned to expand to say 10,000 - that's about 25% bigger than it is today - possibly we would have a more "sustainable" town, to use the latest jargon, able to withstand some of the effects of being so close to Macclesfield and capable of supporting the services and facilities that we want to see. Obviously this level of development would require building on a green field site and this would undoubtedly be resisted by those living close to any proposed expansion.

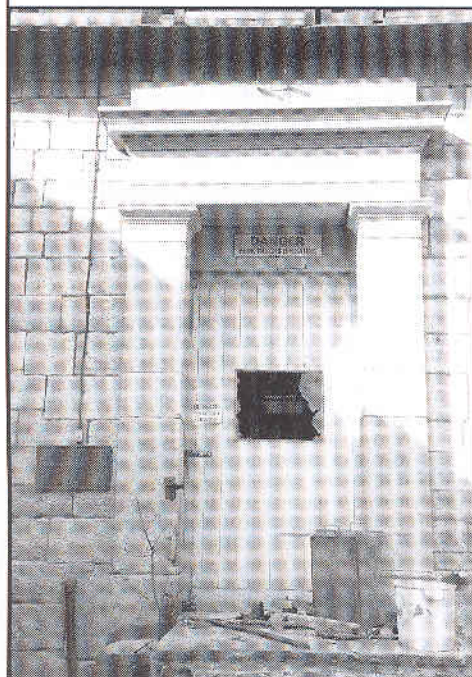
As Macclesfield continues to grow in size there is a stronger case than ever that Bollington should have a vision



*This sign beside Henshall Road, Bollington, caused concern when it first appeared. In fact, it refers to housing on the old gasworks site by nearby Princess Street.*

*But how long before such an important gap - of the kind referred to in the text - becomes built upon and filled.*

*And should it be built on? As the article indicates, expansion could bring benefits.*



*As one door closes.... On the brink of demolition, this fine entrance on the site of the Oak Bank Printworks was within days of disappearing when the picture was taken.*

for the 21st century. Where should we be allocating land for new industry and jobs? How do we ensure that new houses are of the size and design that will provide a balance of housing choice and allow some people to work from home? Where will the increasing number of older people requiring sheltered housing go? How can we reverse the trend in shopping closures?

Without our own vision of where we want to get to in the next 20 years, the more we will be seen as an appendage to Macclesfield, and Bollington will be developed primarily through the short-term aims of property developers. What happens when the next factory closes and the land is sold for housing development? Do we welcome it, or

*Continued Overleaf...*



Continued from previous page

should we take the opportunity of encouraging some retail or modern industrial development? Should we protect the Green Belt at all cost - or would a well-planned development on a green field site allow Bollington to expand and help to support local services? The town continues to be unable to develop a shopping focus capable of persuading residents to shop locally. Should Bollington have a retail development strategy?

The time has come for a Plan and vision for Bollington in the 21st Century. As a community we need to steer the inevitable changes that the next 20 years will bring. We should not merely be responding to outside forces as they arise.

Without any policies and ideas of our own, we are a slave to market forces, and developers cannot be steered towards the type of developments we need and want as a community. It's time to stop being complacent and set out a canvas for the future. What about a new vision for Bollington in the new Millennium?

G.B.

## According to government projections:

4.2 million new homes need to be built nationally in the twenty year period up to year 2016 - as far as possible on 'brownfield' sites. Were Bollington's contribution to be in proportion to its share of population the number of new homes to be erected here would need to be in the region of 600 (*Under present planning constraints, experts assure us, this number of houses is unlikely to be reached, but the figure provides an indication of the pressures we are under - Ed*)



### Population of Bollington:

1801	. 1,231
1831	. 2,685 (495 households)
1841	. 4,350
1851	. 4,665, approx.
1901	. 5,000, approx.
1951	. 5,000, approx.
1961	. 5,644 (2,007 households)
1971	. 6,602 (2,415 households)
1981	. 6,966
1991	. 6,855

*The Oak Bank site again. The earlier 5-storey mill here was destroyed by fire in 1882, but textile printing continued on the site. An interior view of this factory when working, appears on page 13.*

## High Street Store to Re-open

The shop in Bollington's High Street, previously operated as Costcutter, is shortly to reopen as the Bollington Village Stores. Alterations to the property were being advanced as we went to press, with plans for the shop to include a liquor licence and extended opening hours.

## SMALL ADS

£2 per line, min 3 lines.  
Tel Dennis Caulfield, 572538.  
Deadline: 1st October 1998

**HAVE A GANDER** - Open for business at 39 Palmerston Street: Bric-a-Brac, Antiques & Collectables; also House Clearances. 'Phone Terry at 01625 560725

**SUP & SAVE** - We invite you to sup and save at Bollington Cross Off-Licence. "Sup" our extensive range of beers and wines at our low "save" prices.

**BOLLINGTON CROSS PRE-SCHOOL GROUP**, Fridays 1.30 to 2.50 pm in the main hall at the school. 60p per family, includes drinks, biscuits, playdough, paints and weekly craft creation. Call Sandy, 575365, or Hilary, 576397.

**ASSISTANT HELPER** required for Heyday Playgroup, Water Street. Part-time, mornings. NVQ preferred. Please contact Lucinda Taylor, 574432.

**JAMES BARCOE - Antique Restoration** for Furniture Polishing, Caning & Rushing, Modern Finishing, and all Upholstery. Unit 6, Clarence Mill - Tel. 01625 574144 or 501932


**CHAMONIX VALLEY**. Private chalet run by highly-experienced 'chalet girl'. Superb cooking, 5 minutes from Grand Montets, with airport transfers from Geneva (1 hour), full accommodation. Minibus, guides, instruction and nanny care also available. Jan 3 to April 30. Tel 08 02 98 98 25.

**JUST BORN** Christening wear & Accessories, Gifts, Cards and Babywear. Everything at 1a Crossfield Road (off Ovenhouse lane) Tel. 573575

**LOWTHER STREET HALL** is available for hire. Parties, Jumble Sales, Meetings etc.. For details, please ring 575428



**Phil's Sweep**  
Clean, prompt, & reliable service:  
Open Fires, Brush & Vacuum also High Pressure Jet Wash for Drives, Paths & Patios - also Gutter Cleaning. All at competitive rates.  
Free Survey & Advice:  
01625 573529 or 0585 879153



**TATTERSALL'S BOOK SHOP**  
Helpful and friendly service  
Rapid book order facility  
5 Dukes Court, Mill Street Macclesfield, Cheshire SK11 6NN  
Telephone / Fax:  
01625-614741

**Michael Dale**  
Gas Installation & Servicing

- ★ Central Heating Boilers
- ★ Cookers & Water Heaters
- ★ Plumbing Kitchens & Bathrooms
- ★ Landlords' Gas Safety Certificates

**CORGI Registered Gas Installer**  
Registered No. 165270  
Telephone: 01625-574435





# The Yo-Yo Story

The craze for yo-yos has overtaken our family, as it has many others. Where has it come from, and what's it all about? To find out, I approached a real yo-yo expert, Bollington's own Jules Rowlands.

Jules is an entrepreneur. After leaving school at 16 and working long, exhausting hours for four years in the building trade, he received a tax rebate such as one dreams of. His shop 'Off the Edge' opened in Marlborough Court, Macclesfield, then moved to larger premises at the bottom of Mill Street. It is a shop of his hobbies - blades, skateboards, yo-yos, stunt kites and the gear to go with everything. Jules's enthusiasm about what he sells is from the heart, which is why you feel lifted when you have visited 'Off the Edge', despite having spent £12.99 on a Yomega Yo-yo (with a brain!). Ten weeks after doing this myself, I can say it was worth every penny, and the time, care and patience Jules and his colleague Jim spent helping William, my 9 year old, get off the ground with his yo-yo was even more appreciated.

So, what should we all know about yo-yos? Jules explained:

Yo-yos were first introduced by the ancient Chinese as a lethal weapon; but in this century their popularity has grown as a toy: an old lady told Jules how in the mills they used to make them out of cotton reels, with the cotton as string.

In the last few years they have reached craze status, entering Britain from the



Jules Rowlands demonstrates a yo-yo at his shop 'Off the Edge', seen also below. Stunt kites and skateboards also form part of the stock.

USA with the Inline Sk8ting scene. The world-wide phenomena of the yo-yo has taken Britain by storm, with sales of hundreds of thousands.

Now, however, the Yoyo can be far more sophisticated. Some light up, make noises or play tunes, and the best really do have a 'brain', an invention by the Americans a decade ago. This is the name given to the centrifugal clutch that grabs a ball-bearing in the yo-yo enabling it to 'sleep', or spin at the end of the string. A small jerk of the wrist then makes the yo-yo fly back upwards again. 'Sleeping' can last for up to 60 seconds, often producing a screeching sound made by the string.

Prices vary from £1 upwards, but a good quality yo-yo costs upwards of £10. The top 'professional' yo-yoers are considered to come from Hawaii - and they will pay £100 for theirs. At a more earthly level Yomega yo-yos are recognized as being the best, as I said, at £12.99. Instruction videos are available, and there are about 3,000 tricks to date, with names to suit every one including: Rock the Baby, Walk the Dog, Skin the Cat, Double Skin the Cat and Four Leaf Clover!

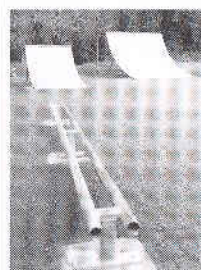
Tricknology Clubs have started up. Cards are available and stickers can be collected as tricks are mastered, with bronze, silver and gold awards to prove it. Here really is a toy that can unite whole families, unless of course the Dads sneak practices at work, to improve their street cred.



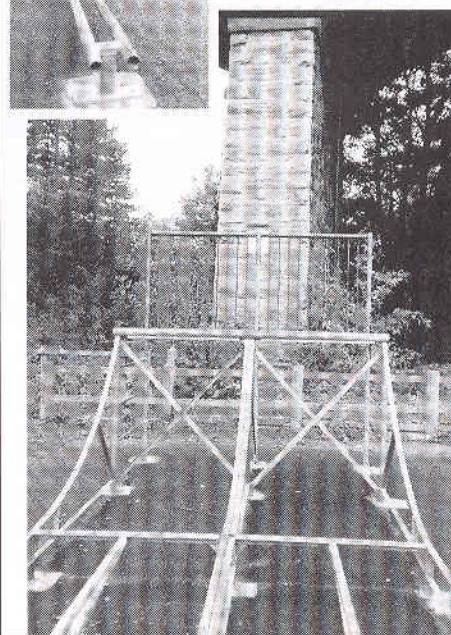
## NEW RAMPS FOR OLD

Jules was one of the original group that campaigned for the skate ramp at the Adlington Road site in Bollington. After pressure by more recent youngsters for additional facilities, new equipment has been added. Sincere thanks are due to the Borough Council for this; but how sad that the main skateboard ramp skin was removed **BEFORE** the summer holidays and was only replaced in mid-October. Such an absurd delay provokes a sense of frustration in our young Bollingtonians, their parents and others on their side

PL



New equipment, left, has been installed; but the main ramp long lacked a surface.





## No Youth Club?

*Martina Jackson puts the case for the Water Street premises*

As you read on you are either one of the irate residents wishing to banish the youth club in Water Street forever; or you may like me (a teacher with a teenage daughter, and two following quickly in her footsteps) feel strongly about the need for a safe place for children to meet. For sure, teenagers do need the opportunity to participate in group activities whilst avoiding becoming part of 'hanging groups' who trundle from park to Memorial Garden, then linger till dusk.

It has been known for some time that a number who attend the Club do not live in Bollington, but journey in from Poynton and Macclesfield. There is no membership system, so individuals come and go as they please - no wonder the Water Street residents raised a petition about syringes, litter and general vandalism hailing down on their flower-draped cottages.

I think, both as a mother and a teacher, that the Club, as it stands, should be closed down forthwith. It should then be re-opened with different structures to control our young people. Now, at



*Members and helpers wash cars in a fund-raising exercise behind the Youth Club premises in Water Street.*

the word 'control' some may cringe, but with activities carefully planned, there is no reason for poor behaviour inside or outside the building.

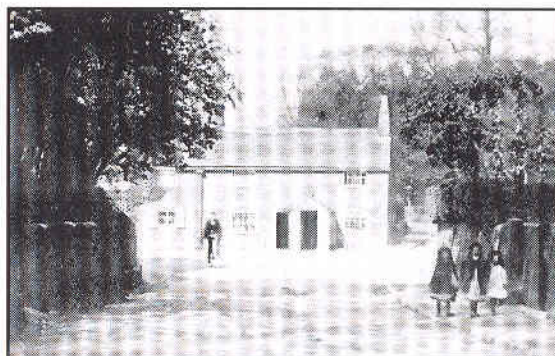
Amongst my suggestions is the introduction of a membership fee, of, say, £5 per annum - if they are paying to be part of a club, they will feel responsibility towards that place. Additionally, proof of age and identity should be produced. If teenagers do not wish to adhere to these reasonable

and safe proposals, well "You don't have to drift along to Water Street!"

Isn't it time we actually stopped wailing about the 'teenage problem' in the village and did something about it? I, for one, am certainly willing to lend my support and time to a revised system. The trouble-makers ARE in the minority. Now is the time that the majority had their say. After all, our young people have few safe and inexpensive places to go.

## (THE OLDE) COCK & PHEASANT - EXPLAINED

I've been intrigued for some time by the curious signs that sprung up outside the Cock & Pheasant when it was refurbished earlier this year: "A pub the way it used be" and the Cock has become 'THE OLDE...'. What could this mean? Had they discovered some ancient Tudor beams surrounding a medieval hearth? Had they put down sawdust on the floor and started serving pickled eggs and stale pork pies washed down with a rough pint of mild? Will the pub in due course become 'YE OLDE' and boast that Charles the First once spent a night there. Well of course not. It's another pub trying to find a



*The Cock & Pheasant when it was younger. The road here was widened in the 30s, the right hand end of the building demolished.*

theme to attract us away from our videos and takeaways. But what is it like? There was one way to find out.

I have to admit the name change and promises of a traditional pub atmosphere had put me off, but if good beer, pleasant decor, atmosphere and friendly staff are the way pubs 'used to be' then the new look Cock & Pheasant

fits the bill. The semi-open plan interior is a pleasant mixture of bare brick walls, bits and pieces hanging from the ceiling and wooden floor, tables and chairs. It also has an excellent collection of old photographs of Bollington. The attached glass annexe is ideal for family meals and (in a thoroughly modern way) they have a children's playground outside.

So after a couple pints of Boddingtons bitter, what did I think of it? Well, not surprisingly it's not at all the way pubs used to be, and in many ways it's the most modern of Bollington's public houses. This kind of theming of pubs is common and nothing new. It is unusual for Bollington's pubs however: most of our pubs are still the way they used to be - they've never changed. What is fascinating is that a fake old-fashioned interior is often more popular than the real thing. Make no mistake though, the Cock & Pheasant is still a proper pub and is probably none the worse for its facelift. But 'OLDE...!!!' **TN**



## HOLMES ~ NADEN

INDEPENDENT ESTATE AGENTS

A professional and personal service, from open market appraisal to completion of property sales

- ★ Open 7 days a week
- ★ Free open market appraisal
- ★ Independent Financial Advice available

Bollington Office: 78 Palmerston Street, Bollington SK10 5PW

Telephone: 01625 560535

Prestbury Office: The Village, Prestbury SK10 4DS

Telephone: 01625 828254

## studio 90

For  
Simply Beautiful  
Wedding Photography  
choose

studio 90  
of Bollington

Please call 01625 576453  
or 0378 435947



# BASELINE

GRAPHICS LTD

01625 574400

## THORNEYCROFT

& Co

S O L I C I T O R S

CONVEYANCING DIRECT  
Fixed Price  
Home Conveyancing  
NO SALE - NO FEE

**FREEPHONE: 0500-344220**

## Marie Ann

HAIRDRESSER

9, Grimshaw Lane, Bollington  
Tel. Bollington 572495

## Beasdales

RESTAURANT

THE BISTRO ON THE GREEN

Brilliant Worldwide Wines  
Superb Food at Sensible Prices

Telephone: 01625 575058 for reservations

22 Old Market Place High Street Bollington

*Yesterdays*  
CHINA, GLASS,  
FURNITURE, ANTIQUES  
BOUGHT AND SOLD

John and  
Olive Kershaw

Store Street and  
68 Palmerston Street,  
Bollington

Tel. 01625 573222

## EAST

CHESHIRE  
PROPERTIES



RESIDENTIAL  
MANAGED  
LETTINGS

68 Palmerston Street,  
Bollington,  
Macclesfield,  
Cheshire SK10 5PW

Tel. 01625 576287

Pauline Jones - Olive Kershaw

## WEST BOLLINGTON POST OFFICE

On Wellington Road - Your Local Car Tax Office

NEW OPENING HOURS

9.00am to 5.30pm Mon-Fri & 9.00am to 12.30pm Sat.

Greetings Cards & Stationery  
Christmas Cards, Calendars & Diaries  
Christmas Gifts, Books and Toys

- Dry Cleaning • Buxton Opera House Tickets •
- 'Sweet Choice' Desserts •

65 Wellington Road Bollington SK10 5HT  
Tel/Fax 01625 572378

## Slee,

Percey & Co.

Chartered Accountants

YOUR LOCAL ACCOUNTANTS  
PROVIDING A PERSONAL SERVICE  
TO LOCAL BUSINESSES

Brookbank House, Wellington Road, Bollington  
Telephone 01625 575535





# BOLLINGTON



## NOVEMBER

*Sunday, 1st - Wednesday 25th*

### PETER SEDDON

Ceramic Panels Exhibition at the Bollington Art Centre, can be viewed during events at the Art Centre

*Monday, 9th*

### W.I. AGM

Methodist Church, 7:30pm. Tel 573571

*Wednesday, 11th*

### FLOWER CLUB MEETING

Community Centre, Ovenhouse Lane, 7:30-9:00pm Tel 422835

*Monday, 16th*

### A PHOTOGRAPHIC RECORD OF BOLLINGTON

Illustrated talk to the Civic Society by well-known local historian Molly Spink. Arts Centre, 8pm, following the AGM.

*Thursday, 19th*

### HORTICULTURAL SOCIETY

Dog & Partridge, 8pm, Tel Blanche Royall 422835

*Friday, 20th*

### "RICHARD III"

"...a bracing revision of the Plantagenets" - *The Observer*  
Staged by the Rural Touring Theatre Network Oddbodies, this is an intriguing adaption of one Shakespeare's most famous plays, directed by John Mowat. A unique blend of live music, text and stunning imagery. At Bollington Arts Centre, 8pm Tickets £3.50 and £2.50. Tel 560000, office hours, 576250, evngs.

*Thursday, 26th*

### TODDLERS PRAISE & PLAY

Childrens nursery meeting at St Oswalds, 2pm

*Saturday, 28th*

### PARISH CHRISTMAS FAIR

St Johns Primary School, 11am

### PTA CHRISTMAS FAIR

Dean Valley Primary School, 12pm, Contact Mrs Thorpe

### MACCLESFIELD MALE VOICE CHOIR

Guest Soloist Lynne Bradbury, Methodist Church, 7:30pm, Tickets £5.00 Tel 875322

*Saturday, 28th*

### "ALL THE SUNDAYS OF MAY"

Performed by the Hijinx Theatre, a passionate and tragic story of survival and love in a time of repression and moral decay, accompanied by live gypsy music.

Directed by Firenza Guidi and supported by Macclesfield Borough Council. At Bollington Art Centre, 8pm. Tickets £6.00 & £5.00 Tel 540114

*Saturday 28th - Saturday 27th February*

### ARTISTS AT WORK - THE TOURING EXHIBITION

An opportunity to view the work of artists participating in the Cheshire Open Studio Event, supported by Northwest Arts, Cheshire County Council Cultural Services and Congleton Borough Council. At Bollington Art Centre. Can be viewed during events

*Sunday, 29th*

### "CINDERELLA'S SEASON"

Musical Pantomime written by Donald Judge for Bollington Children's Music Theatre. Witty lyrics and colourful characters; splendid family entertainment. 4.30 & 7:30pm. Tickets £3.50 (£2.00 concessions). Tel 0161 427 2870

## DECEMBER

*Wednesday, 2nd*

### CHRISTMAS DINNER

for Bollington Wives, at the Tunncliffe Restaurant. Time to be arranged. Tel 574208,

*Saturday, 5th*

### KIRANPAL SINGH (SANTOOR)

& Accompanists (flute, tabla & tamera), performing classical Indian Music Presented in association with The Asian Music Centre, Bollington Arts Centre, 8pm. £9 (concessions £3). Tel 560000, office hours, 560355, evenings.

### MYDEL LADIES CHOIR

in concert with The Bollington Brass Band at The Heritage Centre, Macclesfield. Starts between 7:30 & 8pm. Tel 574678

*Sunday, 6th*

### TOY SERVICE

at Methodist Church, 10:30am

*Wednesday, 9th*

### CHRISTMAS PARTY

Bollington Flower Club, at Eaton (Coach provided). Tickets £13.95. Tel 422835

*Thursday, 10th*

### CHRISTMAS PARTY

Horticultural Society, at the Tunncliffe Restaurant, Park Lane, Macclesfield. Tickets £13.50 Tel 422835

*Sunday, 13th*

### "LORDS OF RULE AND MISRULE"

Christmas entertainment conducted by John Coope and performed by The Bollington Festival Choir, with contributions from The Festival Players. At the Methodist church, 8pm. Tickets £6.00 (children and unwaged £4.00). Tel 573494

*Monday, 14th*

### CHRISTMAS PARTY

WI, Methodist Church 7:30pm. Tel 573571

*Tuesday, 15th*

### "MESSIAH FOR ALL"

Refreshments provided. Bring your own copy. For tickets Tel 573494. Bollington Arts Centre, 8pm

*Thursday, 17th*

### TODDLERS PRAISE & PLAY

Childrens nursery meeting at St Oswalds, 2:00pm

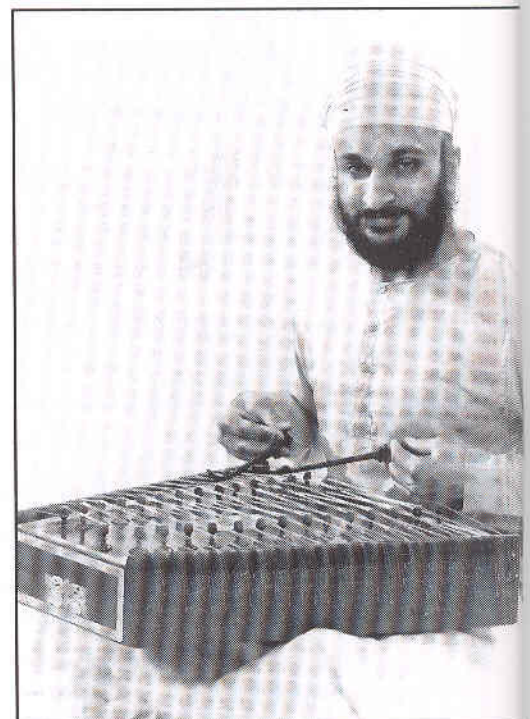
*Sunday, 20th*

### CAROL SERVICE

at Methodist Church, 10:30am. Tel 875322

### VILLAGE CAROL SERVICE

organised by all churches at St Johns Church, 6pm



*Kiranpal Singh with the Santoor, an instrument of some 100 strings, originating in Kashmir. His programme of classical Indian music is scheduled for the Arts Centre, Wellington Road on December 5.*



# EVENTS

## CHRISTMAS CONCERT

performed by The Bollington Brass Band,  
Civic Hall, 8pm Price TBA. Tel 574678

Thursday, 24th

## CAROLS AROUND THE CHRISTMAS TREE

with Bollington Brass Band outside the  
Council Offices, Wellington Road, 6pm

## JANUARY

Wednesday, 6th

### A MEDITERRANEAN EVENING

Cookery by Asfan Burrows. Bollington  
Wives, 8 pm, Civic Hall. Tel 574208

Friday 8th - Saturday 16th

### "SNOW WHITE & FRIENDS"

Pantomime staged by The Bollington  
Festival Players at the Bollington Arts  
Centre. Matinee 8th, 9th & 16th 2:30pm  
Evenings 8th - 16th 7:30pm. Tickets £4.50  
(£2.50 concession) Family ticket £12.00.

Monday, 11th

### "A NIP AROUND SCOTLAND"

An illustrated talk by Mr Woodhouse:  
WI Meeting, Methodist Church. 7:30pm  
Tel 573571

Wednesday 13th

### FLOWER CLUB MEETING

at Community Centre, Ovenhouse Lane.  
7:30 - 9pm. Tel 422835

Saturday 16th

### "CINDERELLA"

Pantomime at Liverpool starring Stan  
Boardman, arranged by the Horticultural  
Society. Coach provided. Tickets £16.00.  
Tel 422835

Thursday 21st

### HORTICULTURAL SOCIETY MEETING

Dog & Partridge, 8pm. Tel 422835

Saturday 23rd

### ALMIRA STRING QUARTET

performing the works of Hayden, Bartok  
and Debussy. Bollington Arts Centre, 8pm  
Tickets £9 (concessions £3). Tel 560000,  
office hours, 560355, evenings.

Thursday 28th

### TODDLERS PRAISE AND PLAY

Children's nursery at St Oswalds, 2pm

## FEBRUARY

Wednesday, 3rd

### CHESHIRE CANALS

by Tim Boddington. Bollington Wives,  
Civic Hall, 8 pm. Tel 574208.

Wednesday, 10th

### FLOWER CLUB MEETING

Community Centre, 7:30 - 9pm Tel 422835

Saturday, 13th

### THE KENWOOD ENSEMBLE

Clarinet, piano and soprano, with a  
collection of work including Mozart,  
Benjamin and Schubert. Bollington Arts  
Centre, 8pm. Tickets Tel 560000, office  
hours, 560355, evenings.

Sunday, 14th

### HEDGELAYING 2

A further chance to try the traditional art,  
with Ranger Paul Hughes. Tools and tuition  
provided - but bring your own lunch. 10.30  
am - 3.30. Meet Adlington Road Car park.

Monday, 15th

### "JOHN LEWIS - CHEADLE"

WI meeting, with talk by Mr C. E Brown.  
Methodist Church, 7:30pm. Tel 573571

Thursday, 18th

### HORTICULTURAL SOCIETY MEETING

Dog & Partridge, 8pm. Tel 422835

Sunday, 28th

### RAINOW RAMBLE

A six-mile upland walk, led by Ranger  
Andrew Watson, starting from Adlington  
Road Car Park, 1 pm.

### GRAND AUCTION\*\*\*

at Shrigley Hall in aid of Pott Shrigley  
School extension. Time to be confirmed.

## MARCH

Wednesday, 3rd

### POSTCARDS FROM THE PAST

with Mrs Brenda Shone and friend.  
Bollington Wives, Civic Hall, 8 pm. Tel  
574208

\*\*\*Donations, including items for auction,  
are warmly welcomed by the Pott Shrigley  
School PTA, in order to raise funds for the  
much-needed extension. Please contact  
Vanessa Simmonds, 575541, or Clare  
Chasty on 572878.

## BOLLINGTON BLOOMS



The 1998  
Bollington-in-  
Bloom awards  
yielded the best

result ever for our town as a whole  
- First Prize in the North-West in  
Bloom Competition.

The rosebowl awarded for  
Bollington's premier place in the  
Small Towns section in this event  
now resides in the Town Hall.

Local awards this year were as  
follows: Terraced houses, Joint First  
to Simon McDougal of 58 High Street  
and Ernest Taylor, 58a High Street,  
together with Kevin and Janet Clarke  
of 33 High Street. In the House and  
Gardens Section, jointly in First  
position were Philip and Brenda King,  
82 Bollington Road and Margaret  
and Ronald Jackson of 18  
Cocksheadhey Road. Winners in the  
Council Estate Section were Derrick  
and Brenda Whyatt, of 34 Swanscoe  
Avenue; in the Commercial Section,  
the Church House Inn; and, for  
Community Effort, Ingersley Court  
House. The judges wish to commend  
the entire community for the big effort  
that was made, and for the successful  
outcome achieved - First Prize, for  
the first year ever!

## THE FESTIVAL TO COME

Plans are developing for the next  
Bollington Festival, marking the  
Millennium in May, 2000. On the  
theme of 'White Nancy and her  
Children', Dr John Coope welcomes  
ideas and contributions from local  
organisations and individuals, who  
are invited to contact him directly.  
Ideas so far submitted include a visit  
from a South Carolina Choir and a  
river race down the Dean. Dr Coope  
can be reached on 573494, or at the  
Bollington Medical Centre,  
Wellington Road.



## Corner House Antiques



59/61 High Street, Bollington, Cheshire SK10 5PH  
Tel/Fax: 01625 576362

# ANTIQUES WANTED!

*Antique Furniture, Architectural Items  
& Decorative Furnishings Available*

### ALSO:

Several ranges of

## NEW & RECLAIMED PINE FURNITURE

*Come In and Check our prices!*

*Knobs, Handles & Fittings available to order*

**Tel. 01625 576362**

## J.A.McNULTY

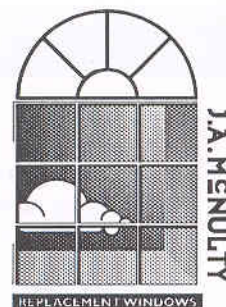
UPVC & JOINERY MANUFACTURERS

Soft & Hardwood Windows, Doors  
Conservatories, Porches etc.  
Phone or call in for free quote  
- no obligation

**OPEN FROM  
MONDAY TO FRIDAY**

Ingersley Vale, Bollington SK10 5BP

Tel. 01625 574508; Fax: 01625-576248



**j e c menzies** b.arch 01625 572197  
**architectural design  
garden design**

sympathetic extensions  
inspired replanning



**BOLLINGTON  
DENTAL  
LABORATORY**

51 High Street, Bollington  
Macclesfield SK10 5PH  
Tel. 01625 574750

*Perfectly Fitting Duplicate Dentures using  
revolutionary Injection Moulding technique  
• Direct to the Public • Denture Repairs •*

**ROGER L. BLOOR** *Specialist Joiner*  
Property Repairs; Fitted Bedrooms & Kitchens

**Free Survey & Quote: 01625 572055**

Clarence House, 3 Round Gardens, Bollington



A first class personalised balloon decorating service for all occasions  
Coming of Age to Anniversaries.....Burns' Night to Barmitzvahs.....Christenings to Christmas  
Arches, bouquets, characters and many more designs in a wide choice of colours  
For free advice on how to make your party special call Vicky Greenhalgh on 01625 573562

## E. OSBORN ELECTRICAL

(Ampway North West Ltd.)

45a Jackson Lane, Kerridge,  
Bollington, Macclesfield, SK10 5BE

**Tel. 01625 572814 or  
0836 557709**

Industrial, Commercial and Domestic  
Electrical Contractors

**ECA Approved Contractor**

## Bollington Insurance

For Insurance Advice  
which is

**INDEPENDENT  
EXPERT  
and LOCAL**

Immediate complete quotes  
for home and car insurance

Many specialist schemes  
for businesses of all types

51, Palmerston Street, Bollington  
Telephone: 01625 574342 Fax: 01625 560076



# Retirement in Bollington - a Guide to Facilities

Listed below are organisations available to those in retirement in our town. Compiled by *Emily White*, this record includes, where it is constructive, addresses outside Bollington, while some of the facilities in the Social section will naturally interest a wider age range. The broad plan, though, has been to concentrate here on information of value to the middle-aged and elderly. Thanks are due to the Town Clerk's office in Bollington for assistance given with a number of the entries.

## Social Groups and Courses

**Activities in Retirement** organises rambling, bowls, theatre and day outings, painting, music, holidays. Contact: Harold Gumm. 573448.

**Adult Education Courses**, including several at Bollington Arts Centre and the Civic Hall, are co-ordinated from Macclesfield Adult Centre, Ryles Park Road. Tel 431739

**Art Group** gatherings are at the Civic Hall, Mondays, 7.45 pm and Lowther St School, Weds, 1.30. Newcomers are always welcome, while professional tuition can be provided. Secretary Janet Leishman, 572410.

**The Bowling Club** meets at the Turners Arms, Ingersley Rd. Represented in two leagues, the club always welcomes new members. Secretary: A J Heathcote, 572102.

**Bridge Club** members meet at the Arts Centre, Wellington Rd, Thursdays, 2.30 to 4.30, Friday from 7.30 pm. Contact Mrs Padfield, 574377.

**The Civic Hall**, Palmerston St (above the Library, Manager Jim Woolley, 572946), is the venue for:

**Line Dancing**, Mondays, 9.30am to 11 am

**Modern & Sequence Dance**, Tuesdays, 1.30 to 3.30 pm

**Senior Citizens Tea Dance**, Wednesdays, 2 to 4 pm

**Tea Dance**, with live band on first Thursday of the month, 1.30 to 4; also on Thursdays from 8 to 10 pm.

**Over-50s Keep-Fit Classes**, Thursdays 10 am to 12

**Flower Arranging**, Wednesdays 10 am to 12

**Social Bowling** on 2nd, 3rd & 4th Thursdays, 1.30 to 4 pm

**The Drop-in Centre**, Wellington Road, is a good place for a chat, or visitors can engage in handicrafts. Activities, with facilities for the disabled, include woodwork, drama, fabric painting, pottery, photography. Help is also organised for local shopping. Open Monday to Thursday, 9.30 to 3 pm. Contact Ann Mayer, 576311.

**The Flower Club** meets at Ovenhouse Community Centre on the 2nd Wednesday each month, 7.30 to 9.30 pm, and all visitors are welcome. The Secretary is Mrs Royall, 4222835

**Bollington & District Horticultural Society** meets at the Dog & Partridge, Wellington Road, on the 3rd Thursday of the month at 8 pm. Tel 422371.

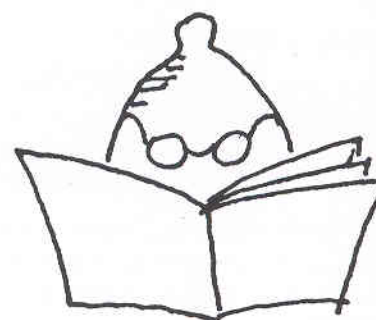
**Bollington Leisure Centre** has extensive gym and swimming facilities, with sauna, jacuzzi, sun-bed, beautician and therapy services. Classes are held on later life fitness, swimming, aerobics, yoga, Tai chi, Chi kung. At Heath Road, Bollington Cross. Tel 574774.

**The Library**, Palmerston St, in addition to normal services offers talking books, minicom, Typetalk, large print reading, sub-titled videos. For those on low income, or suffering ill-health or disability, a 50% reduction is possible on facilities for which a charge is made. Tel 573058.

### Opening hours:

Tuesday, . 9.30 to 1 and 2 to 7 pm  
Thursday, 9.30 to 1 and 2 to 5 pm  
Friday, ..... 2 to 7 pm  
Saturday, 9.30 to 1. ....

**Probus**, for retired professional and business men, meets at the Civic Hall at 10.30 am on the 2nd Tuesday of the month. Outings are also arranged. Contact K Meecham on 575921.



**Ramblers Association** walks are organised by Georgie Everson on alternate Tuesdays and Wednesdays, customarily with three walks of different lengths. Tel 572445.

**The Wives Group** meets at the Civic Hall, Palmerston Street on the 1st Wednesday each month, with speakers, demonstrations and visits. Contact Mrs Gosling, 574208.

**The Women's Institute** meets at the Methodist Church, Wellington Road, 2nd Tuesday of the month at 7.30 pm. The Secretary is Mrs Dawson, 575834.

## Churches:

**Church of England** - St John's Church St; St Oswald's, Bollington Cross; Holy Trinity, Kerridge. Revd Michael Whetter, 573162;

**Hawthorn Road Christian Fellowship**. Leader Stephen Thomas. 575296;

**Methodist Church**, Wellington Road. Revd Ruth Jackson, 572259;

**St Gregory's Roman Catholic Church**, Wellington Road. Revd Austin Malloy, 572108. Revd Robert Coupe.

**United Reformed Church** worship at Shrigley Court, Church St. Revd Tony Williamson, 422659.

**Ex-service associations** are represented by **The British Legion**, holding meetings at the Town Hall, on the 3rd Monday of the month, at 8 pm; **The Burma Star Association** (Secretary J J Ingley, 574736); and **Kerridge War Memorial Committee**, which meets at the Bull's Head three times a year, with the annual service in Oak Lane on the 2nd Sunday of July at 3 pm (Secretary W Oldfield, 572671).

*Continued Overleaf...*



## Senior Citizen's Clubs:

**The Darby & Joan Club** stages whist and card games at Shrigley Court, Church St, each Tuesday from 1.45 to 3.30 pm. Contact Mrs Bysh 572665.

**The Evergreen Club** meets at the Community Centre, Ovenhouse Lane on Thursdays from 2 pm (Mrs Bysh, 572665)

**Senior Citizens Social Club** members meet at the Community Centre, on Tuesdays and for dancing on Wednesdays, 7 pm to 9. Contact Mrs Platt, 573257.

**Senior Citizens Luncheon Club** gatherings are also at the Community Centre, but on Mondays and Wednesdays at 12 noon. Also at Shrigley Court on Wednesdays and Fridays. (Mrs Platt, 573257)

**The Ageing Well Health Group** for chairbolic exercises is led by an Ageing Well volunteer, followed by a social gathering, at Shrigley Court, on Thursdays, 2.30 to 3.30 pm. Contact Age Concern on 612958 and 618106.

**The Senior Citizens Welfare Committee**, chaired by the Mayor, organises annual entertainments, visits for special birthdays and golden weddings. Hon. Sec: Mrs B Bonson, 64 Shrigley Road. Tel. 573187\*

*\*Councillor Betty Bonson asks us to urge any senior citizens of Bollington who have not been invited in the past, and would like to attend the Mayor's Senior Citizen's Annual Parties, to contact her directly.*

## Support and Caring Organisations:

**The Access Action Group** campaigns for equal access everywhere in Bollington for those with any kind of disability, and holds monthly meetings. Tel: 572180.

**Age Concern**, of 122 Chestergate, Macclesfield is open weekdays 9 am to 5 pm, offering information, advice, with 43 fact sheets, and home visits. Tel 612958/618106. For local and national information for the over-50s, also day care for physically and mentally frail older people contact Dominic Anderson. For footcare, ask for Moira Hutchins, and, for the homehelp domestic cleaning service, Eileen Kilcoyne. Age Concern also offers insurance at preferential rates for buildings, cars, pets, and travel.

**Bollington Town Hall**, Wellington Road, provides general information. Open Mondays to Thursday, 9 am to 3 pm, Friday 9 to 2.30. Town Clerk: C Harlington, 572985.

**Cheshire County Council Social Services** can be contacted on 534700 (Out-of-hours Emergencies 01606 - 76611). The organisation also provides day care locally at the Community Centre, Ovenhouse Lane, Bollington, Monday to Wednesday, and also Friday, from 9.30 to 3.30 (Supervisor: Val Kirby, 534896).

For **Meals on Wheels**, contact Mrs Jane Hall, 572499

**Bollington Medical Centre** is at The Waterhouse, 51 Wellington Rd. 572481. For emergencies dial 575070; for out-of-hours information 572481

## Other useful addresses:

**Age Concern Cheshire Advocacy Scheme**, 81 Park Lane, Macclesfield SK11 6TF. Tel 619131.

**Alzheimer's Disease Society**, East Cheshire, 27 Wykeham Close, Macclesfield SK11 8QU: 503302.

**Carer's Information Line**: 0800 665544

**Carer's National Association**: 0345 573369

**Citizen's Advice Bureau**, Sunderland House, Sunderland St, Macclesfield 426303.

**Community Health Council**, 19 Castle St, Macclesfield. 420267.

**Council for Voluntary Service**, 81 Park Lane, Macclesfield. Tel 619101.

**Crossroads Care Attendant Scheme** (support for carers of disabled people at home), 81 Park Lane, Macc. Tel 511044.

**Deaf Society (Cheshire)**, 144 London Road, Northwich. 01606 47831

**Dial-a-ride**, Macclesfield: 613520

**DSS Benefits Agency** (formerly DHSS), Craven House, Churchill Way, Macclesfield 603000.

**Disability Information Bureau**, Pierce St, Macclesfield. 501759.

**Macclesfield Society for the Blind/Talking Newspaper**, 15 Queen Victoria St, Macclesfield. Tel. 422602.



## THE BOLLS A GRIPPING SAGA OF BOLLINGTON FOLK

## Holiday Snaps



GRANNY BOLL'S COCKTAIL SLAMMER

CAROL AND CHARLIE AT THE PLAGE

GEOFF BOLL 'ENJOYING THE VIEW'

... DREAMING OF WHITE NANCY!



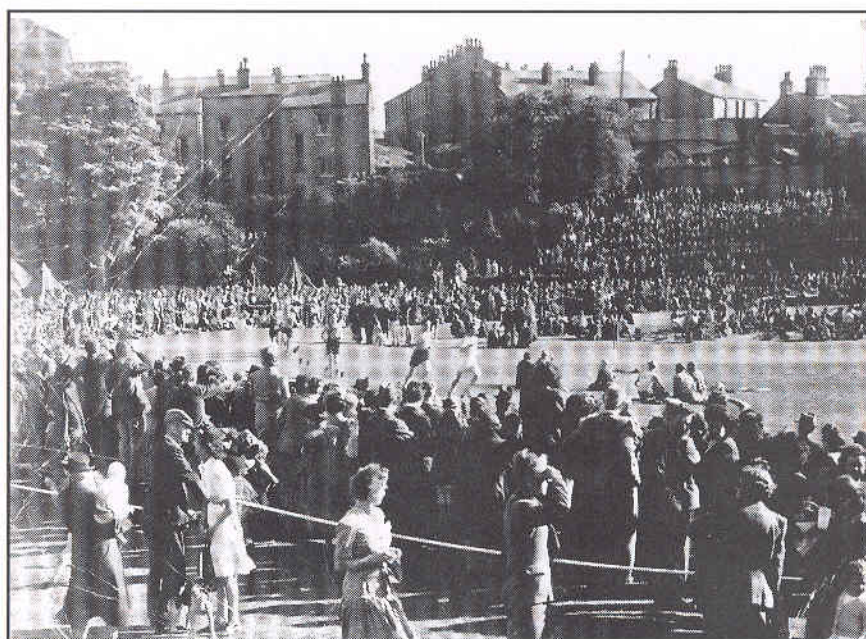
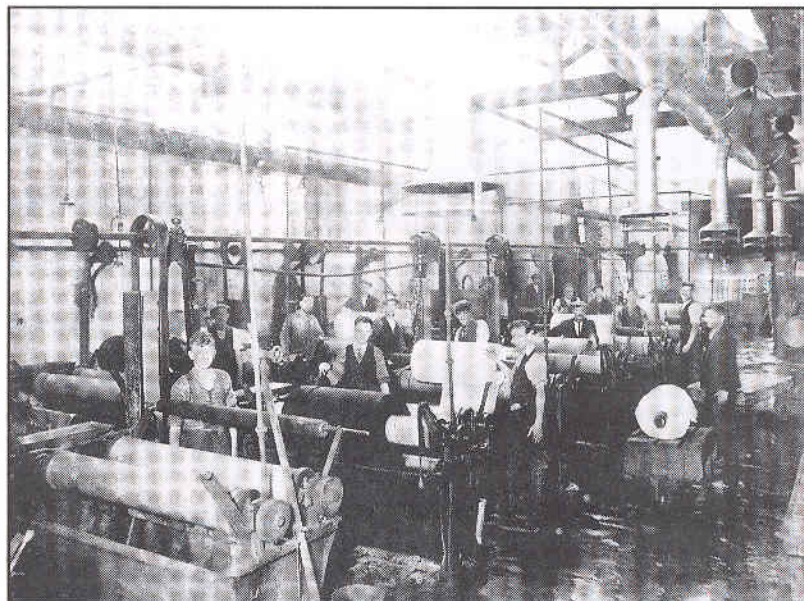


## The Bollington Archive

Work is progressing on the indexing of the many historical pictures of Bollington, now held at the Arts Centre.

Gathered together by the Historical Section of the Civic Society, with an enormous input by its members, the many photographs already on file are being indexed by *Bollington Live!* committee member Fiona Swailes.

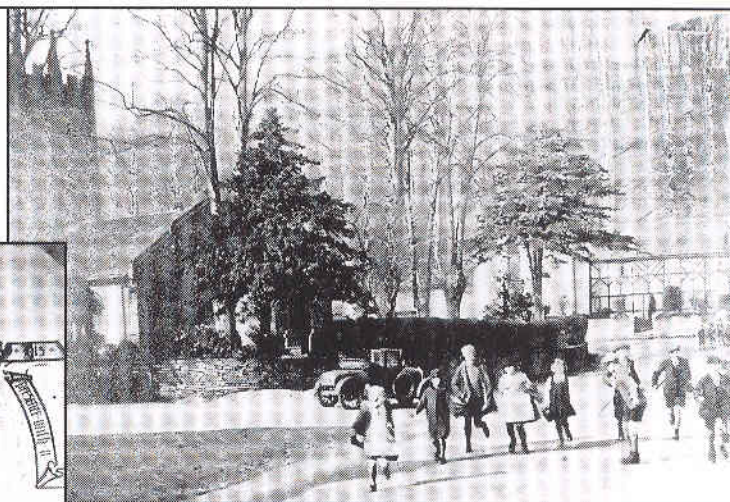
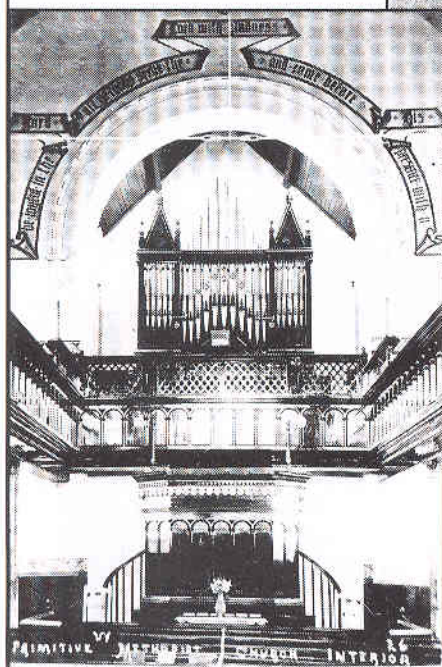
Further pictures are always welcome and anyone with local photos is invited to lend them for copying. In this respect, further help is sought: volunteers able to help with copying would be most welcome. In the meantime, reprinting of selected pictures for purchase can be arranged with Fiona. Tel. 575956. Reproduced here is a sample selection from the collection.



*Photos contributed to the collection by local people range over many years. Shown here, clockwise from the top of the page, are: pram-racing in Shrigley Road during the Coronation celebrations in 1953; a scene from Mount Farm, Bollington Cross, during World War II; Oak Bank Printworks, c. 1930; the Mile Race during Bollington Sports on the Recreation Ground, 1948, with 6,000 spectators attending; Princess Margaret at the opening of the new St. John's School, Grimshaw Lane, in 1968.*



Continued from previous page ...



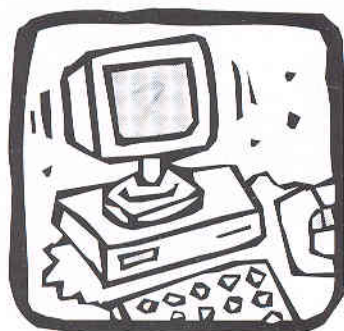
More from the archive: the interior of the Primitive Methodist Church in High Street, now demolished; school comes out at mid-day, 27 February, 1928, in Pott Shrigley; and people gather for a Sunday School Anniversary Walk from the Dog & Partridge Hotel, c. 1910.



## Bollington in Cyberspace

It's official: Bollington is out there! It could be a far-fetched plot from a particularly bizarre episode of the X-files. But it's true: Bollington has a strange and mysterious twin that exists only in another realm. This shadow Bollington haunts our reality from the depths of cyberspace and, until now, only the anoraks and nerds of the computer world have even been aware of its existence.

Nowadays (even if you know nothing whatsoever about computers and the internet), all you have to do is connect up your computer and plug in the modem. Everything else is explained as you go along. With a click of the



mouse, you are On-line, and free to explore a whole new world of wierd and exciting information. This is the World Wide Web, the place where more words, pictures, adverts, videos and sounds than anyone could ever imagine are all mixed up and connected together in a way which nobody can even catalogue, let alone fully understand. But even if you can't swim, you can surf. You just paddle out there, stand up on that board and stare, wide-eyed, as that massive wall of information comes crashing in around you.

On my first outing I simply typed out the word: 'Bollington' and back came the reply that I had found 119 Web Pages, all relating to Bollington. The subject matter was varied and included articles about Bollington Weather, Pubs, Unhealthy Food, Radiation Protection, Ceramic Artists, Fish, Bob Rigby's Pinhole Picture Gallery, and (surprising this one) more Pubs.

Then things started to get strange. Very strange indeed. Bollington United Football Club has a major website all to itself. This site boasted a major scoop under the title 'Bollington Boys in Rome Riot', before going on to profile all the top

players, complete with photographs. It was very impressive, and it was all I could do to prevent myself from going tribal. Manchester United eat your heart out.

But pride of place must go to the Knowhere Guide to Bollington. This site declares itself to be a member of the 'State 51 Conspiracy' and tells you everything you do and don't need to know about Bollington. The more people who visit the site, the more the things that get added to it. Here we find that Manchester United hang out in our restaurants, and tourists drink our beer, but things are not all bad. Bollington is officially 'Groovy', Billy Boswell in Bread used to live on Crossfield Road, and there are references to strange acts with bananas in the Conservative Club. There is even a confession from a former member of the Wilmslow and Knutsford Popular Front concerning the role of the WKPFO in the first of White Nancy's decorative re-paints.

It's all out there. But just remember, it's very addictive.

I don't have to surf the internet. I could give up anytime, Honest.

AS





## K & S BUILDERS for all building services

Home extensions and general property repairs

**FREE QUOTATIONS: 572861**



## You take the break. We'll provide the care.

At BUPA Care Homes we provide a refreshing alternative for those seeking comfort and care in attractive and comfortable surroundings, whether it's for a short or long stay.

Visit us and you will find friendly and enthusiastic staff, who have been trained to the highest standards. You will see that our residents are well cared for, in an environment that meets everyone's needs. If you would like to find out more about the care we provide at our homes, or would like to arrange a visit, please contact the Matron/Manager at the home you are interested in:

### Hazelmere House Nursing Home

Pinewood Road, Summerfields, Wilmslow, Cheshire SK9 2RS

Tel: 01625 536400

### Mount Hall Nursing Home

Flash Lane, Bollington, Macclesfield, Cheshire SK10 5AQ

Tel: 01625 574177

**BUPA Care Homes**

*For care as individual as you are*

## Flowers 'n' Things

*Quality Flowers & Gifts for All Occasions*

**FREE LOCAL DELIVERY - FLOWERGRAM AGENT**

**National & International Delivery Service**

2-4 Grimshaw Lane, Bollington, Cheshire Tel. 01625 572228

## STYLER'S

*GENT'S HAIR DESIGN*

**ALL STYLES CATERED FOR - IMPROVED SERVICE**

*Open Monday, Tuesday & Thursday from 9-6; Friday 9-7; Saturday 9-1*

**John Hargreaves** 123 Wellington Road, Bollington - Tel: 560819



## Derek Murphy

**DOMESTIC APPLIANCE ENGINEER**

**HOTPOINT HOOVER CREDA**

**For Prompt Service, Please Ring:  
Bollington: (01625) 575937**

## PROFIT FROM OUR EXPERIENCE

Self-assessment advice -  
Accountancy & Tax services for  
Self Employed, Partnerships and  
Small Companies.

For FREE initial consultation  
call Chris Jackson or Ann Sharpe

**01625 576636**

**JACKSON  
SHARPE**

CHARTERED ACCOUNTANTS



The Old Stables, Queen St., Bollington, Cheshire SK10 5PS

Why travel into Macclesfield for your  
Business and Personal Stationery?  
We can provide all your requirements  
in the quantities that you need  
at prices you can afford.

## Christmas is coming!

We have a huge range of Christmas Cards and  
Calendars, so there is sure to be something  
to suit everyone. Plenty of charity cards too!

**OVER 250 DESIGNS TO CHOOSE FROM!**

*Don't leave it too late to order!*

Why not choose some personalised stationery as a present this year?  
Ask for details - No minimum order!

For all your:- Design & Printing, Photocopying  
Stationery Sales - Business & Personal  
Office and Secretarial Services  
Computers and Supplies  
Word Processing & D.T.P.  
Worldwide Fax Service

**WE'RE HERE TO HELP!**

**Tel. 01625 574828 Fax. 01625 574025**

**EMERGENCY SERVICE**  
Panic printing for rush jobs  
Ask for details

michael  
**HART**  
& COMPANY

**CHARTERED SURVEYORS  
LAND & ESTATE AGENTS  
AUCTIONEERS & VALUERS**

2 Henshall Road Bollington Cheshire SK10 5HX  
Telephone 575578

**FREE pre-sale valuations & advice**  
**Full property letting & management service**  
**All types of surveys and valuations undertaken**  
**Independent mortgage advice**

Local Agents for

**HALIFAX**

Also at:- 36 Park Lane Poynton Cheshire SK12 1RE Telephone 876331





# BOLLINGTON



## The Guide to the Nab

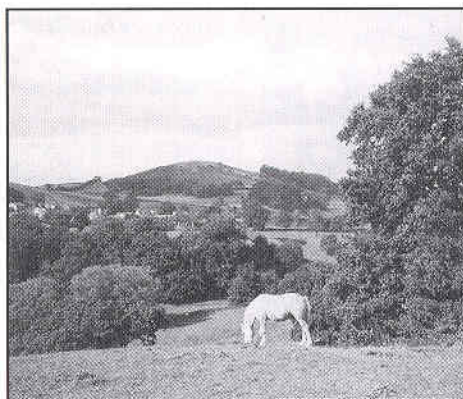
Since the footpath to Nab Head was restored, many people have again been enjoying the exhilarating walk and fine views. To mark the 25th Anniversary of the Rambler's Association's East Cheshire Group, the leaflet I produced this year included full panoramic pictures. This was thought better than a disfiguring permanent viewfinder, likely to be vandalised, and in its production I was fortunate to enlist the aid of Stuart Anderson, Manager of the Qualitech Group at Hazel Grove. He offered to produce the guide - in fine colour - and enabled the modest price of 25p to be charged. Profits, after expenses have been met, will be put to the improvement of footpaths in our area.

In the meantime, can readers remember whether there was a pillar on top of Nab Head in the 1930s? This would have preceded the present triangulation pillar, which was erected in 1940. 1930s maps also show a golf course. Can anyone remember this, or was it just a planning proposal that never came off? If you have any information, please ring me on 01625 - 877443

At a party to launch the guide on July 1, I arranged a small exhibition at Bollington Town Hall, showing the ancient barrow, burial place of a local chieftain, on the site, of c. 2,000 BC, and the use by field study and walking groups from the 1860s, with pictures of family parties on the summit during the period of frequent use between 1958 and 1978, before the paths were closed. Parts of the report of the Inspector at the Public Enquiry in February, 1996 were also displayed, together with the modification order made by Cheshire County Council to bring the paths onto the definitive map.

The guides are now on sale at Bollington newsagents, the library and many other points, and by 10 August over 600 copies had been sold.

Bill Shercliff



*Nab Head, seen on the skyline from Ingersley Road, Bollington.*

*Various routes may be followed to the starting point of the paths to Nab Head, but the simplest is possibly up Nab Lane, the last left hand turn from Shrigley Road for travellers heading out of Bollington towards Pott Shrigley. At the top of Nab Lane, a wide iron gate on the right, attached to a trailer, gives access to the drive between restored farm buildings and, eventually, by a very high stile, to the signposted path. An alternative route, also approved at the Public Enquiry, is indicated at the top of Nab Lane. This leads through a private garden - an unfortunate if legally supported intrusion - and also features stiles, before rejoining the main path in the meadow beyond. - Ed.*

## Back Numbers & Subscriptions

Copies are still available of most back numbers of this magazine, and are for sale at £1.30 each. This price covers postage, and has been arrived at as the cost of five first class stamps. Such a system enables small sums to be sent through the post

Please send five stamps for each copy, specifying the issue(s) required, with the address to be mailed to, to Bollington Live! c/o Bollington Medical Centre, The Waterhouse, Wellington Road, Bollington SK10 5JL.

Subscriptions for present and future copies are also possible at the same rate, ie £1.30 per copy, £3.90 for a year. Again, please send stamps.



**Could you boost the Civic Society?** Do you feel stirred, or provoked, by local issues? The Civic Society would like to hear from you. It's approach is to stimulate, the subscription modest. For details, please send this coupon, or contact directly, George Penney, Chairman, at Riverbank House, Garden Street, Bollington SK10 5JQ Tel. 574583

(Name) .....

(Address) .....

.....

.....

## Corporate Sponsors of Bollington Live!

*Bollington Live!* gratefully acknowledges the support given by local sponsors, who have enabled publication to continue into our fifth year:

**Kay-Metzeler   Tullis Russell Coatings   Slater Harrison   The Adelphi Group   Kemutec**  
**Shrigley Dyers   Arriva Bus Services   Performing Arts Management   Bollington Civic Society**  
**Bailey Business Park Ltd.   Middlewood Brewers Fayre & Travel Inn   Bollington Town Council**



# BOLLINGTON

