



BOLLINGTON *Live!*

Number Twenty Six

Autumn 2002



IN THIS ISSUE:

**Future of the Arts Centre
Phil sweeps 'em off their feet!
Farewell to Myfanwy
Long Service Certificate**



K & S BUILDERS for all building services

Home extensions and general property repairs

FREE QUOTATIONS: 572861

EAST CHESHIRE

properties

For Landlords who require....

- Unrivalled personal service
- Full range of services
- Reliable Advice
- Competitive Fees & NO VAT
- Dependable Tenants
- A Firm that ONLY lets & manages RESIDENTIAL PROPERTY

*We provide the answers.
We aim to serve & delight our clients*

For Tenants who seek....

- The BEST PROPERTIES in Bollington & Macclesfield
- Professional help & advice
- Value for Money

phone lines open from
9am to 9pm, 7 days

Tel: 01625 576287 Fax: 01625 576976

A D FIRTH & CO SOLICITORS BOLLINGTON 01625 261840

ACCIDENT CLAIMS no win no fee

(road traffic accidents~accidents at work~slip or trip)

15 years experience ~ Member of Association of Personal Injury Lawyers
also

FIXED FEE CONVEYANCING ~ DEBT COLLECTION ~ CONTRACT DISPUTES
WILLS ~ LICENSING APPLICATIONS ~ MOTORING OFFENCES

FREE INITIAL INTERVIEW ~ HOME VISITS AVAILABLE

CHERYL EVANS MIGHT Complimentary Therapist

Cheryl offers you these alternative treatments:

REFLEXOLOGY * AROMATHERAPY * REIKI
INDIAN HEAD MASSAGE * HOPI EAR CANDLES

Tel. 01625 575089 or: 07879 261813



PRESTBURY NURSERIES

Quality Garden Plants and Sundries

London Road, Prestbury, Macclesfield, Cheshire SK10 4DY

Tel: 01625 828748



SUPPORT YOUR LOCAL PHARMACY

Can't get your favourite product in the big stores?

*We offer a good range of
Medicines and Toiletries but are happy
to order a single item especially for you, if we can.*



Walter Lord Ltd.



71 Wellington Road, Bollington Tel: 01625 574401



BOLLINGTON LEISURE CENTRE



FULLY EQUIPPED GYM & FITNESS CENTRE

20M SWIMMING POOL

SWIMMING LESSONS FOR 3 YEAR OLDS TO ADULTS

HEALTH CENTRE WITH SAUNA AND HIGH PRESSURE SUNBED

BEAUTY TREATMENTS, MASSAGE, REFLEXOLOGY & CHIROPODY

AEROBICS AND OTHER FITNESS CLASSES

2 HIGH QUALITY, COMPETITION SQUASH COURTS

CHILDRENS SOFTCENTRE

FULLY LICENSED BAR AND FUNCTION ROOMS

HOLMES ~ NADEN

INDEPENDENT ESTATE AGENTS

A professional and personal service, from open
market appraisal to completion of property sales

- ★ *Open 7 days a week*
- ★ *Free open market appraisal*
- ★ *Independent financial advice available*

Bollington Office: 78 Palmerston Street, Bollington, SK10 5PW

Telephone: 01625 560535

Prestbury Office: The Village, Prestbury SK10 4DS

Telephone: 01625 828254

The Carpet House

The Basement,
Lower Ground Floor,
Pickford Street Mill,
Pickford Street,
Macclesfield SK11 6JD.

Tel: (01625) 420583

M. CHADWICK



NEWSAGENTS &
LOCAL LOTTERY AGENTS



Home delivery of Newspapers & Magazines

Seven days a week

70 Palmerston Street

Tel: 572306

www.JPLMULTIMEDIA.com

Web Design &
Site Hosting

Personal & Group
IT Training

Multimedia
Design

Graphic
Design



Proprietor: John Leaver BSc MA PGCE FRSA

e-mail: help@jplmultimedia.com

Tel: 07721 460 546



Bollington Live! is published three times a year on a non-profitmaking basis, with free distribution to households in the town. Under the editorial banner of "Bollington, a town in its own right!" we aim to promote local concerns. Contributions are welcome to:

The Editor, c/o Bollington Printshop, The Old Stables, Queen St., Bollington SK10 5PS

Bollington Live! is published by Bollington Arts Centre & Bollington Civic Society, Wellington Road, Bollington, Cheshire SK10 5JL. Registered Charity No. 515096

Cover: *The performing arts have long been part of Bollington's cultural life. This picture is from the 'Bollington Follies' in the nineteen-twenties. If anybody remembers anything about the event please contact us!*

Editor Tim Neale (01625 576397)
e-mail: bollylive@oldbro.org

Editorial Team ... Graham Barrow, Anthony Holland
John Coope, John & Penny Liley,
Jose Spinks, Peter Nottage,
Emily White, Simon Nottage

Advertising Dennis Caulfield (01625 572538)
Mark Stedman (01625 575227)

Distribution Martyn Parry (01625 575093)

Printed by Bollington Printshop (01625 574828)

Cartoons by Matt Wray

What Future for the Arts in Bollington?

Some 15 years ago Dr John Coope who, together with his wife Jean, has made such contribution to life in Bollington, brought together a group of local societies to restore the old Methodist school building, off Wellington Road, to create the Bollington Arts Centre. This was quite an achievement for a small town with a population, at the time, of under 7,000. Since then a dedicated group of volunteers has used the building for amateur music and theatrical productions and attracted professional groups to perform. Most notable have been the regular chamber concerts and recently the 'Jazz at the Arts Centre' series.

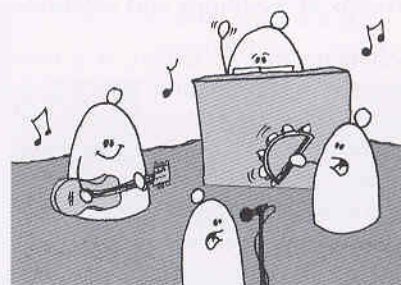
About 5 years ago over £100,000, raised from donations, and the Arts Lottery Fund, was used to extend the bar and create a light and attractive art gallery area.

But what is the future for the amateur and professional arts in Bollington? Most of the original activists are well into retirement age and the successful centre is often felt to be too small to be in any sense commercially viable.

One of the on-going debates is how to strike the balance between providing a venue and focus for local voluntary groups to meet, practice and perform with the organising and funding of professional performances. Is there the time, energy and space to do both? Some people feel that a part or even full-time arts officer would help and also give the stimulus to attract more volunteers, improve promotion and gain further grants.

Just over the road, above the library, is the Civic Hall, managed by Macclesfield Borough Council. This building is also used for community and arts events - so here's my suggestion: Why not combine the two venues and run them as a co-ordinated pair, by the same organisation? The Civic Hall costs the Borough Council a considerable annual sum to manage. Why not

form a partnership between the Borough Council and the Arts Centre Trust in Bollington? The Borough Council could give an annual grant to a revitalised Arts Centre Trust at or slightly below the present annual deficit for running the Civic Hall. The Trust could then employ a part or full-time manager and have a marketing budget. The Borough could have a representative on the Trust and the two buildings could be



managed and promoted together. Possibly even our own Bollington Town Council and Cheshire County Council might find small extra grants to help?

This arrangement could produce the flexibility and scale to both provide space for local arts groups and attract and promote professional performances. The marketing would get a boost through having a dedicated officer and the financial viability of the whole concern would be improved. There are a lot of newcomers arriving in Bollington, occupying the new properties and the restored mills. Some of these younger people will have an interest in music, art and theatre and may be attracted to contribute, thus giving a new impetus to the Bollington Arts Centre.

Just an idea! All comments to *Bollington Live!* are welcome. GB

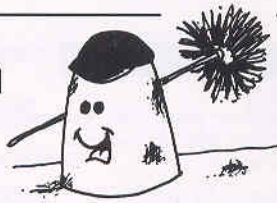


CRIME & POLICE SURVEY

How should a town like Bollington be policed? Have you suffered from any type of crime recently? What happened and how well do you feel the police handled it? To find out your views we have enclosed a survey form in this magazine for you to respond to. We will analyse the results and publish our findings in a future edition of *Bollington Live!* as well as passing our findings on to the Police.



Phil Sweeps 'em off their feet!



George II was en-route to his wedding when his horse bolted. A chimney sweep jumped to his rescue, slowing the horse and thereby saving the king. His Majesty was so grateful he pronounced chimney sweeps as bringers of good fortune, especially at weddings. Hence the tradition of 'lucky' chimney sweeps at weddings and celebrations.

Bollingtonian Phil Green, is a well known figure around our town, mainly as a chimney sweep, but also as a fire fighter of nearly 25 years (he is driver of the engine and proud to be the longest serving officer at the station). A few years ago, Phil was invited to a local wedding as a sweep and duly arrived in Victorian attire (a la Dick Van Dyke) to greet the Bride and Groom after the service. His appearance made such an impression that since then Phil has travelled to many weddings and made the 'lucky sweep' an interesting strand to his business. But his most important appearance was on the beautiful old cruise liner The Queen Mary, in Los Angeles when he married his own blushing bride the lovely Suzanne.



Suzanne didn't realise just how much her luck was about to change when she stopped Bollington's chimney sweep only two months after her beloved husband was killed on their motorcycle when it blew up beneath them. Phil was sitting on an exact copy of that bike, which prompted Suzanne to stop her car and warn

him of the possible danger. When Phil heard what had happened, he took it upon himself to look out for Suzanne and helped to re-build her shattered life. They eventually combined two very different homes and Phil adopted a menagerie of pets and ornaments into a once squeaky-clean bachelor pad.

As more and more people seemed to want a 'Lucky Sweep' to attend their weddings, Phil & Suzanne started to attend Wedding Fairs together to promote the service. The couple ultimately found themselves planning their own wedding. Suzanne found a lovely dress design at one of the Fairs and they decided Phil would wear his traditional Chimney Sweep outfit. Unsure of where and how to be married, Suzanne was concentrating on organising the Honeymoon of a lifetime when she



spotted that the Queen Mary, now moored permanently in Long Beach, California, had a Wedding Chapel on board complete with a ship's Captain to perform the marriage service. So In late April 2002 they headed out to San Francisco. Suzanne says "I felt as though I had stepped back in time, when I left our cabin in my wedding dress and made my way along the teak decks to the Chapel where the Captain and Philip were waiting. I had to smile when I met a couple by the Wedding chapel who urged me to find the Chimney Sweep they had seen earlier ...because it would bring me luck! - I should have asked them how lucky it was to marry one!"

Mary Poppins was right, good luck **does** rub off those chimney sweeps!

SG & PL

Bollington CHRISTIAN LIFE CHURCH

Services every Sunday at 11am

A vibrant church for all ages.
Mums and Tots
Concerts
Alpha courses
Life Recovery Groups
Children and Youthwork

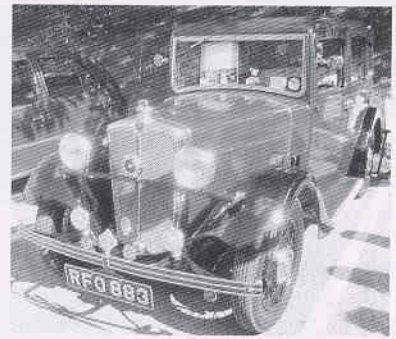


Christian life Church . Hawthorn road . Bollington. 01625 575296
we are here for you...

Extravagant Congratulations!...

... go to Bollington Town Council, Alan Simmons, Palmerston Travel and all others involved in the organisation of the 3rd Great Transport Extravaganza, held recently at the Adelphi Mill and Bailey Business Park.

The kids of Class 3 Bollington Cross School wanted to learn how to make a magazine, so I went to the school and chatted about the production of **Bollington Live!**. Then they then went to work to produce their very own own feature about the Transport Extravaganza. With help from their teacher Miss Hughes they worked in teams to write the text and draw the pictures. Here is the result...



Just some of the exhibits at this years' festival



On yer Bike...

We saw a weird bike with one big wheel and a little wheel. We wondered if there were any brakes. The family wondered how you got on the bike. This friendly man held the handles of the bike, the person that owned the bike climbed on the wall to get on the bike and then yelled "thank you" to the helpful man and peddled off down the road.



Posh Cars

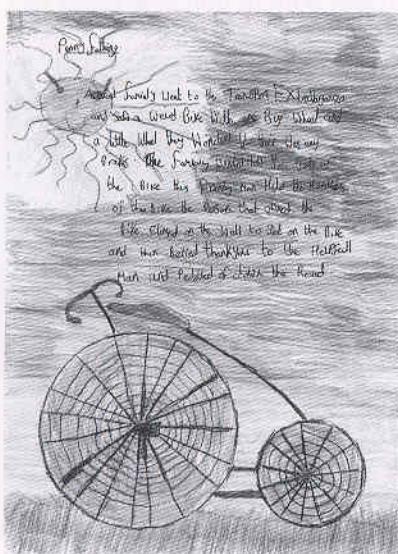
A group of people decided to have a nice peaceful walk and were disturbed by the roaring of car engines. They were all at the Transport Extravaganza. Some people brought some old soft top cars from way back in the past and some from 2002. They were dated from 1965 to modern days. There were hundreds of posh cars, posh in the sense that they were soft-top cars. Every single car was polished, waxed and scrubbed.

Ice Cream

People were crowded around the magnificent Ice Cream van. There were twisties, super strawberry and vanilla ice creams..not forgetting chocolate and the van had balloons and it was blazing white. The fantastic ice cream van had men women and babies gathering around it because they loved the ice creams.

A lorry, lorry laughs

A local boy travelled from Rainow with his family to the Transport Festival. He was surprised at how enjoyable the festival was. Once he had walked through the amazing stalls, he came to the lorry..... WOW!!! The lorry was as big as a camper van and it was green with white lines through the middle.



Everything that glisters...

Instead of watching TV a girl decided to go along with her family to the Transport Festival. Her favourite coloured car was a shiny, sparkly, glittering, slightly silvery, golden Mini car.





Long Service Certificate

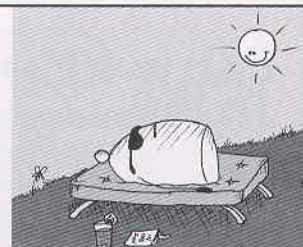
Ian and Steve Broster, local builders, have set *Bollington Live!* a challenge: to find the family of Joseph Stubbs and return a magnificent Long Service Certificate. Back in the 1970s the Brosters found the framed Certificate; it was hanging on the wall of an empty house on High Street that they were about to renovate. They were unable to trace the Stubbs family and so stored the picture at their workshop, thirty years on they rediscovered it!

Joseph Stubbs was presented with the Certificate on May 1st. 1931 'in recognition of faithful service rendered during the past 40 years' by the Thomas Oliver Mill, also known as The Waterhouse. The drawing of the mill shows the vast building that once stood on the Kay Metzeler site before it was demolished in 1961.

Should anyone in the village know the descendants of Joseph Stubbs, please contact Penny Liley on (01625) 572348 to lay claim; proof of ownership required! If we fail to trace his family, the Certificate will be presented to The Waterhouse Medical Centre, as a record of Bollington's cotton spinning and weaving heritage.

For those of you wishing to see a colour print of the original certificate, one is on display in Bollington Printshop.

Gimee some... Skin



Like most living and breathing things skin enjoys air, water and some sunlight. It does not like synthetic chemicals such as shower gel, deodorants, cleaning sprays, bleach, disinfectants or biological washing powders. Even tiny traces can end up on your undies or bedclothes and your skin may protest by itching or a rash. Plenty of water is needed to rinse your clothes, and rubbing dry with a towel improves circulation.

Bones and other organs need Vitamin D to repair damaged tissues. It is difficult to eat enough (unless you eat a lot of oily fish) so the skin makes up the deficit by using sunlight to make Vitamin D. This is absorbed into the bloodstream and stored in the liver, modified in the kidneys and used when needed to repair the tissues. Your holiday in the sun is still helping the bones six months later! If you use sun-block it helps to prevent skin cancer but does not stop the formation of Vitamin D. About fifteen minutes daily exposure of face and hands to outdoor light is sufficient to top up Vitamin D levels. However we are more likely to suffer from over- rather than underexposure to the sun. Skin cancers are common and if you are fair skinned and burn or don't tan easily you are at greater risk. Cumulative exposure over many years causes problems and we would do well to follow the Australian example of 'slip' 'slap' and 'slop' - slip on clothing or stay in the shade, slap on a hat and slop on high factor (20+) sun-cream.

Even if you think 'cancer won't happen to me' just beware of wrinkles, sunspots and premature aging (which is also the result of heavy smoking).

Skin is absorbent and can be used to transport drugs from adhesive patches or cream into the bloodstream (anything from hormones to nicotine and opiates). This is useful in people who are nauseated and unable to take tablets, also it prevents the immediate destruction in the liver of most of the drugs absorbed from the gut.

Skin controls body temperature by evaporation and sweating which contains salt and water so if it is very hot you need to take a little more salt and a lot more water.

Dr. Jean Coope, Dr. Val Ramsden

THE DELI & SPICE Co.

GREAT IDEAS FOR CHRISTMAS AT THE DELI.
WE ARE NOW TAKING ORDERS FOR OUR BESPOKE
CHRISTMAS HAMPERS.

WE ALSO HAVE GREAT INDIVIDUAL GIFT IDEAS NOW IN
STOCK. DON'T FORGET, JUST LIKE LAST YEAR,
YOU CAN ORDER YOUR WHOLE OR HALF SIZE PATES,
FINE CHEESES, CHARCUTERIE, HAND MADE
CHOCOLATE AND PATISSERIE.

EITHER CALL OR 'PHONE IN YOUR ORDER WITH YOUR
PREFERRED COLLECTION DATE AND WE'LL DO THE
REST. PLEASE NOTE, WE WILL BE OPEN ON THE
SUNDAY & MONDAY BEFORE CHRISTMAS!

CHRISTMAS OPENING HOURS

OPEN: SUNDAY, 22ND DECEMBER (DELI ONLY) 11 - 2 P.M.
OPEN: MONDAY, 23RD DECEMBER (DELI ONLY) 10 - 3 P.M.
OPEN: CHRISTMAS EVE (DELI & COFFEE BAR) 10 - 3 P.M.
CLOSED CHRISTMAS DAY & BOXING DAY
OPEN: FRIDAY, 27TH DECEMBER
(DELI & COFFEE BAR) 11 - 3 P.M.
OPEN: SATURDAY, 28TH DECEMBER NORMAL HOURS
OPEN: MONDAY 30TH DECEMBER (DELI ONLY) 10 - 2 P.M.
OPEN: NEW YEAR'S EVE (DELI & COFFEE BAR) 10 - 3 P.M.

HAVE A GREAT TIME
AND THANK YOU FOR YOUR CUSTOM.

68 PALMERSTON STREET, BOLLINGTON
TEL: 01625 578140

BOLLINGTON PRINTSHOP

At last ...we can now offer a
COLOUR PHOTOCOPYING SERVICE
- while you wait -

We can digitally print photographs or artwork up to A1 size, & copy up to A3.
Single or Double Sided, Paper or Board, from Single Sheets to Long Runs.
Flat Sheets / Booklets / Newsletters / Invitations / Flyers etc, etc.
at EXTREMELY competitive prices and of a quality you won't believe.

The Old Stables, Queen St., Bollington, Macclesfield, Cheshire SK10 5PS

Tel. 01625 574828 Fax: 01625 574025

Web: www.bollingtonprintshop.co.uk e-mail: sales@bollingtonprintshop.co.uk

• WINDOWS • DOORS • FRENCH DOORS • CONSERVATORIES • REPAIRS •
FASCIAS • SOFFITS • GUTTERS • PORCHES

BOLLINGTON VALLEY

WINDOWS & CONSERVATORIES

Quality Windows & Conservatories



- ✓ FREE design ✓ FREE estimates
- ✓ Everything made to measure
- ✓ High security ✓ Energy saving
- ✓ Care and attention to detail

**CALL TODAY ON
01625 571177**

• WINDOWS • DOORS • FRENCH DOORS • CONSERVATORIES • REPAIRS •
FASCIAS • SOFFITS • GUTTERS • PORCHES

Liberty Green Lord Street, Bollington

2 bedroom apartments from £149,950
Prices correct at time of going to press

01625 562077
www.lindenhomes.co.uk



Hurry - only
8 remaining



Admiring
the views...

...they could
be yours!

In the heart of a sought-after
Cheshire village.

Spectacular views across the mill pond
and stream to Kerridge Hill and
surrounding countryside.

Show home open daily from 10am - 5pm

Selling
Agent

HOLMES & NADEN
INDEPENDENT ESTATE AGENTS

01625 560535

- 25 luxury 2 bedroom, 2 bathroom apartments
- Lift access to all apartments
- Stylish kitchens with oven, hob, hood, fridge/freezer, washer/dryer and slimline dishwasher providing the ultimate in convenience and practicality
- Feel safe and secure thanks to a video entryphone
- Be part of village life, yet enjoy easy access to the area's communication links

LINDEN



BOLLINGTON



NOVEMBER

Friday 22nd, 12-3pm

FASHION SHOW

St. John's School. Display of children's and ladies fashions. In aid of PTA.

Tel: 572025.

Saturday 23rd, 2-4pm

CHRISTMAS FAIR

Bollington Cross School. Christmas Stalls, games, refreshments and a visit from Father Christmas

Saturday, 23rd 8pm

RED RIVER JAZZ MEN

Arts Centre. With Chris Holmes on piano. Tickets £6.

Tel: 574410 or 575287

Friday 29th till Monday
2nd December

WATER COLOUR IMAGES

Arts Centre.
Exhibition by local
artist Glynis Broome.
Sundays 2-4pm and
during other events.



DECEMBER

Sunday 1st, 4.30pm & 7.30pm

CINDERELLA

Arts Centre. Bollington Children's Music Theatre presents an alternative Cinderella. Tel: 0161 427 2870 or www.bcmt.url4life.com

Thursday 5th, 10am - 12noon

NSPCC COFFEE AND MINCE PIES

7 Nab Close. All welcome. £1

Saturday 7th, 10am-12noon

CHRISTMAS COFFEE MORNING

St. John's School. Festive stalls and a visit from Father Christmas as well as music and refreshments.

Tel: 574224.

Saturday 7th, 8pm

DIABOLUS IN MUSICA

Arts Centre. Bollington Chamber concerts presents an evening of authentic sixteenth century music including Elizabethan Christmas music played on a variety of instruments inc. bagpipes & hurdygurdy.

£10 and £5 conc. Tel: 560355 or 575287

Sunday 8th, 7.00pm

A RIGHT TO DIE?

Arts Centre. Lecture by J.Jackson from Dept .Philosophy at Leeds Uni. Discusses the BMAs rejection of voluntary euthanasia. £3 Tel. 573494

Tuesday 17th, 8.00pm

MESSIAH FOR ALL

Arts Centre. Enjoy singing Handel's masterpiece, (and the mince pies!)

£2 at the door for Children in Need

Tel: 573494

Tuesday 24th, 6.30pm

CAROLS AROUND THE TREE

Bollington Town Hall. Join Bollington Brass Band for annual festive singsong.

JANUARY

Friday 10th- Saturday 18th, 7.30pm

'PUSS IN BOOTS'

Arts Centre. For details ring 572527

Sunday 12th 8pm

FITZWILLIAM STRING QUARTET

Macclesfield Heritage Centre.
The quartet perform with Lesley Schartzberger, clarinet. Performance of Brahms Clarinet Quintet. Tickets £7.50
Tel . 560355 or 575287

Sunday 18th, 2.30pm

CHILDREN'S MUSIC THEATRE

Arts Centre. Rehearsals start for the "Happy Prince" , all 7-12 year olds welcome. Tel: 0161 427 2870 or www.bcmt.url4life.com

Friday 24th till Friday 7th March

'EVOLVE'

Arts Centre. Exhibition of textiles by Sarah Lees who currently works at Paradise Mill in Macclesfield.
Sundays: 2-4pm & during other events.
Tel. 01270 876186 for details.

Saturday 25th, 8pm

MART RODGER MANCHESTER JAZZ

Arts Centre. One of the best trad. bands around. Tickets £6.
Tel: 574410 or 575287.

Sunday 26th, 7.30pm

KING DAVID

Methodist Church. Bollington Festival Choir. Piece by Arthur Honegger
More details on 575287

Friday 31st, 7.30pm-11pm

SCOTTISH SOCIAL AND SUPPER

Arts Centre. Entertainment and food, in aid of the NSPCC. Tickets £6,
Tel 575427

FEBRUARY

Saturday 15th 8pm

SMOKEY CITY JAZZ BAND

Arts Centre. Jazz at the Arts Centre.
Tickets £6. Tel: 574410 or 575287.

Sunday 16th, 8pm

'VALENTINES FOOD'

Arts Centre. A cookery demonstration of Italian Food by Enzo Mauro. £5.

Saturday 22nd 8pm

THE CAMBRIDGE SCHOLARS

Arts Centre. Bollington Chamber Concerts present this ensemble of former Choral Scholars. £10 and £5 conc Tel: 560355 or 575287

MARCH

Thursday 6th, 10am-12noon

HISTORICAL WALK 1

Arts Centre. Roger Bowling's first walk with a historical perspective around Bollington. £3.

Thursday 20th, 10am-12noon

HISTORICAL WALK 2

Arts Centre. Roger Bowling's second walk with a historical perspective around Bollington. £3.

Sunday 23rd, 7pm

ICE AGE MANCHESTER

Arts Centre. Bollington University. Hugh Beggs discusses how the deglaciation of the last ice sheet helped shape the slopes, valleys, rivers and soils which underlie present day Greater Manchester. £3 at the door.

Saturday 29th 8pm

TAVEC STRING QUARTET

Arts Centre. Bollington Chamber Concerts present music by Debussy, Wolf and Gilbert. £10 and £5 concs Tel . 560355 or 575287

Saturday 29th 7.30pm

BRASS BAND CONCERT

Methodist Church. Bollington Brass Band and Macclesfield Male Voice Choir Tel . 875322

EVENTS

APRIL

Thursday 3rd, 10am-12noon

HISTORICAL WALK 3

Arts Centre. Roger Bowling's third walk with a historical perspective around Bollington. £3.

Saturday 5th 8pm

YORKSHIRE STOMPERS

Arts Centre. Jazz at the Arts Centre. Tickets £6. Tel: 574410 or 575287.

MAY

Saturday 3rd, 8pm

OLD FASHIONED LOVE BAND

Arts Centre. Jazz at the Arts Centre. Tickets £6. Tel: 574410 or 575287.

Bollington Family History Club

Are you interested in tracing your ancestors? Then join a group of like-minded people guided by Gill Houston who meet in the Arts Centre bar on the first **Thursday** of each month at 10:30am. The cost is £1.00 per session and you can drop in at any time during the morning. For details ring: **872057**



DIABOLUS IN MUSICA

Sat 7th December

Bollington University

The successful language classes in Spanish and Italian during the Autumn are being continued by their tutors in the Spring. These are for those who took the first classes. Anyone who did not attend the first classes but wishes to join should check in advance with the tutor that there will be a space.

Our Winter program also features a interesting series of lectures for gardeners. For any Bollington University information please telephone Dr. John Coope 573494, or write to: Plant Cottage Beeston Brow, Bollington SK10 5PR.

Tuesdays, January 14th, 28th, February 4th 2-3.30pm

HOW TO MAKE A COLOURFUL BORDER

A good flower border has interest all the year round, is easily maintained but never boring. It can provide flowers for the house, food for wildlife, vegetables for the kitchen, homes for sculpture. Jaqui Parker has been a garden designer, landscaper and lecturer for many years. Please bring A4 plain or graph paper, pencil(s), rubber and perhaps a folder. There will be handouts. £3 each lecture, at the door.

LECTURE 1

Arts Centre. The principles of a good border. Covering aspect, soil type, preparing the soil, screening an eyesore and enhancing a view. We will draw a simple plan, perhaps based on a border in your own garden. Also methods of acquiring plants, propagation, seed sowing and division, methods which may save money or provide more choice than the local garden centre.

LECTURE 2

Having decided on what sort of border is required, we will put in the "bones" of the border - the strong shapes of trees and shrubs which will be there all the year round. We will decide on the types of plants we need and how to choose them. We will draw up a planting plan for the trees and shrubs and talk about planting techniques.

LECTURE 3

Having achieved good structure and well-grown plants we can now add the "pretties", using obelisks, plunge planting, weaving and tying plants, techniques which make a good border into something very eye-catching.

Wednesdays, commencing February 15th 10.30am-12noon

ITALIAN CONTINUATION CLASS

Arts Centre. A further series of 10 sessions. Fee £30. Tel Audrey Parnell on 572130

Thursdays, commencing January 16th 2.30-4pm

SPANISH CONTINUATION CLASS

Arts Centre. A further series of 10 sessions. Fee £30. Tel Anne Morton on 611483

SCOUT LEADER REQUIRED... Urgently by 2nd Bollington Scouts.

There has been no active scout troop in Bollington for over a year because of the lack of a leader. If you would like to help call Mike Garrity on 575549.

NSPCC

The Bollington district NSPCC needs the help of new people. The committee meets about 8 times each year. They have many fun fund raising events such as quizzes, bar-b-q, and fashion shows. Future events are in the detailed listings. To get involved phone Chris Egerton on 572975, Mary Bowen on 572490 or Sonia Greensmith on 574124.

Palmerston Travel

Independent travel advice on a vast variety of travel arrangements

A wide choice of
MAJOR TOUR OPERATORS
and
SPECIALIST COMPANIES

TAILOR-MADE arrangements

DISCOUNTED worldwide AIR TICKETS

BUSINESS TRAVEL



Fully ABTA bonded

Palmerston Travel

15 High Street, Bollington, Macclesfield, Cheshire SK10 5PH

Tel. 01625 574448 Fax. 01625 575926

WEST BOLLINGTON POST OFFICE

on Wellington Road - your local car tax office

Now Open:

Mon to Fri: 9.00am to 5.30pm Sat: 9.00am to 12.30pm

*Superb Greetings Cards & Stationery
Toys & Gifts for all occasions
Children's Books & Local Maps*

MAJOR STORES' GIFT TOKENS

** Dry Cleaning * Cash's Name Tapes **

65 Wellington Road Bollington Macclesfield SK10 5HT
Tel: 01625 572378

Burn British

J. Kirk & Co.

Coal & Smokeless Fuel Merchants

Tel. 01625 573131

Bay Tree House, Hedgerow, Rainow Cheshire SK10 5DA
*Bunkers * Logs * Kindling * Fire Spares*

Buy British!



RED JOINERY

Joinery Manufacturers D.I.Y & Timber Suppliers
Now at Needham's Wharf, Hurst Lane, Bollington

Windows Doors
Stairs Kitchens
DIY Timber
Machined & Delivered

Tel: 01625 572128

Chris Plant Dental Lab

DENTURE REPAIRS

2nd Floor, Adelphi mill, Grimshaw lane, Bollington

Tel. 01625 560881



OLDBURY & CRUICKSHANK
OPTICIANS

69 Pickford Street
Macclesfield, SK11 6JD
Tel: 01625 615002

10 Congleton Road
Sandbach, CW11 0DA
Tel: 01270 766870

THORNEYCROFT

& Co

S O L I C I T O R S

CONVEYANCING DIRECT
Fixed Price

Home conveyancing
NO SALE - NO FEE

FOR CONVEYANCING AUTOQUOTE
www.thorneycrofts.co.uk

FREEPHONE: 0500-344220

TB

The Bollington Group

- Corporate Risks
- Motor Trade Insurance
- Personal Lines
- Financial Services
- Commercial Insurance

Palmerston House
Palmerston Street
Bollington, Macclesfield
Cheshire SK10 5PW

Tel: 01625 574342
Fax: 01625 574879

Adlington House
Adlington Road
Bollington, Macclesfield
Cheshire SK10 5HQ

Tel: 01625 576655
Fax: 01625 574879

Email: enquiries@bollington.com
Website: www.bollington.com

Dear Old Myf...

Myfanwy Jones died in August aged 90.

Sally Smith remembers her.

Dear Old Myf. There were times when you were open mouthed at her erudition, times when you were caught up in her passions, and times when she was totally irritating in her obstinacy.

Whatever your immediate reaction Myf was difficult to ignore.

We had much in common: newcomers to Bollington at the same time, a life-long involvement in music, a delight in hill walking, and both of us had followed husbands abroad, bringing up families within a foreign culture. Any common denominator was a bonding opportunity with super glue for Myf, but far from being suffocating her affection was for me flattering and irresistible.

There were considerable differences too. She was a scientist with a degree in biology, a committed Liberal supporter and an almost fanatical cricket follower. Nothing against cricket, I just hadn't committed the Lancashire team list to memory.

Myf's thirst for knowledge, in all her interests, made her not only an expert, but humble with it. She could give you chapter and verse on Lake District walks, had a close friendship with Vaughan Williams ("he used to call me his niece" she would confide with a naughty twinkle in her eye), and accepted post colonial life in India with an enthusiasm that might have made Ghandi think twice. She would certainly have loved the chance to argue with him: heated discussion was a favourite pastime.

Whatever her memories, stories or stance she was always ready to learn more, soak up any new information and adjust her thinking where necessary.

Myf's most annoying trait was her irritation with herself. Increasing hearing problems, poor eyesight and lack of mobility all made her rather impatient, particularly if she thought she was missing out in company.



Myfanwy Jones 1912-2002

Some of my most precious memories are of Christmas Day, which became an unspoken tradition. Late morning was a climb up White Nancy. As walking became more difficult we arranged to carry her up, and the younger and more virile male assistance, the more she revelled in it. Then on to her son's family for Christmas dinner, and finally to our home for a second dinner and games. These fell into two categories: games she had played but could only remember half the rules, and games we knew but she only heard half the rules. Either way she was determined to win and we were helpless with laughter.

Her infirmities were the only age difference Myf recognised. It really didn't matter if you were her age, forty years younger or seventy years younger, you were treated to the same earnest approach and total concentration. She was never condescending, always grateful and never outstayed her welcome.

How many ninety year olds can boast that and how I shall miss her.

JAZZ -at The Arts Centre

The monthly "winter" Jazz events have become increasingly popular and are regularly sold out.

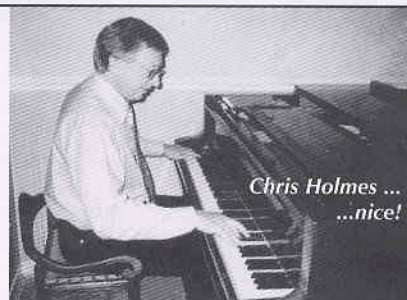
Having already played host to many of the top bands in the Northwest, October's offering was a sensational band from the Southeast, "Chris Watford's Chicago Footwarmers" with the amazing Charlie Connor on soprano sax.

As if their playing wasn't enough of a story, Chris Watford, the leader suffered a brain haemorrhage in 1976, which meant that he didn't play for 19 years! Happily he's now

recovered and playing again, what an inspiration!

To prove that Chris is not the only jazz-man with courage in abundance November's band "The Red River Jazzmen" had Doug Whalley on trumpet. Three years ago Doug, who played right-handed, was hit by a massive stroke, which so disabled his right hand that he had to learn to play again, left-handed and has lost none of his fire.

Also playing with the "Reds" was Chris Holmes on piano. A world class musician.



*Chris Holmes ...
...nice!*

There will be eight concerts next year and the first few are already booked. If there is a band which anybody would particularly like to see then phone Bernard Selby on 574410 and he will see what can be arranged. Tickets cost £6 at present and are available up to a month in advance on 574410 or 575287.

The future of the Community Centre on Ovenhouse Lane looks rather more secure than it did 18 months ago thanks to a small group who have formed themselves into a steering committee and worked closely with the County, Borough and Town councils to pave a way forward.

BOLLINGTON COMMUNITY CENTRE

The Centre on Ovenhouse Lane was originally opened in the nineteen sixties to provide the elderly residents of the Bollington Cross area with a community room where social events and 'Day Care' facilities could be held. Over the years this facility has been extremely valuable to the well-being of the local community. The substantial building comprises a large community room and kitchen



on the ground floor, together with a flat on the first floor. Originally this was used by the resident warden, but in the last few years the Borough Council have replaced their wardens with a mobile 24 hour, 7 day a week service and, as a result, the flat is now unused.



The Centre has been in continuous use during this period with Social Services providing excellent 'Day Care' services for the elderly residents on 4 days each week. In addition the WRVS provide a freshly cooked meal each Wednesday; which is available for a small charge, to elderly residents of Bollington. The Tuesday evening bingo session has continued to be very popular together with other activities such as the Dancing and Flower Arranging

Clubs. All of these organisations have, in the past, been able to use the Centre free of charge but due to changes in Local Authority funding in recent years, the Borough Council recently introduced modest charges for the use of the building to ensure that the building is financially self sufficient. The result of making a charge has meant that the Dancing Club and the Evergreen Club sadly felt unable to continue. If these problems were not enough the Centre now needs 'upgrading', and the Housing Department is unable to provide any funding, so the future of the Centre was in doubt.

The Steering Committee has worked closely with the Borough Housing Department to ensure the long-term viability of the Centre. The Committee is aiming to sign a 20 year lease taking over the day-to-day management. The Committee will have access to grants (unavailable to the Council) to enable the Centre to be upgraded and expand the facilities to benefit the wider community.

The Housing Department has found the money to install disabled toilets, emergency lighting and fire detectors, but this is only a small proportion of the work needed to bring the building up to current standards. For instance, the entrance way needs improving to provide better access to the toilets and the upstairs rooms. The main function room needs re-carpeting, and we want to turn the 1st floor into small meeting rooms, etc. The full list of improvements, I can assure you, is much longer! Just think, this building has had virtually no money spent on it for 30 years.

The Borough Council have bent over backwards to help and support us, so much so, 2 employees of the Housing Department have joined

the Committee, in a personal capacity, as they are so committed to the success of the Centre. However, the Committee is still small and we are looking for new members to bolster our skills, so if there is anyone who would be interested in getting involved please contact me, **Pat Haddleton, 01625 575557**. We will also be looking for a caretaker to look after the day-to-day bookings etc., and generally ensure the efficient running of the Centre.

We are aiming to widen the use of the Centre, not only for the elderly but also for the community as a whole. Social Services will still have priority over the use of the Centre during the week, but there are several late afternoons and evenings when it is free and especially at the weekends. Therefore, if you are a



member of a club or society looking for somewhere to meet, why not contact us and come and see what facilities are available.

The refurbished Community Centre will be too good a facility for Bollington to lose through under-use. Please help us make it a success.

PH

PICTURED IN THE ARTICLE:

*H. Oldfield, Ken Berry
David Robinson, Norman Shatwell
Annie Ainsworth & Muriel Burkes
Volunteer: Eva Cannon*



Letters to the Editor



A Sort Of Homecoming

There is one extremely good reason that I now find myself living in Bollington, but more about her later. However, since I moved to the village in June of this year, other good reasons have materialised for living in the self styled 'Happy Valley'.

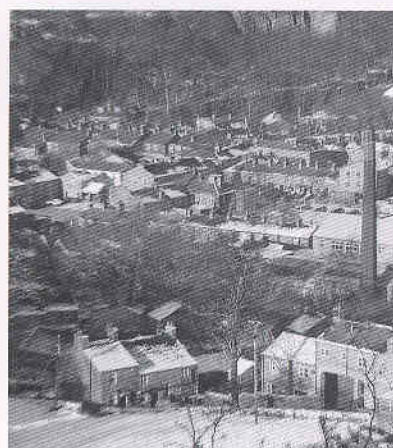
My first recollection of the village was during my late teens, whilst at school in the Lancashire mining and mill town of Leigh, near Wigan. As we sat and listened to tapes in the Sixth form common room, Bollington was referenced by pub-rock band The Macc Lads, who represented the boil-on-the-behind of the flourishing 'Madchester' music scene of the early 1990's.

Several years later when I began work in Wilmslow, I met real Bollingtonians for the first time. Thankfully, they ultimately dispelled any preconceptions I may have had about the village and its inhabitants, which had been previously suggested by the culturally challenged 'Macc Lads.'

My first visit to Bollington was a work-related affair. We convened in the Church House. Sadly I couldn't indulge in a few of their fine ales on that occasion because of driving duties and the long autumnal night meant that I

wasn't aware of the magnificent rural setting in which the village is situated.

A few years later, it was moonlight and music and love and romance that next brought me to the village. The young lady that enticed me here



was bred in Bollington and after a courtship lasting a couple of years and thousands of miles travelling, we decided that we should start to live together.

And so it was that, during the second week of this year's football World Cup tournament, I returned to the North West of England, after three and a half years living in Copenhagen. As an articulated lorry pulled into our street, a roar went up, and two Danish-shirted removal men experienced the full wrath of ten-year-old English football hooligans, Bollington-style. They almost pestered the modern day Vikings to death.

The Danes were overwhelmed. The Bollingtonian inquisition began, as question after question was fired at them. The subject matter ranged from "What's the Danish word for hello", to "Who's gonna win on Saturday"? The removal men obliged with perfect answers in English, and the warm response from the home fans made the task of conveying my worldly goods indoors a much more pleasurable experience. No doubt they speak fondly and

warmly, back home in Denmark, of the experience they had in Bollington (and how they couldn't drive their truck under the canal tunnel on Grimshaw Lane).

Once settled into the village, I began to explore and become accustomed to the layout. I also wondered where my new co-habitee had managed to acquire her vast collection of clothes and footwear that inflate the

wardrobes at home. It clearly wasn't in Bollington. Where is the shopping mall, with its boutiques offering an exclusive selection of designer dresses, or shoe shops containing the latest Italian designs? I suspect she may have left the valley from time to time to stock up.

And where are the discotheques pumping out the latest radio friendly techno tunes for my better half to merrily dance away the wee small hours? And believe me she likes to dance. I'd wager that she didn't learn all the moves to the 'Birdie Song' or 'YMCA' in Bollington.

Obviously Bollington is not the place to go for shopping malls and nightclubs. I've also noticed that Bollington doesn't really have a main focal point, White Nancy accepted; there is no real centre in the village. This somehow gives the impression that the village is much larger than a place that currently boasts just seven thousand

continued overleaf ...

Views of Bollington:

*Clarence Mill and the canal from Hurst Lane Bridge
the village in snow, from White Nancy*

...continued from page 13

inhabitants. There have been several occasions where I have found myself in an unexpected part of the village; such is the complex web of roads that is strewn along the valley.

I have also been fortunate that my future in-laws have made me extremely welcome, educated me about the village they moved to more than thirty years ago, and the array of characters they have grown to know and love. The recent Transport Extravaganza held in September impressed me, demonstrating a real sense of community, with contributions and attendance from people across the full age spectrum.

Two Christmases ago I first climbed the snow covered peak to meet White Nancy for the first time. An unbroken blue sky and brilliant sunshine lit up the whole of the North West of England before me, and took my breath away. Subsequent visits equipped with binoculars have enabled me to pick out 'home', beyond the stockbroker belt, and Old Trafford, in the distance. And that is the reassuring thing about living in Bollington. It is never very far away from anywhere, and it has already become for me a home away from home. KS

...Continued from back page

It was hard work, but we made it to the bridge at Holehouse Lane without any mishaps and with a few strange looks from folk who obviously thought we were lost. We took the boat up onto the road, trawled it the fifty odd yards to the canal bridge, removed the trolley and slid the canoe down the steps into its natural home. the water. It was rather like letting an injured dolphin back into the wild.

Now the easy bit, paddle back along the canal, past the newly reopened path that leads to the newly reopened Vale pub, over the aqueduct and disembark at the gate by Hawthorn Rd. Back on the trolley, down the hill and onto the Middlewood Way again, over the viaduct and down the track to the car.

Well, the trolley worked, it'll have to do much tougher work in a couple of weeks in Scotland, but so far so good! Perhaps in the next issue I'll tell you about the expedition itself.

TN

Bollington & District Horticultural Society - a growth area!

Almost forty years ago, a group of enthusiasts formed a society that has flourished ever since.

Some of the original members are still active & we are all willing to discuss any gardening subject, sometimes with little chance of agreement but plenty of lively banter.

Meetings are held each third Thursday in the month at Pott Shrigley School, with trips to centres of gardening interest during the summer.

As gardening tastes have changed over the years so have the topics for discussion. There is still a place for the real enthusiast wanting to know how to grow, when to grow & where to grow, but wider issues are also included: topics have ranged from how to grow the perfect sweet pea, and how show judges work, to a floral walk in the foothills of the Himalayas, collecting hellebores in the middle of the Bosnian War, & even appearing in a Gardeners Question Time Show for cable TV.

Whatever the subject, the basic aim of the society is to exchange information in a convivial manner.

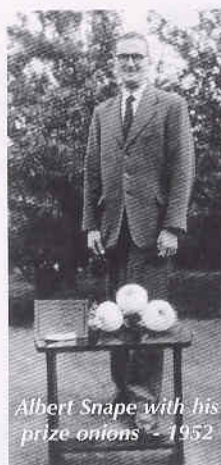
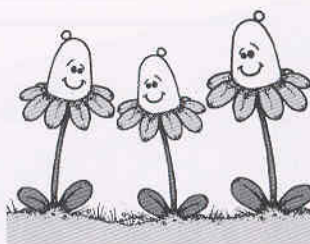
There are two shows each year, spring and autumn, held at the Civic Hall, the Spring Show on the first Saturday in March is possibly the earliest event of its type in the

country- certainly the first to be advertised in The Garden News. It has been rumoured that one or two members have been known to use a blowlamp to melt the frozen ground and unearth their daffodil bulbs at just the right time for potting up in time for the early show.

Competition is fierce & old rivalries are renewed at each show and it must not be forgotten that the affiliated Flower Arranging Club makes a tremendous contribution to both shows with its imaginative and ever-varied designs.

Membership is well over a hundred, with a bargain annual membership fee of just four pounds, & concessions for pensioners. Entrance to each show is just fifty pence. Member June Robinson bakes 60 full size cakes of differing ingredients for each show & sells them all, with orders for the next show taken well in advance. Again, there is an opinion that some visitors look for the refreshments first!

If you wish to become a member, contact either the secretary Jaqui Parker on 01625 560234, or chairperson Wendy Stoddart on 01625 422371. You won't regret it.



Memories Flood Back!

Do you know when this was taken? What memories do you have of this flood?

Write to: Bollington Live!
c/o Bollington Print Shop



The Bollington

Village Store
High Street, Bollington

Grocery & Dairy Produce
Bread & Cakes
Fruit & Veg.
Cigarettes / Off Licence

Open 8am - 10pm
7 Days a Week



Hollin Hall

(formerly the Belgrade Hotel)

Jackson Lane, Bollington, Nr. Macclesfield, Cheshire SK10 5BG
Tel: 01625 573246 Fax: 01625 574791

Saturday Dec 29th

Christmas Dinner Dance - £15.00
or stay the night - Dinner Dance - b&b - £32.50

Friday Jan 17th

60's & 70's Disco - 2 for 1
4 Course Meal & Dancing - £10.00

Friday Jan 10th

70's & 80's Disco - 2 for 1
4 Course Meal & Dancing - £10.00

Friday Jan 24th

Burns Night Dinner & Dance
4 Course themed Meal & Disco - £13.50

price per person

Lunches Served Every Sunday 12.30 - 2.00pm

STILL ONLY £10.95 per person for a 5 Course traditional Sunday Lunch

Dinner Served every Monday - Saturday evening

from 7.00pm to 9.30pm in our "3 Keys" Restaurant.

To make a reservation or for further details, please contact us on 01625 573246



J.J.J. HEATHCOTE LTD.

From our own LOCAL FARMS
for Beef Pork & Lamb

Palmerston Street, Bollington: 572202 Slaughterhouse: 572012
114 Wellington Road: 573172 5 Fountain Place, Poynton: 872154



Every child is an
achiever

WITH THE KUMON MATHS PROGRAMME

- From mental arithmetic to calculus
- Complements the school curriculum
- Suitable for all ages and abilities
- Over 500 centres nationwide
- 3 million students worldwide
- Confidence building



Call Ann on: **01625 828973**
at the Prestbury Centre

**michael
HART**
& COMPANY

**CHARTERED SURVEYORS
LAND and ESTATE AGENTS
AUCTIONEERS and VALUERS**

2 Henshall Road Bollington Cheshire SK10 5HX
telephone Bollington 01625 575578
fax Bollington 01625 576713
e-mail info@michael-hart.co.uk

FREE Pre-sale valuations & advice
Full property letting & management service
All types of surveys and valuations undertaken
Independent mortgage advice

www.michael-hart.co.uk

Also at: 36 Park Lane Poynton Cheshire SK12 1RE telephone 01625 876331

J.A. McNULTY

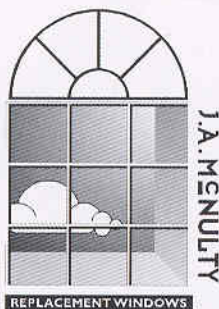
UPVC & JOINERY MANUFACTURERS

Soft & Hardwood Windows, Doors
Conservatories, Porches etc.
Phone or call in for free quote
- no obligation.

**OPEN FROM
MONDAY TO FRIDAY**

Ingersley Vale, Bollington SK10 5BP

Tel. 01625 574508 Fax: 01625 576248



GRAPHIC

designer

CONTACT
LUCY EMMERICH
01625 425953

available for all your
business cards and stationary
brochures and leaflets
letterheads and c.v.'s
from initial ideas to finished print

**Marie
Ann**
HAIRDRESSER

9 Grimshaw Lane, Bollington

Tel: 01625 572495

Mob: 07880 665929

OAP's rates Tues. & Wed

Philip Dooley

Your Hi-Fi & Video Specialist

with

Expert Advice & Personal Assistance

106 Mill Street, Macclesfield

Tel. 01625 264666 or 423158



Phil's Chimney Sweep

- * Clean, Prompt, Reliable Service
- * Survey and estimate for sweep
- * Gutter Maintenance
- * Chimney Stacks - repointing, capping, unblocking & smoke testing
- * Birds and Wasps nests cleared
- * Pots Cows & Firesides fitted
- * Lucky Chimney Sweep for Bridal and other Celebrations

Over 20 years experience - Full insurance cover on all work

Tel/Fax: 01625 573529 Mobile: 07970 934126
www.cheshirechimneysweep.com e-mail: ps.com@virgin.net



Two Men in a Canoe . . .

... (totally off their trolley???)

Its not often that you see a 15ft. Canadian Canoe being towed along the Middlewood way by two disreputable looking Bollingtonians clad in full mountaineering waterproofs and rucksacks, especially on a rainy Saturday in October. If you did see us (for it was the Bollington Live! editor and his pal Richard Bower), there was a method in our madness and it shows the lengths some residents of our town will go to pursue their hobbies.

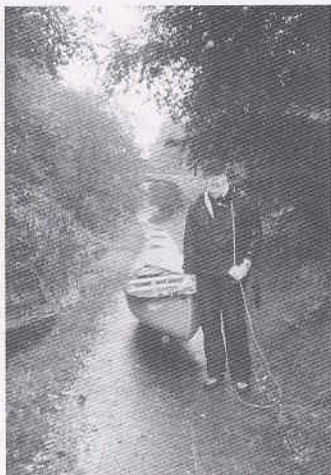
Richard and I spend considerable amounts of time and money in Bollington's pubs planning adventures that combine canoeing and climbing. Our past forays have included several wild camping expeditions, usually in Scotland, including one where we canoed all the way from Crainlarich to Perth along the River Tay.

Despite undertaking these schemes in the Autumn, we have often (not always) experienced some fabulous weather. Still days where we could see starfish and sea anemones twenty feet below the surface of a glassy sea loch. Breezy afternoons where the clouds whistled overhead and we could rig a sail on the canoe and surf for several miles to give our weary arms a well-needed rest.

We have had to abandon the idea of several inviting routes all because of the absence of water for a mile or

two. Like a seal the canoe is unwieldy and heavy out of the water and even short distances can be murder with it on our shoulders. One such route takes us along Loch Erich and into Loch Rannoch - there is a river between the two, but more of a mountain burn than a canoeists river. There is a forest track, however, and it's only about four miles long. But four miles might just as well be forty when you have a canoe, loads of gear, and only two pairs of hands.

This is where one needs a portage trolley, two wheels and a foldout frame to sit the stern of the canoe on, thus enabling the canoe to be lifted at the bow and pulled. Such devices can be bought, but are expensive. So Richard made one out of a couple of old golf trolley wheels and some aluminium tubing, but we had to give it a good test.



That's where the Middlewood Way **came in**. Much better to risk the failure of the device around our home stomping ground, than a days walking distance from any human habitation. We could also iron out any snags.



So off down to Adlington Rd. carpark. We carried the canoe to the Middlewood Way using the horse ramp alongside the viaduct and then strapped our canoe to the trolley. Would it work? Well yes, surprisingly well for a home made job.

Continued on page 14 ...

Corporate Sponsors of Bollington Live!

Bollington Live! gratefully acknowledges the support given by local sponsors, who have enabled publication to continue into our ninth year:

Kay-Metzeler Slater Harrison Linden Homes Northwest Ltd. Bailey Business Park Ltd.
Bailey International Steeplejack Co. Ltd. Bollington Town Council Ciba Specialty Chemicals
Bollington Civic Society Land & City Properties plc Tullis Russell Coaters The Adelphi Group

