



BOLLINGTON

Live!

Number Thirty Four

Summer 2005

INSIDE THIS ISSUE:

Politics and the Town Council?

Canalside Radio

VE Day Memories

Pub Reviews - part 1

Improved 'What's On'



HOLMES ~ NADEN

INDEPENDENT ESTATE AGENTS

A professional and personal service, from open market appraisal to completion of property sales

- ★ *Open 7 days a week*
- ★ *Free open market appraisal*
- ★ *Independent financial advice available*

Bollington Office: 78 Palmerston Street, Bollington, SK10 5PW

Telephone: 01625 560535

Prestbury Office: The Village, Prestbury SK10 4DS

Telephone: 01625 828254

Marie Ann
HAIRDRESSER

9 Grimshaw Lane, Bollington

Tel: 01625 572405

Mob: 07880 665929

OAP's rates Tues & Wed



**PRESTBURY
NURSERIES**

Quality Garden Plants and Sundries

London Road, Prestbury, Macclesfield, Cheshire SK10 4DY

Tel: 01625 828748



KELICO
interiors

Kellico Furniture

Lounge & Dining Furniture
in both classic and contemporary styles
also lighting, mirrors, rugs & artwork

Upholstery Designers & Manufacturers
Re-upholstery and Restoration Specialists

Visit our unique showrooms

Canalside, Clarence Mill, Clarence Rd., Bollington

01625 560434

10% discount with Bollington Loyalty Card



For the finest range of bread, savouries,
confectionery and sandwiches in town
- look no further than 116-118 Wellington Road.

Pass through our doorway and we promise you'll find
enough to satisfy even the most jaded palate!

116/118 WELLINGTON ROAD, BOLLINGTON

PHONE: (01625) 571100



Phil's Chimney Sweep

- * Clean, Prompt, Reliable Service
- * Survey and estimate for sweep
- * Gutter Maintenance
- * Chimney Stacks - repointing, capping, unblocking & smoke testing
- * Birds and Wasps nests cleared
- * Pots Cows & Firesides fitted
- * Lucky Chimney Sweep for Bridal and other Celebrations

Over 20 years experience - Full insurance cover on all work

Tel/Fax: 01625 573529 Mobile: 07970 934126

www.cheshirechimneysweep.com e-mail: ps.com@virgin.net

WEST BOLLINGTON POST OFFICE

on Wellington Road - your local car tax office

Superb Greetings Cards & Stationery

Toys & Gifts for all occasions

Children's Books & Local Maps

Major Stores' Gift Tokens

*Dry Cleaning * Cash's Name Tapes*

65 Wellington Road Bollington Macclesfield SK10 5HT

Tel: 01625 572378

Visit the Alnwick Tree House, Northumberland...

...and stay at the luxurious Castle View B & B, with beautiful en-suite rooms,
TV / DVD, tea / coffee making, CH etc.

Only 5 minutes walk from the famous Alnwick Garden
and its acclaimed Tree House

Contact Joan Taylor (who grew up in Bollington)

on 01665 606227

or visit: www.castleviewalnwick.co.uk



The Most Thorough Clean You've Ever Seen or it's FREE! You have my 100% Guarantee

That's right! If you're not 100% absolutely delighted with my
carpet and upholstery cleaning, I'll re-clean for FREE!
Still unhappy? Then I'll refund your money 100%



Call **HEALTHY HOME!** 01625 562 029



Canal Boat "Otter" - Seats 12

Eight hours for £60
or £70 at weekends

Book your passage on

01625-575811



Starts at Bollington Wharf, Grimshaw Lane

EAST CHESHIRE properties

For Landlords who require....

- Unrivalled personal service
- Full range of services
- Reliable Advice
- Competitive Fees & NO VAT
- Dependable Tenants
- A Firm that ONLY lets & manages RESIDENTIAL PROPERTY

We provide the answers.
We aim to serve & delight our clients

Residential Letting
and Property Management

For Tenants who seek....

- The BEST PROPERTIES in Bollington & Macclesfield
- Professional help & advice
- Value for Money

phone lines open from
9am to 9pm, 7 days

Tel: 01625 576287 Fax: 01625 576976

Bollington Live! is published three times a year on a non-profitmaking basis, with free distribution to households in the town. Under the editorial banner of "Bollington Live! - A voice for everyone" we aim to promote local concerns. Contributions are welcome to:

The Editor, c/o Bollington Printshop, The Old Stables, Queen St., Bollington SK10 5PS

Bollington Live! is published by Bollington Arts Centre & Bollington Civic Society, Wellington Road, Bollington, Cheshire SK10 5JL. Registered Charity No. 515096

Cover: 2005 Festival picnic on the rec - Bank Holiday Monday

Editor..... Tim Neale (01625 576397)
e-mail: bollylive@oldbro.org

Editorial Team..... (Graham Barrow), Ros Barton
Anthony Holland, John Liley
Suzanne Newton, Simon Nottage
Andy Skelhorn

Advertising..... Dennis Caulfield (01625 572538)
Mark Stedman (01625 575227)

Distribution..... Ken Edwards (01625 571126)

Printed by..... Bollington Printshop (01625 574828)

Cartoons by..... Matthew Wray

So the Festival is over ... Now what?

The big top has been packed away and the excitement of the festival is now a fading memory. Fantastic concerts, parades, fireworks and fascinating fringe events such as the 'post-a-poem' and internet novel, even our own radio station, every one will have their own favourite. A massive thanks to all who created the best Bollington Festival - so far!

So is that it for another few years? Lets hope not. All the past festivals, since the first in 1964, have left a legacy in the form organisations like The Brass Band, The Festival Choir and Players and the Arts Group, to name a few. What it will be this time, only time will tell; perhaps the Canalside Radio, which features on page 6 of this issue.

The Festival (and **Bollington Live!**) were, (at least partially), the ideas of Dr. John Coope and I know that many of us would like to express our thanks to him for the inspiration and encouragement that have kept the Festival tradition going for over 40 years.



The last issue was something of a departure for this magazine; with full colour and a different look and feel. This edition brings us back to 'business as usual' with our usual blend of articles on local history, personalities and community.

We had such a backlog of material held over because of the need to promote the festival in the previous issue that we have added four extra editorial pages, my children have been sent out cleaning chimneys (watch out Phil The Sweep!) to cover the costs.

If you like (or don't like) anything in the magazine, tell us, by letter, email or a quiet word in the pub. We are always looking for new contributors for factual or creative features, poems, stories or even recipes.

The next issue will be in November, so try and get any contributions or events listings to us by mid October at the latest
Ed

PLEASE HELP!

We need your BEST Festival Photographs, Memories, Stories and Anecdotes

Our aim is to capture the spirit of this year's Festival, in a commemorative book for everyone to treasure

Please let us have your Anecdotes, Stories and, of course, Photographs

By hand:

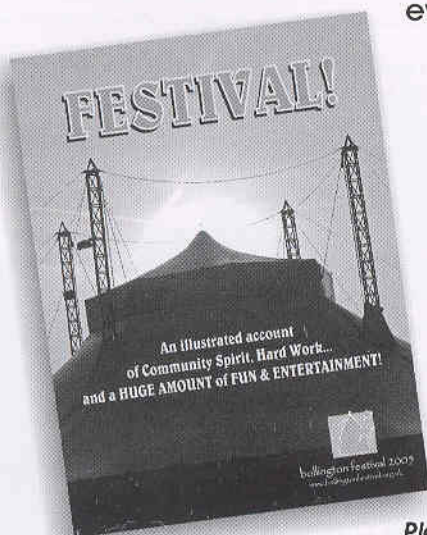
Bollington Printshop
off Pool Bank Car Park
Palmerston Street

By post:

Bollington Printshop
The Old Stables
Queen Street
Bollington SK10 5PS

By e-mail:

sales@bollingtonprintshop.co.uk



Please help us preserve the Characters, Friendships, Events and Stories of this year's Festival for generations of Bollingtonians to enjoy

Any profits from the sale of this book will be donated to the next Bollington Festival

Please note: your submissions must be clearly marked with your name and address. Include details of people or events in photos where appropriate.

Items submitted can only be returned after publication, by collecting them, in person, from Bollington Printshop. For further information, please telephone 01625 574828.

WHAT PLACE FOR POLITICS IN OUR TOWN COUNCIL?

Bollington Live! is now eleven years old and I have been writing articles for the magazine since the very first edition, mostly about my interests of planning, heritage and community development. When we launched the magazine one of our objectives was to raise interest in Bollington Town

Council, to stimulate reaction to new ideas and even to be a bit provocative at times! I have now decided to stand aside and let others take over, so this will be my last contribution for a while.

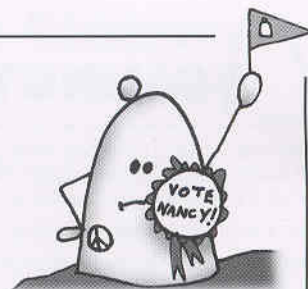
Increasingly, I have come to the conclusion that the party political labels carried by most of our town councillors may be getting in the way of productive action and the time has come for the town council to drop all party labels at forthcoming elections.

Bollington Town Council is primarily a parish council, established in 1974 when local government was reorganised. The previous Urban District Council had become party politicised many years before, but when most powers were transferred to the new Macclesfield Borough Council the tradition of standing for our new local council with a party political label persisted.

Many parish councils in England have no party political labels and councillors work together for the benefit of their parish. In Bollington the number of councillors has been reduced, partly may I suggest, because of the difficulty of getting people to come forward. People are put off by the party political nature of the town council and do not wish to be publicly associated with any political party. They hear about the rows between party groupings and think "I don't want to be associated with that".



*The Town Hall
during war weapons week 1941*



I'm not suggesting that party politics has no part to play in local government, but surely not at local town and parish level? Macclesfield Borough and Cheshire County Council will continue to operate on party political lines and Bollington can elect its three borough councillors with their party political labels.

The issues that Bollington Town Council can influence and its relationship to Macclesfield borough and Cheshire county councils will be helped by an a-political council working together for the good of the town. Our council could help candidates to stand for election by giving a small grant to candidates to help pay for their campaign publicity and the political parties could concentrate on funding Borough, County and National election activity.

So my parting request through *Bollington Live!* is for the Bollington Town Council to officially debate the dropping of party political labels from the next local election onwards. This would be a fitting accompaniment to an application for the new "Quality Parish" status and the taking on of more powers and responsibilities. The town council has a very

important role to play in our community, so let's keep national party politics out of it!

GB



Discovering the centre!

The new Discovery Centre has opened at Clarence Mill to widespread acclaim and is being enjoyed by very many Bollingtonians who are fascinated by the history and heritage on show.

The high spot is the Civic Society's collection of thousands of pictures of the town and its people. These can be viewed for the first time on computers now that the pictures have been 'digitised' thanks to grants from the Heritage Lottery Fund, Cheshire Rural Recovery, Macclesfield Borough Council, and Bollington Town Council.

Several books and maps are available for sale including Jean Wright's 'Voices from the Past' and a reprint of 'Bollington Through the Centuries' written by Rev R Norton Betts in the early 1930s - a delightful read. The

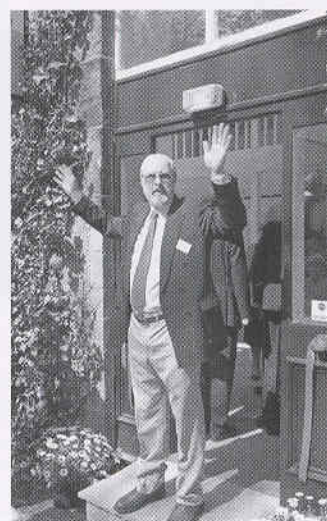
old favourite 'Looking Back at Bollington' has also been re-published. The 1907 OS map of Bollington has just become available together with a new 'Mountain Bike Map & Routes' of the local area.

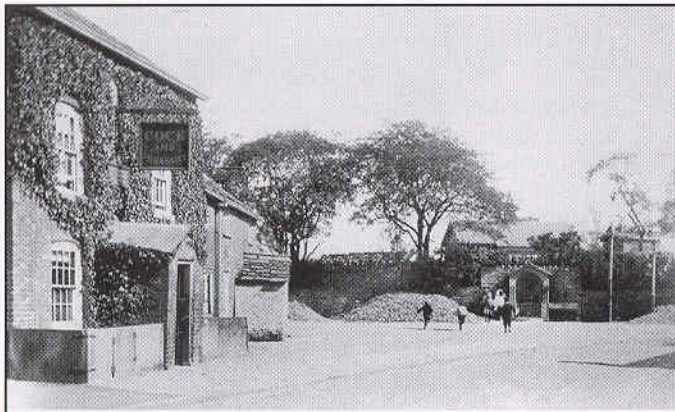
The Discovery Centre is open every Saturday and Sunday, 11am to 4pm and in the school summer holidays on Wednesdays 2 to 4pm.

School groups are welcome by arrangement any time to fit in with the school timetable. Call 01625-574888 or check the website www.happy-valley.org.uk/discover

Tim Boddington

Tim Boddington welcoming everyone at the recent opening ceremony

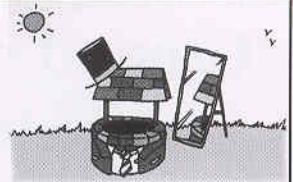




Well Dressing

Saturday July 23rd. 2005

Thousands of people visited Bollington for the wonderful festival and we want to keep those visitors coming. The Discovery Centre is one important attraction and now the Town Council wants to develop an annual Well Dressing Ceremony to keep the community spirit buzzing.



Bollington Art Group -

The Beginning...

From the first Bollington Festival in 1964 some 27 local societies are said to have been formed. One of them was the Art Group, which today has 77 members. Life Member Binkie Renton, of the original founding group, describes how it all began.

In 1955, Mr and Mrs Liley bought our house in Adlington Road. Doris Liley had trained at the Royal College of Art in London, as had her husband William, who was head of an art college in Ashton-under-Lyne.

I too had trained at Liverpool College of Art, and with this interest in common, Doris and I went to life classes in Macclesfield.

News spreads quickly in Bollington! Soon we met others who were interested, so Doris suggested we got together, to paint as a group. This we did either at her home, or my own in Bollington Cross, mostly doing portraits or still life, while Mr Burrows of The Mount, who was a water-colourist, gave us the use of his large summer-house, from which we could paint his lovely garden.

There were now eight of us: Elaine Mosley, Dorothy Hopkins, Winifred Johnson, Lisa Bysh, Amy Burgess, Jean Coope, Doris and myself, and when, in 1964, Dr John Coope was planning the first Bollington Festival he asked if we could hold an exhibition, 'Bollington On View'

As locally we were still thin on the ground, non-residents were also invited to participate, provided their paintings were of local scenes.

The exhibition itself was held in the Welfare Centre (between clinics!),

creating great interest with many further applications to join. From this point the properly constituted Art Group can be said to have developed.

We painted at Water Street and St. John's schools, and the mill canteen at Pool Bank, before coming to rest in the Civic Hall, with tutors from Macclesfield College, Ian Price and Graham Bolshaw, providing great stimulus and encouragement.

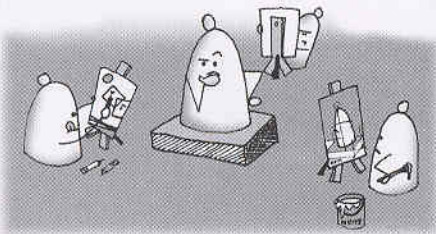
By the time of the next Festival, Mary and Keith Godwin had joined, Mary to become Secretary, then Chairman. Sketching weekends followed at Whitby and in the Lake District, together with our house meetings to which we brought along our work for discussion.

We owe so much to Doris, without whom none of this would have

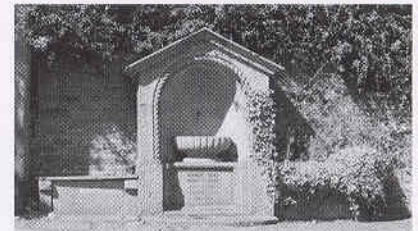
happened, and I am sure the Art Group has encouraged a great deal of creative talent and given pleasure to many people."

The present Art Group meets on Mondays in the Civic Hall, Palmerston Street at 7.45 pm and at the Arts Centre in Wellington Road at 1.30pm on Wednesdays, under the Chairmanship of Ruth Hemp. For membership, the secretary, Graham Ritchie, can be contacted on 820685.

JL



Well dressing is probably descended from the Roman habit of decorating wells and springs. It has persisted as a tradition in the Peak District and there are a group of dedicated people in Bollington who feel we are much more *peak* than *plain* and can emphasize our distinctiveness by adapting this old custom to our own local history.



For the first event the beautiful Greg Fountain opposite the Cock & Pheasant Inn has been chosen. It was installed in memory of the Greg family who lived at Mount Hall and owned Lowerhouse Mill in the 19th century and has been dry for years, but who knows, perhaps it can flow again when a group of volunteers decorate the Fountain in July.

If you would like to join in this activity on the three days preceding the Well Dressing Ceremony on July 23rd. contact Janet Beech on 01625 574618 This is when the flowers, seeds and pebbles are laid into the design on the boards and when extra creative hands are needed!

This venture is supported by the Town Council and the Drop In Centre; who hope you will come along at midday on 23rd. July for the opening ceremony and to admire the first ever Bollington Well Dressing.

The Greg Memorial and the Cock & Pheasant Inn (above left) in 1910- note the early roadworks! and the memorial today (above)

'Ground control to Major Tom...'

These were the first words to cross the airwaves when Nick Wright let me loose for two hours each Saturday night on Canalside Community Radio to present a show to Bollington and beyond from their state-of-the-art studios in Clarence Mill.

To say that the station has been a resounding success would be an understatement, but a success is something that Nick and his team knew it would be, after all it had taken over twelve months of hard work behind the scenes, before culminating in the month long broadcast in conjunction with Bollington Festival throughout May.

... 'Commencing countdown, engines on...'

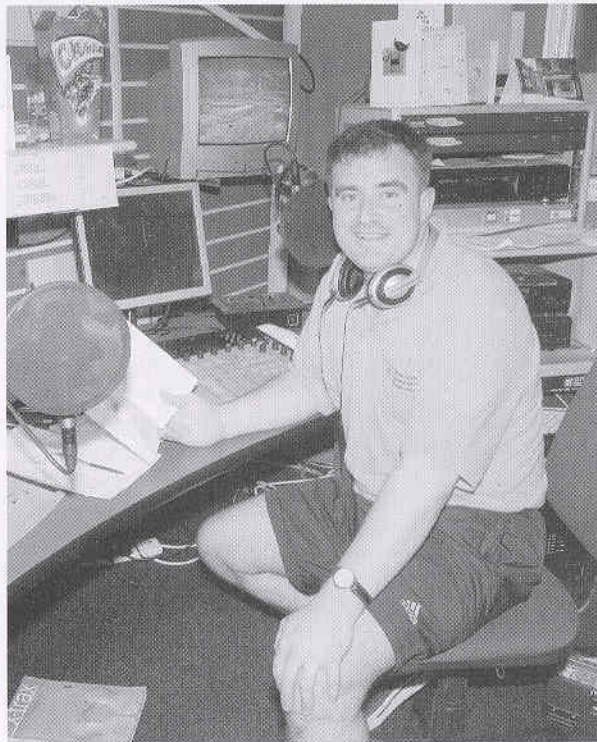
Nick who has lived in Bollington all his life explained that his idea for a community radio station came about when he was 'removed' from Silk FM in Macclesfield for 'allegedly' being too local. He said "I knew there was a place for a real community radio station in and around Bollington, and with a group of like minded people, we set off to turn these ideas into a reality."

Nick's passion for this station is palpable. He lives and breathes community radio. His vision was to enable all the community to be brought together and to benefit from the publicity opportunities available. A key aspect was the station's openness; Nick wanted to make the station accessible to all. During the broadcast, people of all ages and interests were given the opportunity to take part, either in the office, as a guest or even presenting a show.

Nick says "Favourite parts of the broadcast according to Joe Public have been 'Pensioners Paradise', 'Kiddies Drive-time', and the huge variety of music, whereby a top 40 hit could be followed by Frank Sinatra followed by a local band and then some Punk! Who knows! We basically have catered for everyone, young, middle aged and elderly. The kids from Tytherington High School and Macclesfield College who have done our news reports have also been great."

'This is Ground Control to Major Tom; you've really made the grade...'

But what is the future for the station? Nick and his team have applied for a full licence, but he explained that the station still needs everyone's support, with letters to build the case to OFCOM, the radio licensing authority. It is also an expensive process as Chris Heathcote and Eddie Walmsley, two of the station's trustees explained. "There is still a funding issue, with only half of the project paid for at this stage. Any kind of donation, be it an individual donation of £5.00, or a business donation of



£500.00 would help enormously at this particular time. Nick added, "Once the kit is paid for, it is onwards and upwards!"

It is also hoped that the strange bird that he was fond of riding around the town will be let out again for some fresh air. Clarence, a strange cross-breed of orange emu (or is it Nick that's the strange one?) should



be out and about for promotional events, and hopefully will be seen more frequently as the station mascot once the station gets a full licence.

'Ground Control to Major Tom, Your circuit's dead, there's something wrong.'

So for now the station is temporarily 'off-air', but the volunteers who manned the office and presented the shows are sure that Canalside Community Radio will soon be broadcasting again from the Clarence Mill studios. Under the terms of the current licence there is a possibility of a further 28 day broadcast, but everyone's ears and eyes are set firmly on the main prize of a permanent licence. Everyone at Bollington Live! wishes them success, and looks forward to a radio friendly future for Bollington.

AH

'Can you hear me Major Tom?' ... 'Can you hear me Major Tom?'

Send your letters
of support to:
Canalside
Community
Radio, Unit 2B,
Clarence Mill,
Bollington.



"Voices From the Past"

Jean Wright's tape recordings of Martha Ann Wright's memories of Victorian Bollington, together with her silk wedding dress were displayed at the first Bollington festival in 1964. They have now become the inspiration for Jean's new book.

'Grandma Wright' not only had many vivid recollections stretching back over 100 years but had saved a vast collection of artefacts and family letters. Martha Ann's mother had been a ladies maid to Agnes Greg, the sister of Samuel Greg who owned Lowerhouse Mill (now Slater Harrison). When Jean's family inherited this remarkable archive in the 1970s she started the process of documenting the presenting the material so that it could be preserved and benefit the local people and historians.

Her new book is packed with letters, photographs and pictures together with much background information. It provides insights into social history with the stories of life as a domestic servant in the 1860s, local history of Bollington and the personal story of a very close and devoted family.

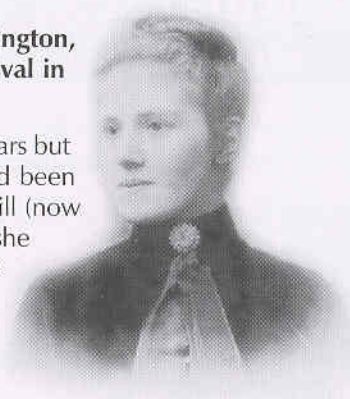
Jean told me that to have the letters existing at all is very unusual. Most working people were semi-illiterate in the 1800s and even if they did write the letters rarely survive. The letters have all been transcribed for the book but there are some images of the originals.

Although Jean has always been interested in history she had no idea of how to publish a book, especially when one is the writer, editor, and publisher. Jean is also no computer expert. She says it was only achieved because of the help of a small army of enthusiasts who helped with various crucial tasks like scanning photographs and transcribing the letters and ancient recipes for Cold cream and Ox Cheek Soup.

If you are interested in Bollington history then this book will delight you. It also may inspire others to start to collect together the strands of their own family history.

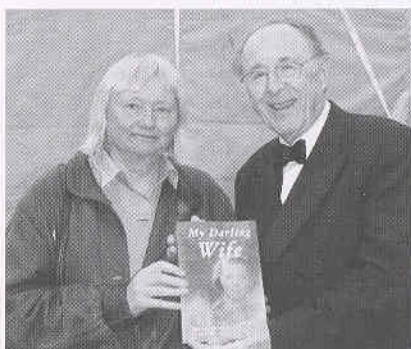
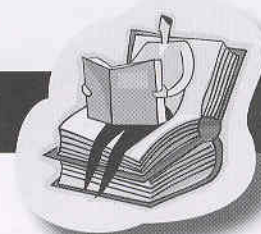
'Voices From The Past', £15.00. is available from the Drop In Centre, The Discovery Centre, the Library and other local shops, or you can call Jean on 01625 572118.

TN



Martha Ann - aged 21

BOLLINGTON BOOK REVIEW



"My Darling Wife"

Harry Berry was a music lover and jazz pianist, and so his daughter, Bollington resident, Linda West, thought it would be appropriate to ask Chris Barber to support Harry's posthumous wartime book during the Bollington festival. The book was rushed out for the festival and also to commemorate the 60 years anniversary of the end of WW2.

'My Darling Wife: The true wartime letters of Harry Berry to Gwen 1940-1945' is a collection of Harry's letters and secret diaries written while held in a Japanese prisoner of war camp.

The book is an account, in the form of letters and diary notes, of one young man's experience of World War II from the day he was called up to the day he returned home five years later. The letters to his wife, Gwen, are matter-of-fact, at times almost naive, but often with a touch of humour.

Professionally a journalist, Harry played in a dance band before the war. He was dragged off to fight in 1940, 3 months after his marriage to Gwen. Caught up in the fall of Singapore in 1942, Harry was a Prisoner of War for 3 1/2 terrible years, but he still managed to write songs and music for camp shows that helped keep up the men's spirits. Many were not to survive, but Harry was one of the lucky ones who got back and lived to the age of 87.

After Harry died last year Linda West rediscovered his notes and was able to get his book published. She also discovered that he had recorded himself playing his wartime compositions at home in his 70s. Linda told the story to BBC Radio 4's Home Truths last November and you can still hear this by linking into www.HarryandGwenBerry.org, if you have Internet access.

Linda has also published a "sister" book covering the same period, by Harry's wartime mate Derek Clarke. Derek was an artist with a graphic eye for detail. 'No Cooks Tour' contains 24 of his previously unpublished sketches.

Both books are published by www.Authoronline.co.uk and can be bought at the Bollington Drop-In Centre or at Bollington Library at £14.95 each. A CD of the original songs written while Harry Berry was a POW can be bought for £5. LW

Palmerston Travel

Independent Travel Agents

- Choose from a wide selection of Major and Specialist Tour Operators
- Many brochures not available in multiple agencies
- Business Travel
- Specialists in tailor-made arrangements
- Discounted Worldwide Air Tickets

We are here to help you to make an informed choice in respect of your Travel Arrangements

**REAL CHOICE - REAL VALUE
REAL PEOPLE**



Fully ABTA bonded



Palmerston Travel

15 High Street, Bollington, Macclesfield, Cheshire SK10 5PH

Tel. 01625 574448 Fax. 01625 575926

BOLLINGTON Veterinary CENTRE

**24 HOUR
SERVICE**

Consultations by appointment

Mon: 9-10am 2-3pm 4.30-7pm Thurs: 9-10am 2-3pm 4.30-7pm
Tues: 9-10am 2-3pm 4.30-6.30pm Fri: 9-10am 2-3pm 4.30-6.30pm
Wed: 9-10am 2-3pm 4.30-6.30pm Sat: 9-12.30pm

Middlewood House, Grimshaw Lane, Bollington, Cheshire SK10 5JB

Tel: 01625 572999



BOLLINGTON LEISURE CENTRE



FULLY EQUIPPED GYM & FITNESS CENTRE
20M SWIMMING POOL

SWIMMING LESSONS FOR 3 YEAR OLDS TO ADULTS
HEALTH CENTRE WITH SAUNA AND HIGH PRESSURE SUNBED
BEAUTY TREATMENTS, MASSAGE, REFLEXOLOGY & CHIROPODY
AEROBICS AND OTHER FITNESS CLASSES
2 HIGH QUALITY, COMPETITION SQUASH COURTS
CHILDRENS SOFTCENTRE
FULLY LICENSED BAR AND FUNCTION ROOMS



THORNEYCROFT INDEPENDENT ESTATE & LETTING AGENTS

Thorneycroft Estate & Letting Agents offer an unbeatable service to its clients, whether selling or letting! With local coverage in both Bollington and Holmes Chapel, we can offer a unique service, combining the sale and your conveyance within one company!

We have a range of attractive offers, and have helpful, knowledgeable staff on hand 7 DAYS A WEEK!

DON'T HESITATE - CALL US TODAY.

45 Palmerston Street, Bollington
Cheshire SK10 5PX
Tel: 01625 562811

16 The Square, London Road
Holmes Chapel CW4 7AB
Tel: 01477 533111



THE WASHING WELL SERVICED LAUNDERETTE

Open 7 Days per week for SERVICE WASHING/DRYING anything

Either wash them yourself OR leave them with us for our expert staff to wash them for you.

Separate facilities for: Horse Blankets / Pet Bedding / Duvets, Ironing Service

Come to the Washing Well for: Dry Cleaning (including Curtains and Wedding Dresses), Shoe Repairs, Shirt Service, Repairs & Alterations

FREE COLLECTION & DELIVERY available for large loads or for elderly / disabled.

84 Palmerston Street, Bollington Tel. 01625 572526

Bollington CHRISTIAN LIFE CHURCH Services every Sunday at 11am

From weekly Youth and Childrens' Clubs, through to The Alpha Course, there is something for everyone at the Christian Life Church.

www.bollington.org.uk

Christian life Church . Hawthorn road . Bollington. 01625 578100 Find your purpose in life.



What now for the Wrecked Rec?

The sun shone, as from the Festival tent came the sound of hymns. In the background, the sounds of the brass. Such a depiction of village life has hardly been seen since the movies of J. Arthur Rank.

There were many such golden moments; but, after the Festival, there's a problem. The poor old football ground, for which the term long-suffering might have been invented, took such a pounding beneath the tent it will be unusable for months. And those who run Bollington Athletic FC, which has represented our town for 60 years, are understandably put out.

A substitute ground has been offered by the Borough. But, even if it is up to the standard demanded by the Mid-Cheshire league (and the first ground on offer is most decidedly not) - there is much extra hassle, a letdown for the town. It is a letdown, too, of course, for the players, and those who might be tempted to play. Let those of us who often reflect upon the need for facilities for youth, reflect now on this serious setback.

The frustration runs deep. As leaders of the club point out, when they visit other grounds - often in smaller and poorer communities - the facilities are so much better that the Recreation Ground in Bollington is, by comparison, an embarrassment.

Shouldn't it be better? Far, far better? The plea of course is lack of finance. But surely, a town such as Bollington, with 7,500 inhabitants, in one of the most prosperous areas in the country, should be able to provide a decent pitch for the most popular sport in the world?

Estimates for restoration of the football ground vary enormously. £20,000 has been spoken of; maybe, if the drainage is really sorted out, the final sum will be more. Can it be found? Surely it must be, to have a proper job done in those fallow months to come. Meanwhile, the Bollington team - if it is allowed to stay in the league at all, such has been the disquiet over the standard of the field, even before the latest debacle - will be playing its 'home' games somewhere else. Probably on the far side of Macc.

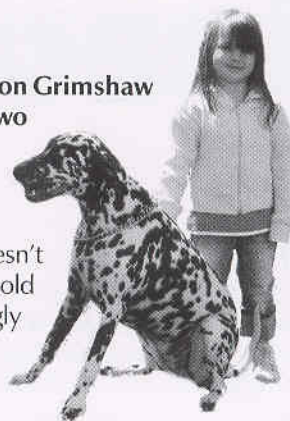
JL

Canine Capers

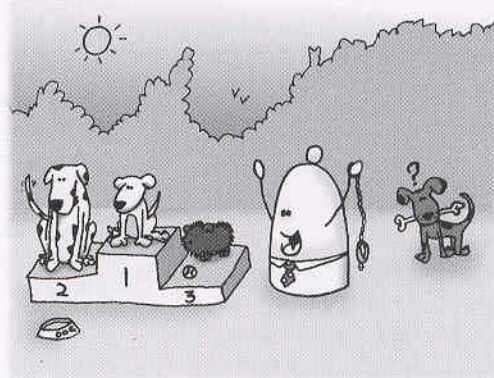
Festival Dog Show

Bollington Veterinary Centre on Grimshaw Lane has been open for over two years now. Nick Rushton and his staff are both helpful and knowledgeable.

My rug cross mutt Harry doesn't mind crossing the surgery threshold as the biscuit barrel is cunningly left at nose height. Even Jack (the Russell) receives an unaccustomed welcome, little angel that he is!



Having had our check ups we signed up and volunteered to help with the Dog Show (something I find myself increasingly doing - must practise the "No. I am busy").



Sunday dawned, a bit overcast, and Vet Nick and I headed off in-convo in search of agility equipment, returning to help the rest of his fantastic staff wrestle with jumps, poles, bunting, biscuits, PA systems, chew bones, squeaky toys, poo bags, water bowls and last but not least, highly visual and attractive (I need to get out more!) yellow jackets.

I zoomed home to collect three unsuspecting and slightly miffed-at-being-washed hounds and returned at to the Rec. confident that if we entered every category a rosette would adorn our fridge door for all to see. But alas, not so, the show ring bulged with every conceivable pooch; with honours going to Flaine Denton - the cutest puppy, Megan Alston - waggiest tail and so on until we had been defeated in every class.

The dogs were completely oblivious to it, I must say, and were completely chuffed with all the strokes from hundreds of doting dog owners.

The recreation ground was a sea of people, waggy tails, smiling children and howls of laughter as we discovered just how difficult a dog agility course is, I wasn't the only one to say it looks so easy on the telly!!

SN

Our pictures (left) taken at the end of June, show the deep ruts left by the heavy vehicles during the pitching and striking of the festival big top.





BOLLINGTON



JULY

Saturday 16th 1.30pm

Bollington Cricket First XI

Recreation Ground: Bollington v Grappenhall. Info. on 01625 573708

Sunday 17th 2.45pm

Kerridge War Memorial Service

Join ex servicemen, Bollington Brass Band as they march from Holy Trinity Church, Jackson Lane, Kerridge to the war memorial on Oak Lane. Details from 01625 572771

Sunday 17th 3 - 5pm

Strawberry Cream Tea at Savio House

Face Painting, Book and Cake Stalls and Raffle in aid of East Cheshire Hospice and Christies. Tickets £3 adults & £1.50 children. Tel. 01625 575406

Wednesday 20th 11am

1 Hour Walks

Drop In Centre: The Ranger Service lead a circular ramble. Refreshments on return. Tel. 01625 576311

Saturday 23rd 12 - 2pm

Well Dressing Opening Ceremony

Greg Fountain, (on Flash Lane, opposite the Cock & Pheasant Inn). See feature on page ?? Tel. 571126.

Saturday 23rd

Quiz night & Supper

Royal Oak pub: £1 per person entry.

Saturday 23rd 13.30

Bollington Cricket First XI Match

Recreation Ground: Bollington v Sale. More information 01625 573708

AUGUST

Friday 5th

Murder Mystery Night.

Hollin Hall: A dinner with death! £21.50 Tel 01625 573246

Wednesday 17th 11am

1 Hour Walks

Drop In Centre: The Rangers lead a circular ramble to historic points of interests. Refreshments on return. Tel: 01625 576311

Sunday 21st

Macclesfield Family Fun Day

Sunday 28th 1.30 - 3.30pm

SEPTEMBER

Friday 2nd

Murder Mystery Night

Hollin Hall: Four Course dinner & murder! £21.50 Tel 01625 573246

Saturday 3rd, 8pm

Jazz at the Arts Centre

Gambit Jazz men. Tickets £7.00 Tel 01625 574410

Thursday 8th, 7.30pm

Race Night

Drop-In Centre: Palmerston St. Tickets £5.00 which includes a Hot Pot Supper (yum!) Tel 01625 576311

Friday 9th

Bolly Comedy Club

Arts Centre, 8pm: The first of this season. (Over 18's only) £7.50 Tel. 560774

Soul & Motown Classics

Shrigley Hall Hotel: 7pm till late. Dinner and dance Tel. 01625 575757

Sunday 11th 7pm

Sunday Night Lectures

Arts Centre: Ranger Martin James and 'From Transport to Wildlife' a presentation about the Middlewood Way and the work of the Rangers. £3.00 on the door. Tel. 575287.

Sunday 11th 13.30

Bollington Sunday XI Cricket Match

Recreation Ground: Bollington v Pott Shrigley Information on 01625 573708

Weekends 17, 18, & 24, 25

Wednesdays 21, 28 & Oct.1, 2 - 5pm

Exhibition of Water Colour Paintings

Arts Centre: Paintings by Eric Holmes who can be contacted on 573120

Friday 16th

70's and 80's Night

Hollin Hall: Dinner and dance. Tel. 01625 573246 for details.

Sunday 18th, 11am - 4pm

Transport Extravaganza

Adelphi Mill, Grimshaw Lane: Cars, bikes, narrow boats. and assorted other stalls and live music.

Car Boot Sale

Drop-In Centre 11 - 1pm. Tel. 01625 576311

Sunday 18th, 1.30pm

Bollington Sunday XII Cricket Match

Recreation Ground: Bollington v Zeneca. Information: 01625 573708

Wednesday 21st, 11am

1 Hour Walks

Drop In Centre: Ranger Service lead a circular ramble. Refreshments on return. Tel. 01625 576311

Saturday 24th, 8pm

Kungsbacka Piano Trio

Arts Centre: Bollington Chamber Concerts present this brilliant young ensemble playing trio's by Beethoven, Faure and Rachmaninov. Tickets £10, £5 (children and concs.) 560355 or 575287 (sponsored by Astra Zeneca)

Sunday 25th, 12 - 4.30pm

Bridal Fayre

Shrigley Hall Hotel Tel 01625 575757

Sunday Night Lectures

Arts Centre 7pm: Ken & Yvonne Singer talk about the Windows for Peace Charity, which works to bring reconciliation land between young Israelis and Palestinians. Free, but all donations welcome. Tel. 575287.

Monday 26th, 2pm

Monday Afternoon Bingo

Drop In Centre: First autumn session. Tel. 01625 576311 for details.

Friday 30th, 8pm

'Wheel Of Fortune'

Arts Centre: The Mikron Theatre Company present a play about the Falkirk Wheel. Tickets: £7 & £5 call 574687

OCTOBER

Saturday 1st, 8pm

Jazz at the Arts Centre

Yorkshire Stompers. Tickets: £7.00 Tel. 01625 574410

Friday 7th 8pm

Bolly Comedy Club

Arts Centre: More laughter to end the week with. Over 18's only. £7.50 Tel. 01625 560774

Friday, 14th. 7.30pm

Bridge Drive and Finger Buffet

Arts Centre: In aid of Boll. NSPCC £5 inc. Refreshments, Raffle. Tel: 574124

Dates for your Diary

Wednesday 19th 11am

1 Hour Walks

Drop In Centre: The Ranger Service lead a circular ramble. Refreshments on return. Tel 01625 576311

Monday 17th - Sunday 13th November,
Brushes With Wildlife

Arts Centre: Local artists and photographers of all ages exhibit their entries to a competition organized by local RSPB. Closing date Sept 30th, Contact David Tolliday on 432105.

19th to the 22nd

'Stepping Out'

Arts Centre: Bollington Festival Players
Call 01625 875326 for full details.

Friday 28th

Halloween Murder Mystery

Shrigley Hall Hotel: Dinner, death and disco! Tel 01625 575757 for details.

Saturday 29th

R.S.P.B Day at the Arts Centre

2-4pm Feed the Birds, a free activity afternoon for all the family.

7.30 pm A programme of renowned films from the R.S.P.B. Tickets £5.00 from 01625 574410

Sunday 30th, 10 am to 1pm

Explore the Harrop Valley

Ranger's Office Adlington Road: 5-6 mile guided walk. Details from 573998

'Screen Fever'

Arts Centre: 7pm A celebration of the cinema in poems by John Lindley, 2004 Cheshire Poet Laureate. Tickets £4.00 (pay at door) Tel 01625 575287

NOVEMBER

Friday 4th 8pm

Bolly Comedy Club

Arts Centre: The best in stand up. (Over 18's only.) £7.50 Tel. 01625 560774

Sunday 6th 7pm

Sunday Night Lectures

Arts Centre: Robin Hidden discusses how Monet and the impressionists broke the mould of European painting, opening the door to modern art. Tickets £3.00 (pay at the door) More details from 01625 575287

Thursday 10th - Friday 18th, 7-9pm, & Sundays till 28th December 2 - 4pm

Northern Scapes by Jessica Owen

Arts Centre: An exhibition of multimedia paintings of the Peak District. Call 07796 368986 for details.

Thursday 10th

"From Adversity to Victory"

Drop-In Centre: Exhibition to mark World War II. Tel 01625 576311

1940's Theme night

Drop-In Centre: Period dress if you can, includes bar, authentic food, music and dancing. Tickets £6.00, Tel 01625 576311

Saturday 12th, 8pm

Jazz at the Arts Centre

Dave Mott Classics. Tickets £7.00 Tel 01625 574410

Sunday 13th, 10.15am

Remembrance Day Parade

Bollington Brass Band lead the Town Mayor, Councillors, ex-service people, and other org's. from the Town Hall to the Memorial Gardens for a short service and the two-minutes silence at 11am. Details from Town Hall 572985.

Wednesday 16th, 11am

1 Hour Walks

Drop In Centre: The Ranger Service lead this Circular ramble. Refreshments on return. Tel 01625 576311

Friday 25th, 8pm

What Shall We do With the Turkey?

Arts Centre: Bruce Kendrick, from Liberty Wines, presents a dozen wine ideas for the festive season. Tickets £5.00. Tel 01625 575287

Saturday 26th, 8pm

Bollington Chamber Concerts

Arts Centre: Northern Baroque perform works by Telemann, Handel, Vivaldi and Hotteterre Le Grand, on violin, oboe, recorder, cello and harpsichord. Tickets £10, £5 (children and concs.) 560355 or 575287

Sunday 27th, 7pm

Sunday Night Lectures

Arts Centre: An illustrated talk by Kim Creasey looking at the flora of South Africa and the magnificent Southern Right Whales. Tickets: £3.00 (pay at the door) 01625 575287.

To publicise forthcoming events in our 'whats-on' section, contact
Suzanne Newton
on 01625 574996



A Music Theatre for Young People

Bollington Festival Music Theatre is a unique group for 8-14s who enjoy singing and acting. We meet on Sunday afternoons in the Arts Centre to rehearse and perform musical shows. There are always solo roles and plenty for the chorus. New members are made very welcome and there are no auditions to join. Next season is the twentieth year of the Music Theatre and rehearsals start on September 4th at 2.30pm for an intriguing show called "A Brief History of CHRISTMAS. This will be performed on December 4th.

As well as unusual versions of Adam and Eve, Gabriel's Message and Jesus' Birth, the show introduces us to the Mince Pie Baby and stars Queen Victoria in the story of Britain's first ever Christmas Tree. In the final scene, set in the future, people have become greedy and selfish, but a surprise visitor restores the true meaning of Christmas. For further details, ring Donald Judge on 0161 427 2870 or visit our website: www.bcmt.url4life.com



Hollin Hall

Jackson Lane, Kerridge
Nr. Bollington, Cheshire SK10 5BG
Tel: 01625 573246 Fax: 01625 574791

Friday August 5th
Murder Mystery Night
4 Course Dinner & Murder! - £21.50

Friday September 2nd
Murder Mystery Night
4 Course Dinner & Murder! - £21.50

Friday September 16th
70's & 80's Night
4 Course Dinner & Dancing - £16.95

Bookings now being
taken for CHRISTMAS
Ring for details/availability

Lunches Served Every Sunday 12.00 - 2.00pm

£12.95 per person for a 3 Course traditional Sunday Lunch

Dinner Served every Monday - Saturday evening

from 7.00pm to 9.30pm in the fabulous Orangery restaurant

To make a reservation or for further details, please contact us on 01625 573246



J.J.J. HEATHCOTE LTD.

From our own LOCAL FARMS
for Beef Pork & Lamb

Palmerston Street, Bollington: 572202

114 Wellington Road: 573172 5 Fountain Place, Poynton: 872154



Adelphi mill

properties limited
Adelphi Mill Properties Limited
Adelphi Mill, Bollington
Cheshire SK10 5JB

The Adelphi Mill & Clarence Mills are situated alongside the Macclesfield Canal. The mills have been re-furbished and now house between them over 50 businesses.

The on-site facilities include large landscaped car parks, lifts, and coffee shops.

Space available to let, refurbished office suites, workshops and light industrial units

Tel: 01625 575125

E-mail: info@adelphimill.co.uk

Websites: www.adelphimill.co.uk or www.clarencemill.co.uk



Clarence mill

Clarence Mill Limited
Clarence Mill, Bollington
Cheshire SK10 5JZ

• WINDOWS • DOORS • FRENCH DOORS • CONSERVATORIES • REPAIRS •
FASCIA • SOFFITS • GUTTERS • PORCHES

BOLLIN VALLEY

WINDOWS & CONSERVATORIES

Quality Windows & Conservatories



- ✓ **FREE** design ✓ **FREE** estimates
- ✓ Everything made to measure
- ✓ High security ✓ Energy saving
- ✓ Care and attention to detail

CALL TODAY ON
01625 571177

• WINDOWS • DOORS • FRENCH DOORS • CONSERVATORIES • REPAIRS •
FASCIA • SOFFITS • GUTTERS • PORCHES

michael
HART
& COMPANY

CHARTERED SURVEYORS
LAND and ESTATE AGENTS
AUCTIONEERS and VALUERS

2 Henshall Road Bollington Cheshire SK10 5HX
telephone Bollington 01625 575578
fax Bollington 01625 576713
e-mail info@michael-hart.co.uk

FREE Pre-sale valuations & advice
Full property letting & management service
All types of surveys and valuations undertaken
Independent mortgage advice

www.michael-hart.co.uk

Also at: 36 Park Lane Poynton Cheshire SK12 1RE telephone 01625 876331

Fun fitness with Carla gilder

FUN FITNESS! NO JOINING FEE! NO MIRRORS!

BOXERCISE-CIRCUIT-TRAINING-BODY BLAST-60+ EXERCISE

SKIP STEP & CRUNCH- POSTNATAL-KIDS FITNESS 5-12YRS

Classes: 6 days a week At the Scout Hall Albert Road Bollington

New Luxury Gym for Personal Training

AFFORDABLE & EXCLUSIVE!

01625 576797 07753 170424

Chris Plant Dental Lab

DENTURE REPAIRS

2nd Floor, Adelphi mill, Grimshaw lane, Bollington

Tel. 01625 560881



10% DISCOUNT
with Bollington loyalty card

Designers & Manufacturers in all Woods & Finishes
Individual, Innovative & Inspirational Designs

IN STOCK NOW

New Oak ranges, Leather & Fabric Sofas
Sofa Beds and Mattresses

Tel: 01625 576362

Retail: 39 Palmerston Street, Bollington

Mfr. & Wholesale: Unit 20, The Old Brickworks, Pott Shrigley



WEEKLY (as a rule)

Monday

Crib night at the Queens Arms 8.30pm
Air Training Corps Water Street School 7.30 – 9.30pm
Cricket Practice nets 6.30pm Tel. 573708 (*Jnrs: Tue or Wed*)
Canoe Club Adelphi Mill canalside 7pm Tel 01925 756728
Boll. Cross Women's Institute Christian Life Centre, Hawthorn Rd. 7.30pm (*2nd Mon of each month*)
Sea Cadets TS Ardent. 7.15-9.30pm
Bowling Club Dog and Partridge Tel 01625 575413
Bollington Art Group Civic Hall 7.45pm Tel.820685
1st Boll. Cross Guides Methodist Church Hall 7-8.30pm
Bollington Brass Band Methodist Hall. (*Youth Practice: 7pm Senior Practice: 8pm*) Tel. Paul Berry 01298 816688

Tuesday

(Motor) Bike night at The New Con Club
Boll. Festival Choir rehearsals: Arts Ctr 8pm. 0161 427 2870
Youth Club Water Street School, 7.30-10pm
Boll. Senior Citizens' Soc. Club Community Centre 7.30pm
2nd Bollington Rainbows Methodist Church Hall 5-6pm
2nd Bollington Brownies Methodist Church Hall 6-7.15pm
2nd Bollington Beavers Scout Hut Albert Road 6.30pm
2nd Bollington Cubs Scout Hut Albert Rd 7pm
Senior Citizens Bingo Night Community Centre 7.30pm

Wednesday

Live Music Night - Highwayman Inn
Discovery Centre opens 2-4pm
(*during School Spring and Summer Hols only.*)
Boll. Festival Players Arts Centre 8pm Tel 01625 574085
Junior Festival Players 7-8.30pm Oct to Jan Tel 571028
Bollington Art Group Arts Centre 1.30 Tel 01625 820685
1st Bollington Rainbows Methodist Hall 4.30-5.30pm
1st Bollington St. John's Brownies Meth. Hall 6.30-7.45pm
Junior Sea Cadets TS ARDENT 7-9pm

Thursday

Bollington Brass Band Practice Methodist Hall. 8pm
Tel Paul Berry 01298 816688
Cricket Practice nets 6.30pm Tel 573708
Boll. Light Opera Group Arts Centre 8pm Tel 610983
Senior Sea Cadets, TS ARDENT 7.15-9.30pm
Quiz Night Spinners Inn (every other Thurs)
Bridge Club at the Arts Centre 2-4.30. Tel 575508
Youth Club Water Street School 7.30 – 10pm
1st Bollington Guides Methodist Hall 7.30-9pm
Quiz Night Cock and Pheasant 9.30pm

Friday

Quiz Night - Highwayman Inn (every other Fri)
Bridge Club Arts Centre 7-10pm Tel 575508
Air Training Corps Water Street School 7.30-9.30pm
Arthur Wakefield's Folk Club Dog and Partridge 8.30pm

Saturday

Discovery Centre 11-4pm Tel 574888

Sunday

Discovery Centre 11.00am-4.00pm Tel 574888
Quiz Night Queens Arms 8.15pm (*every other Sun*)
Boll Jnr Festival Players (formerly BCMT) Arts Centre, Rehearsals 2.30 pm. Tel 0161 427 2870

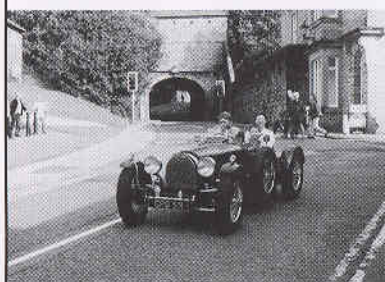
MONTHLY

Boll. Family History Club Arts Centre 10.30am – 12.30pm
(*1st Thursday of the Month*)
Contact Gill Houston 01625 872057
Boll. Flower Club, Community Centre 7.30pm
(*2nd Wed of the Month*)
Boll. Angling Society Wagon and Horses 8pm. Tel 573401
(*3rd Wed of Month*)
Quiz Night Poachers Inn (*First Sun. of the month*)

THE BOLLINGTON TRANSPORT EXTRAVAGANZA...

takes place at Adelphi Mill Car Park on Sunday 18th September from 11 am - 4 pm and is being organised by the Bollington Town Council Extravaganza Committee in conjunction with the Lions Club. All money raised will be going to charity.

There is something for everyone: a display of vintage, veteran and classic vehicles from by-gone days. Some interesting for their age (a 1916 Ford T Tourer), their luxury (Cadillacs and Rolls Royces) or star quality (a Morris Oxford from The Borrowers).



TOP GEAR! Water St. circa 1920
Can anyone identify the make of bike?

There are many side attractions: Live music, including local band "The New 2-10"; activities for children such as a circus school and mini-steam train rides; canal boat trips and stalls from local groups. Refreshments will also be available.

For information about exhibiting, running a stall or helping on the day, contact G. Cann, BTE05, Adelphi Mill, Grimshaw Lane, Bollington SK10 5JB Tel: (575576/574489), Cllr. D.Laffan (560336) or e-mail: general@transportextravaganza.info



Warren - Pleeth, 60 years on... *(Pun intended!)*

With the 60th anniversary of VE and VJ days in mind, I chatted to Harry Pleeth and Dick Warren about their wartime memories. Now in their 90s, both have contributed enormously to the community over many years. The war period was very important to both men but in rather different ways. The 6 wartime years are just a small part of both men's long lives and their reminiscences were not limited by the boundaries set by the conflict that ended 60 years ago.

In 1941, When Harry Pleeth and his friend Sid Hartley arrived in Bollington from London with a couple of van loads of equipment for the manufacture of aero-engine coils, it was something of a culture shock. Suddenly they were living in a world with few cars, the natives were friendly but their accents couldn't be understood and the countryside, which Harry loved, was out of the back door rather than an underground train ride, several busses and a long walk away.



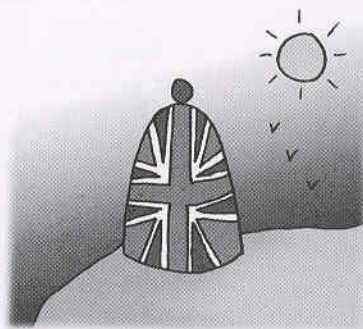
Harry Pleeth at a recent function

A bomb through the roof of the factory in north London had caused Harry's firm to look for alternative accommodation, which was found 200 miles away in part of Bollington's Lowerhouse Mill (now Slater Harrison). Harry was managing production and Sid was responsible for the machinery.

Harry, his wife Lydia and their baby moved into a house near the mill and settled down to Bollington Life. With not much money wartime entertainment consisted of local dances at the Conservative club, trips to the pictures in Macclesfield (bus out and walk back to save money) and taking advantage of the countryside.

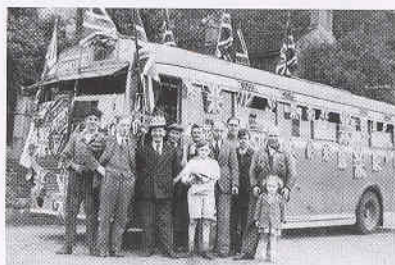
Even before they were married Harry and Lydia enjoyed long walks in the country. Harry speaks fondly of weekends spent near Leatherhead in Surrey, where they camped, swam and rambled for miles along the banks of the River Mole. Imagine

the pleasure of moving to a place where fields and hills were ones back garden.



Harry joined the Bollington Fire Brigade as a retained fireman and after a while was asked if he wanted to become leading fireman, he refused because he couldn't understand what the men were saying, and they couldn't understand him! They had special wartime exercises and training, which were often like an episode of 'Dads Army'.

When they war came to a close Harry and Sid had the chance to move back to London. Harry and Lydia put it to their (now 2) children John and Barbara who flatly refused. So they stayed. When son John became old enough to join the 2nd Bollington Scouts, who required a leader (as they do now!) Harry took on the role and this soon became one of his abiding passions. Some years ago he was awarded the Scout Associations Silver Acorn award for distinguished service. If this were not enough he was awarded the M.B.E. for his work with Macclesfield Chamber of Commerce.



Harry's wife Lydia and his daughter Barbara died some years ago, as has Sid Hartley, but Sid's wife Mary, who

was twice Bollington's Mayor, still lives locally.

When Harry arrived in Bollington Dick Warren was thousands of miles away; part of the British forces besieged in Malta by the Nazis. After joining the Royal Artillery in 1940 he spent time in Woolwich during the blitz before being shipped out to Malta, where he spent the next 3 ½ years. Dick had several near escapes and lost many good friends and still exclaims that he must be the luckiest man alive! The shortages of food and cigarettes are something he still remembers intensely.



Dick & Alice Warren, at home

The island of Malta was given the George Cross in 1942 to commemorate the island's collective bravery.

On return from Malta Dick spent two weeks leave in Bollington before a period in Sherwood Forest training new recruits and was on a ship bound for India in the Suez Canal when the news came through about the end of the war in Europe.

I asked Dick how he adapted to life back at home. He said that it was very difficult at first, Bollington seemed very quiet and young men returned from war with a different outlook and were not keen to slip back into the old hierarchies.

Continued overleaf...

Letters to the Editor

Dear Sir,

I would like, on behalf of all the residents of Bollington I am sure, to congratulate all concerned in the staging of the Festival for the proficiency, organisation and content of the festival; and what a closing ceremony.

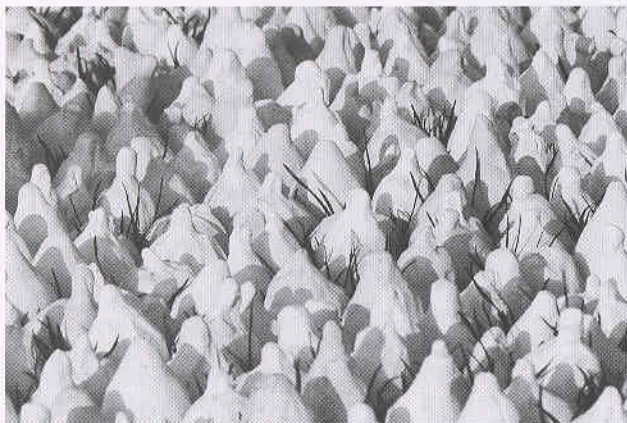
It would have been a credit to anywhere in the country. Once again BRAVO!

Yours Sincerely,

Alfred Jackson Arden

P.S The contribution of Canalside Radio, Nick Wright and team was magnificent; surely we cannot lose this local station.

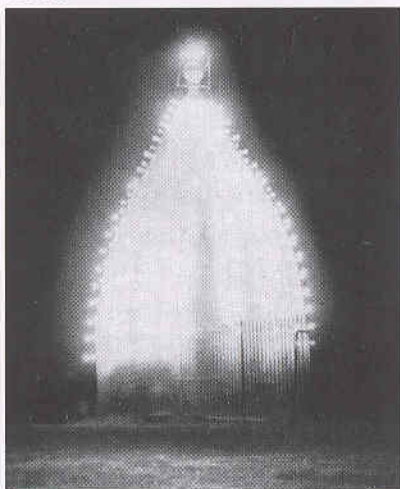
Alfred's opinion is shared my most, but not all, local people. Here's another letter (name withheld by request) that expresses a rather different viewpoint...Ed



This image shows a small selection of the White Nancy models created by our local schoolchildren as a festival art exhibit.

...continued from previous page

He returned to his old job as a dyer at Oakbank and said he'd "give it till Bollington Wakes". Fortunately for Bollington he decided to stick it out.



Politically committed, his work as a trade union representative led him

to become a Bollington Councillor and he was Mayor in 1991-2.

Dick's wife Alice moved from the North East to Bollington with her family as a teenager. They arrived in the early part of the war and lived at 4 Queen Street. Alice speaks of the friendliness of everyone and how kind people were. On VE day itself she says there were many street parties and everyone paraded up to White Nancy (where else?) to celebrate.

She was not to meet Dick, of course, until after he was demobbed and returned to Bollington. They were married in 1950 and have two sons Alistair and Richard (Jnr.)

Pictures: During the period just after VE and VJ days Mr Broadhead gave charabanc rides for local children and White Nancy was illuminated by hundreds of lightbulbs.

The Minority Speaks.

Reasons why I didn't go to the festival:-

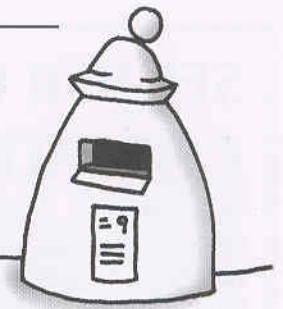
None of the events jumped out at me. I wasn't convinced that a band is "World Famous" just because they're from another country. If they were that famous, I'd have heard of them. Classical music is beautiful, but not in a big tent on a football pitch. My idea of comedy is a bit more, 'comical', and a walk around the village isn't too appealing as I do it every day.

I do appreciate that all these things and more are entertaining to a vast amount of you, just not me. But one of Bollington's main problems, the 'youth' and 'what's to be done with them' was highlighted by the selection of entertainment. There was plenty for the young and old to do, but not too much for my generation (16-24 by the way). Why?


So instead of complaining, here's a few suggestions for future events, be it two or five years time, things like an Indie/Rock night with established bands from Manchester or Liverpool which is surprisingly inexpensive to organise, a Dance night with local D.J.'s, would give a touch of the Edinburgh Fringe/Glastonbury feel to the festival.

Also, more sporting events that could involve everyone, like a five a side football competition, or a pool tournament.

The Festival was great, apparently. The atmosphere was amazing (or so I've been told, - as I said, I didn't "do" the Festival) It just didn't appeal to me, one of the minority.



THE VALE



Home Cooked Food
Real Ale

Adlington Road, Bollington
01625 575147

NOW OPEN

Co-operative  Funeralcare
Your Local Funeral Director
National Association of Funeral Directors

25 High Street
Macclesfield 01625 422583

Caring & professional staff

- Memorial masonry
- 24 hour service
- Pre-payment plans available

www.funeralcare.co-op.co.uk

SENIOR CITIZENS' COMMITTEE

The Bollington Senior Citizens' Committee was the brain-child of Councillor Arthur Kirkman and came into being during his term as Chairman of Bollington Urban District Council for 1957-1959. Since that time an annual party has been held for Bollington's senior population, usually just after Christmas, as well as visits and gifts for special birthdays and anniversaries.

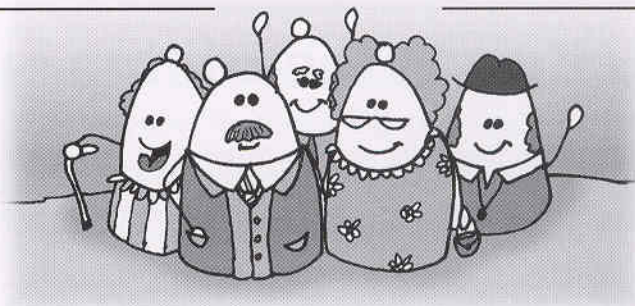
Until recently two parties were held to cater for each end of the town. Each party attended by about 200 people. For some folk it was the only time in the year that they were able to meet up with old friends. Now we hold just one party attended by some 120 people at the Civic Hall. Transport is provided and the party commences at 4pm and finishes at 9pm.

Invitations are sent to the local clergy, one of which, usually the Mayor's Chaplain, says the grace before the meal. The local press are invited to send a photographer so that there is a photographic record of the event.

On arrival at the Civic Hall each person receives a raffle ticket to be drawn later in the evening when a variety of prizes are distributed to the lucky winners. One year the 2nd Bollington Guides made blankets from knitted squares and presented them for the raffles, one to each party.

After the meal entertainment is provided and usually there is an opportunity for those more energetic guests to dance. The Brass Band is very popular with everyone, although they were unfortunately not available this year.

To be eligible to attend one must have reached the age of 60 years, however should one's spouse be younger he/she can accompany the 'senior'. We have no desire to create problems within a marriage.



As you can imagine, things have altered in some ways since its inception. For example, I can remember in the late 1960's calling at the venue, which on that occasion was the old St. John's School; on Church Street, with a car full of Girl Guides, to collect plates of party food for delivery to those who were housebound and unable to attend the party. As the needs of people have changed over the years, so have our deliveries, which in due course became a quarter of tea and two pounds of sugar and are currently boxes of biscuits. The deliveries are made by the Town Mayor, Consort and the Committee Secretary a few days before Christmas. Christmas 2004 saw delivery of some 70 boxes of biscuits to those who were unable to attend our party last February.

As well as the parties we take a gift and a greeting card to all those who attain 90 & 100 years, Golden and Diamond Weddings. The gifts are delivered by the Mayor, Consort and our secretary, the press are also invited to these occasions.

On Christmas Day the town mayor and consort usually visit and take a card to any Bollington Senior Citizen who is spending the festive season in hospital or a nursing home. It is wonderful to see how much this particular activity can be appreciated when people realize that they are remembered.

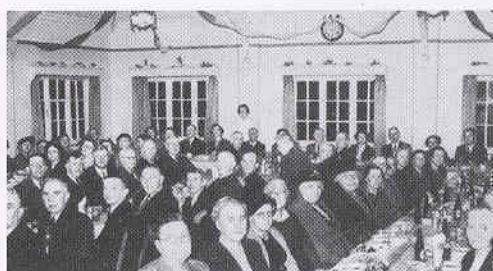
Although the current Town Mayor chairs the committee, this is a courtesy and the only connection we have with the Town Council. We are not funded by the council and rely on donations from local businesses, who are most generous, and from our house to house collection which is held around September each year. We also apply annually to the council for a grant along with all the other voluntary organisations. Every penny we receive is spent on the Senior Citizens and all the committee members are volunteers.

We would be more than pleased to welcome new members to the committee and some helpers for our house collections. PLEASE. If you would like to help call Secretary Mrs. Angela Williams on 573857 or Treasurer Mrs. Mavis Bagley on 573957

Claire Crosbie & Betty Bonson



Christmas parties for Clarence Mill Workers in 1949(above) and for the Pensioners of the 'Fine Spinners & Doublers Ltd.' Dec 17, 1952



Although the current Town Mayor chairs the committee, this is a courtesy and the only connection we have with the Town Council. We are not funded by the council and rely on donations from local businesses, who are most generous, and from our house to house collection which is held around September each year. We also apply annually to the council for a grant along with all the other voluntary organisations. Every penny we receive is spent on the Senior Citizens and all the committee members are volunteers.

MELLOR & JACKSON

SOLICITORS

*Your local Solicitors
for all your legal needs*

*Interviews by appointment
Free initial interview*

The Old Bank House, 52-54 Palmerston Street
Bollington, Cheshire, SK10 5PW

Telephone: 01625 574200 Fax: 01625 562175
E-mail: jmc@mnj.co.uk Web: www.mnj.co.uk

Beasdales
RESTAURANT

THE BISTRO ON THE GREEN

*Brilliant Worldwide Wines
Superb Food at Sensible Prices*

**Telephone: 01625 575058
for reservations**

22 Old Market Place High Street Bollington

Eating out survey

What kind of restaurants do Bollingtonians like?

Are you a fan of traditional pub grub or do you prefer being wined and dined at a fancy restaurant? Is Boeuf Bourguignonne the way to your heart or does Thai food get your taste buds going? So we can find out we would like you to respond to our eating out survey. We'll publish the analysis for all to see in our next issue.



If you don't want to cut the page – copy it or jot your responses down on a piece of paper. Each reply will be entered into a prize draw to win a Free bottle of Bollinger Champagne!

1. How often do you go out to a restaurant?

(Tick one for lunch and one for dinner only)

	Lunch	Dinner
Less than once a month	<input type="checkbox"/>	<input type="checkbox"/>
Once a month	<input type="checkbox"/>	<input type="checkbox"/>
2-3 times a month	<input type="checkbox"/>	<input type="checkbox"/>
Once a week	<input type="checkbox"/>	<input type="checkbox"/>
More than once a week	<input type="checkbox"/>	<input type="checkbox"/>

2. Who do you most often go to a restaurant with?

(Choose one only)

A Partner	<input type="checkbox"/>
B Family	<input type="checkbox"/>
C Friends	<input type="checkbox"/>
D Work/business colleagues	<input type="checkbox"/>

3. In the last 3 months what were the reasons you ate out in a restaurant?

(Choose as many as apply)

A Special occasion e.g. birthday, anniversary	<input type="checkbox"/>
B Meal with family/friends	<input type="checkbox"/>
C Romantic meal	<input type="checkbox"/>
D Work/business	<input type="checkbox"/>

4. How far do you normally travel to a restaurant?

(Choose one only)

A Walking distance	<input type="checkbox"/>
B 1-3 miles	<input type="checkbox"/>
C 4-10 miles	<input type="checkbox"/>
D More than 10 miles	<input type="checkbox"/>

5. What type of food do you prefer to eat in a restaurant?

(Choose a maximum of two)

A English	<input type="checkbox"/>
B French	<input type="checkbox"/>
C Spanish	<input type="checkbox"/>
D Italian	<input type="checkbox"/>
E Other (please state)	<input type="checkbox"/>

6. Where did you hear about the last restaurant you visited?

(Choose one only)

A Word of mouth	<input type="checkbox"/>
B Local newspaper/radio	<input type="checkbox"/>
C National newspaper/radio	<input type="checkbox"/>
D Guidebook	<input type="checkbox"/>
E Internet	<input type="checkbox"/>
F Other (please state)	<input type="checkbox"/>

7. What statement best describes the type of restaurant you like to go to?

(Choose one only)

A "Olde worlde with cosy, rustic charm"	<input type="checkbox"/>
B "Relaxed bistro-style with bustling atmosphere"	<input type="checkbox"/>
C "Modern, minimalist, chic"	<input type="checkbox"/>
D "Traditional, simple elegance"	<input type="checkbox"/>

8. On average, how much do you spend on a meal (ex. drinks) per person when you go to a restaurant?

	Lunch	Dinner
Less than £10	<input type="checkbox"/>	<input type="checkbox"/>
£10-£15	<input type="checkbox"/>	<input type="checkbox"/>
£20-£25	<input type="checkbox"/>	<input type="checkbox"/>
More than £25	<input type="checkbox"/>	<input type="checkbox"/>

9. Your Gender

Male	<input type="checkbox"/>	Female	<input type="checkbox"/>
------	--------------------------	--------	--------------------------

10. Your Age

Under 30	<input type="checkbox"/>	31-50	<input type="checkbox"/>
51-60	<input type="checkbox"/>	Over 60	<input type="checkbox"/>

To enter the Free prize draw & be in with a chance to win a bottle of Bollinger Champagne, please state your name and address:

Please send your completed questionnaire to the following address by 31 August 2005.

'EATING OUT'
FREEPOST
RLUY-XYYE-ACBK
18 Oldham Street
Bollington
SK10 5PJ

All responses will remain confidential and will not be passed on or used by a third party. The competition winner will be notified by post by 9th September 2005 and the analysis will appear in the November issue of **Bollington Live!**

K.R.I.V. Lottery Win!

The huge grant of nearly a million pounds from the Heritage Lottery Fund for the Kerridge Ridge and Ingersley Vale (KRIV) project should mean significant improvements to this very popular, beautiful and historic area. So where will the money go?

The key programmes will be: repairs to drystone walls and management of boundary hedgerows; improved access to the general public; extensive repairs to Cow Lane Mill and work on the mill ponds and historic water courses through Ingersley Vale.

Another important initiative will be a training programme based at Savio house to focus on rural skills such as drystone walling, hegelaying and wildlife habitat management.

This programme will leave a legacy of skilled volunteers who can look after the project area (and other local countryside) when the Heritage Lottery funding comes to an end.

I would strongly recommend the KRIV website www.kriv.org.uk to anyone interested in this project. It has a wealth of information including the excellent Historical, Local Character and Ecological Appraisal documents that were used to build the case for the funding applications. If you don't have access to a computer then you could ask someone who has, or just go to the Library.

Congratulations to all concerned.

Bollington Live! is very excited by this project and is already looking forward to reporting on progress as it happens. **TN**

A word for our sponsors...

The support of our sponsors is valued very highly by the *Bollington Live!* team. So as a way of saying thank you we asked them to tell our readers a little bit about themselves. We have featured 6 this issue and will highlight the others in the Next issue.

...continued from back page



The Crown

Further on up Church Street we come to The Crown, which I last visited a couple of years ago. Looks the same as ever? Wow, quite a change. The Crown has a much more contemporary feel. It still features an open fire, but has a much more 'cool' feel. The kind of place I expect to find mountain bikers and dangerous sports enthusiasts planning their next adventures. It seems to have a sophisticated sound-system and it has a large wide screen tele on the wall. More modern but not at all posy and still with excellent beer. If you're hungry they can provide bar snacks, which I must say smelled excellent. I didn't used to like the Crown. It's definitely back on my list to re-visit.

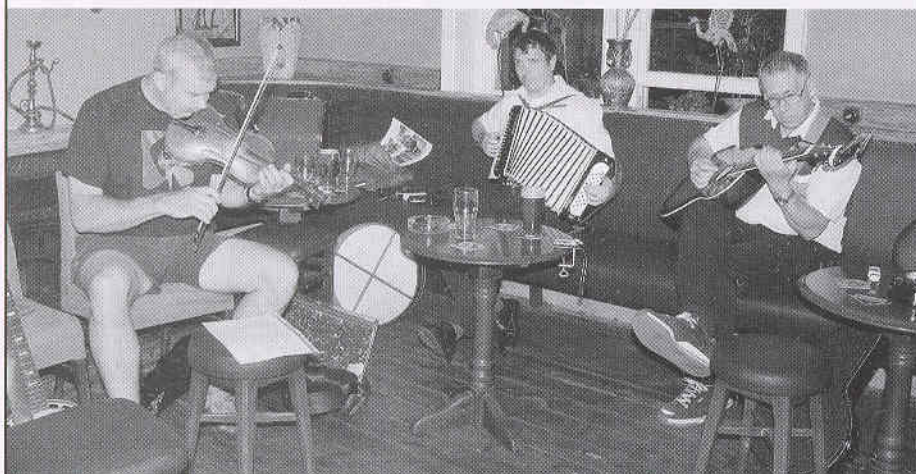
The Meridian

Bare floor boards, numerous intimate small rooms, and the obscure pseudo north African décor of the lounge with odd drums and other object d'art hanging on the orange walls, only make the Meridian, Bollington's oldest pub, feel more authentic. Popular haunt of musicians (especially Monday nights).

Landlady Diane, is always very welcoming, and the beer (usually Black Sheep and one of the local Storm Brewery ales) is always good. Can be smoky in the main lounge and around the bar.



No pub crawl around Bollington is complete with out a visit to the Meridian. For a couple of years they were also a restaurant, but at present it's just a (very good) pub.



Monday night session at The Meridian.

More information on all of Bollington's present and long-gone pubs can be found at:- <http://www.happy-valley.org.uk> The best guide to all things Boll!

So 5 pubs, all excellent! Next issue we'll cover several more. Get out and sample them. *ed.*

Ciba

Ciba Specialty Chemicals adds performance, protection, colour and strength to textiles, plastics, paper, automobiles, buildings, home and personal care products and much more. Ciba produces high quality effects for customers in more than 120 countries.

bollington personal
HOME & CAR INSURANCE

We provide quality insurance for your home and car, buildings & contents and travel. Find out why we are the official Insurance Intermediary of the Year 2004 by calling 0800 1954909.

Bailey
INTERNATIONAL

Steeplejack Company Limited

We offer a specialist and extensive portfolio of services necessary to maintain and protect industrial chimneys, historical, ecclesiastical and miscellaneous high level structures, delivering high quality, reliable results.

Experience
and Research



KAY-METZELER

We are involved in the design, manufacture and supply of polyether foam blocks for the Industrial, Consumer and Specialists markets, including mouldings for domestic and office furniture, aircraft, railway and other transport markets.

Tullis Russell
COATERS

Tullis Russell Coaters manufactures a wide range of coated products. These range from ceramic and non-ceramic papers, stamp and visa papers, educational papers, label papers, inkjet papers and security papers.



Adelphi mill
properties limited

Adelphi Mill Properties own the Adelphi Mill in Bollington, a former cotton mill situated alongside the Macclesfield Canal. The mill has, over the last 15 years, been converted into a business centre housing over 40 companies.

J.A.McNULTY

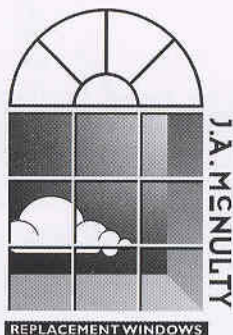
uPVC DOUBLE GLAZING Mfrs.

Windows, Doors, Conservatories
Porches, Double Glazing.
Phone or call in for a free quote
- no obligation

**OPEN FROM
MONDAY TO FRIDAY**

Ingersley Vale, Bollington SK10 5BP

Tel: 01625 574508 Fax: 01625 576248



**Supplying Original Design
& Quality Printing for over 22 years**

- Colour & B&W Digital copying
- Digital and Lithographic printing in-house
- Wedding, Commercial and Domestic Stationery
- Print Finishing, Binding and Booklet-making
- Posters & Promotional Material
- Word Processing and Office Services, Fax and E-mail
- Photographic Retouching, Selective Printing & Enlargements

t: 01625 574828 f: 01625 574025

Your LOCAL w: www.print-and-design.com PANIC printing
Stationers e: sales@bollingtonprintshop.co.uk for RUSH JOBS!
The Old Stables, Queen St., Bollington, Cheshire SK10 5PS

**BOLLINGTON
PRINTSHOP**
original design & quality printing

DOOLEYS

AUDIO | VISUAL

Your Hi-Fi and Video Specialist

106 Mill Street, Macclesfield (01625) 264666 or 423158
e-mail: sales@dooleys-hifi.co.uk www.dooleys-hifi.co.uk

M. CHADWICK



**NEWSAGENTS &
LOCAL LOTTERY AGENTS**



Home delivery of Newspapers & Magazines Seven days a week
70 Palmerston Street Tel: 572306

The Carpet House

The Basement,
Lower Ground Floor,
Pickford Street Mill,
Pickford Street,
Macclesfield SK11 6JD.

Tel: (01625) 420583



- No Joining Fee, No Mirrors, No need to feel self conscious
- Fully equipped gymnasium
- Membership options starting from £20.00 per month
- 10% discounts for a yearly subscription paid in full
- Fully equipped gymnasium and loose weights
- Toning tables/Sauna
- Full programme of classes at all levels
(open to non members)
- State of the art tanning cabins
- Beauty treatment room

Call in for a free no obligation assessment

The Lock Fitness Centre, Adelphi Mill, Bollington, Cheshire, SK10 5JB
Tel: 01625 575125 web: www.adelphimill.co.uk,
email: thelock@adelphimill.co.uk



BOLLINGTON

Live!

Ale and Hearty!

On the face of it, if you go out for a drink in Bollington you've a fair amount of choice, but this magazine's has complained in the past that too many of our pubs are much the same. Things change over time and so two of the magazines premier reporters agreed to take on an important assignment to conduct a review of every pub in town. We'll cover several pubs each issue, assess the atmosphere, the amenities and test the ale.



The Poacher's

A few years ago we could have started at the Cheshire Hunt, but as this is now a private residence, our research started at the Poachers Inn on Ingersley Rd.

"Entirely satisfactory" is the thought that came to mind. The interior is traditional, brass stuff and a stuffed stag's head on the wall. The interior is open enough to not be too smoky, but the layout still feels intimate.

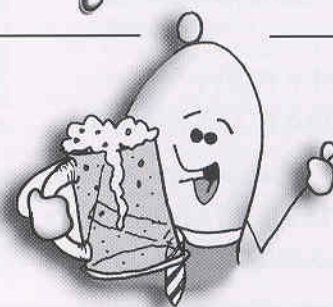
The food has a very good reputation and there is a separate non-smoking eating section. The beer is always kept well, with regular and guest ales. They often have special events and barbecues in the beer garden. The pub has won the East Cheshire CAMRA pub of the year and it's easy to see why.

The Cotton Tree

Heading west towards the heart of old Bollington we come to the Cotton Tree. We tried to tell landlord Tony Butterworth how good his pub is, but failed to get a word in edgeways as he regaled us with stories about long nights with the Seven Nations band during the festival and the time he nearly booked Bob Dylan. Tony is passionate about his music and puts on regular live acts – mostly with a Celtic bias. They also have a regular all comers music session on Wednesday evenings.



The pub was refurbished a couple of years back and but feels more as if it has been 'restored'. Old fashioned with lots of interesting nooks and crannies, old photos and an open fire. It has a pool table and darts. It can be a bit cramped and smoky when busy but



has several excellent ales and a great atmosphere.

Church House



Cutting up Silver St. a two-minute stroll took us to The Church House on Church Street

Usually a very busy pub/restaurant, on this particular Thursday it was surprisingly quiet. As well as food and drink the pub also offers B&B accommodation. The beer was fine although I miss the days when they served Jennings' bitter. Once again this is traditional, with tables made from old sewing machine treadles. We spent quite a while chatting to Canalside radio luminary Nick Wright about the benefits to the community of the radio and the difficulties associated with acquiring the broadcasting license.

Continued on page 18

Corporate Sponsors of Bollington Live!

Bollington Live! gratefully acknowledges the support given by local sponsors, who have enabled publication to continue into our **twelfth** year:

Mellor & Jackson

Kay-Metzeler

Ciba Specialty Chemicals

Bailey Business Park Ltd.

Tullis Russell Coaters

Adelphi Mill Properties Ltd

Slater Harrison

The Adelphi Group

Bailey International Steeplejack Co. Ltd.

Bollington Civic Society

Bollington Town Council

Cutlers Cleaning Supplies

Bollington Group

The Editor cannot be held responsible for the opinion of contributors or the accuracy of the events listings.



BOLLINGTON

Live!