



BOLLINGTON

Live!

Number Thirty Five

Autumn / Winter 2005

INSIDE THIS ISSUE

Festival '62 Remembered

Poetry & Prose

Retail Therapy

Pub Reviews - part 2

Bollington Cricket Club



off
ray

HOLMES ~ NADEN

INDEPENDENT ESTATE AGENTS

A professional and personal service, from open market appraisal to completion of property sales

- ★ Open 7 days a week
- ★ Free open market appraisal
- ★ Independent financial advice available

Bollington Office: 78 Palmerston Street, Bollington, SK10 5PW

Telephone: 01625 560535

Prestbury Office: The Village, Prestbury SK10 4DS

Telephone: 01625 828254

Marie Ann
HAIRDRESSER

9 Grimshaw Lane, Bollington

Tel: 01625 572495

Mob: 07880 665929

OAP's rates: Tues & Wed



Quality Garden Plants and Sundries

London Road, Prestbury, Macclesfield, Cheshire SK10 4DY

Tel: 01625 828748

KELICO
interiors

Kellico Furniture

Lounge & Dining Furniture
in both classic and contemporary styles
also lighting, mirrors, rugs & artwork

Upholstery Designers & Manufacturers
Re-upholstery and Restoration Specialists

Visit our unique showrooms
Canalside, Clarence Mill, Clarence Rd., Bollington

01625 560434

10% discount with Bollington Loyalty Card



For the finest range of bread, savouries,
confectionery and sandwiches in town
- look no further than 116-118 Wellington Road.
Pass through our doorway and we promise you'll find
enough to satisfy even the most jaded palate!

116/118 WELLINGTON ROAD, BOLLINGTON
PHONE: (01625) 571100



Phil's Chimney Sweep

- * Clean, Prompt, Reliable Service
- * Survey and estimate for sweep
- * Gutter Maintenance
- * Chimney Stacks - repointing, capping, unblocking & smoke testing
- * Birds and Wasps nests cleared
- * Pots Cows & Firesides fitted
- * Lucky Chimney Sweep for Bridal and other Celebrations

Over 20 years experience - Full insurance cover on all work

Tel/Fax: 01625 573529 Mobile: 07970 934126
www.cheshirechimneysweep.com e-mail: ps.com@virgin.net

WEST BOLLINGTON POST OFFICE

on Wellington Road - your local car tax office

Superb Greetings Cards & Stationery

Toys & Gifts for all occasions

Children's Books & Local Maps

Major Stores' Gift Tokens

Dry Cleaning * Cash's Name Tapes

65 Wellington Road Bollington Macclesfield SK10 5HT

Tel: 01625 572378

For Landlords seeking...

- Unrivalled personal service
- Full range of services
- Reliable Advice
- Competitive Fees
- Dependable Tenants
- Offices across South Manchester



We provide the answers.
We aim to serve & delight
our clients

For Tenants seeking....

- The BEST PROPERTIES in Bollington & Macclesfield
- Professional help & advice
- Value for Money

phone lines open from
9am to 9pm, 7 days

Tel: 01625 576287 e-mail: bollington@harveyscott.co.uk

www.harveyscott.com

**The Most Thorough Clean You've Ever Seen
or it's FREE! You have my 100% Guarantee**

That's right! If you're not 100% absolutely delighted with my
carpet and upholstery cleaning, I'll re-clean for **FREE!**
Still unhappy? Then I'll refund your money 100%



Call **HEALTHY HOME!** 01625 562 029

NCCA
NATIONAL CARPET CLEANING ASSOCIATION
MEMBER OF THE INSTITUTE OF CLEANING & RESTORATION

Visit the Alnwick Tree House, Northumberland...

...and stay at the luxurious Castle View B & B, with beautiful en-suite rooms,
TV / DVD, tea / coffee making, CH etc.

Only 5 minutes walk from the famous Alnwick Garden
and its acclaimed Tree House

Contact Joan Taylor (who grew up in Bollington)

on **01665 606227**

or visit: www.castleviewalnwick.co.uk



MELLOR & JACKSON

SOLICITORS

Your local Solicitors for all your legal needs
Interviews by appointment - Free initial interview

The Old Bank House, 52-54 Palmerston Street, Bollington, Cheshire, SK10 5PW
Tel: 01625 574200 Fax: 01625 562175 E-mail: jmc@mnj.co.uk Web: www.mnj.co.uk



BOLLINGTON



Bollington Live! is published three times a year on a non-profitmaking basis, with free distribution to households in the town. Under the editorial banner of "Bollington Live! - A voice for everyone" we aim to promote local concerns. Contributions are welcome to:

The Editor, c/o Bollington Printshop, The Old Stables, Queen St., Bollington SK10 5PS

Bollington Live! is published by Bollington Arts Centre & Bollington Civic Society, Wellington Road, Bollington, Cheshire SK10 5JL. Registered Charity No. 515096

Cover: A Cartoon montage by our 'in-house' artist Matt Wray

Editor..... Tim Neale (01625 576397)
e-mail: bollylive@oldbro.org

Editorial Team..... (Graham Barrow), Ros Barton
Anthony Holland, John Liley
Suzanne Newton, Simon Nottage
Andy Skelhorn

Advertising..... Dennis Caulfield (01625 572538)
Mark Stedman (01625 575227)

Distribution..... Ken Edwards (01625 571126)

Printed by..... Bollington Printshop (01625 574828)

Cartoons by..... Matthew Wray

Civic Society tries to strike the balance

Planning applications are often contentious. When they are, usually everyone is up in arms in opposition. However, there has been a case recently where there was a considerable division of opinion. I refer to the proposed extension to 1 Beeston Brow.

This is the end property in a delightful row of three storey cottages where the top floor was once a garret for home workers, an important heritage feature. The proposal, which has now been approved, is to extend



the house onto the open land that stands above the entrance to Beeston Brow and Queen Street. The extension would also be three stories but overall lower than the present roof line.

It is further proposed to build a garage cut into the ground with its door in the fine stone retaining wall on Queen Street.

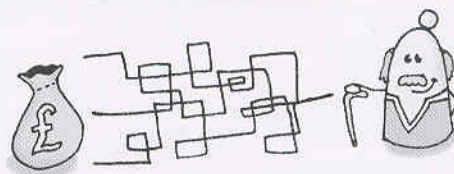
Some people strongly opposed the development on the grounds that it would spoil the original view of an outstanding row of cottages and the wall along Queen Street, and there were those who see it as a perfectly reasonable development in keeping with the existing structure.

This case raises the difficult question - in trying to conserve our heritage should we be fixing it in aspic, trying to preserve the town in a particular era, or should we be accepting that there will be changes with some structures disappearing and new structures being developed in their place or beside existing notable buildings?

The Civic Society has members supporting variations of both these views, and so it is sometimes difficult to know whether, as a body, we should support, oppose or simply ignore a development proposal. Largely we try to influence the planners and local councillors to give the proper weight to conservation when considering sensitive proposals and to point out where the applicant is trying to do something that is contrary to the finer points of conservation. We win some, we lose some. Such is life, but at least we know that our views have been heard.

The Civic Society committee would be pleased to hear the views of residents. Why not write to the editor and let us hear your opinion on the clash between conservation and development. Macclesfield Borough Council have recently published an appraisal of the Bollington and Kerridge Conservation Areas in response to the Parish Plan and are consulting the public for their views. Find links to the appraisals at: www.happy-valley.org.uk/civicsociety/ca.htm

Tim Boddington



Money Maze East Cheshire Age Concern

The way in which state pensions and benefits are paid has changed. Pension order books have been phased out, and the usual way people receive pensions and benefits is by direct payment into an account of their choice.

The Money Maze service offers information, advice and practical help to people (over 50 years old) and their carers about the way they can receive payment of pension and benefits.

Staff can talk through the different pension payment options that are available and can help people to open accounts, set up direct debits and standing orders, use PIN numbers etc. We can also help older people to check that they are claiming all of the welfare benefits that they might be entitled to.

The service is free, confidential and impartial to enable people to make informed decisions, with home visits available.

For further information, contact Age Concern East Cheshire on 01625 612958 or 01625 539366, or email: enquiries@ageconcerneastcheshire.org.uk



**Home Cooked
Food
Real Ale**

Adlington Road, Bollington
01625 575147

NOW OPEN

Not so 'Super' Stores for our beleaguered retailers

With three supermarkets within a mile of each other, Macclesfield is typical of UK towns. Outlying places like Bollington are suffering due to competition from these superstores. Tesco recently announced a record £900 million annual profit, which they say is because the public is happy with their wide selection, and excellent value for money. But are we all that happy?

Shops in Bollington are competing against giant multinational companies, so obviously it's an uphill battle. One of the biggest challenges they face is what's called cross-subsidization. Supermarkets have such massive cash flow that they can sell milk or bread at a lower price than it costs to produce. They then make up the short-fall from profit they make from other parts of the store. Convenience shops that rely on the sale of milk and bread just can't compete and are forced to close. The supermarket then turns its attention to the local butcher or greengrocer, until they virtually have no competition. This practice is illegal in countries like Spain and France, but here in the UK, the superstores use this lack of legislation to their advantage. The supermarkets claim they benefit communities by creating jobs, but the truth is they are reducing employment, because they so incredibly efficient that they employ fewer people per pound turnover compared to a smaller store. Jobs the supermarkets do create pay barely more than the minimum wage. But that's not the only way the local economy is affected.

If you spend a pound in a superstore the profit will go to the shareholders of the superstore. If you spend a pound at the local butchers or bakers, that profit will go to a local person who will probably spend it here, in Bollington. Indirectly that helps us all.

No one should feel pressured to buy locally out of a sense of civic duty. Price and quality of food should be the driving factors, so I did my own test.



I bought a weeks supply of fruit and vegetables at a local farm shop on London Rd, I then bought the same items from a supermarket in Macclesfield. I was amazed at the results. I paid 30% more at Tesco, but that wasn't the biggest distinction. The taste of the food bought from the farm shop was by far superior. Not a highly scientific study but it is a good indicator, and I was genuinely surprised. The quality of food in the supermarket shelves is a concern, as is where they get it from.

Superstores buy from whoever gives them the best price, which means sourcing produce from far and wide. You might be drinking milk from Poland or eating lettuce from the US. Buying milk from half-way across Europe when dairy farmers, right here in Cheshire are going broke seems nonsensical. It also increases the number of lorries on the road, damaging to the environment.

The situation in Bollington is a textbook example of how the success of the superstores has changed our way of life. We're told that the supermarkets do so well because they provide the convenience of buying all your shopping under one roof. But is it convenient for an elderly woman to catch a bus to Macclesfield, and then have to walk back to the bus stop with all her shopping.

The foundation of any neighbourhood is built on the hustle and bustle of local shops, but the trend towards superstores is decimating communities all over the country. Some say it's merely a matter of market forces but like a runaway train the superstores are using their muscle to destroy everything in their path. **Don't buy from local shops for the sake of saving Bollington. Do it for yourself!** SW

Goodmans shop (above) on High Street, the last day before the shop closed in 1962 (Photo courtesy of the Civic Society's photo archive, Discovery Centre Clarence Mill)

1964 Festival Fever

The first of a series of articles by Dr. Jean Coope about the origins of our successful Festivals

'A brand snatched from the burning' was how Margaret Ingram used to describe herself. She was a journalist, living at The Rookery next door to our home at Turner Heath. Margaret wore purple lipstick, large purple earrings, and whenever possible, a pink or purple cardigan. In the sixties she was employed in publishing an account of the Moors Murders but she also found time to write a beautiful and perceptive account of Bollington's history, 'Portrait of a

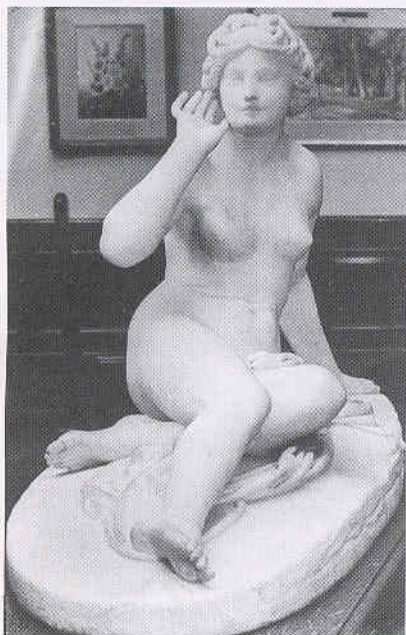
Village: The Happy Valley', which is available for reference at the Discovery Centre.

Father Derek Smith and his family lived over the road at St Oswald's curate's house, and in 1963-4 he would come over to sit by the fire in the Big Room and chat with Margaret and ourselves. The subject under discussion was a possible Festival. This was Father Derek's brainchild and the idea was quickly taken up



by John¹¹ and myself, although, with five young children and another baby due that November I did not have much time for discussion.

The Festival was quickly organised with the help of many friends, including Alfred Bass and Jim Renton, and Councillor Mrs Elaine Mosley who made the arrangements for the Carnival. This was a brilliant affair



involving horses and ancient Britons, watched by myself, heavily pregnant, and our five small children sitting on the wall at Turner Heath.

We hired a canvas tent and Jim Renton arranged for it to be erected on the Recreation Ground. A real problem was finding enough men to provide 'night sitters' to protect it from vandals. None was paid - all help was voluntary and this has been a recurring feature of every subsequent Festival.

After a few days heavy rain there was an emergency phone call - the tent had fallen down! Worse still, the tables were spread for afternoon refreshments and pieces of wet canvas were mixed up with broken sausage rolls and jellies. We got together a team of brave men from all over the village and they came to the Rec. to put it all together again. Later the WRVS (Women's Royal Voluntary Service), with Binkie Renton, Ruth Ferns and Ida Kershaw set up a splendid field kitchen with a blazing brazier in the middle of the Ground.

The first concert for the newly formed Festival Choir was Handel's 'Messiah', a good choice, as everyone knew the tunes. The Choir was formed from St. John's Church choir plus other friends and singers who felt happy to take part in the first Festival. There were great problems in combining a traditional village church choir, used to simple harmonies, with a

high standard of performance and the demanding repertoire that we later attempted. Hopelessly out-of-tune voices were allowed to fail the audition, which John conducted at home from our second-hand grand piano, or even persuaded to leave because 'the night air would be harmful to their voices'. There was a story going around that when new patients arrived at the practice he would first ask them to open their mouths and sing "Ahh". Promising basses or tenors were then invited to the next rehearsal.

Conducting an orchestra did not turn out to be easy so he booked a series of courses at week-ends and summer schools to study the technique. One was taken by Sir Adrian Boult, then aged over eighty. His first step was to produce a matchbox. This contained rubber bands, which were then slipped over the middle fingers of the right hand. The conductor's baton was held in place by the bands and moved about 5 millimetres in various directions to demonstrate his minimalist technique for avoiding dramatic gestures. John learnt a lot and was later able to conduct large orchestras and choirs in such great works as 'Elijah' and the Verdi Requiem.



Bollington Festival Players came together during the first Festival and involved Pat and George Penney, and in later productions their daughters Fiona and Kathryn. John played a leading role in 'The Two Bouquets' and luckily remembered to remove his stage make-up before appearing with the Lord Lieutenant of the County at the opening ceremony.

Bollington Art Group began under the leadership of Doris Liley. They met at her house and later at the Civic Hall

and the Arts Centre, and have had very successful yearly exhibitions ever since. Binkie Renton was involved from the start and has written its history in an interesting article for *Bollington Live!*



Above: The festival spirit has always been prevalent in Bollington, as this picture of a carnival float from the 1950's/1960's shows.

This first Bollington Festival was an extraordinary venture for a small community to attempt. We had no initial capital and no experience in running Festivals. Booking seats and the sale of tickets was often done on the phone from our house and by the long-suffering secretarial team at the Water-house (Bollington Medical Centre). I counted twenty extra incoming calls to our house each day at the peak of the Festival in addition to medical calls and those from family and friends. However, thanks to our hard-working Secretary and Treasurer we made a small profit.

At a later date, to our astonishment, we were approached by the town councillors of Buxton who were about to organise their first Festival and wanted some advice on how to get started!

We will have more of Dr. Jean's memories in future issues - ed!

† Dr. John Coope, Jean's husband

Pictures left and above: Part of the exhibition centre and a sculpture by Alfred Gatley at the 1968 Festival.

(All pictures courtesy of the Civic Society's photo archive, Discovery Centre, Clarence Mill)

"The Storms of Acias"

My name is Dominic Took. I am a 19 yr old student, currently studying Computer Science at Staffordshire University. I live with my Mum in Kerridge and have done so for the past six years.

Writing has been something I have loved to do since I was a small child, I can remember jotting down short plots when I was as young as six and I continued to write these ideas down as the years went by. I had trouble reading and to some degree writing, at school and I later found out that this was due to dyslexia after being diagnosed at the Dyslexia Institute. All through school I had trouble keeping up with my peers, though I have now managed to attain a BB grade in AVCE ICT at Macclesfield

College, which without the help of its dedicated staff I'm sure I would not have done so well.

I am now about to start my degree course, which I am very much looking forward to and I am also publishing my first book, which is a dark fantasy novel for young adults, called "The Storms of Acias." I am publishing the book through a self-publishing company called Troubador, part of Matador.

The plot centres on an event in the life of Graciou, where a violent and devastating Storm rages through the castle and town where he lives with his father and extended family, eventually cutting him off from them in its wake.

We then find Graciou in his

eighteenth year, still wondering what happened all those years ago and as an old ghost returns to the house where he now lives, he is forced to make a decision. That decision causes him to flee the safe haven and journey back to his old home, to find it deserted and ruined, here Graciou only finds questions instead of answers.

That is until he meets a mad old woman, who begins to tell him her story, yet as she does so, is all as it would seem?

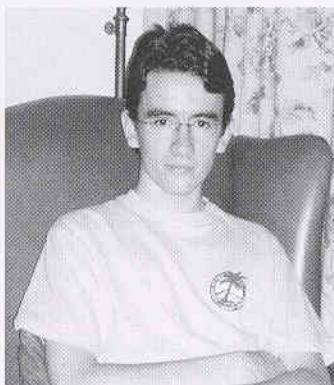
As Graciou journeys on to find his father and fight those that would try to stop him, he begins to uncover the reasons behind his life and indeed why he was protected for so long.

Graciou tries to grapple with the strange things he begins to see and all the while The Storm works to play a game against him, one that if he does not manage to unravel, may become his very undoing.

The book is currently available on www.amazon.co.uk under the title "The Storms of Acias" and www.whsmith.co.uk.

I am also currently working on a second book called "The Voices of Light and Darkness" which I am hoping to also publish within the next year or two.

DT



Bollington Poems

William S Broster wrote in the 1970's for the Macclesfield Express and culled a lot of material from the Macclesfield Courier, founded in 1811 and still to be consulted on microfiche in Macc. Library.

Every now and again he was inspired to poetical fancy. In the winter of 1973 he took on the majesty of our Aqueduct, built in 1831 by William Crossley.

We've used this example as a spur to ask people to submit poems on Bollington's landmarks and themes of modern life.

The Aqueduct - 1831

*The aqueduct is man's design
A tower of strength to Bollington,
A Herculean labour
Completed eighteen thirty one.*

*Subsidence and marshy tracts
Were impediments to success,
As was the River Dean, in spate
Which hindered rapid progress.*

*Engineers changed the river course
To meander close by the rocks,
To allow the firm foundations
For the embankment,
but with shocks.*

*The diversion of the river
Was ingenious and rewarding
With aqueduct and buttresses
For many centuries enduring.
Overhead waters stay unmoved
Until barges disturb their peace,
Drawn by strong, devoted horses
Whose worthy labours never-cease.*

*The advent of the speedy train
Soon replaced the silent waters,
Whose short life was terminated
Like a lamb led to the slaughter.*

*'Tis a lasting monument of fame
Of great width and declivity,
Of permanent abiding strength
And enduring reality.*

*Agess pass, but each relents
To see a noble deed made void.
All honour to our forefathers
Whose tasks were
worthily employed.*

Not the greatest poetical production perhaps but it does capture the enduring nature of this splendid structure and reminds us that the Dean originally flowed in the centre of the valley slowly through thick boggy grass and reeds that harboured swarms of mosquitoes.

Beasdales
RESTAURANT

THE BISTRO ON THE GREEN

Brilliant Worldwide Wines
Superb Food at Sensible Prices

Telephone: 01625 575058
for reservations

22 Old Market Place High Street Bollington

Cars & Vans 4U

Looking for a new car or van?
Let us help you:

- Lease Purchase
- Contract Hire
- Finance Lease
- Outright Purchase

www.carsandvans4u.co.uk
Macclesfield Tel: 0845 2300 771

Palmerston Travel

Independent Travel Agents

- Choose from a wide selection of Major and Specialist Tour Operators
- Many brochures not available in multiple agencies
- Business Travel
- Specialists in tailor-made arrangements
- Discounted Worldwide Air Tickets

We are here to help you to make an informed choice in respect of your Travel Arrangements

**REAL CHOICE - REAL VALUE
REAL PEOPLE**



Fully ABTA bonded

Palmerston Travel

15 High Street, Bollington, Macclesfield, Cheshire SK10 5PH

Tel. 01625 574448 Fax. 01625 575926

BOLLINGTON Veterinary CENTRE

**24 HOUR
SERVICE**

Consultations by appointment

Mon: 9-10am 2-3pm 4.30-7pm Thurs: 9-10am 2-3pm 4.30-7pm
Tues: 9-10am 2-3pm 4.30-6.30pm Fri: 9-10am 2-3pm 4.30-6.30pm
Wed: 9-10am 2-3pm 4.30-6.30pm Sat: 9-12.30pm

Middlewood House, Grimshaw Lane, Bollington, Cheshire SK10 5JB

Tel: 01625 572999



**BOLLINGTON
LEISURE CENTRE**



FULLY EQUIPPED GYM & FITNESS CENTRE
20M SWIMMING POOL

SWIMMING LESSONS FOR 3 YEAR OLDS TO ADULTS
HEALTH CENTRE WITH SAUNA AND HIGH PRESSURE SUNBED
BEAUTY TREATMENTS, MASSAGE, REFLEXOLOGY & CHIROPODY
AEROBICS AND OTHER FITNESS CLASSES
2 HIGH QUALITY, COMPETITION SQUASH COURTS
CHILDRENS SOFTCENTRE
FULLY LICENSED BAR AND FUNCTION ROOMS

THORNEYCROFT

INDEPENDENT ESTATE & LETTING AGENTS

Thornycroft Estate & Letting Agents offer an unbeatable service to its clients, whether selling or letting! With local coverage in both Bollington and Holmes Chapel, we can offer a unique service, combining the sale and your conveyance within one company!

We have a range of attractive offers, and have helpful, knowledgeable staff on hand 7 DAYS A WEEK!

DON'T HESITATE - CALL US TODAY.

45 Palmerston Street, Bollington
Cheshire SK10 5PX
Tel: 01625 562811

16 The Square, London Road
Holmes Chapel CW4 7AB
Tel: 01477 533111



Open 7 Days per week for SERVICE WASHING/DRYING anything

Either wash them yourself OR leave them with us for our expert staff to wash them for you.

Separate facilities for: Horse Blankets / Pet Bedding / Duvets, Ironing Service

Come to the Washing Well for: Dry Cleaning (including Curtains and Wedding Dresses), Shoe Repairs, Shirt Service, Repairs & Alterations

FREE COLLECTION & DELIVERY available for large loads or for elderly / disabled.

84 Palmerston Street, Bollington Tel. 01625 572526

M. CHADWICK



**NEWSAGENTS &
LOCAL LOTTERY AGENTS**



Home delivery of Newspapers & Magazines Seven days a week
70 Palmerston Street Tel: 572306

The Carpet House

The Basement,
Lower Ground Floor,
Pickford Street Mill,
Pickford Street,
Macclesfield SK11 6JD.

Tel: (01625) 420583

Belleza

health & beauty

SPECIAL CHRISTMAS OFFERS

Gift Wrapping and Gift Vouchers available

Dermologica Buy three or more products
and receive a **FREE FACIAL worth £20**

Dermologica Luxury skin exfoliant facial, also neck &
shoulder massage and eyebrow tidy **all for £30**

Chameleon Spray Tan Two Spray Tans **ONLY £35**

Tel: 01625 560650

62 Palmerston Street, Bollington



BOLLINGTON



NOVEMBER

Fri. 18th, 7-9, Suns 2-4 'till Dec. 28th
Northern Scapes.

Arts Centre: An exhibition of multi-media paintings of the Peak District.
Tel Jessica Owen: 07796 368986

Friday 25th, 8pm

What shall we do with the Turkey?

Arts Centre: Bruce Kendrick from Liberty Wine' will present a dozen wine ideas for the festive season.
Tickets £5 (limited number) Tel: 575287

Saturday 26th, 8pm

Bollington Chamber Concerts

Arts Centre: Northern Baroque presents 'The Grand Tour', works by Telemann, Handel, Vivaldi and Hotteterre Le Grand on violin, oboe, recorder, cello and harpsichord.
Ticket £10 (£5 concs) 560355/575287

Sunday 27th, 7pm

A Working Holiday in South Africa

Arts Centre: An illustrated talk by Kim Creasey which looks at the flora of South Africa and the magnificent southern right whales. Tickets £3.00 (pay at the door) Tel: 575287

Saturday 26th, 12 noon till 3pm

Dean Valley School Christmas Fair

Sunday 27th, 7pm

Wednesday 30th, 7.30

Fund Raising Concert

Methodist Church: Concert in aid of February's Senior Citizens Annual Party (see Feb) Tickets £6.00 Call 573851.

Wednesday 30th, 6pm

'Reels on Wheels'

Film Night at Pott Shrigley Church School 'Return of the Were Sheep'
Tickets £4 adults £3. children.

DECEMBER

Friday 2nd, 6-8pm

Winter Fair

Pott Shrigley Church School, complete with mulled wine and brass band.

Friday 2nd, 7.30pm

Disco Ern

New Con Club

Saturday 3rd, 2-4pm

Bollington Cross School

Xmas Fair

Saturday 3rd 7pm

Winter Wonderland Xmas Concert

Methodist Church: Tickets £7, £6 Conc
Tel: Jean Forrest 01663 743041

Saturday 3rd, 8pm

Jazz at the Arts Centre

T.J. Johnson's Bourbon Kick
Tickets £8.00 Tel 01625 574410

Friday 9th, 8pm

Bolly Comedy Club

Arts Centre: Tickets (over 18's only)
£7.50 Tel 01625 560774

Sat. 10th December 10am to 12pm

Bring & Buy Morning

Ovenhouse Lane Community Centre
Coffee, mince pie; in aid of February's Senior Citizen Annual Party (see Feb)

Saturday 10th, 7.30

Bollington Brass Band Xmas Concert

Methodist Church: Tel Paul Berry
01298 816688

Tuesday 13th, 7.30pm

Messiah For All

Arts Centre: All singers are welcome to take part in our annual performance.
Tickets from 01625 575287
All proceeds to M.A.S.T.

Thursday 15th, 1pm

Bollington Brass Band and Altrincham Choral Society

Stockport Town Hall: Tel Paul Berry
01298 816688

Friday 23rd, 8pm

Guitar Ray Pickens

The New Conservative Club

Christmas Eve, 6pm

Carols round the Xmas Tree

Town Hall: With Bollington Brass Band
Details from the Town Hall (572985)

Christmas Eve,

Disco Ern

The New Con Club

Christmas Day, 12 ish

Bollington Brass Band

- atop White Nancy

Saturday 31st

A.D.Karaoke

The New Con Club

JANUARY

Saturday 7th - Sat. 14th, 2pm (7, 8, 14) 7.30pm (7, 11, 12, 13, 14)

Jack & The Beanstalk

Arts Centre: Boll. Festival Players
Traditional pantomime to bring in the New Year. Tickets £6.00, £4.50 (Conc.)
Family of 2 adults & 2 children £18.00
from 01625 875326

Friday 20th to Sunday 5th Feb

Silk-n-Threads

Arts Centre, Exhibition of silk paintings, embroidery and mixed media. Open
Sundays 2-4pm (when the artists will be present) and during other events.

Saturday 21st, 8pm

Navarra String Quartet with Richard Harwood, Cello

Arts Centre Boll. Chamber Concerts
present this young quartet playing
pieces by Haydn, Schnittke & Schubert
Ticket £10 (£5 concs) 560355/575287

Sunday, 22nd 7pm

Family Life in Ancient Egypt.

Arts Centre: Jeanne Whitehurts from Poynton Egypt Group presents a fascinating insight into this important civilisation. £3 at door. Details: 575287

Saturday 28th, 8pm

Jazz at the Arts Centre

Alan Beechey's Bright Stars of Jazz.
Tickets from 574410

FEBRUARY

Sunday 5th, 7pm

The Macclesfield Canal

Arts Centre: Tim Boddington looks at this popular local amenity, one of the last waterways to be built in the country. £3.00 at door. Tel: 575287

Saturday 18th, 8pm

Jazz at the Arts Centre

Mart Rodger Manchester Jazz. An old favourite returns! Tickets from 574410

Sunday 19th, 7pm

Beating Time

Arts Centre: Nicholas Smith the music director of the South Carolina Philharmonic and artistic director of the 2005 Bollington Festival talks about his life as a conductor of symphony & chamber orchestras. £3 at door.
Tel. 575287.

Dates for your Diary

Saturday 25th

Senior Citizens Annual Party

Civic Hall: All of you over 60 years of age are eligible together with spouses. Transport arranged if required, a meal provided, followed by entertainment and dancing. Details from 573851

Saturday 25th, 8pm

McFarlane String Quartet

Arts Centre: These superb musicians return to play Haydn & Schubert and a rare performance of Walton's Quartet in A minor. Tickets £10 & £5. (Conc.) from 560355 or 575287

MARCH

March 3rd to April 9th

Textiles Exhibition

Arts Centre Gallery: An exhibition of textiles by Alison Roberts and Angela Oswald.

Sunday 12th,

North West Regional Brass Band Championship

Winter gardens, Blackpool. **Bollington Brass Band** Supporters Welcome. Tel Paul Berry 01298 816688

Sunday 19th, 7pm

What Mops Can Tell You

Arts Centre: Historian Chris Makepeace shows how mops provide a wealth of information to historians and anyone else who finds them interesting! Chris will bring a selection of mops for sale. £3. at the door. Ring 575287 for details.

Saturday 25th 8pm

The Esprit Trio – A French Evening

Arts Centre: Bollington Arts Centre Chamber Concerts present an evening of Instrumental & vocal music on flute, harp & cello by great French masters Romeau, Debussy & Ravel. Tickets £10, (£5 conc.) from 560355 / 575287

Friday 31st,

Charity Civic Dinner

Hollin Hall: In aid of the Mayor's chosen charity, The Drop In Centre. Details from the Town Hall 572985

Canalside Community Radio...

...will soon be back on air.

Sadly the station was not awarded a permanent licence this time; undaunted, Canalside Community Radio will be on air and serving the Bollington area again from the 8th December till 4th January '06, so tune in on **97.6FM** (a different frequency to the festival broadcast.)

Many of the old favourites return, including 'Pensioners Paradise', 'Kiddies Drive-time' and 'The breakfast show'. A new feature will be a greater involvement with the local secondary schools, who will be broadcasting their own 'School's Drivetime'.

The team have learnt from the last broadcast at the Bollington Festival, and feel that they are in a far better chance of success with achieving a full time licence in the next round of OFCOM awards. AH



Hat-Trick?

Dan Longman contacted us with a question. He wrote...

"I recently brought a top hat with the original box app. 1930's. The address on the box states that it once belonged to a Mr. ABT (Albert?) Craigs who lived at Beristall Hall Farm, Pott Shigley, Bollington.

Do you know of anyone who could help me to find out more about this man as I'm very interested in the history behind the hats?

Thank you.

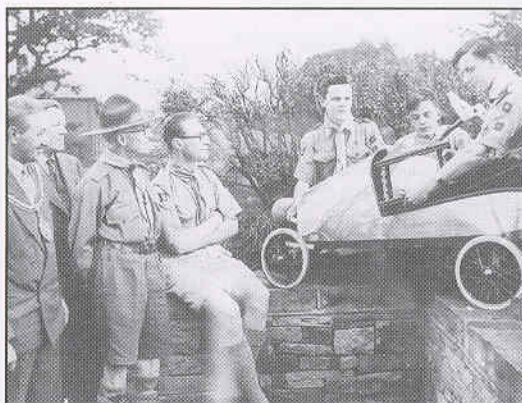
Dan Longman, 16 Milton Road East, Birkenhead, Wirral, CH42 0NJ

Can anyone help Dan?

Places from the past...

is a discovery trail to let people find out more about our local history. By using Jean's book, "Voices From the Past" (reviewed in last issue of Boll. Live!) and the new 'heritage trail' sheet Jean has developed, you can wander around the Bollington area finding places from the book and discover how they have changed since the Victorian era..

"Voices from the Past" (£15) and the trail sheets are available from the Discovery and Drop In Centres, West Bollington Post Office and the author Jean Wright on 572118.



Caption Competition

The sender of the best (printable) caption will win a £10 prize. The name of the lucky winner and the origins of this picture will be published in the next issue.

Send your captions to: The Editor, Bollington Live Magazine, c/o Bollington Printshop, The Old Stables, Queen St. Bollington Cheshire SK10 5PS



Hollin Hall

Jackson Lane, Kerridge
Nr. Bollington, Cheshire SK10 5BG
Tel: 01625 573246 Fax: 01625 574791

Friday January 13th 2006
Murder Mystery Night
3 Course Dinner & Murder! - £20.50

Friday January 20th
Our Final Xmas Party
A superb Xmas meal followed by dancing - £12.50

Friday February 3rd
60's & 70's Dinner Dance
3 Course Dinner & Murder! - £16.95

price per person
Lunches Served Every Sunday 12.00 - 2.00pm
£12.95 per person for a 3 Course traditional Sunday Lunch
Dinner Served every Monday - Saturday evening
from 7.00pm to 9.30pm in the fabulous Orangery restaurant

To make a reservation or for further details, please contact us on 01625 573246

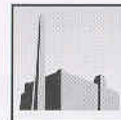


J.J.J. HEATHCOTE LTD.

From our own LOCAL FARMS
for Beef Pork & Lamb

Palmerston Street, Bollington: 572202

114 Wellington Road: 573172 5 Fountain Place, Poynton: 872154



Adelphi mill

properties limited
Adelphi Mill Properties Limited
Adelphi Mill, Bollington
Cheshire SK10 5JB

The Adelphi Mill & Clarence Mills are situated alongside the Macclesfield Canal. The mills have been re-furbished and now house between them over 50 businesses.

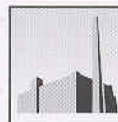
The on-site facilities include large landscaped car parks, lifts, and coffee shops.

Space available to let, refurbished office suites, workshops and light industrial units

Tel: 01625 575125

E-mail: info@adelphimill.co.uk

Websites: www.adelphimill.co.uk or www.clarencemill.co.uk



Clarence mill

Clarence Mill Limited
Clarence Mill, Bollington
Cheshire SK10 5JZ

• WINDOWS • DOORS • FRENCH DOORS • CONSERVATORIES • REPAIRS •
FASCIA • SOFFITS • GUTTERS • PORCHES

BOLLINGTON VALLEY

WINDOWS & CONSERVATORIES

Quality Windows & Conservatories



- ✓ FREE design ✓ FREE estimates
- ✓ Everything made to measure
- ✓ High security ✓ Energy saving
- ✓ Care and attention to detail

CALL TODAY ON 01625 571177

• WINDOWS • DOORS • FRENCH DOORS • CONSERVATORIES • REPAIRS •
FASCIA • SOFFITS • GUTTERS • PORCHES

michael
HART
& COMPANY

**CHARTERED SURVEYORS
LAND and ESTATE AGENTS
AUCTIONEERS and VALUERS**

2 Henshall Road Bollington Cheshire SK10 5HX
telephone Bollington 01625 575578
fax Bollington 01625 576713
e-mail info@michael-hart.co.uk

FREE Pre-sale valuations & advice
Full property letting & management service
All types of surveys and valuations undertaken
Independent mortgage advice

www.michael-hart.co.uk

Also at: 36 Park Lane Poynton Cheshire SK12 1RE telephone 01625 876331

Fun fitness with Carla gilder

FUN FITNESS! NO JOINING FEE! NO MIRRORS!
BOXERCISE-CIRCUIT-TRAINING-BODY BLAST-60+ EXERCISE
SKIP STEP & CRUNCH- POSTNATAL-KIDS FITNESS 5-12YRS
Classes: 6 days a week At The Scout Hall Albert Road Bollington
New Luxury Gym for Personal Training
AFFORDABLE & EXCLUSIVE!
01625 576797 07753 170424

Chris Plant Dental Lab

DENTURE REPAIRS

2nd Floor, Adelphi mill, Grimshaw lane, Bollington
Tel. 01625 560881



10% DISCOUNT
with Bollington loyalty card

Designers & Manufacturers in all Woods & Finishes
Individual, Innovative & Inspirational Designs

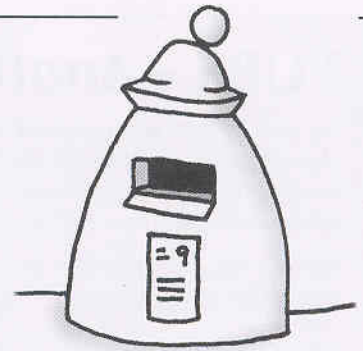
IN STOCK NOW

New Oak ranges, Leather & Fabric Sofas
Sofa Beds and Mattresses

Tel: 01625 576362

Retail: 39 Palmerston Street, Bollington
Mfr. & Wholesale: Unit 20, The Old Brickworks, Pott Shrigley

Letters to the Editor



Politics & Parties...

Dear Editor,

I want to take issue with Graham Barrow who put forward the argument, that one hears from time to time, that national politics has no place in a well established local community like Bollington. His basic thesis is that all you need is energetic people with ideas to get together in voluntary associations. You do not need an elected Town or Parish Council to provide continuity or to focus and determine priorities.

He particularly objects to the involvement of political parties in local government at the Community level.

My perspective is entirely different. First in a well-established mature democracy public election is a very strong force giving legitimacy to a representative. Most voluntary organisations in the community, however well intentioned and well meaning, lack that basic legitimacy. The Bollington Civic Society is an excellent organisation devoted to maintaining the distinctive historical character of the town. Mr. Barrow has been associated with this body for a long time and has played a distinguished part in its deliberations. However its committee is a self-selected group of people from a limited body of members. We work best when we work through and with elected members of the Town Council and our Borough and County Council representatives.

Secondly the Town Council has a long established tradition and a strong legal basis as well as its democratic mandate to represent the town as a whole. No single interest group can replace their general responsibility to determine priorities for the town. Contrast the position of Bollington with the large unrepresented urban area of Macclesfield for example. Bollington has a continuing identity; Macclesfield has been subsumed with the greater Borough and the interest of its citizens ignored.

Thirdly voluntary societies come and go, rise and fall; the Town Council endures, supported by its paid officials as well as by the elected representatives. The Council provides a continual focus and vital support for community activity. We may complain about its lack of power or the nature of its members. That is our privilege but it is there to represent us day in day out.

Lastly we come to the controversial role of political parties with a national basis. Local political parties bring together people who agree on broad principles and who have the vision and understanding of the working of local and national politics. They are schooled in debate on public issues and they have a broad agenda that embraces the local community. They are prepared to choose suitable people to stand as candidates and to carry out the gruelling work of campaigning for those candidates. They are the ones who write the leaflets, deliver the literature door to door, knock on peoples' doors and talk about local issues

Festival and the Young Generation

I am a member of the 'young generation' and didn't get to go to much of the festival being as it was smack in the middle of my A-levels, but most of what I did go to I really enjoyed (although I admit I didn't manage to stick out the whole of Ken Dodd!).

As for the 'World Famous Band' some are slightly scornful of, I assume they mean Seven Nations. Anybody that didn't go see them really missed out. I had never heard of them before, but having nothing better to do that evening I went to see them with my brother and they were absolutely fantastic. Admittedly we were the youngest people there but I was pretty confident that the middle-aged audience they had before them was not who they normally played to, the presence of the mosh pit, loud guitars and psycho drummer gave that impression... anyway I checked them out on the internet later and it was cool to see on their website that Bollington was on the list of venues they had played at, alongside a lot of much bigger places Stateside and in Canada and their many fan pages showed that if not world famous they definitely have fans world-wide. If they come back next time I will definitely drag along all my friends.

There was meant to be more stuff for people our age. Other events were dropped because nobody with the right expertise was prepared to help organise them. Despite their many links The Festival Committee did unfortunately not have an insider on the Manchester/Liverpool rock scene, unsurprising really as there were few younger volunteers. I think if our age group wants events for us maybe we need to get involved and run them for ourselves. Only if we get involved in organising the festival line-up can we reasonably expect more events to reflect our tastes.

Anna Spinks Bollington

on the doorstep. To my mind they are a vital ingredient in local democracy. And we should remember that they do all this without financial reward.

So Mr. Barrow in my view we are lucky in Bollington to have local people who are not only devoted to their particular interests in the community but are prepared to act in a wider sphere on our behalf.

Don't knock them. Vote for the one of your choice and support your elected Town Council whenever you can. That is an important element in strengthening our community.

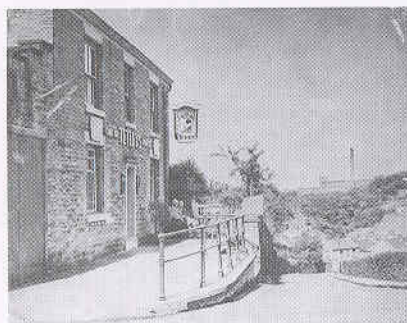
Ken Edwards, 48 Hurst Lane, Bollington.

PUBS - Another round!

No sooner had we reviewed The Church House in the last issue, it was all change, and a change for the better, with a takeover from a consortium of locals interested in reviving a once thriving pub. It is still early days, but on recent visits, everything seems to be going in the right direction.

We started our pub survey in the last issue, assessing the atmosphere, amenities, and the quality of ale on offer. Now for part two....

The Red Lion



A good climb up Red Lion Brow or Lord Street necessitates a stop at the Red Lion for a well-deserved pint. A pleasant friendly local, with usually three real ales, and an open plan feel, which still manages to give the feel of separate areas. Food used to be available for the many hikers passing by on their way to White Nancy, but sadly this has stopped. Football is popular here, with the pub sponsoring Bollington United and a selection of trophies are on show. At the other end of the pub, there is a well used pool table, whilst outside, is a large beer garden, with excellent views. A rarity for Bollington is that the pub has an ample car park, for those who do not fancy the climb up the hill.

The Queens Arms



Dropping down High Street, we come to our next point of call. Pat and Barry have run The Queens since the early

eighties, and are Bollington's longest serving landlord and landlady. In that time they have perfected the fine art of running a popular local pub. The Robinson's beers are



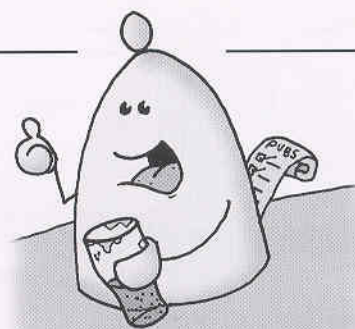
always on top form, with many regulars claiming it is the finest pint of 'Robbies' this side of Stockport, no wonder the pub has been a regular entry in the CAMRA Good Beer Guide. The pub is always kept spotlessly clean, and everyone is made welcome. There is always something going on at the Queens, with a range of teams, from pool to cribbage, and a quiz every other Sunday night. The pub lost a lot of its traditional features, which included stained glass shutters and oak panelling when it was refurbished in the 1970's. There are 'big screen' sports when the occasion arises, and an interesting, perhaps unique place to rest whilst leaning by the wall with a good pint.

The Spinners Arms

Making our way onto Palmerston Street, we find The Spinners. A popular and thriving pub, especially at weekends, where quite a young clientele are attracted and it can get a bit noisy and smoky. There were three real ales on offer while we enjoyed a few games of darts on our Thursday evening visit.

The décor is beginning to show its age, but perhaps this is all part of the pub's charm. Again, you can enjoy a game of pool, and if you don't like the music, choose your own on the jukebox. The pub is semi-open plan, but you can still find your own corner in one of its three rooms.

It is a shame that the pub sign hanging above the door does not depict the mills and cotton spinners as should be the case.



The Holly Bush

Across the road, by the bridge over Harrop Brook is the Black and White faced Holly Bush. Once inside you find a real gem. A well-kept pub, with separate rooms and its true gem, a beautifully oak panelled bar room, with stained glass and polished brasses. The pub is listed in CAMRA's inventory of historic pub interiors. The well-kept Robinson's bitters are a welcome bonus.



Upstairs, there is a pool table, and The pub will be starting with a full food menu

early in the New Year, and we wish them every success, as a pub serving food is currently lacking in this part of the village

The Dog and Partridge

Another stroll brings us to the Dog and Partridge, which in the summer months has a superb display of hanging baskets, and is a deserved winner of the Bollington Civic Society 'Bollington in Bloom' awards. Inside, a friendly pub awaits, with three separate rooms, and a bar area. There is often a real fire blazing a way, giving the pub a cosy homely feel. Many a fine pint of Robinson's bitter is downed here by the Bollington Live! Committee at our meetings when we debate the next issue of the magazine.



The Vale Inn

Moving down Adlington Road finds us at The Vale. The pub has suffered several years of closure, but is once again looking to be on the up.

Continued overleaf...

A Happy Hut!

During the war years of 1930-1945 I was first used as an army hut for the men of the British army – Nissen huts we were called then. When the war ended I wasn't used for anything special for a good number of years until in the early 1960s I was packed off to a place called Bollington. Father Thomas Osbyrne, the parish priest, had plans for me! I was put behind his church and given the splendid title of St Gregory's parish hall.

What a new lease of life I was to have! Never a dull moment from then on! Such mouth-watering hot pot suppers set out on trestle tables, whist drives and old time dancing classes to say nothing of the figures I saw in the ladies keep fit class! On bingo nights the place was so full that even a church mouse couldn't have crept in! The newly-formed social club played darts, table tennis and dominoes and I remember Christmas fayres packed with stalls and the children visiting Father Christmas in his fairy grotto. New year brought people together singing Auld Lang Syne and the St Patrick's night dances were something to behold with all the ladies dressed in something green.

Then there were the theatricals – concerts and pantomimes which were such fun with lovely music and songs, happy laughter and people working together to bring out each others gifts and talents. I have seen golden and silver weddings, 21st birthday parties, and christenings.

A few years ago I remember the golden jubilee concert for Father Harry Butters and then the 40th ordination celebration for our present parish priest Father Robert Coupe. Oh yes I have been such a happy place!

Only once have there been tears here and that was on the day Father



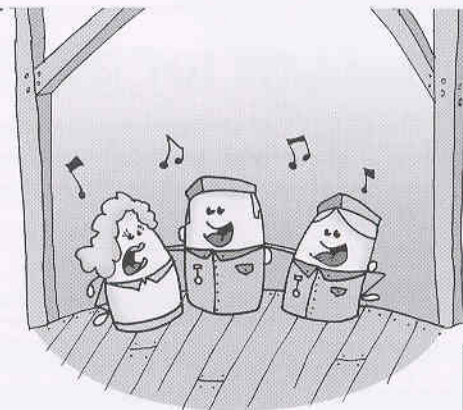
Thomas Osbyrne who brought me to St Gregory's came to say good bye. There was indeed much sadness on that day.

Now they say I'm too old with too many miles on the clock – well they could be right. Somehow the words of an old song keep coming to mind – it was the opening chorus of one of the many show performances here. In a way the song seems to link the war time spirit of my army days to the spirit of the people I have served over the years:

So am I downhearted? Not!! There will be another happy place for the people of St Gregory's and for Bollington and the community spirit will make it so.

Looking forward ...

Sadly the days of St Gregory's parish hall are numbered. Today it is used for Junior church for the children of the parish and for the occasional



parish meeting. However, with the end of one era we greet the beginning of a new era with plans for a new parish centre being approved and fund-raising to meet the costs beginning in earnest.

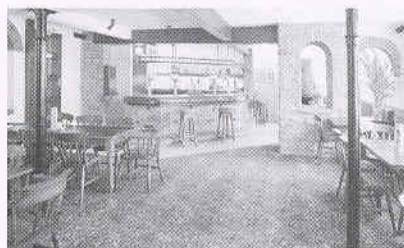
If you would like to be part of the great community spirit you might like to contribute to our 'Buy a Brick' appeal. Why don't you visit the parish website for more information: www.stgregorysbollington.co.uk/index.htm

Mary Bann



Above: Father Thomas Osbyrne, who died in 1970. He was the Parish Priest at the time that the Hut came to Bollington

Top left: One of the many shows performed in the Hut



Food is now served, and as it is not a tied house, a range of real ales is available, with usually one from the local Storm Brewery. Handy for the Recreation Ground, tables and chairs are laid out so you can watch the cricket on one of those perfect English

Sunday afternoons. The canal and Middlewood Way are also close by, so hopefully The Vale Inn can buck the trend of recent years and thrive. The pub is bright and clean, with ample car parking nearby.

In our next issue, a much longer walk is in order, around the remaining Bollington pubs: Waggon and Horses, Royal Oak, Cock and Pheasant, Middlewood Inn, Lord Clyde and the Bulls Head. **AH**

Co-operative Funeralcare
Your Local Funeral Director
National Association of Funeral Directors

25 High Street
Macclesfield 01625 422583

Caring & professional staff

- Memorial masonry
- 24 hour service
- Pre-payment plans available

www.funeralcare.co-op.co.uk

A word for our sponsors...

The support of our sponsors is valued very highly by the *Bollington Live!* team. So as a way of saying thank you we asked them to tell our readers a little bit about themselves. We featured 6 last issue and are highlighting the others here.

"Voices & Verse"

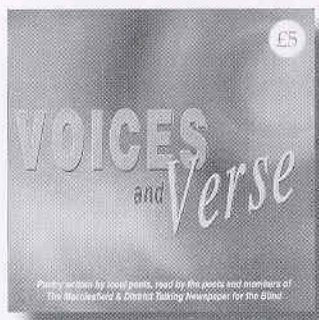
To mark the recent "Talking Newspaper Week", and to raise vital funds, Macclesfield & District Talking Newspaper for the Blind has recorded a CD of poetry written by local poets, read by the poets themselves and regular readers from the Talking Newspaper.

The 42 poems are an eclectic mix chosen to suit most tastes, and will amuse, soothe and surprise. The CD includes work by Whitbread Prize-winning poet Michael Symmons Roberts, Joy Winkler, current Cheshire Poet Laureate, the 2004 Laureate John Lindley, and Harry Owen, the first ever Cheshire Poet Laureate in 2003. "Voices & Verse" costs just £5 and is available from the Macclesfield Eye Society, 15 Queen Victoria St., Macclesfield (9am - 2pm weekdays) 01625 435283

The Talking Newspaper charity was founded 30 years ago when it was realised that although blind and partially sighted people can access National news quite easily from the radio or television, local news and issues were more of a problem. CDs and tapes of local news are sent every week to more than 200 local listeners with a visual impairment. The Talking Newspaper is run by 55 volunteers and relies on donations and fund-raising to cover operating costs. The Talking Newspaper team are very grateful to the poets in allowing the use of their work.

Further details from Lynn Hilton, Editor, Macclesfield & District Talking Newspaper for the Blind, 01625 503030 (9am - 3.30pm) or by e-mail at publicity@sisis.com

LH



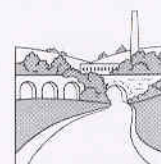
Slater Harrison & Co Ltd manufacture colour coated paper and laminated board. They supply businesses in Education, Retail, Packaging, Printing and many other fields with all their paper and board requirements.



The Adelphi Group specialise in the healthcare sector, offering services in strategic marketing, marketing and business intelligence, health and economic outcomes research and medical communications and education.



Bailey Business Park Ltd. provides both office and storage facilities in a pleasant rural environment at very competitive rates.



**BOLLINGTON
CIVIC SOCIETY**

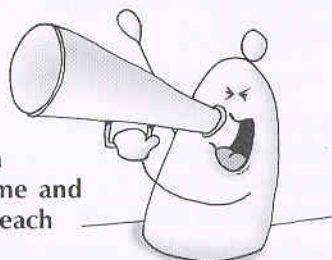
Bollington Civic Society has gone from strength to strength with the opening of the Discovery Centre at Clarence Mill. Meetings are held on 3rd Mondays each month at the Ovenhouse Lane Community Centre at 8pm. All welcome! Details on www.happy-valley.org.uk



Bollington Town Council works to represent the views of the people of Bollington, and to promote their well-being and community spirit.

Speak Your Piece...

Bollington Town Council is extending an invitation to members of the public to come and speak briefly to the full Council at the start of each monthly meeting in the Town Hall.



The Mayor will adjourn the meeting for fifteen minutes at 7.30 pm and for the same period at 8.30 pm when dealing with the planning applications on the agenda.

The response so far to this invitation has been encouraging and it is hoped more of our citizens will come to the meetings being held on the following Tuesdays: 6th December, 10th January, 7th February & 7th March.

Revival Charity Shop Open Daily
9am to 3.30pm at the rear
of the Drop in Centre
great place for Bargains !

Bollington Brass Band –
'LIVE AT THE FESTIVAL' CD
Now available from the
Town Hall price £8. each

J.A.McNULTY

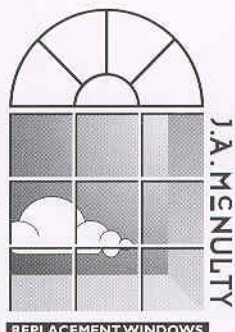
uPVC DOUBLE GLAZING Mfrs.

Windows, Doors, Conservatories
Porches, Double Glazing.
Phone or call in for a free quote
- no obligation

**OPEN FROM
MONDAY TO FRIDAY**

Ingersley Vale, Bollington SK10 5BP

Tel: 01625 574508 Fax: 01625 576248



REPLACEMENT WINDOWS

DOOLEYS

AUDIO | VISUAL

Your Hi-Fi and Video Specialist

106 Mill Street, Macclesfield (01625) 264666 or 423158
e-mail: sales@dooleys-hifi.co.uk www.dooleys-hifi.co.uk

Supplying Original Design
& Quality Printing for over 22 years

- Colour & B&W Digital copying
- Digital and Lithographic printing in-house
- Wedding, Commercial and Domestic Stationery
- Print Finishing, Binding and Booklet-making
- Posters & Promotional Material
- Word Processing and Office Services, Fax and E-mail
- Photographic Retouching, Selective Printing & Enlargements

**BOLLINGTON
P-R-I-N-T-S-H-O-P**
original design & quality printing

HUGE RANGE OF CHRISTMAS CARDS

With 12 albums and hundreds of different cards
to choose from (including many Charity Cards)
you are sure to find your ideal design

BEAUTY OF BOLLINGTON CALENDAR 2006

LOCAL VIEW CHRISTMAS CARDS

Pop in to view our unique range of Christmas
cards featuring White Nancy and local scenes.
Large range of Bollington Picture Postcards.
Limited Edition Paintings - Ideal for Christmas

t: 01625 574828 f: 01625 574025

Your LOCAL w: www.print-and-design.com PANIC printing
Stationers e: sales@bollingtonprintshop.co.uk for RUSH JOBS!
The Old Stables, Queen St., Bollington, Cheshire SK10 5PS



- No Joining Fee, No Mirrors, No need to feel self conscious
- Fully equipped gymnasium
- Membership options starting from £20.00 per month
- 10% discounts for a yearly subscription paid in full
- Fully equipped gymnasium and loose weights
- Toning tables/Sauna
- Full programme of classes at all levels
(open to non members)
- State of the art tanning cabins
- Beauty treatment room

Call in for a free no obligation assessment

The Lock Fitness Centre, Adelphi Mill, Bollington, Cheshire, SK10 5JB

Tel: 01625 575125 web: www.adelphimill.co.uk

email: thelock@adelphimill.co.uk



BOLLINGTON CRICKET CLUB 2005 SEASON

What a year for cricket! While cricket mania swept the country as our national heroes battled to win back the Ashes, our local "heroes" were battling just as hard to gain Bollington Cricket Club a place in the first division of the County League.

With a number of key players from the 2004 Cheshire Shield winning team not available for 2005, the main objective for the season had been simply to stay in Division 2.

After a distinctly shaky start, however the Bollington boys started to impress and soon found themselves in the top half of the table.

Meanwhile the defence of the Cheshire Shield was going well, with emphatic victories over all opponents right through to the semi-final stage until they crashed out to Wirral team Parkfield Liscard.

With only the league to concentrate on, Bollington kept the points coming in, until with two matches to go they knew one more good result would ensure promotion. On a grey September day Bollington triumphed at Irby to secure 25 points and a place in division 1. 2006 will see the club once again playing local rivals Macclesfield and Poynton. Congratulations to all the team!

Not to be outdone by the men, the junior section had another fantastic

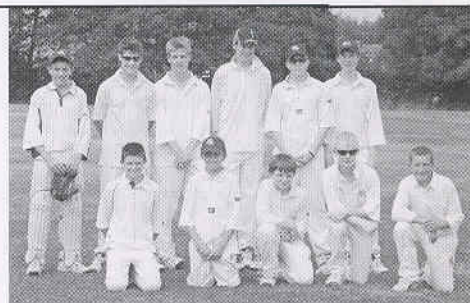
year with the U11 team successfully defending their High Peak League title, unbeaten for the entire season and winning by some margin.

The U14s won the Jones Homes League after some hard fought battles and some very convincing victories.

Youngsters from all age groups have developed both individually and as part of a team and Bollington Cricket Club are very proud of all their achievements.

The future of the junior section looks bright, as it was great to see a large number of enthusiastic under 10s at the Kwik Cricket with many gaining English Cricket Board awards.

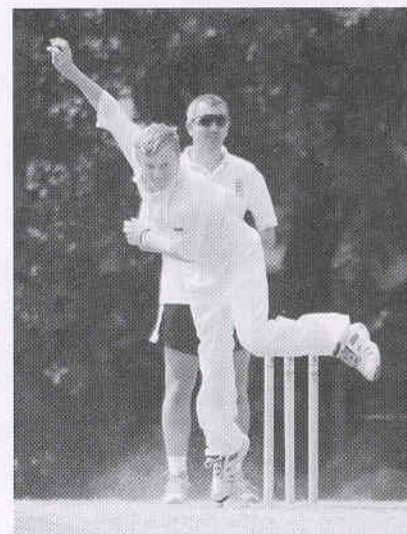
Anyone wishing to get involved as a playing member should contact the Cricket Manager, Dennis Goodwin on 01625 573756.



Above: The Bollington Under 15's
Left: Kevin Waterhouse
Below: Greg Dunne

For more information about junior membership please contact the Junior Chairman Ilona Wood on 01625 572660, e-mail woody104@hotmail.com or the Secretary, Andrea Paterson on 01625 573708, e-mail rick@gleaveave.freemove.co.uk

All contact details are on the website which can be found at www.bollington.play-cricket.com



Corporate Sponsors of Bollington Live!

Bollington Live! gratefully acknowledges the support given by local sponsors, who have enabled publication to continue into our *twelfth* year:

Mellor & Jackson
Tullis Russell Coaters
Cutlers Cleaning Supplies
Bollington Insurance

Adelphi Mill Properties Ltd
Slater Harrison
Kay-Metzeler
Bollington Civic Society

Bailey Business Park Ltd.
Bailey International Steeplejack Co. Ltd.
The Adelphi Group
Bollington Town Council

