



BOLLINGTON

Live!

Number Forty One

Winter 2007

INSIDE THIS ISSUE

A Paralympian's progress

Confessions of a clerk

The Barmaid's Banjo

Commons Sense

Christmas Food & Drink Supplement
Included with this issue

HOLMES ~ NADEN

INDEPENDENT ESTATE AGENTS

A professional and personal service, from open market appraisal to completion of property sales

- ★ Open 7 days a week
- ★ Free open market appraisal
- ★ Independent financial advice available

Bollington Office: 78 Palmerston Street, Bollington, SK10 5PW

Telephone: 01625 560535

Prestbury Office: The Village, Prestbury SK10 4DS

Telephone: 01625 828254

Marie Ann
HAIRDRESSER

9 Grimshaw Lane, Bollington

Tel: 01625 572495

Mob: 07880 665929

OAP's rates Tues & Wed

JONNY BLUE RINSE'S
"STYLERS"

123 Wellington Rd.
Bollington

GENTS HAIR DESIGN

• ALL STYLES CATERED FOR •

Tel: 01625
560819

KELICO
interiors

Kellico Furniture

Lounge & Dining Furniture
in both classic and contemporary styles
also lighting, mirrors, rugs & artwork

Upholstery Designers & Manufacturers
Re-upholstery and Restoration Specialists

Visit our unique showrooms

Canalside, Clarence Mill, Clarence Rd., Bollington

01625 560434

10% discount with Bollington Loyalty Card

BRASSINGTON'S
EST 1950
BAKERS & CONFECTIONERS

For the finest range of bread, savouries,
confectionery and sandwiches in town
- look no further than 116-118 Wellington Road.
Pass through our doorway and we promise you'll find
enough to satisfy even the most jaded palate!

116/118 WELLINGTON ROAD, BOLLINGTON
PHONE: (01625) 571100

THORNEYCROFT

solicitors

FIXED PRICE HOME CONVEYANCING

Deal direct by 'Phone & Post - No need to lose time from work
Domestic & Commercial

WILLS & PROBATE PERSONAL MATTERS
PERSONAL INJURY

ACCIDENTS AT WORK OR ROAD TRAFFIC ACCIDENTS

FOR CONVEYANCING AUTOQUOTE

www.thorneycrofts.co.uk

FREephone: 0500-344220

WEST BOLLINGTON POST OFFICE

on Wellington Road - your local car tax office

Superb Greetings Cards & Stationery

Toys & Gifts for all occasions

Children's Books & Local Maps

Major Stores' Gift Tokens

Dry Cleaning * Cash's Name Tapes

65 Wellington Road Bollington Macclesfield SK10 5HT
Tel: 01625 572378

The
Carpet
House

The Basement,
Lower Ground Floor,
Pickford Street Mill,
Pickford Street,
Macclesfield SK11 6JD.

Tel: (01625) 420583

ACCOUNTS & TAX SERVICES

CERTIFIED ACCOUNTANTS

6 Grimshaw Lane
Bollington 01625 578030
Small Business Specialists
Discounts for OAP's

Need help with your website?

Would you like to:

- Make a small budget go a long way?
- Keep your site up-to-date easily?
- Increase sales leads from your website?
- Develop a new website or update an existing one?

Please call Penny Lines, freelance marketing consultant,
to talk about your website. Your first consultation
meeting is free and without obligation.

Years of marketing experience at great rates means no nonsense!

Penny Lines,
No Nonsense Marketing, Suite 252 Silk House, Park Green,
Macclesfield, SK11 7QJ info@no-nonsense-mktg.co.uk
t/f: 01625 410681 m: 07932 158845



no nonsense
marketing by penny lines



Bollington Live! is published three times a year on a non-profitmaking basis, with free distribution to households in the town. Under the editorial banner of "**Bollington Live!** - A voice for everyone" we aim to promote local concerns. Contributions are welcome to:

The Editor, c/o Bollington Printshop, The Old Stables, Queen St., Bollington SK10 5PS

Bollington Live! is an independent publication, published in association with Bollington Arts Centre & Bollington Civic Society.

Your Magazine is now on-line:-

Latest Issues: www.bollingtonprintshop.co.uk

Historical editions: www.happy-valley.org.uk/live

Cover: Chancery Lane water trough - part of this year's well dressing.

Editor..... Anthony Holland (01625 268047)
liveeditor@happy-valley.org.uk

Editorial Team..... John Liley, Tim Neale, Tim Boddington,
Sandy Milsom, Steve Murphy, Ken Edwards
Simon Nottage, Mark Stedman

Advertising Tim Neale (01625 576397)
Mark Stedman (01625 575227)
liveadverts@happy-valley.org.uk

Distribution Janet Beech (01625 574618)
livedistribution@happy-valley.org.uk

Printed by Bollington Printshop (01625 574828)

Cartoons by Matthew Wray

Playing with the Barmaid's Banjo

Passionate about his cause; passionate about his music. David Raines at the recent 'Mind Body and Boogie' festival showed that raising awareness of mental health issues can be fun.

It would have been difficult to not notice that for the first weekend in September, Bollington became host to a wide array of music - across the sphere from classical to rock. Some superb talent was on show as well. The pubs which were involved included Acoustic Folk at the Cotton Tree, Dance at the Crown, whilst the two main outdoor stages at the Red Lion and Vale saw bands at the top of their game rocking as loud and as well as any you could pay to see in the 'big black smoke.'



Black Bart acoustic at the Cotton Tree

later at the Vale, both performing and enjoying the concurrent Beer Festival.

Following this, a trip to the Cotton Tree, for a somewhat maudlin set from Copper Kettle, and an altogether more lively performance from Black Bart, who even managed to play with the Barmaid's Banjo! She seemed very pleased with the arrangement. I caught the band again, as the headline act at the Vale that night. It was certainly a performance to remember and the appreciative audience were glad they had made the trip especially for the festival from Southampton. They and their audience were perhaps less glad about the bizarre dancing couple, one of whom had to be forcibly ejected after leaping on the stage.

It is said that it takes three years for a festival to become established. Congratulations to David and his team! Here's to next year!

A. Holland

View the Mind body and boogie 'myspace' for more.

Editorial

Shortly after the last issue of **Bollington Live!** came out, I was quietly enjoying a pint in the Red Lion. Suddenly I heard an accusatory voice... "A-ha, you're the Editor of **Bollington Live!** aren't you?" I cowered, trying to hide behind my pint of Adnams. "Isn't it about time you wrote something about the shops in Bollington?" Regaining composure, I replied, "What an excellent idea, you write something suitable, and I'll try to put it in the next issue". Sadly I am still waiting. If you think an issue needs to be covered in **Bollington Live!** please write it and send it in.

As this issue is approaching Christmas, we have decided to omit the regular weekly events from the "Dates for your Diary" pages. These have been replaced with a selection of more festive activities.

Additionally, **Bollington Live!** has been expanded to include a special supplement dedicated to food and drink in Bollington. Well done to the team who have put this together - and an apology to our deliverers, for the extra weight to carry around - I promise it won't be every issue!

Back to this issue, we have Nicholas Winterton looking back over his years representing Bollington. Nick, surprisingly has never written for us before, so that is put right this time. Roger Johnson looks back at his time as Town Clerk and considers the future for Bollington Town Council. Finally our sports page is a story of determination and an inspiration to all; former St. Gregory's pupil, Elisabeth Clegg is profiled - Bollington's Paralympian.

Anthony Holland



Steller at the Red Lion

The weather was kinder on the Saturday and I managed to visit three of the venues, firstly to enjoy Bollington's finest band-of-the-moment - Steller. An appreciative audience, even if they were a little apprehensive about leaving the immediate environs of the pub, to cross the road to the stage! The band roared through an hour-long set-list of self-penned songs, before giving way to a short set from Get Cuba with a Bass Guitarist who possessed a pair of trousers of a style rarely seen in Bollington! They could be seen



Roger... and out

If you've never visited Bollington Town Hall I recommend that you pop down to Wellington Road any weekday morning to check out what is an important part of this town's heritage; do it as soon as possible and certainly before any possible move to the Civic Hall takes place!

There you'll find an efficient, modern office on the ground floor, with the Mayor's Parlour and Council Chamber on the first floor. For such a small town, the Chamber, with its solid oak furniture, oak panelling and pictures of past mayors gazing down from the walls is most impressive. Meetings of the Town Council which are held there, are open to the public and are suitably dignified.

Each meeting begins with Councillors standing whilst the Mayor, the Deputy Mayor and the Mayor's chaplain, all preceded by the Town Clerk, parade into the Chamber. At my first meeting I proudly led this solemn procession into the room, aware that all eyes were on the new Clerk. I safely negotiated the step up onto the dais where the official party sits, turned to glance at the Councillors - and promptly fell head-over-heels at the second step, much to the amusement of the then Mayor John Kershaw along with the rest of the Council!

Since that day, life as your Town Clerk has been an ongoing series of ups and downs, at turns both fascinating and frustrating (often) - and occasionally immensely satisfying. It has been particularly rewarding to see a large number of changes and improvements to the Town during my Clerkship. Many of these have been down to the implementation of the Parish Plan ("Your Bollington!") which has been chaired with great enthusiasm by Michael Burdekin. This has led, either directly or indirectly, but always with the full support of the Council, to new litter bins, new notice boards

and maps, new signposts, new benches and the completion of the "Historic Triangle" (based around Water Street/High Street) conservation project.

Bollington also now has its own Council newsletter (the "Bollingtonian") which is distributed to every home in the town; the Council also produces a monthly "What's On" leaflet and

with members of the Festival Choir to lead a couple of thousand townsfolk in "Carols Around the Tree". To think that only a few years ago we never even bothered to close the road!

The "Free Christmas Trees" scheme for traders which the Town Council introduced a couple of years ago has also been a great success; last year some three dozen trees were distributed to local shopkeepers and publicans in an effort to brighten the town up during the festive period.

Less successful was the Council's recent attempt to generate interest in a mini "Food and Drink" festival for the town, which resulted in just two traders expressing an interest in such a project. Hopefully something may be organised to run alongside the Bollington Festival in 2009.

The Town Council itself has changed considerably during the past 3½ years, not least because there are now just 12 Councillors, 4 per ward, instead of the original 15. Perhaps more significant is the fact

that in that time one third of the Council has been co-opted rather than having been elected through the ballot box - a situation which must change if the Council is to achieve Quality Parish Status, with all the accompanying extra powers which such a qualification brings.

In May next year the whole Town Council is up for election and I believe it is incredibly important that these elections are fully contested in every ward. In 1995 there were 10 candidates standing for just 5 places in Central Ward, and an amazing 12 candidates for the same number of places in East Ward. However, by 2004 - just 9 years later - only 11 candidates stood throughout the whole town!

It's possible that this trend is indicative of a wider apathy towards politics generally, but never has it been more important to become involved in what goes on in your community.



Three wise monkeys: former Clerks Roger Johnson and Ruth Stubbs, with new Clerk Terry Crosswell.

employs its own Community Police Support Officer (Nick Millward).

The Council has eradicated much of the graffiti which was defacing our town (an on-going battle!) and will soon be introducing specific "No-drinking Zones" in an attempt to control excessive anti-social behaviour. Additionally, Bollington now has its own well-dressing ceremony, its allotments have a water supply and the Town Council established a "Dr. John Coope Memorial Library" to commemorate the town's most illustrious son.

Perhaps the most satisfying aspect of the job has been to oversee the growth in the celebrations on Christmas Eve. This has grown from a few hundred people gathered around the Town Hall steps, to last year's event when the Senior and Junior Brass Bands combined



Bollington Town Council
TOWN HALL
 This Town Hall was
 opened for the use
 of the Community by
 the Rt. Hon.
 Viscount Leverhulme
 on 18th April 1980

Bollington Leisure Centre



...making a Splash!

With central government seemingly committed to a greater say for "grass-roots" democracy there could not be a better time to put your name forward as a candidate - and if you don't fancy standing for Council at least take the trouble to use your vote!

As I write this piece, the whole future of local government is under review. As someone who has had to try to work within the present system I have to say it's in urgent need of drastic reform. Certainly the proposal to remove one layer of bureaucracy can only be an improvement, but understandable concerns remain about the ability of the new "East Cheshire" authority to deliver many of the important strategic services such as education. Time will tell, no doubt.

It has been a real pleasure serving as Town Clerk for past 3½ years; having a different boss (the Town Mayor) each year has not been easy, but I have met many interesting people during that time, many of whom, like the Councillors, are actively committed to improving life in Bollington. There is a genuine warmth and friendliness to the town which I shall miss and I know that you will accord my successor, Terry Crosswell, the same understanding and encouragement which you've shown me.

As for myself, I intend to enjoy retirement: I hope to be very much involved in Bollington Festival 2009; I'll continue to play golf for the Poachers Inn Golf Society (Yes, we are called PIGS!); I'll still be involved with our amazing Brass Band - and I hope I'll still find the time to continue visiting many of Bollington's wonderful public houses!

**Roger
Johnson**



Upper left:
Town Hall drawing by Dean Entwistle,
presented to Roger upon his retirement.

Above: Terry Crosswell - our new Town Clerk

In the early 1970s a research project showed that local people put a swimming pool at the top of their 'most wanted' list. Bollington got itself organised and extensive fundraising and campaigning finally culminated in the opening of a community swimming pool in June 1977.

Over the following thirty years, Bollington Leisure Centre has continued to enhance the facilities and continued its commitment to improving our fitness and well-being.

Bollington Leisure Centre is a registered charity, run independently of the local authority, indeed, initially Macclesfield Council were totally opposed to Bollington having their own swimming pool, with Macclesfield's councillors suggesting that Bollington children could easily make their own way to the new Macclesfield Leisure Centre at Upton Priory.

Shortly after the success of the swimming pool, squash courts and a 'health studio' were added, but in 1985 financial difficulties forced the Centre to close for a month. Would Bollington lose its hard fought and won leisure centre? No - after a reorganisation and re-financing the centre re-opened and has never looked back. A national lottery grant of £116,000 in 1995 allowed the centre to add proper changing rooms, kitchen, and a dance studio amongst other improvements.



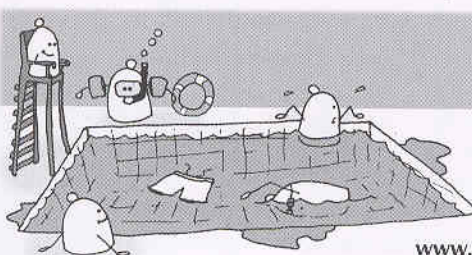
Swimming is still the most important part of the Leisure Centre's activities. On an average week more than 2000 people take swimming lessons. There are over 40 qualified instructors who, over the years have turned the Centre into a centre of excellence for

swimming, gaining the prestigious Amateur Swimming Association 'Aquamark' award. When it was awarded in 2003 it was one of only 4 pools in the country to hold the accreditation.

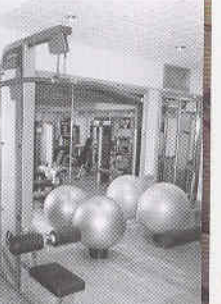
New gym equipment has recently been installed along with new visual and sound systems. Additionally the Leisure Centre has now been given planning permission to further extend the gym. This will incorporate many "green" features, including a translucent rear wall, giving natural lighting in daylight hours and incorporating comfort cooling and ventilation with the latest energy saving technologies. A lift for disabled users will also be installed, along with an upgrade to the changing rooms.

The Leisure Centre is yet another example of what makes Bollington special. Congratulations from **Bollington Live!** on a successful 30 years! Here's to the future!

T.Neil



www.bollingtonleisure.co.uk



Say you want a Revolution...

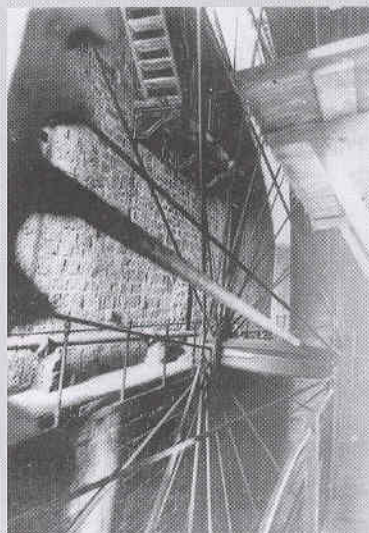
Bollington Carbon Revolution is a voluntary group of local residents dedicated to reducing the carbon footprint of our town.

They formed because they wanted to make a difference and empower our community to take action against climate change and in September celebrated their one year anniversary.

September also saw the launch of a £200* cash back scheme for Bollington householders who make energy efficiency improvements to their homes, brought to you in partnership with Macclesfield Borough Council. For more information on how to reduce your carbon footprint and obtain a copy of the cash back application form, go to their website, or pick up the form from the Bridgend Centre, Library or Town Hall.

There are also a series of events planned over the coming months. Please see 'Dates for your diary' in the centre pages of this issue for details.

Come along to show your support and learn how you can make financial savings and reduce your carbon footprint.



Ingersley Vale Mill water-wheel; once the largest in mainland Britain

Other activities which have taken place in their first year include an art and poem competition with the local primary schools and a stall at the Transport Extravaganza. In the future they plan to raise funds for a feasibility study of the river to see if they can bring the water-wheel back to Bollington to generate our own green electricity.

If you have a story to tell about how you have made carbon savings in your lifestyle, please get in touch via the website.

Nicola Riley

** Qualifying improvements are: Loft insulation, cavity wall insulation and installation of high energy condensing boilers. Only applies for work carried out between 1st September 2007 and 31st March 2008. Scheme is limited to 250 households on a first come first served basis.*

www.happy-valley.org.uk/revolution

Your Bollington?

The Parish Plan, 'Your Bollington', was published in December 2004 and represented the results from consulting Bollington residents on how the Community saw itself developing over the next few years.

The Plan has had considerable influence on the Town, Borough and County Councils. It made 52 individual recommendations, 35 of which have either been completed or made progress. Successful projects include upgrading of the Historic Triangle, improvements to signage, litter bins and the tourist map, improvements to parking at Pool Bank and the adoption of Supplementary Planning Guidance by the Borough Council. A detailed study of parking problems started in September.

After nearly three years, it is now time to update the Plan and for residents to express their views on any

new recommendations for future improvements. With imminent changes in the structure of Local Government and development of more responsibility to local communities, Bollington must have an up-to-date Plan to inform the Town Council on the wishes of the community.

New volunteers are required to take the work forward and to help shape the future of our Town. A launch meeting was held on Monday 1st October.

If you are interested in helping please contact Terry Crosswell at Bollington Town Hall on 01625 572985 or Michael Burdekin at mburdekin@aol.com.

A summary report of overall progress on the Plan so far can be seen at Bollington Town Hall, the Library, the Bridgend Centre or the Discovery Centre. It may also be viewed online at www.happy-valley.org.uk

Michael Burdekin

Co-operative  Funeralcare
Your Local Funeral Director
National Association of Funeral Directors

25 High Street
Macclesfield 01625 422583

Caring & professional staff

- Memorial masonry
- 24 hour service
- Pre-payment plans available

www.funeralcare.co-op.co.uk

Cars & Vans 4U

Looking for a new car or van?
Let us help you:

- Lease Purchase
- Contract Hire
- Finance Lease
- Outright Purchase
- Van Hire

www.carsandvans4u.co.uk
Macclesfield Tel: 0845 2300 771



Christmas Specials!
Holiday Package - ONLY £50
Luxury Facial, Manicure, Pedicure, Brow Shape

Other Packages Available:

A: Full body Exfoliation, Spray Tan, File & Polish (Hands & Feet) **ONLY £48**

B: Luxury Manicure & Luxury Pedicure **ONLY £35**

C: Mini Facial / Eyelash Tint, Eyebrow Shape & Weekend Nails **ONLY £40**

Gift Vouchers Available

Tel: 01625 560650
62 Palmerston Street, Bollington



Hollin Hall

Jackson Lane, Kerridge
Nr. Bollington, Cheshire SK10 5BG
Tel: 01625 573246 Fax: 01625 574791

XMAS PARTY BOOKINGS NOW BEING TAKEN

Friday 11th January	Saturday 12th January
Murder Mystery £22.50	Xmas Dinner Dance £16.50
3 Course dinner & Murder to Solve	3 course dinner & dancing
Friday 25th January	Saturday 2nd February
Murder Mystery £22.50	70's & 80's Dinner Dance £16.95
3 Course dinner & Murder to Solve	

price per person

Lunches Served Every Sunday 12.00 - 2.00pm

£13.50 per person for a 3 Course traditional Sunday Lunch

To make a reservation or for further details, please contact us on 01625 573246



J.J.J. HEATHCOTE LTD.

*From our own LOCAL FARMS
for Beef Pork & Lamb*

Palmerston Street, Bollington: 572202

114 Wellington Road: 573172 5 Fountain Place, Poynton: 872154

RED OAKS FARM BED & BREAKFAST



4 STAR Silver Award B&B

Quality Lamb & Beef

**traditionally reared
on the hills of Kerridge**

**Half or full Lambs, cut, labelled
& ready for the freezer**

FREE LOCAL DELIVERY

To order, or to book accommodation

Phone: 01625 574280

bb@redoaks.go-plus.net www.redoaksfarm.co.uk

phill swindells
photography

Portrait photography
in your home

email: phill@phillswindells.com

tel: 07973 203 213

from £135.00 inc vat

DOOLEYS DIGITAL WORLD

**for the best
Flat Screen TV & superb Hi-Fi**

106 Mill Street, Macclesfield (01625) 264666 or 423158
e-mail: sales@dooleys-hifi.co.uk www.dooleys-hifi.co.uk

JNR
CONSTRUCTION



**Offering the complete local building service
Patios - Extensions - New build**

JNR CONSTRUCTION
12 Longrow, Lowerhouse, Bollington,
Macclesfield, Cheshire, SK10 5HN
M: 07909 685264 T: 01625 575996
E: jr2006@btinternet.com
www.jnrconstruction.co.uk

JONES NEWS

61-63 WELLINGTON ROAD, BOLLINGTON

Tel: 01625 573733

Opening Hours:

Mon-Fri: 5.30 - 18.30

Sat: 6.00 - 19.00

Sun: 6.30 - 14.00



*We also stock a full range of
GROCERIES, SANDWICHES & PIES*



BOLLINGTON

Live!

November

Friday 2nd 8.00pm

Comedy Club. Over 18s only

Tickets £8. Tel: 560774

Saturday 3rd 8.00pm

Bollington Chamber Concerts

Viola Quintet from the NCO

£12.00, £6 Conc. Tel: 560355 / 575287

Friday 9th 8.00pm

Bollington's Carbon Revolution

Nicola Riley talks about a low carbon future. £5/£3 Pay at door

Nov. 11th - Dec 16th

A Splash of Silk

Small handmade items will be for sale.

Open Sundays 2-4 & during other events

Saturday 17th 2.00pm

The Library Theatre Touring Company

Wind In The Willows - Family Musical

£6 (adult) £4 (child) £15 (family of 4)

Tel: 573413 to book

Saturday 17th 8.00pm

Jazz at the Centre - New Orleans Heat

Tickets £8 Tel: 574410 to book

Sunday 18th 7.30pm

Fifty Years of the Lovell Telescope

Dr Ian Morison unlocks the secrets of our Universe. £5/£3 Pay at door

Friday 23rd 8.00pm

LS Lowry - A Visionary Artist

Art historian and author Michael

Howard. Tickets £5/£3 Pay at door

Sunday 25th 2-6pm

An Enemy of the People

The concluding session of our in-depth look at this play.

BOLLINGTON

Arts

CENTRE

December

Saturday 1st 8.00pm

From Here to Absurdity Part2

Richard Kelly and his Edinburgh Festival

show. Tickets £8 Tel: 574410 / 575287

Sunday 2nd 4.30pm and 7.30pm

Bollington Festival Music Theatre

Creepy Tales From Cesky Krumlov by

Donald Judge £6/£3 T: 0161 427 2870

Friday 7th 8.00pm

Comedy Club - Christmas Laughter

Tickets £8 Tel: 560774 (Over 18s only)

Saturday 8th 8.00pm

Jazz at the Arts Centre

TJ Johnson & his Band £8 Tel: 574410

Tuesday 11th 7.30pm

Boll. Festival Choir - Messiah for All

£5/£4 students (inc. Tea & mince pie)

Proceeds to The Rossendale Trust

Saturday 15th 8.00pm

Bollington Chamber Concerts

The McFarlane Quartet

£12/£6 conc. Tel: 560355 / 575287

January 2008

12th-19th

Bollington Festival Players

Old Mother Hubbard - Pantomime

For more details, ring 875326

Friday 25th 8.00pm

Comedy Club (over 18s only)

Tickets £8 from 560774

Saturday 26th 8.00pm

Jazz at the Arts Centre

Tickets £8 Tel: 574410

Sunday 27th 7.30pm;

Tim Boddington: an illustrated talk

Journeying down the Rivers Rhine, Main and Danube. £5/£3 Pay at door.

February

Friday 1st 7.30pm

Robert Lloyd Parry is M.R. James in

Oh! Whistle (visit web for details)

Saturday 2nd 8.00pm

Bollington Chamber Concerts

The Heath Quartet with Timothy Orpen

(clarinet) £12/£6 Tel: 560355 / 575287

Friday 8th 8.00pm

Well Dressing for Beginners

An illustrated talk with Janet Beech

Tickets £5 / £3 Pay at door

Friday 22nd

Bollington Carbon Revolution

Al Gore's film "An Inconvenient Truth".

Look out for the posters in the New Year.

Saturday 23rd 8.00pm

Jazz at the Arts Centre

Tickets £8 Tel: 574410

Friday 29th 8.00pm

Comedy Club (over 18s only)

Admission £8 from 560774

See the Arts Centre leaflet or visit the website for more details and events.

www.bollingtonartscentre.org.uk

email: bollyartscentre@btinternet.com

For details of daytime classes at the Arts Centre, ring 01625 574410

NEW EVENT EVERY THURSDAY

Drama Classes with Kalini Kent
Arts Centre 4.00-7.00pm (Tel: 261000).

Monday 3rd December

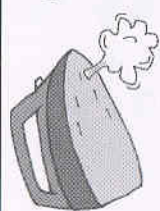
CAMRA EVENT (Campaign for Real Ale)

Red Lion at 8:00pm, **Crown** at 8:45pm,

Church House at 9:30pm **Poachers** at

10:30pm.

Quality Cleaners



Launderette & Drycleaners

Open 7 days a week

Ironing and

Service Washes

Free Easy Parking

Tytherington Precinct

Tel: 01625 423556

www.bollingtondancing.co.uk

**Dance Classes, Private
Tuition & Social Dances**
(Ballroom/Latin, Salsa, Jive etc)



Richard: 07813 310398
info@bollingtondancing.co.uk

Dates for your Diary

Christmas Events

St Christopher's - Pott Shrigley

Sunday 2nd December
Holy Communion, 8:30am,
Christingle, 10:45am

Sunday 16th December
Holy Communion, 8:30am,
Morning Worship, 10:45am,
Carols by Candlelight, 6pm

Sunday 23rd December
Holy Communion, 8:30am,
Carols by Candlelight, 4pm,
Carols by Candlelight, 7pm

Monday 24th December:
Midnight Communion Service, 11pm

Christmas Day:
Family Communion Service, 10am

St Gregory's - Bollington

Sunday 23rd December 3pm
Town Christmas Service - Churches together
in Bollington Carol service hosted by St
Gregory's

Sunday 23rd December 6pm
Carol service & Benediction by candlelight
(mince pies & mulled wine served afterwards)

Monday 24th December
Midnight Mass

Tuesday 25th December
8.30am Dawn Mass
10.30am Family Mass with enactment of the
Christmas story by the children

St Oswald's Church - Bollington

Sunday 9th December 7:30pm
Festival Choir Christmas Concert
5 Mystical Songs-Vaughan Williams +
Christmas Music. Tickets £8/£4 - 420615

Church House Inn, Bollington

Sunday 9th December:
Carols by Candlelight Service, led by the
Rev. John Buckley, 5:30pm

Bollington Christian Life Church

Saturday 15th December
Christmas Quiz! & Raffle
6:00 - 9:30pm Tickets: 574224 / 575324
£2.50 / £2.00. All money raised will be given
to the NSPCC & NCDS.

Bollington Town Hall

Monday 24th December
Carols Around the Tree
With Bollington Brass Band Bollington
Town Hall 6pm

Kerridge Ridge & Ingersley Vale Project EVENTS

All activities start at 9.45am at the Volunteer Barn, Savio House unless stated

Volunteer Days

Meet at the Volunteer Barn 9.45am
Fri 2nd Nov. Woodland Management
Fri 9th Nov. Bird-Box Hanging
Fri 16th Nov. Tree/Hedge Planting
Fri 23rd Nov. Tree Planting
Fri 21st Dec. Christmas Task

Training Courses

Sat 10th Nov. Woodland Management
Sat 24th Nov. Lichen Identification
Fri 7th Dec. Tree Pruning (part 1) a.m.
Emergency First Aid p.m.
Fri 14th Dec. Tool Maintenance
Sat 15th Dec. Bird Identification

For more details call Nick Martin on 560475
or 07764 655669 or visit: www.kriv.org.uk

January 2008

Most Fridays Hedge Laying for
Beginners

OTHER EVENTS

Fridays: 2nd & 30th November 2.15pm.
Rhymetimes at Bollington Library:
Stories & rhymes for small children and
their parents/carers

Wed. 14th - Sat. 17th November
"Showtime"
Bollington Light Opera Group - Civic Hall

Sunday 2nd December
Winter Tree Wander
Learn about our identifying our trees
on a short walk along the Middlewood
Way 10.30-12 noon Rangers Office
Adlington Road (573998)

Bridgend Centre Events

Thursday 22nd November
60s Disco Evening with Chilli Supper
7.30pm. Bar. £7.00

Monday 10th-24th December
The Bridgend Bottle-Bola
10am - 4.30pm. Donations appreciated.

Tuesday 31st January
Who wants to be a Millionaire? Night
7.00 - 10.30pm, Bar. £5.00 Tickets in
advance. Telephone 576311

At School...

DEAN VALLEY

Mums and Tots group, Thursday afternoons
from 2 - 3pm, refreshments provided. Contact
572767 for full details.

Come and meet Father Christmas! The
usual exciting stalls will be available at Dean
Valley School's Christmas Fair, on Friday 30th
November from 6-8pm. All welcome.

St. GREGORY'S

Christmas Fayre - please visit the school
website for full details at: www.rc.net/shrewsbury/stgregorys/

POTT SHRIGLEY

Christmas Fayre - please visit the school
website for full details at: www.pottshrigley.school.cheshire.org.uk

Remembrance Sunday

Sunday 11th November
Service 10.55am at the Memorial Gardens.
Parade assemblies 10.15 am at Kay Metzlers
Car Park (01625 572985)

Bollington Royal British Legion Annual
Concert with Bollington Brass Band &
Macclesfield Male Voice Choir
Tytherington High School 7.30pm
Tickets £6 (575016)

Bollington Discovery Centre Opening Times

Wednesday	Saturday	Sunday
1.30-4.00pm	11.00-4.00pm	11.00-4.00pm

Some of the historical photographs in **Bollington Live!** are provided by the Civic Society and can be viewed along with thousands more at the Discovery Centre. The Discovery Centre is run entirely by volunteers under the auspices of the Bollington Civic Society who hold monthly meetings. The Society meet at 8.00pm on the third Monday of each month (not December) at Ovenhouse Lane Community Centre.
www.happy-valley.org.uk/civicsociety www.happy-valley.org.uk/discover

Palmerston Travel

Independent Travel Agents

- Choose from a wide selection of Major and Specialist Tour Operators
- Many brochures not available in multiple agencies
- Business Travel
- Specialists in tailor-made arrangements
- Discounted Worldwide Air Tickets

We are here to help you to make an informed choice in respect of your Travel Arrangements

**REAL CHOICE - REAL VALUE
REAL PEOPLE**



Fully ABTA bonded



Palmerston Travel

15 High Street, Bollington, Macclesfield, Cheshire SK10 5PH

Tel. 01625 574448 Fax. 01625 575926

BOLLINGTON Veterinary CENTRE

**24 HOUR
SERVICE**

Consultations by appointment

Mon: 9-11am 2-3pm 4.30-7pm Thurs: 9-11am 2-3pm 4.30-7pm
Tues: 9-11am 2-3pm 4.30-6.30pm Fri: 9-11am 2-3pm 4.30-6.30pm
Wed: 9-11am 2-3pm 4.30-6.30pm Sat: 9-12.30pm

Middlewood House, Grimshaw Lane, Bollington, Cheshire SK10 5JB

Tel: 01625 572999



BOLLINGTON LEISURE CENTRE



Fully Equipped Gym & Fitness Centre
20metre Swimming Pool

Swimming Lessons for 3 year olds to Adults
Health Centre with Sauna and High Pressure Sunbed
Beauty Treatments, Massage, Reflexology and Chiropody
Aerobics and other Fitness Classes
2 High Quality, Competition Squash Courts
Children's Softcentre
Fully Licensed Bar and Function Rooms

HEATH ROAD, BOLLINGTON, MACCLESFIELD, CHESHIRE SK10 5EX

TEL: 01625 574774 FAX: 01625 574199

WEB: WWW.BOLLINGTONLEISURE.CO.UK E-MAIL: RECEPTION@BOLLINGTONLEISURE.CO.UK

M. CHADWICK



NEWSAGENTS & LOCAL LOTTERY AGENTS



Home delivery of Newspapers & Magazines Seven days a week

70 Palmerston Street

Tel: 572306

www.chadwicksnewsagent.co.uk

Chris Plant Dental Lab DENTURE REPAIRS

2nd Floor, Adelphi mill, Grimshaw lane, Bollington
Tel. 01625 560881

J.A.McNULTY

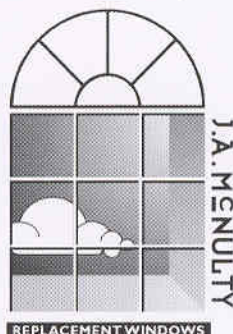
UPVC DOUBLE GLAZING Mfrs.

Windows, Doors, Conservatories
Porches, Double Glazing,
Phone or call in for a free quote
- no obligation

**OPEN FROM
MONDAY TO FRIDAY**

Ingersley Vale, Bollington SK10 5BP

Tel: 01625 574508 Fax: 01625 576248



REPLACEMENT WINDOWS

**michael
HART
& COMPANY**

**CHARTERED SURVEYORS
LAND and ESTATE AGENTS
AUCTIONEERS and VALUERS**

2 Henshall Road Bollington Cheshire SK10 5HX
telephone Bollington 01625 575578
fax Bollington 01625 576713
e-mail info@michael-hart.co.uk

FREE Pre-sale valuations & advice
Full property letting & management service
All types of surveys and valuations undertaken
Independent mortgage advice

www.michael-hart.co.uk

Also at: 36 Park Lane Poynton Cheshire SK12 1RE telephone 01625 876331



**The Crown
Bollington**

A Traditional Pub with a Modern Feel!

96 Church Street, Bollington

- Real Coal Fire
- Patio and Beer Garden
- Views of White Nancy

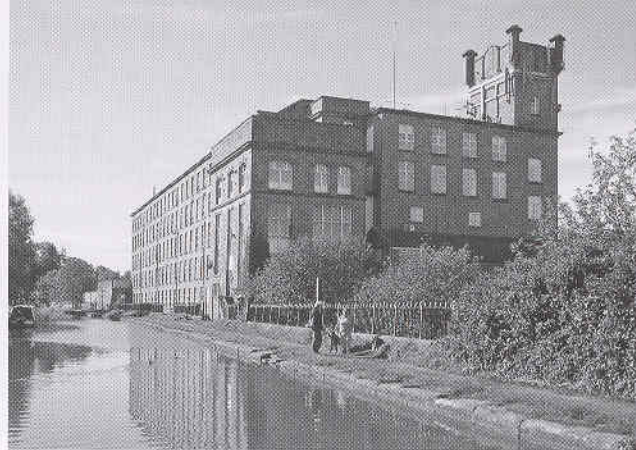
Tel: 01625-268409

BEASDALES

22 HIGH STREET, BOLLINGTON, CHESHIRE SK10 5PH

Telephone: 01625 575058 e-mail: beasdales@ntlworld.com

Simply a Great Little Restaurant. Family Run. Est. 10 Years.
Excellent Food & Wines. Relaxed & Informal Atmosphere
Please ring Jonathan or Maria for more information



A Tale Of Two Brothers...

... More Change At Th'mill

Ken Edwards continues his history of the Adelphi Mill from the previous issue of Bollington Live! Here he tells the more recent story, from 1945 to the present day.

The Adelphi Mill, managed by the fourth generation George Swindells, continued to spin artificial fibres after the war. "We started with yarn for parachutes and now it's yarn for stockings - we make money from both," the last George Swindells said. The late forties and fifties were good years for trade and the oldest generation of Bollingtonians remember them still with great pride. The Adelphi, Clarence and Waterhouse Mills with the Swindells and Olivers in charge, along with the support of the Fine Spinners Association, provided everything a family might need; steady work, an active social life, sport and recreation. August 31st 1946 saw a triumph for the Adelphi Works fire team who won two prizes in an annual sports competition at the Parkside County Hospital in Macclesfield. The Adelphi cone-winders enjoyed a trip to the Menai Bridges on August 20th 1950, stopping at the Bowlers' Arms in Warrington on the way back. The Adelphi Bowlers enjoyed a great triumph in 1950 as they won the Lee Trophy for the sixth time with colleagues from the Clarence.

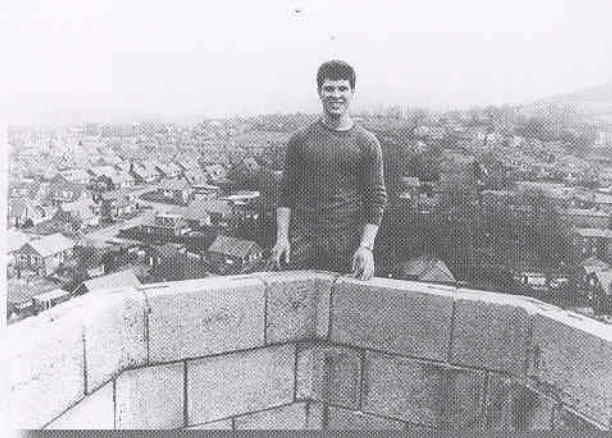
Even with the early switch to man-made fibres during the war, the Adelphi faced tougher and tougher overseas competition. From its high-point in the mid nineteenth century when 1200 people were employed, new and efficient machinery as well as competition reduced the workforce, so that by 1964 only 238 people were employed.

The Swindells family sold out to Courtaulds in that same year.

The three-day-week in 1973 and power cuts in 1974

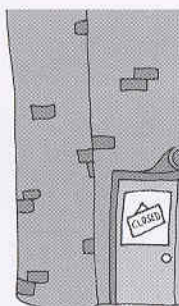
interrupted production and Courtaulds decided to close the mill. The sad day

came on 30th November 1975 when the spinning machines stopped for the last time. The final 235 workers at the Adelphi Mill left the mill never to return. 117 years of continuous fibre spinning had come to an end. The last memories of spinning at the Adelphi are held by those people still alive who worked there. They remember the noise and heat with nostalgia but little regret that those conditions now belong to a vanished world. This world of work now holds its own



View from the top of Adelphi mill chimney top - Was this you? - if so, what, why and when?

mysteries. The meanings of the old job names have been lost; Tom Marsden, 'overlooker uptwisting' or John Hall, 'conewinding' both of whom worked in the Adelphi in May 1953. What did they do exactly?



But all was not lost. An enterprising company called BelProp took over the mill and began to develop the interior for smaller individual businesses. By

1986 they had established offices on the fourth floor; the rest of the building was adapted by using stud partitioning. A fitness centre, Body Machine, was in the extension. They rented the top

floor to Adelphi Mill Communications. Gradually the mill was coming back to life. A hotel was created briefly in the south part using the main entrance and a pub 'The Barge' opened for a few years. Many Bollingtonians remember both, but neither flourished and the only such service left is the café that serves the workers from the varied businesses that use the modern mill and passing trade from the canal.

Today Adelphi Mill Properties run a thriving business. The large car park is full of workers' and customers' cars. Now companies have mysterious purposes not always apparent from their titles. We can work out 'NATIVE born b2b Marketeers' and 'Adelphi Fashion Studios' who both occupy the Third Floor at the Adelphi, but what about 'G-Tek Systems' on the first floor or 'Troy UK' again on the third? Is one part of the intelligence services? Does the other organise archaeological holidays?

As we look at this magnificent building today we can be thankful that it has supplied a working and earning space for the people of Bollington and beyond for 151 years. Congratulations and thanks to the entrepreneurs who have made that possible over the years. Long may they, and the building, continue to do so! **K. Edwards**

NB: Ken Edwards welcomes corrections to inaccuracies and particularly would welcome information and reminiscences of the Adelphi Mill on 01625 571126 or ken@molepolole.freemove.co.uk.

For details of the huge variety of businesses now operating from the mill, log on to: www.adelphimill.co.uk

Every picture tells a story!

Bollington has a wealth of creative talent, with many professional artists, writers and musicians living and working here. There are also many other enthusiastic and talented amateurs gaining inspiration from the village and surrounding landscape. Meet a few of Bollington's visual artists and creative writers and discover how you can become involved in the creative arts.

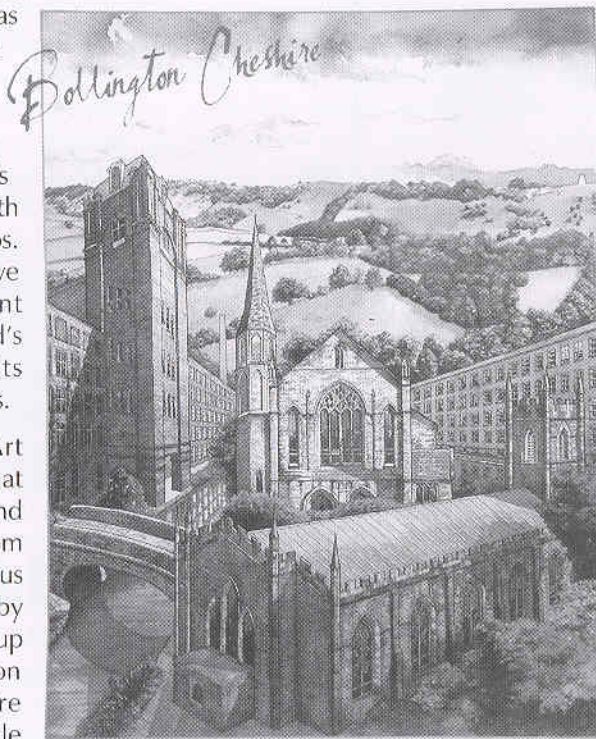
Dean Entwistle, a young, self-taught artist and illustrator has worked for publishers and design companies. Inspired by the local countryside he has produced a poster of Bollington, (pictured), which is a striking arrangement of Bollington's towers and spires. Dean has received support from the local community and is especially grateful to local butchers, Heathcote's, where, he observed, locals can buy works of art with their sausages and chops. Bollington businesses have proved to be excellent patrons of the arts; Belfield's window often exhibits paintings from local artists.

Bollington's thriving Art Group meet on Mondays at 7.45pm at the Civic Hall and on Wednesday at 1.30pm at the Arts Centre. Various techniques are taught by different artists and the group holds an annual exhibition of their work. If you're interested in creative textile art, then check out Ann Ford, who runs creative embroidery classes at the Arts Centre; her students have produced some stunning work which has been shown in the Centre. Ann, originally a keep-fit and dance teacher, took up embroidery and silk painting and was immediately hooked. She has exhibited and sold her work in and around the North West. She began classes in Bollington after completing a City and Guilds qualification and her classes have proved very popular. The Monday class is now so full she is planning another one on a Thursday. "Teaching gives me enormous satisfaction," said Ann. When talking to her students it is also evident that she inspires others.

The Arts Centre bar area often hosts art exhibitions including photographic art and pottery. In November you can

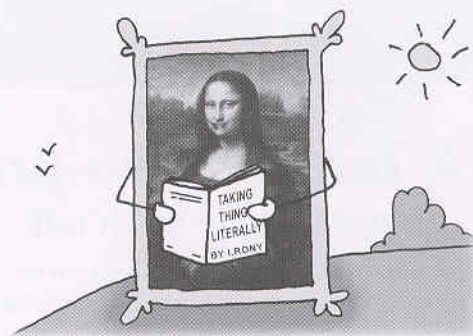
enjoy work from a Cheshire group of silk painters.

The visual arts were well represented at the last Bollington Festival, with a local artists' trail attracting a great deal of interest. During the next festival



it is hoped to repeat this and Emma King, herself a local artist and teacher, is leading an enthusiastic group of local people, as part of the Festival organisation. She would be happy to hear from anyone interested in contributing to this team, whether you are a professional artist, amateur or just interested in the visual arts.

The literary arts are also alive and kicking in Bollington. Michael Symmons Roberts, Bollington's own Poet Laureate, won the Whitbread Prize for Poetry with his collection, 'Corpus.' He has promoted poetry in Bollington by organising readings from contemporary



poets as well as reading his own lyrical and thought-provoking poems.

Bollington is also home to local writer, Nik Perring, a young working author, who has spent much time over the past couple of years leading writing workshops and visiting schools. "Meeting and working with children from Bollington and Rainow schools has been terrific and something I hope to continue," he said.

One result of running these workshops has been the opportunity to run a writing group at the Library. This occurs every Tuesday from 5.30pm until 7pm at a cost of £3.50 and all abilities are welcome. Nik's novel for 6-10 year olds, 'I met a Roman last night, what did you do?' is available from all good bookshops.

If you want to try creative writing within a supportive group, join Nik at the library or come along to the Bridgend Centre (formerly the Drop-In Centre) on Wednesday mornings at 10.30am to the Creative Writers' Group. Both groups have joined forces for evenings of poems and pints at The Church House Inn and the Library Group have recently published their first collection of stories and poems.

A Literature sub-group of the Bollington Festival committee has had a preliminary meeting led by Josie Spinks who would like to hear from anyone interested in promoting Literary events

at the next Festival.

As you can see there's plenty going on, so take your pick.
S. Milsom



Members of the Library Writers' Group

<http://nikperring.blogspot.com>
www.bollingtonartscentre.org.uk

Sir James Chadwick - Discoverer of the Neutron

Bollington is known for its generations of hard-working people who collectively created this corner of the cotton industry with perhaps only Samuel Greg being notable by name for his contribution. But there was one son of Bollington whose brilliant mind certainly helped to change the course of world history - James Chadwick (1891 - 1974).



Chadwick became this country's leading physicist whose discovery of the neutron, a component of the atom, led to the practicality of the atomic bomb. This year marks the 75th anniversary of his experiment to prove the existence of the neutron, in 1932. He was awarded the Nobel Prize for Physics in 1935, and in 1945, a knighthood for this work.

He was born in a cottage on Clarke Lane and went to Bollington Cross School, where today a blue plaque reminds us of his origins and achievement. His father was a Cotton Weaver and his grandfather a Hand Loom Silk Weaver. Physics was a bit of a mistake - when this brilliant scholar went to enrol at Manchester University, aged only 16, he intended to take mathematics, but stood in the wrong queue!

He studied under Ernest Rutherford in Manchester and Hans Geiger in Berlin, where he met Albert Einstein, before being taken prisoner by the Germans in 1914. After the war he went to the Cavendish Laboratory in Cambridge, then run by Rutherford, where he carried out his most important and significant research. During World War Two, he worked at Los Alamos in the US, as part of the Manhattan project - which resulted in the creation of the atomic bomb.

In June 2007 it was disclosed that in 1941, Chadwick was so concerned that papers by two French physicists should not fall into enemy hands, that he had them sealed and stored by the Royal Society. These were opened at a ceremony earlier this year to mark the 75th anniversary of Chadwick's discovery of the neutron and were found to concern the design of a nuclear fission reactor and ways of initiating a chain reaction - a subject still being worked on today.

T. Boddington

Christmas Wrapping...

Nick Wright gives us a further update on our Community Radio project.

Following my recent attendance in September at the North West CMA Community Radio workshop in Preston, I can confirm that Community Broadcasting in East Cheshire is unique. We are the first, the founders, the movers and shakers - and proud of it!

Please join us in December for another super-duper Chrimbo extravaganza, and yes! we will be on the air-waves as well as over th' internet. The frequency is going to be either 87.7 or 87.8 fm - so you'll just have to fiddle with the knobs for a short while. Don't worry - you'll find us - listen out for Clarence and his Dancing Ducks!

Unfortunately we still do not yet have a full-time licence, but we have applied and should hear something early in the New Year - please keep your fingers crossed and say a prayer before you go to bed tonight... "Please God, look after Mum, Dad, Nana and Grandad and - oh, I almost forgot - please give Canalside a licence!"

We are going to have some fun no matter what age you are and we've got some fabulous prizes to give away. Perhaps you own a local business; sponsorship is available for as little as £54.

Have a Merry Christmas and a fantastic New Year AND DON'T FORGET TO TUNE IN."

Nick Wright

www.ccr-fm.co.uk or call 576689

Running Around

On Sunday 10th June, Adelphi Bollington held their third annual 5k Fun Run supporting local charities along the Middlewood Way and back along the canal.

Approximately 60 people of all ages and fitness levels took part, including a team of ten runners 'Oliver's army' (in memory of Kathryn Oliver) based at Ciba Specialty Chemicals in Macclesfield who helped to swell the numbers.

Congratulations to the winner Andrea Frost, an Adelphi employee, who, having this year completed the London Marathon for the first time, came home in approximately 19 minutes. The walkers took almost an hour - but they did have a baby to contend with!

The run was preceded by a hilarious warm up session conducted by Gareth White - coach for Macclesfield Town's "Football in the Community" scheme. If the instructor is facing you and goes to his or her left, do you go to your left or your right? Exactly, the participants couldn't decide either!

The event was a great success, raising £550 which has been divided equally between Bollington Drop-In Centre and

the MAST Appeal at Macclesfield Hospital

Pat Mellish



Commons Sense

Bollington is a buoyant and vibrant community, proud of its history, its identity and environment. It is an attractive village in which to live and work. The traditional employment activities of cotton and textiles, paper, board and printing, mining and quarrying have, in the main, given way to the demands of today's commerce, industry and services. The great cotton mills, such as the Adelphi and Clarence, are now home to a multitude of smaller successful enterprises.

One of my early engagements in Bollington as the newly elected MP was to attend the opening of the new Library and Civic Hall by the late Alderman Bertie Davis, then Chairman of the Cheshire County Council. Currently, we are all concerned to know how the facilities at present used by many local groups and organisations may be adversely affected by the potential move of the Town Council Offices from the Town Hall to the Civic Hall. I would be sorry to see the Town Hall closed and I believe that the authorities should think hard before disposing of the "family silver".

If my memory serves me correctly, it was at a barbecue held in the garden of Dr. Maurice Coope's home that Glyn and Carol Taylor asked me to become a Founder President of a new light opera group and I readily accepted. I have greatly enjoyed my long association with BLOGS and have missed very few of their productions. Like the Festival Players who perform at the Arts Centre, BLOGS brings together adults and young people and the result is always excellent entertainment and great fun for all involved.

My first contact with the late highly respected and dynamic Dr. John Coope, was in connection with a planning proposal to develop land for housing near to the canal in Kerridge, which is a delightful and picturesque area. Dr. John left me in no doubt that the development would be damaging to the environment and on visiting the site with him and others, I knew immediately that he was right. The development did not take place!

Bollington should be rightly proud of the Festival which is organised every

four or five years and which is a stage for the talent and enterprise of the village. It won the Arts, Business and Community Event Category in the National Arts and Business Awards in 2005, held at the Barbican in London. Well done Bollington - and a worthy memorial to the late Dr. John who was the inspiration for the Festival! All these events are supported by a large number of local people who are proud of their village.

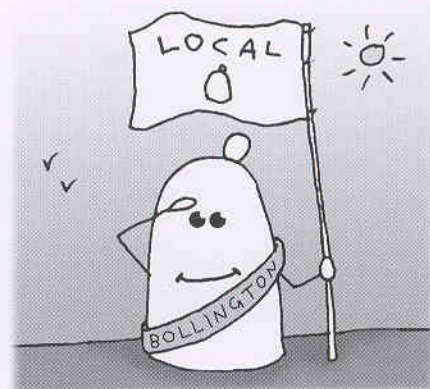


Above: Sir Nicholas taking the plunge at the newly opened Leisure Centre



Left: Betty Bonson checking for evidence of brain activity!

If Bollington people feel that a particular facility is much needed, a committee is formed and action taken. The Bollington Leisure Centre and the Arts Centre, are fine examples of community endeavour and determined campaigning - the Coope family was, of course, involved in all of these and dedicated local volunteers continue to oversee the management of these facilities as Trustees and Committee Members. I, personally, have good reason to remember the opening of



the swimming pool at which I had been asked to officiate. In short, as part of the Opening Ceremony, I thought it would be appropriate to swim a couple of lengths, the first underwater, as I was fitter and slimmer in those days. What I did not realise was that, in a new pool, chlorine fumes would hang just above the surface of the water so, when I surfaced after the first length, I inhaled a quantity of chlorine fumes and practically drowned! Luckily, Dr. Maurice Coope was there to minister to an MP in distress!

Over 35 years, I have made many friends in Bollington in every walk of life and have been able to support and to help many community projects, such as the Bridgend Centre which does such excellent work including organising an annual Nostalgia Trail to promote both the Centre and the wonderful countryside around Bollington.

I commend the Centre on this initiative. There is an active Town Council which serves the village well and over the years I have worked closely with many of its members, including the evergreen Councillor Betty Bonson. I have attended most, but sadly not all, of the Civic Services since 1971 and so my personal Parish includes all the Christian churches in Bollington, which has been a wonderful and moving experience. I am myself very saddened that St John's Parish Church is no longer in use.

To be blunt, I feel at home in Bollington. It is a thriving community where voluntary groups, churches, local schools and local people work together for the common good and it works; the local watering holes are excellent too - I do relax occasionally!

Sir Nicholas Winterton



THE CHURCH HOUSE INN

Church Street, Bollington, Macclesfield, Cheshire, SK10 5PY
Tel: 01625 574014 Fax: 01625 562026
Email: info@the-church-house-inn.co.uk Web: www.the-church-house-inn.co.uk

Roaring Fires
Great Beer, Wine & Locally Sourced Food
Families Welcome
As seen on T.V

Make it your local



Harvey Scott are one of Cheshire's fastest growing Independent Estate / Letting Agents.

Whether you are looking to Sell, Purchase Let or Rent a property Harvey Scott will always offer you a friendly professional service.

Come and visit us at our Brand New Office at 29 Palmerston Street, Bollington.

Harvey Scott - Revolutionising Estate Agency!

Offices also at:
Davenport, Stockport
and Bramhall

Tel: 01625 576222

www.harveyscott.com
e-mail: bollington@harveyscott.co.uk

Supplying Original Design & Quality Printing for 25 YEARS!

- Colour & B&W Digital copying
- Digital and Lithographic printing in-house
- Wedding, Commercial and Domestic Stationery
- Print Finishing, Binding and Booklet-making
- Posters & Promotional Material
- Word Processing and Office Services, Fax and E-mail
- Photographic Renovation, Printing & Enlargements

BOLLINGTON
P-R-I-N-T-S-H-O-P
original design & quality printing

HUGE RANGE OF CHRISTMAS CARDS

Hundreds of different cards (including many Charity Cards)

BEAUTY OF BOLLINGTON CALENDAR 2008

5th year of the beauty of Bollington - 2 Calendars this year!

LOCAL VIEW CHRISTMAS CARDS

Our unique range of Christmas Cards featuring White Nancy and local scenes.

LIMITED EDITION PAINTINGS & PHOTOGRAPHIC PRINTS

Ideal as Christmas Presents!

t: 01625 574828 f: 01625 574025

Your LOCAL Stationers

w: www.print-and-design.com
e: sales@bollingtonprintshop.co.uk

PANIC printing for RUSH JOBS!

The Old Stables, Queen St., Bollington, Cheshire SK10 5PS

CHILDREN'S DANCE CLASS

Disco Ballroom Freestyle

Saturdays starting at 10am

Albert Road Scout Hall: £3.50 per class

Please telephone Dorothy on

077 035 203 60

THE VALE INN FREEHOUSE

01625 575147

**FINE WINES
REAL ALES**

**HOME COOKED
FOOD**

FOOD SERVED

Weekdays: 12.00 - 2.30pm & 6.00 - 9.00pm

Weekends: 12.00 - 9.00pm

**OPEN FIRES - COSY ATMOSPHERE
A WARM WELCOME AWAITS!**

"The most thorough carpet clean you've ever seen or it's Free!"



"Excellent, very impressed! All marks removed on the sofas including those left by previous cleaner...red wine on the carpet nowhere to be seen. A very professional company, very impressed with the results will use you again and again."

Mrs C Clunn, Bollington

- * Carpets and upholstery
- * Oriental and area rugs
- * Leather care and conditioning
- * Spot and stain removal
- * Wood, laminate and Amtico
- * Stone, tile and grout

**CALL Healthy Home
01625 425003**



Make Mellor & Jackson your first choice for:

**Conveyancing • Wills and Probate
Accident Claims • Driving Offences
Divorce and Family Problems**

Free 'phone 0800 7319 321 or 01625 574200

The Old Bank House 52/54 Palmerston Street Bollington SK10 5PW



**MELLOR &
JACKSON**



BOLLINGTON

Live!

Bollington's Paralympian

Imagine running very fast into a black hole with no light at the end of the tunnel. This is the experience of blind athletes - the only sports people in the world not to see where they are going. Elisabeth Clegg is one of these athletes.

Elisabeth - born sighted in 1990 - attended St. Gregory's Catholic Primary school. From the age of six her sight started to deteriorate; she struggled to understand what was happening to her and no-one believed she was having difficulty seeing until finally at the age of nine she was registered blind.

Emerging from the anguish of this blow and realising her love and talent for running, she was determined to defy all odds and become a champion. Moving to Scotland she joined the Border Harriers and her mum discovered British Blind Sport - this was the catalyst for the future. Elisabeth became

"If you want something, just go ahead and get it, - anything is possible"

'Libby'; she joined the Scottish Institute for Sport and became the youngest athlete (able-bodied or disabled) to join the UK Sports World Class Podium Programme.

In 2006 in Assen, Holland, Libby became world number two, winning a silver medal in the 200m sprint aged just 16 - the youngest and most blind athlete in her field. The character and sportsmanship she showed in Holland

when her guide runner crossed the line before her in the 100m sprint, thereby disqualifying her from a second silver medal, drew wide public attention and admiration. That year she reached the final three in the BBC's Young Sports Personality of the Year. Libby is now training for the Olympics in Beijing in 2008 and London in 2012.

Dame Tanni Grey-Thompson and Sir Steve Redgrave are wonderful mentors for Libby. Sir Steve says "Libby is an outstanding athlete; very driven and very talented. She has been very successful to date, but this is probably the tip of the iceberg compared with what she can go on to achieve. I know her training regime is

very tough and she travels over many miles to be able to do this. She is an example to us all of what our youth can achieve. She has a great backup from her family and I am looking forward to working with her in the build-up to the games in Beijing and London."

Travelling thousands of miles in any one year, with her mother Moira's support as driver and chaperone, Libby

balances her huge training programme with her education, family and social life. Her sister Felicity (fully sighted) and her two younger brothers James and Stephen (both blind from the age of nine) have Libby as their role model - they form a closely knit family unit. Libby hopes to become a criminologist - life in sport is short. **A. Hurst**

www.paralympics.org.uk

"If you want something, just go ahead and get it, anything is possible" says Libby.



Corporate Sponsors of Bollington Live!

Bollington Live! thank our local sponsors for their invaluable support.

They have enabled our community publication to continue into its **fourteenth** year.

Bailey International Steeplejack Co. Ltd.

BC Transport (Bollington) Ltd.

Bollington Town Council

Adelphi Mill Properties Ltd.

Mellor & Jackson

Slater Harrison

Bollington Civic Society

Kerridge Ridge & Ingersley Vale Project [www.KRIV.org.uk]

Bailey Business Park Ltd.

Cutlers Cleaning Supplies

Tullis Russell Coaters

The Editor cannot be held responsible for the opinion of contributors, the accuracy of the events listings, or the content of external websites referred to within this magazine.



BOLLINGTON

Live!