



BOLLINGTON

Live

Issue 73 Summer 2018

**ANTIPODEAN ARTIST
PIXEL PERFECT
TRANSITION BOLLINGTON
WALKING AND BOATING**



Our focus is you

As your trusted Independent Estate Agent,
we pride ourselves on exceptional service.
Our look may have changed, but what drives
us hasn't because **our focus is you.**

harveyscott.com

New look, same
exceptional service



Come and relax this Summer

This wonderful hotel is cosy, luxurious and welcoming all at the same time. With stunning views across the Cheshire countryside, enjoy great food and a warm welcome. The hotel is modern and stylish, whilst retaining its historic charm. We have plenty to do this Summertime, or simply enjoy a relaxing stay.



HOLLIN HALL
COUNTRY HOUSE HOTEL

For bookings and events enquiries please call **01625 573246** - events@hollinhallhotel.com

COMMUNITY BEAT

Policing the community has a long history in Bollington. Much of it concerned with famous incidents at local hostelrys. (Come on the Lost Pubs Walk during the Bollington Walking Festival to find out more!)

Today **Bollington Live!** brings you news of the latest in police reorganisation in Bollington. At the centre of this operation is Hannah Jackson, newly appointed Police Community Service Officer, just for our village.

Hannah says, 'Thanks to strong cooperation with Bollington Town Council our Town Hall now doubles up as a Tier Two Police Station. Since 1 April I am dedicated to the Bollington Community and I will do my best to be available to the Community whenever and however possible. For example every shift I am on during working hours I will make every effort to be at the Town Hall. When my notice is outside I invite anyone and everyone to come in and talk to me about anything that matters to them and they think I can help with.'

A Tier Two Police Station is a new type of community resource where a community space is dedicated to regular use by the police and they have access to it at all times. There is the technical backup available to make all the checks necessary on vehicles and personnel that help modern policing.

Police Constable Gary Thurgoland will also be a regular visitor and together Hannah and Gary aim to develop a close relationship and understanding of Bollington.

Bollington Live! asked Hannah as a newcomer to our town what she thought of us. 'I love it' she said immediately. 'Yes, there are problems, particularly over traffic and parking and we have recently had the nasty incidents

E-mail Hannah: hannah.jackson@cheshire.pnn.police.uk

Remember if emergency police help is required or criminal activity is being witnessed ring 999. For general contact or to report a crime please ring 101

around stolen stone and lead. I am pleased to report we have made one arrest already. But the people I meet as I walk around, and I intend to walk around the Town regularly, are very welcoming. I shall be visiting the schools and community organisations and I am really looking forward to making a positive contribution to law and order in Bollington'.

We wish Hannah and Gary every success as they work to make Bollington a pleasant and safe community to live and work.

Ken Edwards



Hannah Jackson



Art, as many of my friends will know, is not really my thing! So to see a Bollington Live so full of art and fantastic photos this time is brilliant!

I really enjoyed my visit to the after school art club (page 5) and I have actually seen one of the Bollyrocks (page 19) near my house.

Reading about how we can all make very small changes to help the environment made me stop and think. I'd love to see some apple trees planted on our grassy verges! Also, I am really looking forward to the walking festival which is featured in this issue.

Thanks to all our contributors who make Bollington Live so interesting and varied and a special thanks to the committee who make this all happen!

If you have a story you would like to share with us, please do get in touch - we'd love to hear from you, please email me at liveditor@happy-valley.org.uk.

Annette

Date for next copy:
14 Sept 2018

YOUR TEAM

Editor..... Annette Hurst liveditor@happy-valley.org.uk
Design & Layout... Simon Nottage
Editorial Team..... Sandy Milsom, Janet Beech, Kevin Cass
 Hannah Atkin, Simon Nottage, Mark Stedman,
 Ken Edwards, Kate Gooding, Helen Wright
Advertising..... Mark Stedman (01625 575227)
 Michele Leigh (01625 572953)
livedverts@happy-valley.org.uk
Distribution..... Janet Beech (01625 574618)
livedistribution@happy-valley.org.uk
Printed..... Bollington Printshop (01625 574828)
Illustrations..... Matthew Wray
Events..... Vicki Cooper livedates@happy-valley.org.uk
Cover photograph: Reflections at Bollington Wharf by Simon Nottage

Bollington Live! is published three times a year on a non-profitmaking basis, with free distribution to households in the town. Under the editorial banner of "Bollington Live! - A voice for everyone" we aim to promote local concerns. The Editor cannot be held responsible for the opinion of contributors, the accuracy of the events listings, or the content of external websites referred to within this magazine.

Bollington Live! is an independent publication, published in association with Bollington Arts Centre & Bollington Civic Society. The copyright of all articles and images submitted remain with the respective owner(s) and all submissions are reproduced with grateful thanks. No part of **Bollington Live!** may be reproduced in any form without the express permission of the editor.

Back Issues: www.happy-valley.org.uk/live

ANTIPODEAN ARTIST

Born in Perth, Australia, at the age of 17, local resident Kieran Ingram attained a scholarship to study traditional classical drawing and painting techniques at the Angel Academy of Art in Florence, Italy.

After completing his studies in 2009 he moved to London and established a studio, producing work for exhibitions in Australia and the UK. In London he immersed



himself in the vibrant contemporary art scene, enabling him to refine his approach to painting both technically and thematically, and succeeded in selling work, initially in London and Australia. Also he was awarded the Emerging Artist Award and Cossack Art Awards (2012, 2014), Young Artist Prize at the Midwest Art Awards (2015) and many more.

In 2016 Kieran was a contender in Sky Arts Landscape artist of the year as well as one of the Sky Arts Portrait Artists this year.

In 2013 he moved to Bollington with Natasha his partner, two cats and a dog, and after helping to rescue other dogs and cats in need they now live happily with 3 dogs and the cats and are enjoying the change in scenery and lifestyle, which allow him to further develop the themes of nature and natural history in his art.

www.
kieraningram.
com, Facebook at
kieraningramartist
Twitter @kieran_
ingram

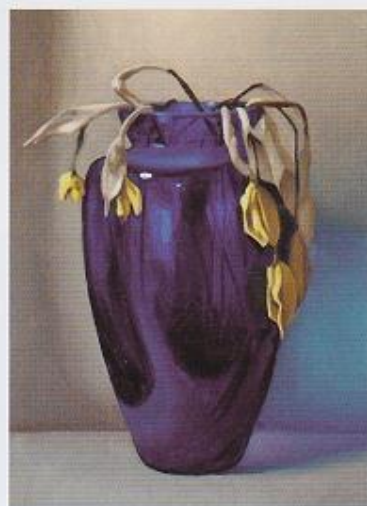


Still life and nature is now the primary focus of his work, particularly using specific seemingly unrelated objects, using the techniques of illusion and trompe l'oeil to illustrate concepts of altered relationships and playing with our perceptions.

His work is inspired by literature, such as T.S.Eliot. Natasha, who is a writer and poet, is also a knowledgeable influence.

Great artists who have influenced Kieran include Breughal and Bosch as well as Rembrandt and Velasquez for technique and other Symbolist and pre-Surrealist artists.

He particularly admires Juan Sanchez Cortan, a 16th century painter in the baroque style,



who was especially effective with chiaroscuro dark and light effects.

Kieran has recently been Artist in residence in County Mayo and is running monthly outdoor art workshops in the Peak National Park (see Cheshire Rangers events). He held an exhibition early this year in Rome and is now planning work for solo exhibitions in New York and Houston Texas.

We are fortunate to have such an artist adding to our rich village culture, and the Bollington Arts Centre is hoping he will have time for an exhibition here whenever art and time permits. **Lynn Knowing**



HEAPS OF TALENT

It always feels good when someone, previously unknown to me, gets in touch via my Bollington Live email address and proposes an article. That's exactly what Sally Heap (Art lead at Dean Valley Community School) did back in May.

After an exchange of emails, Sally invited me to an after school art club to see what the children at Dean Valley are producing for a Bollington Schools Art Exhibition to be held at the Arts Centre at the end of June.

The exhibition was the 'brain-child' of Sally Heap who said 'I wanted to celebrate children's achievements in Art throughout Bollington. Having first OK'd the exhibition idea with



my headteacher I contacted the other 3 Bollington Schools to see how we could get the project off the ground. Lucy Jobbins at St John's then contacted Bollington Arts Centre and has been helping to lead the project forward.'

Sally told me that St John's, St Gregory's and Bollington Cross schools were all interested in contributing to the art exhibition and Bollington Arts centre were delighted to reserve the coveted exhibition space in the bar area for one week. So all schools have been busily getting arty for the big exhibition which opened on 29 June.

At Dean Valley school, two pupils from each year were selected for

their artistic talents and you can see from the photos they are all hard at work producing a piece of art from a plastic chair. It was such a treat to join the after school art club – the children were incredibly creative with their plastic chairs and eager to show me their functionality.

Bradley from year 5 said, 'I have really enjoyed designing and making my art chair'. Bradley's dad was very impressed with the arty chair adding, 'we provided the chair and it's amazing what Bradley has designed.' As you can see from the photos the kids added the magic to their plastic chairs! One chair looked a little like a dinosaur and another one was modelled on a first class airline seat.

Although, a number of children were selected to produce the arty chairs, Sally said, 'I wanted all children to enjoy art for arts sake and give all the children a chance to exhibit their own work'. So with this in mind all the children at the 4 Bollington schools were given a piece of paper 8cm x 8cm on which they were asked to draw, paint or crayon something based on the title 'Bollington Inspirations'.

Over 600 squares were produced and displayed like a patchwork quilt hanging in the Arts Centre for the duration of the exhibition which opened on 29 June. On the opening evening the mayor and Mr Botwe (head of Tytherington School) both spoke, St John's school choir sang and Dean Valley orchestra performed as well. During the week after 29 June the exhibition can be viewed in the Arts Centre whenever the centre is open.



It's fantastic to celebrate young talent so congratulations to all our young exhibitors and to Sally Heap for her vision and to all the Bollington school art teachers for making it happen! **Annette Hurst**

TOWN HALL TO 'COP SHOP'

From 1st April this year (do not laugh!) our Town Hall is a Tier Two Police Station - a cop shop in our local community replacing the defunct one across the road behind The Dog and Partridge closed after the war.

A Tier Two police station is staffed on an intermittent basis by our PCSO Hannah and by PC Gary. They have key access at all times and IT equipment permanently available to do all the checks a full time Police Station can do.

The Town Council are also planning to introduce further CCTV coverage of public property and public spaces. The CCTV on the Recreation Ground has been very helpful in detecting both minor and serious crimes and misdemeanours, and we hope this extension of coverage will be equally effective.

Ken Edwards

M. CHADWICK



NEWSAGENTS & LOCAL LOTTERY AGENTS



Home delivery of Newspapers & Magazines

Seven days a week

70 Palmerston Street

Tel: 572306

www.chadwicksnewsagent.co.uk

*Depressed? Grieving? Feeling Anxious or Angry?
Relationship problems?*

EMOTIONAL THERAPEUTIC COUNSELLING can help

For a free consultation contact:

DEBORAH BRERETON Tel: 07887 847476

DOOLEYS

Hi-Fi

**For the best Flat Screen TV
and Superb Hi-Fi**

106 Mill Street, Macclesfield

Tel. 01625 264666

e-mail: sales@dooleys-hifi.co.uk www.dooleys-hifi.co.uk

GREAT FOOD & REAL ALES

**THE VALE
INN**



**THE BOLLINGTON
BREWING CO.**

**ADLINGTON RD,
BOLLINGTON.
SK10 5JT.**

01625 575 147

Independent Workshop Specialising in the repair of
Mercedes | BMW Porsche | Audi | Volkswagen | Landrover

**Sales, Service, Diagnostics, Air-conditioning
Electrical Repairs, Performance Upgrades**

Unit 1, The Old Brickworks, Bakestonedale Road

Pott Shrigley, Cheshire, SK10 5RX

Email: autotechcheshire@mail.com

Web: autotechcheshire.co.uk

Tel: 01625 575223 Mob: 07531679564

AutoTECH
CHESHIRE LTD



NANCY'S NEW CLOTHES

Have you ever wondered how Nancy stays so white? For about the last 8 years or more our local icon has been repainted annually by a team of volunteers from KRIV, the Kerridge Ridge and Ingersley Vale Countryside Volunteers.

In May or June when the weather has improved, a small band of volunteers staggers up the steps to Nancy carrying ladders, paint, rollers, brushes, overalls and groundsheets. The paint and expendables are paid for by the Town Council but the labour comes free.



The most important material to carry up is the 'brew kit', as they couldn't possibly complete any of the tasks without tea or coffee and biscuits. One previous member regularly supplements those treats with a variety of cakes. There are few membership rules but the most important is that whoever misses a Friday for a holiday has to bring back exotic treats from their destination, preferably containing chocolate.

While ladders are erected and secured by a rope that goes around the structure, the team begins removing loose paint and then starts

applying the masonry paint to areas that can be reached from ground level. The rope is used to stop the lucky volunteer who climbs the ladder from sliding around and visiting North End Farm without an invitation.

When the wind is blowing, and it normally is up there, it feels an awful lot stronger to the person climbing the ladder. If it blows in the wrong direction the painters below receive more than their fair share of paint spray. Painting the button on the top takes extra care as the space for toes on ladder rungs decreases the higher you go, and after a year of birds trying to turn it white, some fresh black paint is usually needed.

If the sun is shining the painters can often find it difficult to see where they have painted as a sort of 'White Nancy blindness', akin to snow blindness, sets in and they have to step back, preferably not if you are on the ladder, and check for any missed patches.



The first year that the button was painted black again it rained just after work had finished and one side slowly became grey with dark rivulets running from top to bottom. You can imagine the comments and one volunteer had to return early the next morning to paint over the mess before it was spotted.

We have all seen Nancy in different guises over the years and it always feels a shame to paint over wonderful artwork such as the Napoleonic soldiers, the Olympic Rings and the Queen's Jubilee design. There is usually one coat that returns each year to haunt the team and it reminds them of the



time when someone painted Nancy pink, probably to raise awareness of the Breast Cancer campaign. We don't know what was in that paint but it was incredibly durable.

Once the work is done the group carry the equipment down to the van below with a feeling of satisfaction knowing that for another year White Nancy can be seen from miles away.

During the last few months the KRIV volunteers have completed dry stone walling repairs in Tinkers Clough, in Rainow and at Windyway Animal Sanctuary. They have also laid several hundreds of metres of hedging and planted hundreds of saplings in Bollington and in a new Memorial Wood in Rainow. They will soon be returning to do more work on local footpaths in Bollington and Rainow.



The volunteers' blog (kriv-volunteers.blogspot.co.uk) provides details of the programme of future tasks and photo's of the tasks they have worked on. So if you want to get fit in the fresh air and learn some new skills while improving the local countryside then come and join the group on Fridays. **John Gooding**



PIXEL PERFECT - 11 YEARS ON

In 2005 Simon Nottage from Bollington Printshop had an idea to produce a photo book of Bollington Festival Images. The trouble was finding and collating any quality photographs of the event.

Janet Beech had recently retired and helped with the Festival Box Office that year. She had a camera and plenty of enthusiasm. We both realised that there was no photographic group in Bollington and wondered if there would be sufficient interest to start one.

In 2007 an opportunity presented itself. During an Open Meeting at the Arts Centre recruiting volunteers for the 2009 Festival, we pitched our idea to the audience, left a sign-up sheet and got our first recruits. Our group held its first meeting in September of that year.

Right from the start we knew the importance of taking photos and sharing ideas, learning techniques, spending time together, encouraging experimentation, and reviewing the results.



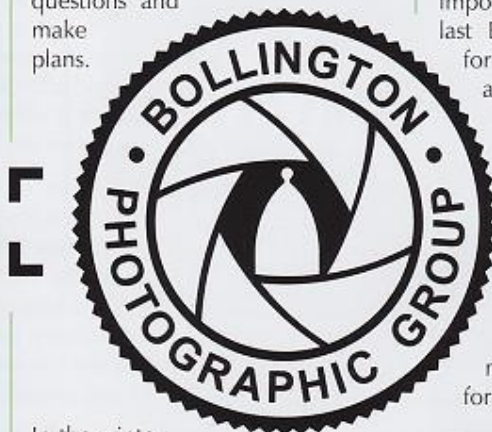
Originally called Bollington Festival Photography, our mission was 'To document the life and locations of Bollington'. We had monthly themes and meetings and were introduced to the mysteries of Flickr as a way to review our efforts

Now in our eleventh year, most of that initial group are still together sharing images. New members join us periodically and despite a disparate mix of talents and abilities, we have turned into firm friends.



In the summer months we go for weekly photo walks, weather permitting. There are a variety of walking groups in Bollington but ours does not aim to challenge fitness levels. Instead, we concentrate on photographic opportunities during the walk.

These themed walks are usually based on subjects covered during our winter talks so that we can 'focus' our efforts. They usually end in a pub where we can chat, swap stories and techniques, ask questions and make plans.



In the winter months we hold monthly meetings with invited speakers at the Printshop. Amongst varied themes we have heard talks about photographing Wildlife, Events and Street Photography, Astro-photography and even a session on Data Protection for the Photographer.



Pencilled in for the next Autumn Season are talks on Landscape Photography, Event Photography, Composition, and Use of Lightroom, amongst other topics.



In our time we have produced a variety of photo books, including a book recording a year in the life of Tinkers Clough, and the demolition and rebuilding of Number 13, Cow Lane. We also played an important role, documenting the last Bollington Festival, capturing for posterity a comprehensive archive of high quality images.

We are always looking for similar projects if you know of any. We especially enjoy recording Bollington events.

Our work is periodically shown with the next exhibition being planned for April 2019 at the Arts Centre.



Look out for our stunning centrepiece - a massive 15 foot long collage of the best photographs from the last festival, filling the wall by the bar in the Arts Centre - you might even spot yourself within it!





TO THE FUTURE

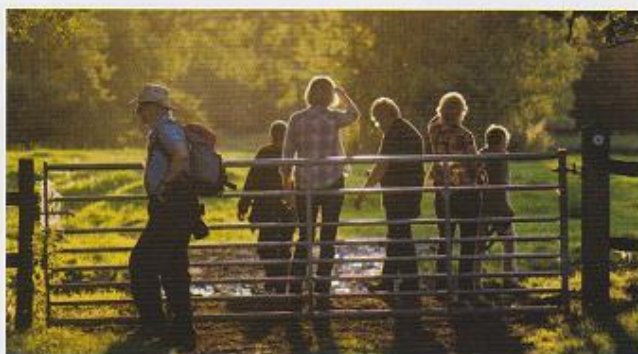
After all this time we felt that we needed a new way forward. We now have a new name, a new logo, and a web site under construction. We are now the Bollington Photographic Group with some new members and are looking to attract many more.

We'd love to see you!

If you enjoy taking photos and want to join in, then what is stopping you? We welcome new members of any ability, from absolute beginners to those who are committed

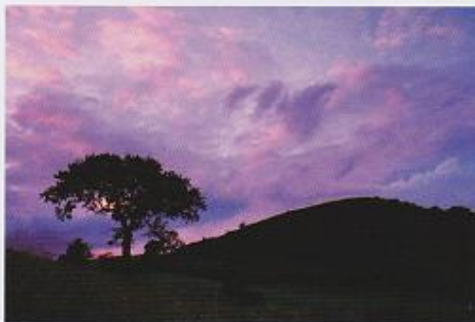


enthusiasts. The only requirements are a camera of any type, large or small (even just a smartphone!) a willingness to join in and the courage to click that shutter! That is where being in a friendly group such as ours can help grow your confidence.



Until our web site is launched, the Bollington Facebook page and BollyPhotoWalks on Twitter will give details of future meetings or you could contact Janet Beech on 01625 574618 for details and to get involved.

Simon Nottage



Photographs by members of the Bollington Photography group. Bottom left image is a small section taken from the 15ft long Exhibition wallpaper showing some of our Festival Photographs.

I am a member of the Bollington Photography Group and recently went on the first Friday Evening Summer photo walk of 2018 and thoroughly enjoyed the experience!

There were ten of us and a dog and the weather was good (always a bonus!) We had a variety of cameras, skill sets and experience and most of us knew each other well. Two new photographers were also a welcome sight.

Our theme that evening was 'Reflections'. It helped me that one of the walkers is also a member of an art group and kept pointing out interesting perspectives she had seen in windows.

When we arrived at the canal, the light started to change and settings on the cameras had to be adjusted. This is where being in a group containing some very experienced operators helps greatly. There is always someone to answer technical questions like "what 'f-number' do I need" or even "what is an f-number?" With great patience there is always help.

Strangely, although the light was failing, the windows in the houses along the canal were reflecting a lovely sunset and that was a bonus. Back along the Middlewood Way and, as usual, we ended up in a pub.

We hatched a plan to put our best reflection images on memory sticks to view if we can't walk because of the rain next time. One person said 'I knew I didn't take that one sweet photo that I could be proud of. Like a good golf shot, you know when things have worked.' So Simon from the Printshop volunteered to lead a winter meeting on Composition.

We are always looking for events to photograph and interesting views to capture. Being in a group of like-minded people helps to give us confidence and we love to be challenged to do interesting things. Do come and join us!

Janet Beech



Established 1989

KELICO INTERIORSTM

RE-UPHOLSTERY & BESPOKE FURNITURE

Upholstery designers and manufacturers
Re-upholstery and restoration specialists
Visit our unique showroom

www.kelico-interiors.co.uk

01625 560434

sales@kelico-interiors.co.uk



Canalside, Clarence Mill, Clarence Rd. Bollington

BARROWS

TRADITIONAL BUTCHERS



Est since 1890

1 Henshall Road, Bollington, SK10 5HX. Tel: 01625 572110

michael
HART
& COMPANY

CHARTERED SURVEYORS
LAND and ESTATE AGENTS
AUCTIONEERS and VALUERS

2 Henshall Road Bollington Cheshire SK10 5HX
telephone Bollington 01625 575578
fax Bollington 01625 576713
e-mail info@michael-hart.co.uk

FREE Pre-sale valuations & advice
Full property letting & management service
All types of surveys and valuations undertaken
Independent mortgage advice

www.michael-hart.co.uk

Also at: 36 Park Lane Poynton Cheshire SK12 1RE telephone 01625 876331



GRIFFIN

ACCOUNTANTS

63 Wellington Road, Bollington, Macclesfield SK10 5JH
email - mike@griffinaccountants.co.uk
www.griffinaccountants.co.uk

01625 578030

LIMITED COMPANIES • PARTNERSHIPS • SOLE TRADERS • INDIVIDUALS • CONTRACTORS

24 HOUR
SERVICE

BOLLINGTON Veterinary CENTRE

1 Ashbrook Road, Bollington, Cheshire SK10 5LF

Tel: 01625 572999

www.bollingtonvets.co.uk

Surgery Open

Monday to Friday: 8am - 7pm
Saturday: 8.30am - 12.30pm

Consultations
by appointment

Also at:

TYTHERINGTON
Veterinary
CENTRE

Brocklehurst Way
Tytherington, SK10 2HB
Tel: 01625 669666

JEREMY UNSWORTH

Independent Family Funeral Directors of Distinction

inc. Unsworths Monumental Masons

Est. 1987

Valerie House, 39 Palmerston Street, Bollington, Cheshire SK10 5PX

Email: unsworths.funeral@aol.co.uk

*Traditional & Alternative
Funerals Undertaken*

Chapels of Rest

24hr Service

*Horse Drawn Hearse
(by prior arrangement)*

Also at:

67 Church Road
New Mills,
High Peak, SK22 4NU
Tel: 01663 742772

The Courtyard,
Market Street, Whaley Bridge
High Peak, SK23 7LP
Tel: 01663 732064

Independent Family Funeral Directors

Tel: 01625 560078

Golden Charter
Funeral Plans



Benefit from our experience.

A fresh, professional
approach to accountancy
and tax in Bollington

*Why not call in to our
new offices for a chat?*

FROZEN ASSETS

Brian Brereton, an American, and his British born wife, Deborah, first came to live in Bollington 10 years ago, when they quickly fell in love with the community and made many friends.

However, exciting work opportunities opened up for Brian in America and they decided to move there for a few years. They always intended to come 'home' to the town. After eight years in America with his own company well-established and with the convenience of the internet and the closeness of Manchester airport Brian knew that he could continue the business in the UK so in January 2018 they moved back to Bollington.

What then made a highly qualified American executive with a wealth of experience in training, management and sales, decide to start an ice cream company in Bollington?

The 'ice cream story' begins in Brian's teenage years when he worked in an ice cream parlour in Connecticut, USA. This experience began his long held passion for ice cream! Following years of joking



with the family when they previously lived here, 'We could do with an ice cream parlour in Bollington.' After just a few weeks of living back here Brian decided to 'go for it' and set up his own Bollington Ice Cream Company.

The ice cream he makes is 'proper old fashioned handmade scoop ice cream' and 'definitely not gelato' says Brian. It is like no other that can be bought in the area. It has a higher cream and less sugar content than most commercial ice creams and Brian has also taken an ethical stand in respect of the ingredients. This commitment has gone as far



as visiting dairy farms in the area to see how the animals are managed. He has found a farm in Cheshire where the cows are purely grass fed. The production of a vegan ice cream is also being explored.

All other ingredients are sourced, wherever possible, locally. For example, The Big Hill Distillery in Mobberley has asked him to develop an ice cream using their 'Spirit of George' gin. With the addition of a further ingredient, Valencia orange, a gin and orange flavour ice cream is now an established favourite.

Local Bollington companies are contributing to the development of different flavours; The Happy Valley Honey Company has provided the honey for a honey ice cream; The Bollington Brewery has provided their Oat Mill Stout for a Stout flavoured ice cream and Bollypuds have provided their sticky toffee pudding for, you've guessed it, sticky toffee flavoured ice cream.

Small batches of the ice cream are currently made and tested in the family kitchen. In addition, one day per week, Brian hires a larger commercial kitchen for more substantial quantities. However, he is now looking locally for commercial premises or a shop where he can make all the ice cream in one place.

After only a few months in business Brian is amazed how successful the company has become. The various ice cream flavours are being ordered online for children and families. The liquor-infused flavours are quite popular for adult dinner parties, and inquiries are even coming in from organisers of wedding parties.

Currently, customers are collecting their orders from the house, or Brian and Deborah are personally delivering orders to customers' homes. However, Brian and Deborah are now taking their ice cream to events such as the beer festival so you will have a chance to try their delicious ice cream.

One of the testimonials for Brian in respect of his Training and Management Company states he is 'known for his dynamic, entertaining and engaging style'. These personal qualities are also ensuring excellent results for this newly formed Bollington Ice Cream Company. We can, therefore, only wish him every success for the future.

Kate Gooding

Orders or enquiries:

www.facebook.com/BollyIceCream

www.bollingtonicecream.co.uk

brian@bollingtonicecream.co.uk

Horticultural Society

In May, Bollington Horticultural Society had a trip to the famous Keukenhof Gardens in Holland to the tulip festival. There were more than 7 million tulips, daffodils and hyacinths in bloom and it was a really breath-taking sight.

Everywhere you looked was a sea of flowers with all the varieties named. The society also had a trip through the colourful bulb fields surrounding Keukenhof. The weather was wet and the overnight sea-crossings were bumpy but the beauty of Keukenhof made up for everything.

Photos by Margaret Mirrlees





BOLLINGTON *live*

To include your event, please e-mail: livedates@happy-valley.org.uk

14TH WELL DRESSING FESTIVAL

Saturday 30th June to Sunday 8th July

Saturday 30th June 11.30am.

Opening ceremony

Greg Fountain, Flash Lane
with the Mayor elect

Entertainment will be provided by
Bollington Cross Primary School.

This year's theme is '100 years since'

If you would like to get involved in making the displays please join us at Bollington Cricket Club on any of the following days prior to the festival:
Wednesday 27th and Thursday 28th June between 9am until 8pm or Friday 29th June from 9am

July

Friday 6th - 7.30pm

A celebration of Simon & Garfunkel

Arts Centre £12 online

Sunday 8th - 11am

14th Nostalgia Hill Race

7.11 mile funfest for age 18+
Bridgend Centre £6 in advance or
£8 on the day 576311

Sunday 8th - 2.30pm

Kerridge War Memorial Remembrance Parade

Starting at Kerridge Holy Trinity Church and proceeding to the War Memorial for 3pm service

Monday 9th - 6.30pm

Scibar Microplastic Contamination

A talk by Professor Jamie Woodward
Vale Inn Free

Friday 13th - 6pm, Saturday 14th 12-5pm or 6-11pm

7th Bollington Beer Festival

Arts Centre £7 online at
www.bollingtonbeerfestival.co.uk

Thursday 19th - 7.30pm

Bollington Horticultural Society - how to manage a historic garden

Talk by Simon Gulliver Community Centre Member £1.50 non member £3

Friday 20th - 8.30pm

Jez Lowe at Bolly Folk Club

Dog & Partridge bollyfolk.com

August

Saturday 11th - 12pm to 4pm

Family Fun Day

Games, face painting etc
St Oswald's church

Sunday 26th - 10am

Bollington 10K

Leisure Centre member: £14.50, non member: £16 online bollingtonrun.co.uk

Sunday 26th - 1pm

BCC Presidents Day

Recreation Ground

September

Wednesday 5th - 7.30pm

Pott Shrigley Flix in the Stix

Mollys Game

Village Hall £4 advance £5 on the door
pottflix@gmail.com

Saturday 8th - Sunday 9th 11am to 4pm

Bollington Boat & Folk Weekend

Celebration of all things boat and folk on the canal at Clarence Mill

Saturday 8th - 8.30pm

Pete Coe at Bolly Folk Club

Dog & Partridge £8 online bollyfolk.com

Sunday 9th - 8am

7th Bollington Bikefest

Three routes, online
bollingtonbikefest.com

Monday 10th - 6.30pm

Scibar Genomics

A talk by Dr. Angela Davies
Vale Inn Free

Thursday 20th - 7.30pm

Bollington Horticultural Society - RHS Bridgewater Garden

Talk by Marcus Chilton-Jones
Community Centre
Member £1.50 non member £3

Saturday 22nd - 2pm to 4pm

Church Garden Party

Annual fundraiser at St Oswald's church

Sunday 23rd to Sunday 30th

Bollington Walking Festival

Programme of local walks Bridgend Ctr.

October

Monday 8th - 6.30pm

Scibar Made to be measured

A talk by Dr Tony Bristow, Astrazeneca
Vale Inn Free

Friday 12th - 8.30pm

Sunjay at Bolly Folk Club

Dog & Partridge £8 online at bollyfolk.com

Thursday 18th - 7.30pm

Bollington Horticultural Society - What's up with this plant?

Problem solving with Steve Reynolds
Community Centre member £1.50 non member £3

BOLLINGTON CIVIC SOCIETY

Bollington Civic Society has a wide spread of interests and we have been kept up to date on modern pressures in education through Manny Botwe, Head of Tytherington. We have had a wonderful tour of the creation of the universe from Professor Gary Davis who is leading the development of the world's largest radio telescope, The Square Kilometre Array, from Jodrell Bank.

Closer to home we have been involved with the very controversial development of 11 three-storey town houses on the Tullis Russell Bowling Green. The Society views this as serious overdevelopment detrimental to the Bollington Conservation Area as well as the interests of local residents. The latest application has been refused by the Northern Planning Committee and is being appealed. We will oppose the appeal.

On the positive side we are working on a series of heritage signs to inform visitors and residents of the great industrial history of Bollington that started with water-driven mills on the Dean and flowered into magnificence with steam-driven mills on the canal.

Members have also been heavily involved as volunteers with the creation of the Bollington Neighbourhood Plan that we hope to see in place after the Referendum last May.

All are welcome to our meetings on the third Monday of every month between September and May (7.30-9.30pm) at the Bollington Community Centre. **Ken Edwards**

DATES FOR YOUR DIARY

THE BRIDGEND CENTRE

Community kitchen, IT suite
& charity shop

Mon-Fri 10am-4.30pm
Saturday 10am-1pm

01625 576311

Monday

10.30am Mindfulness
1pm Jewellery making
2pm Talk and Games (TaG)

Tuesday

10.30 Craft club
11.30am Reading group
(once a month)
1.30pm Art club

Wednesday

10.15am Guided walk
2pm Mahjong
2.15pm Creative writing

Thursday

10.15am Yoga
11am Reading circle (weekly)

Friday

10.30am Choir

MONTHLY EVENTS

Love Bollington Market

2nd Sunday of the month
10am-3pm, see Facebook page

White Nancy Breakfast Club

Last Sunday of the month
From 7am, see Facebook page

Sip & Knit

2nd Wednesday
8pm Vale Inn Free 575147

Car Wash

Alternate Wednesday
10.00am-1.45pm
Recreation Ground £2.50

Knit and Natter

2nd & 4th Thursday 2-4pm
Mount Hall Nursing home Free

Bollington Photographic Group Summer Photowalks

All welcome with camera!
EVERY FRIDAY: 7.00pm start -
Various local locations
See Bollington facebook page or
twitter. Free 574618

WE NEED KNITTERS!

For Bollington Festival 2019 we plan
to 'yarn bomb' areas of Bollington with
knitted ducks, jackdaws, magpies etc

Patterns available, we just need recruits
mad enough to join in!

Contact Janet Beech at
livedistribution@happy-valley.org.uk



Arts Centre tickets:
www.bollingtonartscentre.org.uk



J.J.J. HEATHCOTE LTD.

Wholesale Butcher & Cattle Salesman

Palmerston Street, Bollington 01625 572202
114 Wellington Road, Bollington 01625 573172

From our own LOCAL FARMS for BEEF, PORK & LAMB

RENAISSANCE FUELS

BOLLINGTON WHARF

Grimshaw Lane

Calor Gas - Solid Fuels - Logs - Red Diesel

Regular, reliable delivery throughout Cheshire

07791 345004 / 01625 575811

BOLLINGTON BOATS & BIKES

from
£99-
160
/day

"Fantastic day out!"
Ceri, via Facebook

from
£16
/day

"Great bikes to take on a picnic"
Anna, via Facebook

Explore the Macclesfield Canal
and the Middlewood Way

Bollington Wharf,
Grimshaw Lane
Bollington, SK10 5JB

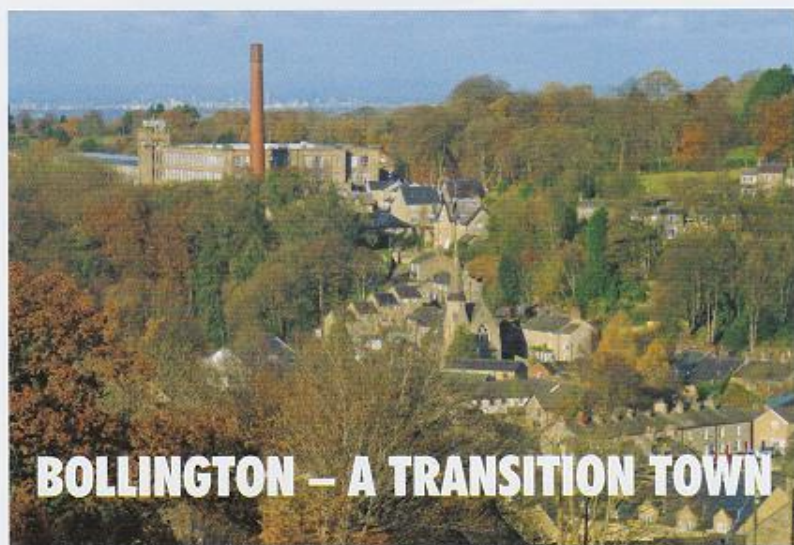
01625 575811

www.bollington-wharf.com



enquiries@bollington-wharf.com

ECO MATTERS ~ SUSTAINABILITY ~ CLIMATE CHANGE



BOLLINGTON – A TRANSITION TOWN

Transition Bollington is Bollington's new environmental start-up group, formed initially as a local response to the campaign for the reduction of single-use plastics, and now also looking at 'edible plants' schemes that will benefit the community and the environment.

WHAT IS 'TRANSITION'?

Pressure on the world's resources, increasing consumerism and industrialisation, the extraction of fossil fuels, environmental contamination and climate concerns are just a few of the global issues giving rise to a move, or 'transition', by an increasing number of communities to a more sustainable and resilient way of living, while also being mindful of the legacy that will be left for future generations.

Historically, the transition movement dates back to the peak oil concerns of the 1990s. In 2006, a small group of people in Totnes, Devon got together and decided to change how they moved through their world – they knew they couldn't solve the big global issues such as dependence on fossil fuels and climate change.

Instead the group began by supporting and growing local grass-roots initiatives with a mind to future-proofing their community.

Their initiative became known as 'Transition Town Totnes'. Since

then, over 250 initiatives have registered in the UK, and the transition network is spreading, with hundreds more across the world. Locally, Wilmslow, Northwich, Buxton and New Mills are all on board with transition.

How 'transition' happens depends on how a community chooses to move forward. For example, some people may wish to address where their food comes from and the conscious choices they make as consumers. The education of young people to make them more aware of the environment, different ways for homes to be heated and powered, changing from multinationals to local suppliers, and arguably most important of all, to what extent people are involved and respected in the decision-making processes of local authority and government planning, as that has the biggest impact on the availability of their choices.

In many ways, Bollington is also on a transition path. Many long-established and varied groups represent the depth of feeling that we as a community have for our environment – from KRIV to horticulture, guerrilla clean-ups to wildlife response, and a festival every few years in celebration of that vibrant spirit; the heart of Bollington is very much in a community that cares.

BLOOMING BOLLY EDIBLE PLANTING IN THE COMMUNITY

A major element of community sustainability lies in rethinking where food comes from and in breaking away from the reliance on and heavy carbon footprint of shopping at supermarkets.

As well as endeavouring to #ShopLocal and support local producers, communities across the UK are realising the benefits of creating and managing edible planting schemes on available land to share the work and benefits within neighbourhoods.



For example, imagine apple trees punctuating the verges of Bollington ... children developing a deeper understanding of where their food comes from ... residents having responsibility for a free supply of fruit ... a flowering herb and produce bed outside the library instead of sterile amenity bedding ... fruit trees, wild flowers and vegetables growing where there were just patchy areas of grass.

JUST SUCH AN IDEA IS TAKING SHAPE ...

Transition Bollington is working with Bollington Town Council and local permaculture and horticulture experts on a proposal to transform the disused plot at the Town Hall with an edible planting scheme. Volunteers will be needed to dig over the soil and plant the trees, bushes and plants with a view to the area being established in time for the 2019 Bollington Festival.

BIODIVERSITY ~ GREEN ISSUES

SMALL CHANGES - IDEAS TO TRY AT HOME

CHOOSE ...

- native English marigolds (perennials that reseed) instead of French marigolds (bedding plants) – the leaves of our native English marigolds are edible and add a wonderful nutty flavour to salads and sandwiches



- fruiting trees instead of standards – they will still blossom, and provide a source of free fruit every year (try miniature versions if space is limited)
- blueberry and cowberry bushes instead of standard green shrubs
- trailing rosemary or other herbs in window boxes instead of plastic-packaged bedding every year

REFUSE!

- to buy plastic bags of salad – have a go at growing your own lettuce, beetroot and chard for a steady supply of fresh leaves all summer long



AND SPREAD THE NEWS

Forthcoming meetings at the Dog and Partridge, 7.00pm:

Monday 30 July, Tuesday 28 August
transitionbollington@outlook.com
www.transitionnetwork.org

bollingtonboatandfolkweekend.weebly.com

bollyfolk.com

Canal Photos:
 B. McGuigan

BOLLINGTON BOAT AND FOLK WEEKEND

7, 8 & 9 SEPTEMBER

The plans for this year's Boat and Folk weekend are progressing, with some improvements over 2017 (including, hopefully, the weather!).



Macclesfield Canal Society will also be involved, and the Canal and River Trust will have a gazebo showing some of the work they have been doing on the Macclesfield Canal.

There will be a free folk concert on the Friday night in the Waterside Cafe where Rob will be providing a range of suppers (including vegetarian).

During the daytime on Saturday there will be activities around Clarence Mill and the towpath. There will be historic narrowboats on display, with demonstrations of traditional canal crafts plus other interesting activities.

In the evening Bollington Folk Club will be hosting a folk concert in the Arts Centre, with two guest acts, Pete Coe, and Yesterdays Men.

By the time you read this article all arrangements will have been confirmed and to see the final programme please go to,

We hope to see you over this weekend and we hope you continue to enjoy the canal.

Pete Wood and Malcolm Bailey

The group are also asking for donations of spare vegetables, herbs and other edible plants that residents may not have room for in their gardens, in order to fill the raised bed outside the library.

There are many other areas of available land in Bollington that are currently disused and redundant;



many are council-owned and these need only a small residents' group to come forward with a proposal for using and managing them.

In the meantime, one guerrilla gardener has already been busy at the aqueduct with beautiful woodland plants.

If you would like to get involved or have a scheme of your own in mind but are not sure how to get started, the Transition Bollington group would love to hear from you.

Talk to neighbours about using shared spaces and wasted verges for growing edibles, and get schools on board to enable children to learn permaculture skills that will benefit them in the future. **H. Wright**





THE CHURCH HOUSE INN

info@thechurchhouseinnbollington.co.uk
01625 574014

KEEP THIS VOUCHER FOR
10% OFF
FOOD ORDERS

MON-THURS March, April, May, June 2018

24 CHURCH STREET, BOLLINGTON, MACCLESFIELD SK10 5PY

ADAM PARTRIDGE
AUCTIONEERS & VALUERS

A One Day Auction of Studio Ceramics & Modern Design

The Cheshire Saleroom, Macclesfield

Friday 16th March 2018

with viewing on Thursday 15th March 2018

Fortcoming Macclesfield auctions:

5th April 2018 - Antiques & Fine Art with Sporting, Militaria, Clocks & Barometers.

17th May 2018 - Antiques & Fine Art with Asian Art & Musical Instruments.

28th June 2018 - Antiques & Fine Art with Wines & Spirits, Silver, Jewellery & Watches.

The Liverpool Saleroom
18 Jordan Street
Liverpool
L1 0DP
0151 709 8051

The Cheshire Saleroom
Warrington House
Macclesfield
SK10 2BD
01625 431786

The Macclesfield Office
95 Park Road
Macclesfield
SK10 2BS
01625 531773

BACKGROUND IMAGE: COURTESY OF THE CHURCH HOUSE INN, BOLLINGTON, CHESHIRE

Marie Ann
HAIRDRESSER

9 Grimshaw Lane, Bollington

Tel: 01625 572495

Mob: 07963 252898

OAP's rates Tues & Wed

Chris Plant Dental Lab DENTURE REPAIRS

2nd Floor, Adelphi mill, Grimshaw lane, Bollington
Tel. 01625 560881

RED OAKS FARM BED & BREAKFAST



**** Silver Award B&B

www.redoaksfarmbollington.co.uk

To book accommodation

Phone 01625 574280 or 07870 814776

brendahelenbuxton@btinternet.com

A lifetime of legal care for you and your family

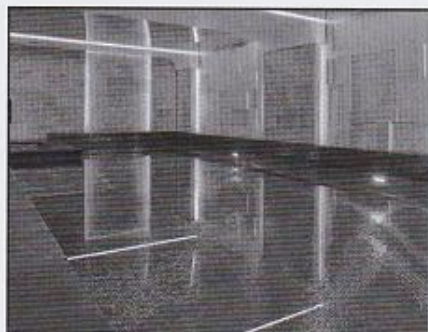
Whatever your specific legal requirements, talk to a member of the team to discover why Thorneycroft Solicitors has a reputation for providing the highest levels of client care and advice.

- Personal Injury
- Clinical Negligence
- Residential Conveyancing
- Commercial Conveyancing
- Employment Matters
- Settlement Agreements
- Wills and Probate
- Lasting Powers of Attorney
- Divorce
- Family Matters
- Employment/HR Support for Businesses

THORNEYCROFT
SOLICITORS

01625 503444

www.thorneycroftsolicitors.co.uk



Portrait
Pools.com

Design • Build • Behold



Showroom: 2 Store Street, Bollington, Cheshire SK10 5PN Tel: 01625 466200

Email: info@portraitpools.com

Web: www.portraitpools.com

Multiple SPATA award winners including National Pool Contractor of the Year 2011, 2013 & 2014 SPATA Approved Installer Member



THESE BOOTS ARE MADE...

BOLLINGTON WALKING FESTIVAL SAT 22-SUNDAY 30 SEPTEMBER

The Walking Festival committee is always looking for different ways to start our walks. Having previously used trains, buses, coaches and minibuses, this year – for the first time, in our ninth Walking Festival – we are using narrowboats.

In partnership with Bollington Wharf, on Tuesday 24 September we will be undertaking a 7-mile walk plus a boat trip. We will still be using other forms of transport during the festival, including a coach trip to Whaley Bridge and Hayfield with a walk back; a walk to Torrside Brewery in New Mills led by Bollington Real Ale Ramblers, returning by minibus after a tasting session; and a walk to Horwich End using a service bus back. We won't be using planes, on environmental grounds!

The boat walk fits well with our policy of working in partnership with local businesses, and we will again be running walks to Hollin Hall and the Random Apple Company, and to local cafés, including Café Waterside, No. 74 Delicatessen and the new Farm Made Tearooms. This being Bollington, our main orientation is towards the local community, with generous financial support from the people of Bollington via Bollington Town Council, who will again be launching the festival with the traditional Mayor's Boundary

Walk. We also count on an army of volunteer leaders, and the Bridgend Centre which acts as our nerve centre for the duration of the Festival.

We offer all sorts of walks of different lengths and difficulty. These walks vary from 4 to 22 miles and are led by the Bridgend Centre, East Cheshire Outdoor Group (ECOG), East Cheshire Ramblers and, in the case of the 22-mile walk, the Long Distance Walkers' Association (LDWA). The walks start in the morning, afternoon and evening. We do not have a 'walking through the night' walk yet – but you never know – and we have run early-morning walks in the past.

In addition we offer specialist walks and orienteering for children and families starting from Bollington Library and the Bridgend Centre; photography and art walks led by local specialist practitioners; an evening ramble led by Cheshire East Rangers; heritage and history walks by Civic Society members; and for the first time at a weekend, for drinkers and historians, the highly recommended Lost Pubs of Bollington walk, which eventually finds an open one! We are also running Nordic walks, including a free taster session for beginners, and the Macclesfield Eye Society Sensory Walk for those with visual impairments.

Mindful of the health benefits of walking for all, the Bridgend Centre, Walkers are Welcome and East Cheshire Ramblers offer specialist health walks and strolls as part of the Festival. However, 'walking for health' is not just a 9-day Festival wonder, and the up to 2-mile Monday and Friday Walks for

Walking Festival
website www.bollingtonwalkingfestival.co.uk

Bridgend
Centre www.bridgendcentre.org.uk, 01625
576311

Health programme runs from April to September every year – further details from the Bridgend Centre, who also run the long-established Wednesday morning programme of 4-6-mile walks and Saturday longer walks.

None of this would be possible without the support of numerous local organisations, most of whom run regular walking programmes all the year round. Please see our Walking Festival leaflet and website and the Bridgend Centre for more details of walks, any booking requirements (essential for a few of the walks) and organisations and individuals leading the walks.

Please also feel free to approach any member of the Walking Festival committee which has been meeting monthly since the last Festival to organise the event – Tricia Hodgskiss (Bridgend Centre), Rob Nicholson, Tracy Mills, Juanita Bullough, John Gooding, Chris Brear and Jim Hoyle.

Jim Hoyle

BOLLINGTON TOWPATH REVIEW

I'm pleased to tell you that the Friends of Bollington Towpath have completed laying stone on the last section of our patch, between the Canoe Club hut (Grimshaw Lane) and Bridge 28, adjacent to Tinkers Clough. Some stretches have now been covered twice. The Canal and River Trust teams have also repaired the damaged side edges along the towpath and grass seeded these areas. Future plans for the group include towpath improvements immediately to the North of Clarence Mill (the muddy bit !)

Malcolm Bailey



A D FIRTH & CO Your Bollington Solicitors

Alan Firth LLB (Hons) Principal

CONVEYANCING, WILLS & PROBATE
POWERS OF ATTORNEY

18 Spinners Way, Bollington
Macclesfield, Cheshire SK10 5HE

Tel: 01625 261840 Fax: 01625 267597

Foot health and wellbeing

Podiatry/Chiropody Treatment

Relaxing foot bath
Toe nails cut and problem nails dealt with
Corn, Callus and hard skin removed
Rough skin treated
Cracked heels smoothed
Finally a relaxing foot massage and after care advice

- Biomechanical Assessments • Nail Surgery

Helen Kay BSc (Hons) Podiatry

M.Ch.S, Registered with the Health & Care Professions Council

For an appointment call today

Telephone: 0777 216 6751

Home visit available
Or visit us at:

Park Lane Chiropody Practice
Above Henrietta Cards
35a Park Lane
Poynton
Cheshire SK12 1RD



Visit our **STONE & QUARTZ SHOWROOM**
at Turner's Eco-Lodge in Ingersley Road

01625 303 030

www.simplicitygranite.co.uk

Your Granite Worktop Supplier



Golden Charter
Funeral Plans

ANDREW SMITH

FUNERAL SERVICES

PARK GREEN HOUSE
82 SUNDERLAND STREET, MACCLESFIELD

www.andrewsmithfuneralservices.co.uk

- Independent Family owned business
- Friendly, helpful, caring team providing practical, emotional, support
- Celebration and Thanksgiving services to meet your needs
- 24 Hour Personal Attention

01625 433 853



NURSERY RHYMES NURSERY

Nursery Rhymes is a lovely new nursery in Bollington. A special place for your child to learn, giggle and grow. Our aim is to provide quality childcare in a smaller setting where a more homely approach is achieved.

We have a dedicated caring and experienced team and also have a full time early years teacher to ensure your child is ready for the next big step of school.

The nursery has lovely spacious rooms and a large secure garden.

The nursery is a family concern, already having an established and very well regarded nursery in Cheadle, Stockport, most of the children starting at Bollington have come via personal recommendation.



- ★ Discounts for full time and sibling places
- ★ Free nursery education places for 2, 3 and 4 year olds subject to eligibility and availability
- ★ Please contact the nursery to arrange a visit or have a look round, we are already proving popular in Bollington and the surrounding areas.



Opening hours 7.30am - 6pm

Email: bollington@nurseryrhymesnursery.co.uk

Telephone: 01625 573233

www.nurseryrhymesnursery.co.uk

#BOLLY ROCKS!

Are you wondering why colourful rocks are being left in parks, along roads or hidden on the walking routes near you? #BollyRocks has arrived in Bollington!



WHAT IS #BOLLY ROCKS ALL ABOUT?

This community activity involves painting designs onto stones and leaving them in places to be found by others. Delighted finders can either keep the rocks or hide them again in a new location, sharing their finds on the Facebook #BollyRocks group.

WHAT ARE PEOPLE SAYING ABOUT US?

'Found our first rock! Think I was more excited than my little boy!'

Gemma Hibbert



'Four #BollyRocks found on our walk today, to the absolute delight of my 4-year-old.'

Angela Phelan



HOW DO I GET INVOLVED?

All you need are a few rocks, emulsion or acrylic paint or pens such as Sharpies and a splash of creativity. Paint a design or write a

positive quote on your rocks and hide them somewhere in plain sight. Include on the back the Facebook group #BollyRocks so people can share where they found your rock. Some are so popular they end up going on holiday or even overseas!

WHAT DESIGNS CAN I PAINT?

Often the shape of the rocks will inspire you.

Of course, there are plenty of ideas on Pinterest and 'how to' videos on YouTube if you get stuck.

HOW DID THE CRAZE BEGIN?

It began in America and didn't take long to spread overseas. My mum found some painted rocks two years ago in a National Trust park in Derby. I thought it was a great idea and finally decided to start a group right here in Bollington.

WHAT MAKES IT SUCH FUN?

It has been so long since I did any painting or drawing for myself, and I was thrilled with my efforts.

Not only is it fun to make and hide the rocks, it is exciting to find them too. Sharing pictures online of the rocks you have made and found or clues about their hidden locations make the project very social. It brings together members of the community who may not usually interact.



WHAT'S COMING NEXT?

#BollyRocks will be hosting a halo event at the Bollington Festival. Five unique 'Golden Ticket' rocks will be hidden during the Festival and the finders will win prizes.

I have been overwhelmed by all the positive responses. Happy hunting!

Hannah Roberts



'This one just had to be a little mouse....'
'The children also throw a lot of ideas my way' said **Nia Lock**.



'Family effort at rock painting – not going to own up as to which rocks are whose!' said **Michelle Richardson**.

OFFICE TO LET

The Old Bank House,
Palmerston Street

Located opposite
Pool Bank Car Park

TEL: 01625 560333

tyrZ

FOR TYRES

LOCAL, PROFESSIONAL & HONEST

CAN'T GET TO THE GARAGE? NO PROBLEM.

WE ALSO OFFER A MOBILE TYRE FITTING SERVICE AT YOUR HOME OR PLACE OF WORK.

BUDGET TYRES FROM

£40

PUNCTURE REPAIRS

£20

LEADING THE WAY

FREE TYRE LIFE GUARANTEE



DAVANTZ TYRES

LOW NOISE
SMALL PASSENGER
CAR TYRE

HIGH PERFORMANCE
PASSENGER
CAR TYRE

ULTRA HIGH
PERFORMANCE
TYRE

DURABLE &
FUEL EFFICIENT
SUV TYRE

HEAVY LOAD
COMMERCIAL
VAN TYRE



© 01625 560 560 • tyrz.com

'A First Class
printing service at very
competitive
rates... You take
pride in what you
do and I
recommend
you to anyone who
needs print.'

'I am still
in awe of
my prints!
'Your print is in
a different league -
ie Premiership!'

**bollington
printshop**
sublime designs perfect print

CALLING ALL ARTISTS

Exhibition Quality

ARCHIVAL Giclée Prints

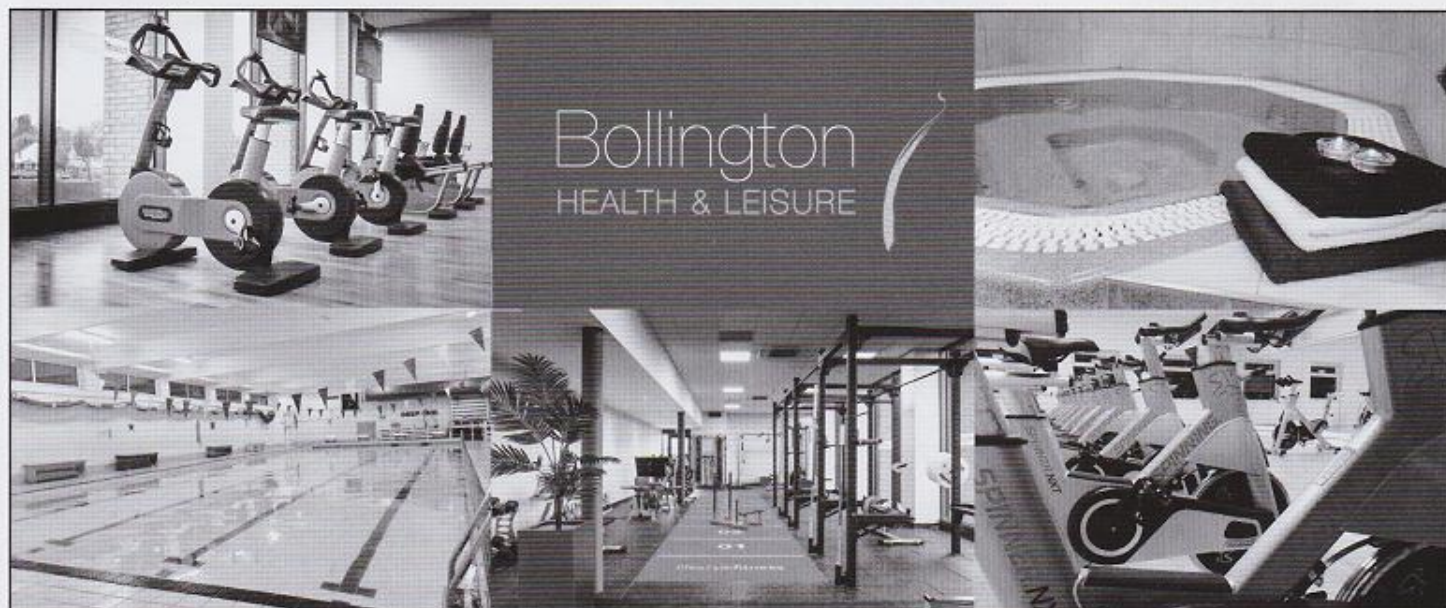
from your originals - We Care!

YOUR PHOTOS ENLARGED ON CANVAS

"HUGE thanks for the BRILLIANT job,
EXPERT advice and timely delivery"

tel: 01625 574828

www.print-and-design.com



Bollington
HEALTH & LEISURE

All this from £23.00 per month



FARMING AROUND

At the end of the 17th Century Bollington was still a series of farms and a cluster of farm houses and small labourers' cottages. The industrial revolution brought the cotton mills and growth to the town. Today new housing developments provide homes for families, many of whom work in Macclesfield and Manchester.

Surrounding the town are many farms, which are the town's rural heartland, mostly sheep farms in the hills. I visited a farm in Pott Shrigley and talked to the farmer, Harold Wainwright. Harold is the fourth generation of farmers in his family and farms 350 acres, breeding sheep. He built his farmhouse at Pott Mill Farm in 1997 and, as it is in the Peak Park, he had many regulations to comply with before it was completed.

The spring is a busy time for sheep farmers and Harold's farm is no exception. In addition to the land

adjacent to the farmhouse, Harold rents land at Norman's Hall and Birchencliffe.

Harold loves farming and could never imagine doing anything else. He has seen a few changes in agriculture in recent years particularly with all the paperwork expected nowadays. 'We used to be able to decide, one day to take some sheep to market, load them into a trailer and drive to the market in Leek.... not anymore. All the sheep are electronically tagged and there are strict government checks on their movement' said Harold.

Although paperwork is time consuming Harold sees the benefits for animal welfare and the benefit in stopping the spread of infectious diseases. Another worry Harold expressed, facing farmers today, is what will happen post Brexit if subsidies are lost. Harold remains positive about the future and obviously enjoys his job.



If you farm in this area, we would love to hear from you and feature your farm in 'Bollington Live.'



He is happy to show the lambing sheds to groups of guides, brownies and primary school children and they enjoy holding the baby lambs. He also welcomes would be vets on work experience during lambing time where they can gain some valuable experience.

He does think about the future of the farm. Harold has two sons, but it is unlikely that Lee will follow him into farming as he is busy brewing and selling excellent beer to slake the thirst of people in Bollington and Macclesfield.

At present Kym, his other son combines helping Harold with the sheep and brewing with his brother. So perhaps, after all farming is in the blood and another generation of Wainwrights will carry on farming.

Sandy Milsom

COMMUNITY HERITAGE GRANTS

The South West Peak Landscape Partnership Scheme, through registered charity Support Staffordshire, is seeking community organisations interested in running projects which will enhance, protect or celebrate the heritage and countryside of the South West Peak Landscape area.

The Partnership's Community Grants programme is funded by the Heritage Lottery Fund until 2020 and is offering grants of up to £10,000 to community groups and organisations including constituted community groups, registered charities, social enterprises, parish councils and schools who are working on projects that develop and promote the built, natural and cultural heritage of the area.

Grants Officer Sally Bentley said, 'The important thing is that the

project involves the South West Peak itself. We encourage groups to talk to us about their project ideas as many may not realise that their projects meet our objectives and are eligible for our funding – heritage is much more than old buildings, it includes wildlife, people and communities too. Organisations can apply for up to 50% of their project costs. But we can help you look for additional funding and donations.'

The Community Grants programme is part of the South West Peak Landscape Partnership Scheme which is supported by a £2.4m Heritage Lottery Fund Grant.

Sally continues, 'The deadline for the next application to South West Peak Community Grants is 9th October 2018.' **Sally Bentley**



Take a look at the Partnership's website www.southwestpeak.co.uk and if you would like to discuss your project or ideas please contact Sally Bentley or Ruth Wilson, on 01538 381356 or email sally.bentley@supportstaffordshire.org.uk or ruth.wilson@supportstaffordshire.org.uk

FESTIVAL NEWS

HAVING A BALL!

'We need something grand - a prelude to the Festival' said Betsie Dixon, the Festival's head fundraiser. 'How about a Winter Ball?'

The Festival hasn't done something like this before, but Betsie set to work in her tenacious style. Linking up with Paula Marshall, they decided that Shrigley Hall would be the perfect venue: 'Beautifully situated, it looks so smart' she commented.

After contacting John O'Reilly, the general manager of Shrigley Hall, Betsie discovered that, since a change of ownership, the hotel is keen to become more involved with the community.

'I'm hoping this will bring people together, making new friends, even from further afield than Bollington. It's going to be fun, but smart.' said Betsie.

At the Ball there will be a pop-up gin bar, a photo booth and entertainment from one of the Northwest's best party bands 'Groovy Revolution'. With Paula Marshall in the drivers' seat, the black-tie Ball at Shrigley Hall on the 24 November 2018 has gathered momentum with generous sponsorship from Holmes Naden and great prizes donated for the raffle and auction.

For advertising and sponsorship opportunities at this event please contact: bollfest2019@gmail.com



**10-27
MAY
2019**



Join the 100 Club

Name

Address

Postcode

Phone

Email

FESTIVAL BANK DETAILS

Name

BOLLINGTON FESTIVAL 100 CLUB

Reference

100CLUB

Sort Code

01-05-41

Account Number

39828107

Option 1 - Pay by standing order for £1 chances per month (minimum 12 months) until further notice.

Option 2 - Pay for £1 chances per month for months (minimum 12 months) totalling £

I confirm that I am over 16 years of age (please sign)

Signed: _____

Date: _____

HOW TO PAY

☐ **Cheque** - Made payable to 'Bollington Festival 100 Club'

☐ **Bank Transfer** - Please use account details to the right

☐ **Standing Order** - Please use account details to the right



Bollington Festival 2019

Please return this form (along with your cheque if applicable) to:
Bollington Festival 100 Club,
24 Birchway,
Bollington, Macclesfield,
Cheshire SK10 5NA

H O L M E S ~ N A D E N

I N D E P E N D E N T E S T A T E A G E N T S

Consult Holmes Naden for Property Sales and Letting Advice this Summer

Recent reports indicate that house prices have risen by 9% in a year. If you are thinking of selling your property, contact Holmes Naden, your local property experts, to discuss both your sale and your onward investment. Well established and trusted, our range of property from large prestige homes to tiny stone cottages changes daily, particularly during the Summer months. Our Rental market is thriving and we have a high demand for new landlords.

The quality of the properties and the way they are presented and marketed are key to attracting quality tenants and purchasers and achieving premium prices. All of our properties are directly matched to suit the individual requirements of tenants and buyers via email and text alerts immediately upon instruction.

Our Branch Managers, Janet Johnson and Ellis Pembrey, have excellent customer service skills, coupled with extensive experience and knowledge of the local area, which makes them a favourite choice for many local landlords and vendors. Their friendly and helpful Sales and Rental teams are busy seven days a week helping sellers, buyers, landlords and tenants alike.



Our high profile and attractive offices offer a warm welcome to prospective clients. We offer a bespoke service and, with attention to detail from start to finish, our customer care is second to none. So surely Holmes Naden must be your first 'port of call' when considering property!

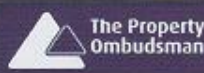
We provide a wide range of services for Rental and Sales. Please contact either Prestbury or Bollington office for a no obligation appraisal of your property.



THE VILLAGE
PRESTBURY
SK10 4DG
TEL: 01625 828254

16 HIGH STREET
BOLLINGTON
SK10 5PH
TEL: 01625 560535

lettings@holmesnaden.com
sales@holmesnaden.com





BOLLINGTON

live

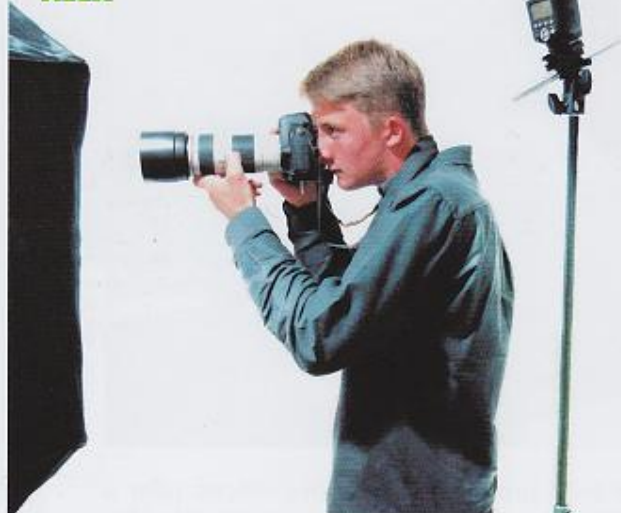
365,000 copies, 25 Years, 5 Editors, 73 Issues Only one printer: BOLLINGTON PRINTSHOP - Proud to produce *Bollington Live!* Tel: 01625 574828

EMBRACING SKILLS

Despite government plans to create three million apprenticeships by 2020, according to the BBC the number of apprentices starting new programmes in England has dropped.

Becky Reardon, Managing Director of Embrace, a Bollington-based marketing, branding and digital agency, shares her experiences of employing apprentices.

ALEX



'As a small business of six, we took the leap of taking on three apprentices. You might be thinking we were mad and at some points we'd agree! It is true that the three young apprentices had a lot to learn, including skills to carry out their roles and life skills that come with working in a business.

But we've never looked back. Why? Because we find raw talent and the right fit to be more important than experience. Whilst we have had to invest quite a bit of time into on-the-job training alongside college work, it's definitely been worth

it to have dedicated, talented individuals that embody our company ethos and values.'

Here's what Embrace's three former apprentices have to say...

'During my apprenticeship I've learnt an invaluable range of creative software and design skills whilst working on projects. I feel that this just wouldn't have been possible at university. I would recommend an apprenticeship to anyone - especially in the creative industry.' Alex Vann.

'When I finished my college course, I didn't know what my next step would be, until a friend mentioned becoming an apprentice. I have just finished the apprenticeship and it was the best thing for me to do! I have learnt so many key life and graphic design skills. I would recommend an apprenticeship to anyone who knows that university may not be for them!' Alice Wray.

'Doing an apprenticeship has completely opened my eyes to the real world. It has given me both professional and personal skills which I will have for life. It has also enabled me to become much more independent and to find my feet with my career choice.'

Becky Reardon

ASHLEIGH AND ALICE



CORPORATE SPONSORS OF BOLLINGTON LIVE!

Bollington Live! wishes to thank our local sponsors for their essential support. They have enabled our community publication to continue into its **twenty fifth** year.

The Adelphi Group Ltd.
Cutlers Cleaning Services
Bollington Health & Leisure

R. A. Smart Textiles
Bailey Business Park Ltd.
Bollington Town Council

Tullis Russell Coaters
Slater Harrison
Bollington Civic Society



BOLLINGTON

live