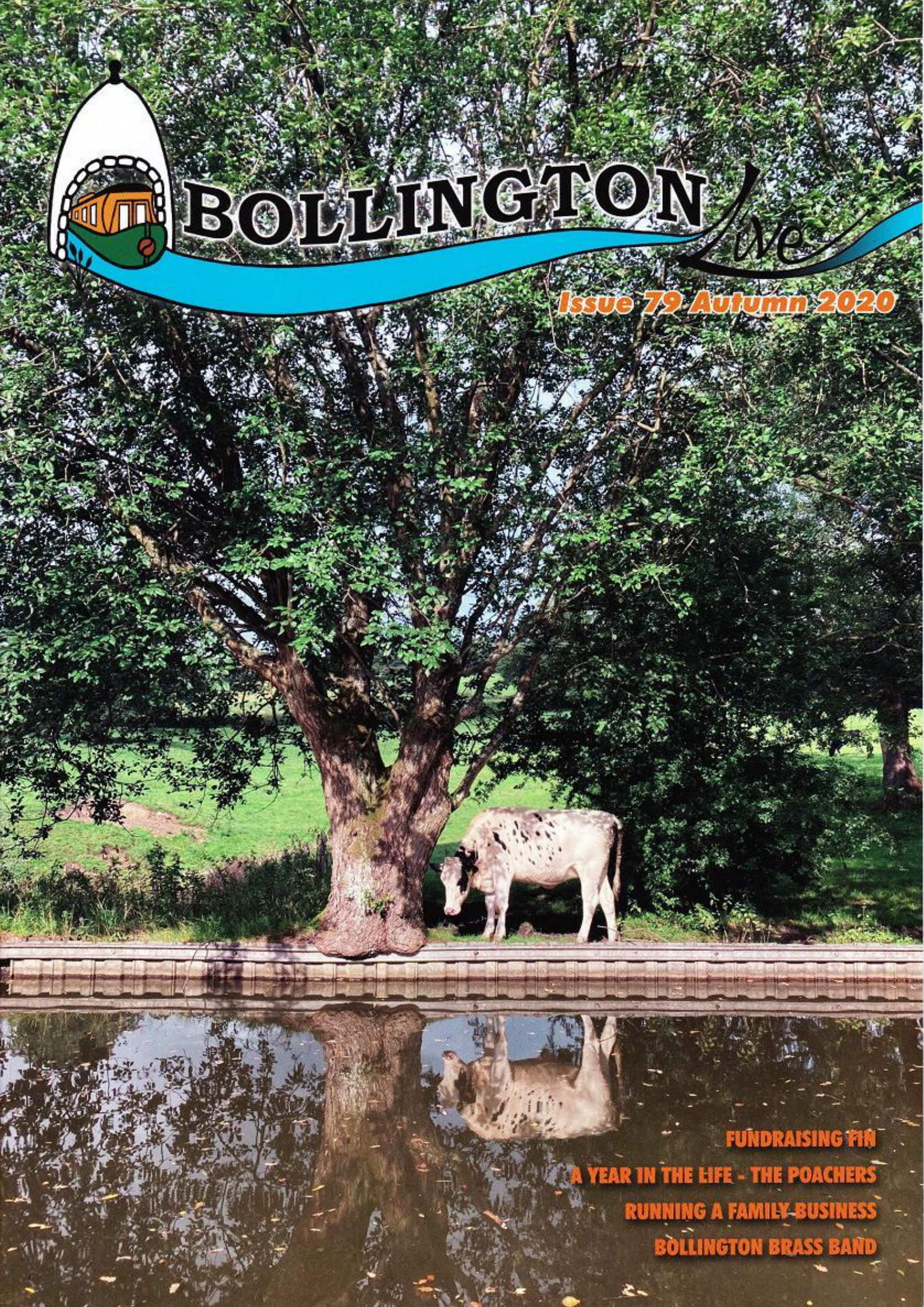




BOLLINGTON

we

Issue 79 Autumn 2020



FUNDRAISING FIN

A YEAR IN THE LIFE - THE POACHERS

RUNNING A FAMILY BUSINESS

BOLLINGTON BRASS BAND



BOLLINGTON BEAUTY

15% OFF
October and
November
Treatments

Bollington
HEALTH & LEISURE

Lifestyle
Fitness®

AutoTECH
CHESHIRE LTD

MOT & SERVICE CENTRE



Servicing
MOT testing cars & bikes
Diagnostics
Air-conditioning
Electrical repairs
Performance upgrades

Independent Workshop Specialising in the repair of
Land Rover | Mercedes | BMW | Porsche | Audi | Volkswagen

Tel: 01625 575223

Web: autotechcheshire.co.uk

LETTER FROM THE EDITOR

Thank you to everyone who worked so hard, at a distance, to make publication of this bumper Autumn issue possible! From our loyal advertisers and sponsors to our volunteer deliverers, everyone on the team has pulled together to deliver an upbeat, entertaining issue to rival any issue!

Without a single face-to-face contact – we normally enjoy at least 2 meetings per issue in the pub - volunteer writers, copy-editors, advertising contacts, the Printshop, the leisure centre, the deliverers and our advertisers and sponsors have all made this happen! Hope you agree it's a great issue!

It would not be right to forget to mention the past months and the great difficulties faced by both local businesses, some of which were shut for months, and people in our community. From those who have been gravely ill, to those living alone with no human contact for weeks on end many people have suffered through these strange times.

In an effort to support our local business for this issue we have asked some of them 'How was it for you during lockdown?' and 'How

as a community can we help now?'. Many businesses responded and you can read what they have to say throughout the magazine.

I myself have witnessed such kindnesses during this time; a young girl out running on the Middlewood way giving her mobile number to an elderly lady saying she could do her shopping, as they both negotiated a gate and started to chat. Chatter in WhatsApp groups about collection of prescriptions and deliveries of food when in the early days there were not enough delivery slots. Many local groups, the Bridgend for one, have set-up services for locals who might have been lonely or struggling to buy food. And let's not forget the Town Hall who swiftly gathered together volunteers for each street – notes were pushed through many a letterbox offering help. The list of good deeds is endless.

So, what now? Facing the dark days of winter, channel surfing on the TV I am reminded of one of my favourite programmes as a child – The Three Musketeers! Never in my lifetime have we been in need of their motto – All for one and one for all! Can Bollington act for the

"ALL FOR ONE AND ONE FOR ALL"



benefit of each person living here? And can each person in our lovely community act for the benefit of all Bollington residents? Let's hope so.

If you have any ideas for the next issue or any comments or thoughts you would like to share please email me: liveditor@happyvalley.org.uk

Annette

Date for next copy:
15th Jan 2021

YOUR TEAM

Editor.....	Annette Hurst	liveditor@happyvalley.org.uk
Design & Layout ...	Matthew Wray	
Editorial Team.....	Sandy Milsom, Janet Beech, Kevin Cass Hannah Atkin, Simon Nottage, Ken Edwards, Kate Gooding, Helen Wright, Claire Moreland	
Advertising	Simon Nottage (07411 521179) livedverts@happyvalley.org.uk	
Distribution.....	Janet Beech (01625 574618) livedistribution@happyvalley.org.uk	
Printed	Bollington Printshop (01625 574828)	
Illustrations	Matthew Wray	
Events	Vicki Cooper	livedates@happyvalley.org.uk
Front Cover.....	Miriam Beck	Cow admiring reflection on canal, Sept 2020

Bollington Live! is published three times a year on a non-profitmaking basis, with free distribution to households in the town. Under the editorial banner of **"Bollington Live! - A voice for everyone"** we aim to promote local concerns. The Editor cannot be held responsible for the opinion of contributors, the accuracy of the events listings, or the content of external websites referred to within this magazine.

Bollington Live! is an independent publication, published in association with Bollington Arts Centre & Bollington Civic Society. The copyright of all articles and images submitted remain with the respective owner(s) and all submissions are reproduced with grateful thanks. No part of **Bollington Live!** may be reproduced in any form without the express permission of the editor.

Back Issues: www.happyvalley.org.uk/live

HAVE A BUTCHERS

Barrows of Bollington: a very traditional butchers! Barrow's Butchers has been trading from the same shop at 1 Henshall Road, Bollington, Cheshire opposite Grimshaw Lane for 130 years.

The business was started by John Thomas Barrow who was born in 1856. He was the first Chief of the Bollington Fire Brigade and won medals for long service. He was joined in the butchers by his eldest son Tom. In those days deliveries were made by horse named Bob pulling a trap. The shop had its own abattoir in the yard behind, poultry were kept on what is now the car park with cattle grazing in a field which is now Ashbrook Road, Bollington. The abattoir has now been converted into a preparation area for sausages, burgers, etc.



Tom was succeeded by his eldest sons John and Reg and the business became Barrow Brothers. During the Second World War, meat was rationed, and customers had to be registered with the butcher to receive their meagre allowance. These were very difficult times and a little meat had to go a long way. In 1962 Reg's elder son John joined the business and was later assisted by his wife Rita. Their elder son Richard, who is now the present owner, was interested in the shop from a very early age and joined on leaving school when the business became Barrow's Butchers. Richard now runs the shop alongside his son Sam who has become the sixth generation of butchers.

At Barrow's Butchers, they pride themselves on being traditional

*Photos:
Richard and
Sam Barrow
at the shop*

*Bob the
delivery horse*



butchers, preparing everything on the premises from carcass to counter. Barrows supply a high standard of quality raw and cooked meat on the retail side through their shop which is open Monday to Saturday, with much of the meat being sourced from local farms. Also offered are cooked meats, freezer packs, eggs, jars and sauces, and much more.

They also supply several local pubs, restaurants, care homes and retreat centres. For the last 10 years they have supplied local primary schools with quality meat starting with Bollington, Macclesfield and Poynton and continue supplying these areas whilst also taking on the primary schools in Congleton and Wilmslow.

Joining the family business is Harvey, Richard's nephew and Sam's cousin who has just finished his apprenticeship and qualified as a master butcher like Sam. There are also another two highly skilled butchers, Simon Chapman, whose grandfather Bob Blackley worked there too, and Paul Willey, allowing them to boast over 100 years' butchery experience between them, and of course don't forget their loyal delivery drivers, John Lovick and Philip Rainey.

So let's congratulate this excellent family business, whose success we can judge from the queues waiting outside even in these difficult times.

Lynn Knowling



BOLLINGTON DEMENTIA ACTION ALLIANCE

Following our launch in October 2019, we had much support from a wide variety of people, which was very encouraging. These are strange times and many things we planned have had to be cancelled or postponed.

Our main aim is to spread awareness and understanding, and you can help by becoming a Dementia Friend. You can do a short session online via the Alzheimer's Society – it only takes about 15 minutes.

Hopefully Melanie, our Dementia Champion lead, will be able to run some virtual sessions or even better, as soon as it's safe to do so, will be able to recommence normal sessions in a safe environment.

We have restarted our fortnightly Coffee and Chat sessions at Holly's from 2pm to 3.30pm on alternate Wednesdays. If you are living with dementia, caring for someone or would like more information about our dementia-friendly group or just want a chat, then please pop in – you will be made very welcome.

And Holly's do make extremely lovely cakes!!

Gill Lancaster

FUNDRAISING FIN

I live near an inspiring young boy called Fin who, during the strange early days of lockdown, when few people left the safety of their homes, went running each day (with one of his parents, Sarah and Darren) to raise money for East Cheshire Hospice.

Each Thursday when the street was gathered outside our houses to 'clap' for the NHS we also clapped for Fin, who was clearly embarrassed by all the fuss!

You may have seen Sarah's updates on Fin's fundraising and the amount raised as she provided these regularly on Facebook.

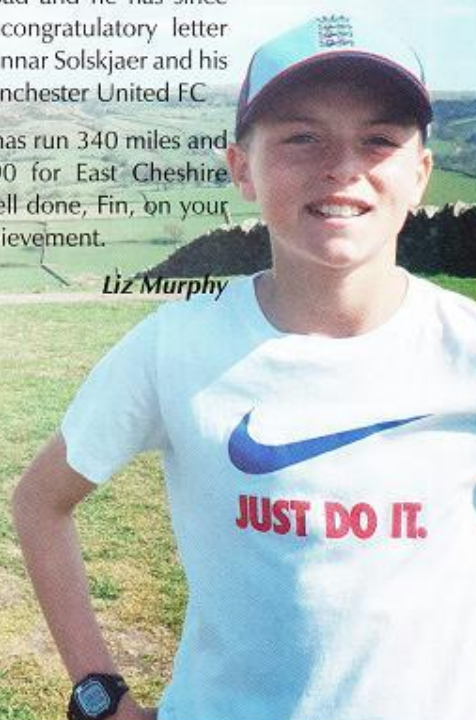
On 24 July Fin did his final run before a well-earned break for the summer. All the neighbours watched him depart with his dad Darren, and unknown to Fin the residents of Barnfield Road then put up bunting and banners and were ready with party poppers and refreshments to be enjoyed by all as Fin crossed the makeshift Finishing Line, hastily put up before his return.

Fin's final welcome home run was an absolute joy to behold, and a great 'socially distanced' street party followed in honour of our little hero, with pizza and fries being devoured by young and old alike!!

Fin's fame spread further than Barnfield Road and he has since received a congratulatory letter from Ole Gunnar Solskjaer and his squad at Manchester United FC.

To date Fin has run 340 miles and raised £5290 for East Cheshire Hospice. Well done, Fin, on your amazing achievement.

Liz Murphy



FUNDRAISING IN A TIME OF CRISIS!

East Cheshire Hospice relies on donations and income from fundraising events to keep going. During the lockdown period all the usual fundraising events were cancelled and afterwards many still had to be cancelled as they involved groups of people meeting together.

Fin acted after learning about the cancelled events, including 'splash out' which his family were due to take part in again this year.

Hospice Director Karyn Johnston said: 'We're amazed by the acts of generosity shown by the community during this difficult time. People of all ages are raising funds to help out and our message is to please keep up the good work. We need your support now more than ever.'

If you can support the hospice please visit www.eastcheshirehospice.org.uk to make a donation or join in with one of their virtual events.



East Cheshire Hospice
Where people come to live

BOLLY LOGS

We were closed through lockdown as although we could be classed as an essential business, we were worried about my wife Laura catching Covid as she has an autoimmune disease.

Financially we were able to cope due to the government grant and by using our savings, however that has left us in a financially difficult position. As a family though we coped by maintaining a routine, our new puppy arrived just as lockdown started so between her and home-educating the kids we were pretty busy.

One thing we needed to do during the initial lockdown was to make plans on how we could stay open

if another lockdown was to occur. We now feel we have a robust system in place to protect not only ourselves but our customers too. As with all retail places we are wearing masks and asking customers if they will too. Laura is no longer in the shop and for most deliveries will be accompanied by either myself or our member of staff.

The support we need from the wonderful community of Bollington is for them to tell people about us, share our facebook or instagram posts. If you come to see us please follow social distancing guidelines. We still accept cash but would prefer people to make contactless payments. Bear with us with regards to deliveries as we do have



a little less capacity than usual.

We are in the process of creating a range of homeware items from reclaimed and repurposed wood. If you have an idea of something you would like created please let us know.

Aaron Doherty

Established 1989

KELLICO INTERIORS™

RE-UPHOLSTERY & BESPOKE FURNITURE

Upholstery designers and manufacturers
Re-upholstery and restoration specialists
Visit our unique showroom

www.kellico-interiors.co.uk

01625 560434

sales@kellico-interiors.co.uk



Canalside, Clarence Mill, Clarence Rd. Bollington

BARROWS

TRADITIONAL BUTCHERS



Est since 1890

1 Henshall Road, Bollington, SK10 5HX. Tel: 01625 572110

DOOLEYS

Hi-Fi

For the **best Flat Screen TV**
and **Superb Hi-Fi**

106 Mill Street, Macclesfield Tel. 01625 264666
e-mail: sales@dooleys-hifi.co.uk www.dooleys-hifi.co.uk

THE BICYCLE REPAIR SHOP LTD

www.thebicyclerepairshop.co.uk

- ❁ WINTER SERVICING and repairs
- ❁ FREE local collection service
- ❁ New Builds and upgrades

E: deolebicycles@gmail.com

T: 07480 739350

City & Guilds Accredited Bicycle Technician



M. CHADWICK



NEWSAGENTS & LOCAL LOTTERY AGENTS



Home delivery of Newspapers & Magazines

Seven days a week

70 Palmerston Street

Tel: 572306

www.chadwicksnewsagent.co.uk

A D FIRTH & CO

Your Bollington Solicitors

Alan Firth LLB (Hons)
Principal

CONVEYANCING, WILLS AND PROBATE, POWERS OF ATTORNEY

Tel: 01625 261840 Fax: 01625 267597
Email: alan.firth@hotmail.co.uk

18 Spinners Way, Bollington
Macclesfield, Cheshire SK10 5HE



CHARTERED SURVEYORS
LAND and ESTATE AGENTS
AUCTIONEERS and VALUERS

2 Henshall Road Bollington Cheshire SK10 5HX
telephone 01625 575578
email bollington@michael-hart.co.uk

FREE Pre-sale valuations and advice
Full property letting and management service
Building Surveys, RICS Homebuyer Reports, Valuations
for probate etc.

www.michael-hart.co.uk



Also at 36 Park Lane, Poynton, Cheshire SK12 1RE 01625 876331

BOLLY LOGS



FIREWOOD & FUEL

t) 07759 244005

80 Wellington Road, Bollington.
LOCAL DELIVERY AVAILABLE.

Firewood & fuel supplies
for local homes and
businesses

KILN DRIED LOGS – SMOKELESS COAL –
KINDLING – ECO FUELS

MICHAEL RECEIVES COMMENDATION

A lovely bright, sunny afternoon in September certainly complemented Michael Chadwick's character and matched perfectly his award of the Bollington Mayor's Commendation.

Michael is admired by the community of Bollington not only because of his willingness to help others and for providing a good, reliable service but also because of the strength he showed recently through his own health issues. His continuous hard work, early mornings, positive outlook and supportive family kept him strong and set an example to us all.

I remember him saying, 'This is my life; this is what I do!' And well he does it!

You only have to look at how long his staff have worked for him to know what a great boss he must be! Pam Walters has worked in the Chadwick business for 42 years and herself was presented with an award.

Michael recognises and appreciates the loyalty of his customers and enjoys a laugh and a joke with young and old alike.

Be warned though, just sometimes you can end up leaving the shop with something you never knew you needed. Like recently, when

one unknowing husband came in to pay his paper bill and was told to take his wife an orange Twirl as it would make her very happy! Sold!

He certainly is one of Bollington's treasures!

Written by a friend



A YEAR IN THE LIFE



The year from July 2019 to July 2020 has been an unforgettable one for the owners of the Poachers Inn in Bollington, Rob and Helen Elwood. This year is their twentieth year as hosts of the pub and should have been a year of celebration. However, things have not gone according to plan.

The Poachers is a vibrant pub, usually busy and lively, a popular eatery, live music venue and home to a twice-monthly quiz, which has raised a great deal of money for local charities. Things changed at the end of July 2019 when torrential rain caused a culvert in Ingersley Road to collapse and a large hole in the road appeared.

The Poachers was one of the businesses affected and, although the pub could open as usual, the

road closure meant it was not accessible by car from Bollington. Traffic was diverted round Spuley Lane or people had to walk. Many could not find their way to the pub, and the meal trade in particular dropped from 25 meals each day to 2 or 3. The road closure lasted from 30 July 2019 until it finally reopened on 20 March 2020. Then, of course, Rob and Helen had to shut the pub because of the Covid-19 pandemic.

Rob and Helen took a very positive view. 'You have to always look forward', said Rob. And that is what they did. They used the time of closure to do lots of work on the pub. When I arrived to talk to them, both were wielding a paintbrush, smartening up the outside. They did takeaway food and beer and continued to have a weekly quiz on Zoom. This was always well attended, and the customers could enjoy a virtual quiz experience and one of Rob's devilish music rounds. It kept the pub in the hearts and minds of the locals. With a view to a return to a 'new normal', Helen and Rob instigated

a scheme whereby customers paid for a £25 voucher to be used with a discount in the future which was very successful.

From July the Poachers has opened with Covid safety in mind and social distancing in place. The beer garden has provided a pleasant outdoor space and the Eat Out to Help Out scheme has kept the pub busy, and gradually things are beginning to return to normal, although the quiz is still on Zoom.

This has been a challenging time for the hospitality sector in general, and with the added challenge of the roadworks for many months it has been a huge problem for the Poachers. Let us hope that along with all the other fabulous hospitality businesses in Bollington, the Poachers can overcome the troubles it has faced and look forward to a better future. Rob and Helen are, as always, upbeat, and we hope that they are able to celebrate their twenty-first year at the Poachers in great style!

Sandy Milsom

HISTORICAL PLAQUES

You may or may not be aware of it, but if you are residents of Bollington you should know that within our small, intensely developed town, which some people still think of as an industrial village, we have one of the most concentrated collections of splendid eighteenth- and nineteenth-century industrial architecture in the British Isles, recognised by our previous Cheshire County Council for its deep historical significance.

These range from small individually built mills like the Defiance on the corner on Queen Street all the way to the mighty structures of the Clarence and the Adelphi dominating the Bollington skyline with their mighty bulk, and in the case of the Clarence Mill its huge chimney built in the early twentieth century. There have been well over 250 years of continuous industrial production at Tullis Russell and Slater Harrison, still going on today, while a new postmodern group of entrepreneurs operating in small units in the Adelphi Mill or sometimes from an adapted room at home generate wealth through the use of the World Wide Web.

To celebrate our industrial past and to inform our residents and visitors, Walkers are Welcome



and the Bollington Civic Society have combined with the Bridgend Centre to produce a series of Guided Walks around our Town. The first, labelled The Best of Bollington, appeared last year; a self-guided walk around the Town for anyone who wishes to get a feel for the past.

Now we are more ambitious; we plan to set up 11 historical plaques initially and create walks connecting them together to tell our town's story. The first that we hope will catch the eye before Christmas is not in Bollington at all but in Ingersley Vale in Rainow (though now, in the latest Cheshire East Plan, scheduled to be in the Bollington Settlement Area).

Ingersley Vale provides the introduction to a classic local walk starting with the new building site with 11 houses on the former Tullis Russell Bowling Green nearing completion and the three traditional stone cottages before reaching the bulk of the ruined mill itself destroyed by fire. You walk past the now empty wheelhouse and on the wall opposite we hope to place our Heritage Plaque telling the history of the mill's long years of productive activity. The walk continues up the valley past Waulkmill to the waterfall and on

across fields to Rainow and back along Smithy Lane and Oaken Clough to the bottom of Blaze Hill.

We are preparing 10 further plaques to commemorate, amongst others, the heritage of the Clarence and Adelphi Mills, Bollington Gas Works, Bollington Hall Farm, Lowerhouse Mill and the great transport links provided by the aqueduct and viaduct. We hope by introducing an element of explanation and education into our landscape to engage visitors and residents alike in the long productive history of our town and contribute to the justified pride we feel in our community.

We are supported by a generous grant from Bollington Town Council and the expertise of Tunncliffe Signs, and our own efforts and knowledge. I must thank Chris Kettley for her tireless work with Tunncliffe's on the design of the plaques and we hope they will contribute to the enjoyment and understanding of our very special historical environment.

Ken Edwards

VALE INN

The Vale was closed during lockdown, but we reopened in August with new procedures and a new way of working. Our online ordering facility (nothing to download) allows you to sit in the beer garden and have food and drinks brought to your table. Payment is taken by the app and your food is brought in street food-style boxes to make sure staff can work more effectively, the handling of crockery is reduced, and service is more efficient.

Inside the pub, table service is now the norm and the app is also available there. We definitely need more customers, especially as the weather turns and people move to sitting inside, and we don't have the extra capacity of the beer garden. It would be good if

people also changed their routines and came to visit us at different times – early in the week and/or in the daytime – to fill these quieter periods, rather than the traditional Friday and Saturday nights.

We are also offering a click-and-collect food and drink order system via our app:

<https://valeinn.gogomenu.co.uk>

We would like to thank everyone who has shown their support for us over the last few months.



JOHN PLEETH (1940-2020)

John was born in London on 10 July 1940, the first day of the Battle of Britain. After their house received a direct hit from a German bomb, his mother Lydia moved John and his sister Barbara to Bollington. John's father, Harry, had already moved to Bollington a few months earlier as the company he worked for making electrical coils for Spitfire fighter aircraft had been relocated to the area after the original factory was bombed.

Bollington had been chosen as the new factory location as it was thought that the local people, used to handling cotton in the mills, would find it easy to adapt to working with fine copper wire.



Mary and John Pleeth

The Pleeths moved into Byways, Ridley Road, Lowerhouse in Bollington and John grew up next door to his friend Harold Skelhorn, with whom he had numerous adventures. The boys spent many happy hours trawling the tip (then situated near the Waggon and Horses) searching for pram wheels to make trolleys (or go-carts as we might call them today) to race down Moss Brow at breakneck speed!

At the age of 7, John sadly lost his right eye playing bows and arrows with his friends. He didn't let this injury stop him, though, and went on to successfully learn to drive as well as mastering many other skills.

John always loved motor cars. His father had an Austin 7, which the family used for many day trips and visits to family in London. When John left King's School he was determined to go into the motor industry. He was fortunate enough to be offered an apprenticeship with the Austin Company at Longbridge in Birmingham. This was a very happy time for John, and he made several lasting friendships at Austin's which he valued greatly. While at Longbridge John met Mary, who later became his wife.

In 1963 John moved to Connolly's Cables in Blackley and lived back in Bollington with his parents. After their wedding in July 1964, John

and Mary lived in a flat in Macclesfield before moving to Tytherington. John changed jobs to work for Frido (doorbell and doll makers) in Reddish, and then in 1968 took a job at ICI (Pharmaceuticals) in Macclesfield. He stayed with ICI (which became AstraZeneca) for the remainder of his paid working life.

Daughters Anne and Rachel were born in 1968 and 1970, respectively. John was a great family man who spent a lot of time with his girls and was always incredibly supportive of their hobbies and dreams. He was very practical and built super dolls' houses, sit-on trucks and farm and train sets for the girls, who enjoyed endless hours of fun with John's creations. John was also a whiz at home improvements, and of course his mechanical engineering skills were put to good use as he spent endless hours rebuilding his Morris 1100 (RLG 923D) in the garage.

In 1965 John joined Macclesfield Round Table, where he enjoyed assisting with numerous community events. Once he reached the age of 40 he, with many of his fellow Round Tablers, went on to the 41 Club, where he retained several close friendships for many years after being taken ill.

John became a magistrate in 1976, specialising in the work of Youth Courts. He had a great sense of treating everyone fairly and was known for being polite and calm. He was recognised as bringing life experience to the courtroom and, following his redundancy from AstraZeneca, John was able to spend more time as a magistrate, which he greatly enjoyed.

Scouting was always a big thing in John's life. He was scoutmaster of the 2nd Bollington Scout Group for many years and he especially loved activities such as the lads and dads' camps that he initiated, and spent endless hours at the Scout Hall on Albert Road.

John loved hill walking and mountain climbing. John walked the children miles each day over hills and mountains in the Lakes and Peak District. All the children recognise



that John was responsible for their love of the outdoors, even if not all of them quite shared his passion for camping!

John was sadly diagnosed with early-onset Alzheimer's in the early 2000s, and typically apologised to the family for having it. Despite the disease John still lived life to the full for several years. As he started to deteriorate, he continued to enjoy going out walking, thanks to his many friends who took him, and continued to attend the Austin Ex-Apprentice annual dinners with his great friend Gray Wenham until he could no longer travel safely.

John and Mary moved to Bollington in 2006 and John would often walk back to Lowerhouse and call at his old home and visit childhood friends there. Mary would get a phone call to say John was safe, having a cup of tea – but might need a lift back home!

In 2006 John's first grandson, Matthew, was born, soon followed by Tom later that same year. Then in 2009 Lewis arrived. John was very proud of his grandsons, but sadly they didn't get much chance to spend time with him before his illness took a real hold.

John and Mary celebrated their 50th Wedding Anniversary on 25 July 2014 with their family, but shortly after this John needed full-time care. He was well looked after at Lyme Green, and then, as his needs became more demanding, moved to Hollins Park Care Home which did a fantastic job in supporting him until he sadly died on Thursday 11 June 2020.

Anne Pleeth

CORONA RAMBLINGS

Not so long ago I came across a really inventive way in which one business has managed to keep going through the last turbulent months. Some of you might have experienced it too – an ingenious pulley-and-drainpipe system to ensure safe purchases of hot drinks, snacks and ice creams. The inventor is one Andrew Bailey, who runs Bailey's Trading Post on the Macclesfield Canal (baileystradingpost.co.uk). It was actually his assistant Nige – in the background of this photo – who explained it all to me and my friends.

This got us all thinking about other innovations which Bollington has come up with to keep going. Right from the start there has been the Bollington Resilience Action Group on Facebook and, as you'd probably expect, lots of help available from the Town Council (communitysupport@bollington-tc.gov.uk).

Then there is the wonderful Bridgend Centre, where Rebecca

Lea has been overseeing the weekly production of a very newsy newsletter called Bridging Social Isolation. Many of us have been taking the opportunity to have a good sort out in our homes, and if you go to bridgendcentre.org.uk you can book a slot to drop off pre-loved clothes and possessions for their charity shop, which is an amazing resource. Check out their website, too, for other recent updates about walks, etc.

Since the lockdown Bollingtonians have clearly been continuing to support all the local businesses, pubs and restaurants as best they can, and eating 'al fresco' has been hugely enjoyable. Tapa even erected a gazebo on their flat roof to maximise the fresh air during the height of the summer.

There has also been the Bollington Scarecrow Festival of course, and the Bollington Lockdown Horticultural Pop-Up Show 2020! On Water Street every Thursday evening (at 7pm now) saxophonist Neil Shaw-Hulme has continued



his wonderful music-making.

Readers will have their own examples, I am sure. We don't know what lies in store for us over the coming few weeks and months, but I am certain we can all agree that Bollington continues to thrive as a community. We will come out of this even stronger than before (and I bet Christmas won't be entirely 'cancelled' in Bollington!)

Claire Moreland

CIVIC AWARD FOR HELEN

It was a great privilege to present Helen Sheldon with the Bollington Civic Award (the Shuttle). This is to recognise those who have made a significant contribution and a difference to the residents of Bollington by showing outstanding service for the benefit of the Community, on a voluntary basis.

Helen has worked on a number of charitable fundraising events and awareness campaigns.

For example, Helen, supported by her husband Stephen and Chris and Carolyn Thompson and others, was the driving force behind the Name the Lamb fundraiser. Her energy, perseverance and force of personality made it the success it is today.

Helen's amazing work to support Prostate Cancer UK, Maggie's Cancer Support Centre (The Christie), Alzheimer's Society and Bollington Dementia Action Alliance are fully recognised and rightly celebrated.

Raising awareness is a very important part of Helen's work. For example, about Maggie's Cancer Centre at the Christie hospital that has been beneficial to the residents of Bollington.

More recently, Helen has thrown herself into various Alzheimer's initiatives within the Community and is a wonderful support to her mother-in-law Sheila.

Helen's humility is a lesson for us all. She has gone about her business selflessly. Not wanting



any thanks, Helen has changed the lives of many people for the better. Please raise a glass to salute this wonderful lady

John Stewart

RUNNING A FAMILY BUSINESS (DURING A PANDEMIC)

'Print is dying', 'You've never run a business before' and 'The first two of years will be a rollercoaster' were comments made when Matt and I decided to take over Bollington Printshop in 2018. Nobody said 'You'll have to make sure you can survive a pandemic'!

The evening Boris Johnson announced lockdown, I just cried. We'd spent 18 months building the business up to be ours. Matt is the more rational one! We decided to keep going and the only way to do that would be to lock him in – a very rational mindset!

The first couple of weeks were rough. Matt spent every day at work alone trying to do the job of 2+ people by himself; I spent every day at home working, home-schooling the kids and looking after the dog. Matt would come home wanting to talk as he'd had silence all day, but all I wanted was a bit of peace and quiet!

By Easter we were done in – it had only been a couple of weeks! Then Matt commented on a Twitter post made by Johnny Vegas – two weeks later, socially distanced, Johnny Vegas was at the door collecting



area. That week, bunting saved our business!

As a way of saying thank you to the local community, we ran 'challenge Matt': people wrote in with their requests and Matt created them. We had everything from 'a drawing of my dog' to 'White Nancy in a cape' and 'Donald Trump having dinner with Coronavirus'!

Over the last few months we have been missing working with businesses and couples excitedly needing stationery for their weddings and other big events. However, we have been loving working with artists who have been so busy during lockdown and are now getting their work out there for



others to enjoy. In fact, we enjoy working with them so much we have set up a gift area in the shop full of their beautiful prints and creations.

The other thing nobody ever told us when we took over the business: it's all about community spirit. We are so fortunate to have had the support of our community, and we hope the community enjoy the support we aim to provide in return.

Vikki Wray

BOLLINGTON BREWING CO.

After closing for a few weeks at the beginning of lockdown, we started a beer home-delivery service. Orders could be placed online for bottles, beer boxes and mini-kegs, and all deliveries take place on a Thursday. This service continues, despite pubs now being open, and it remains very popular.

We also took the time during lockdown to reorganise the brewery, a process we started in January but hadn't had time to finish. If you like beer but still feel you don't want to go to the pub, then please use our

delivery service. We have a variety of stock, delivery is contactless and free and you can order online very easily.

www.bollingtonbrewing.co.uk

We'd like to thank all the people who have supported us throughout the last six months!



Thanks to Matt at [instagram.com/bollingtonprint](https://www.instagram.com/bollingtonprint), the limited edition prints (with all proceeds going to [@whosospice](https://www.facebook.com/whosospice)) are mounted & ready to be signed & posted. Loving your work mate & I have just the space picked out for my added bonus portrait. Cheers mate!



his artwork! It gave us the ray of light we needed, and then a week later somebody mentioned they needed bunting and word soon spread! We spent three days working 7am–7pm printing VE Day bunting for customers all around the Bollington and Macclesfield





Our focus is you

As your trusted Independent Estate Agent,
we pride ourselves on exceptional service.
Our look may have changed, but what drives
us hasn't because **our focus is you.**

harveyscott.com | 01625 576222

Strange times... but
same exceptional service



jamie robins
BESPOKE INTERIORS

Beautiful kitchens, bedrooms
home offices and wine storage
individually designed and
handmade by local craftsmen.

01625
560700

jamierobins.co.uk



A WEEK OF THE WALKING BUS

Bollington was voted the best place for families to live by the Sunday Times, so surely it must be easy to walk your children to school in this country-village idyll. Spurred on by my son's unfailing determination to 'save the planet', I decided to give it a try.

One of the many advantages of working from home means I have spare time that would normally be spent commuting, so I wanted to put it towards the greater good of the community by starting a walking bus for my son's class. Before I polish my halo, though, I must admit it is not an entirely unselfish act. I am also hoping to make him less dependent on me. The weather is also on our side as so far, and September feels very summery. But every parent knows the worst of the weather always comes in August, when the kids are on holiday!

Day one – mild euphoria

The first walk is a veritable success. The children are delighted to see each other after lockdown and have some freedom. All timings go like clockwork. It is a walk with military precision, so there is a sense of relief and joy when others show up on time on designated corner spots.

7,365 steps before 9am.

Day two – waning enthusiasm

Another girl joins us in shiny new shoes that start to hurt a lot half a mile in. We meet up with another dad struggling to walk there with two children who want to go at very different speeds. The youngest one, who has just started in reception class, also has new shoes that hurt. How to politely pass people walking more slowly without stepping out into ferocious traffic from very narrow pavements? Barking 'shift out of the way' is tempting, but not the way people behave in Britain's most family-friendly village!

Day three – cop-out

I am persuaded to drive to school as my son's tired and it's raining. I give in, feel guilty. I would feel guilty

either way. A 4-mile round trip 5 days a week is 20 miles a week, before any other sports activities. They have PE at school today, which means an extra bag to carry and extra fatigue for their little legs. 'When we were young, we always walked to school!', I hear you cry. It's a different world now.

Day 4 – Disillusion

Delivery vans blocking narrow pavements near school, outside the butcher's. Busy garage, construction site (of the new Sainsbury's Local that all the locals campaigned against but will no doubt use). Black fumes smelling of burnt rubber from a lorry that brushes past the whiskers on our skin. The kids start to notice all the smoke coming out of the queue of cars gathering in front of school and get annoyed that they are breathing it all in. Why is everyone being driven to school? No one is walking or coming on public transport – everyone has their excuses. My 'walking bus' group of kids is starting to get quite militant, while I am starting to feel quite disillusioned.



When did a simple thing like walking to primary school become so dangerous and unhealthy? What does it take for this to change? Whose responsibility is it – the council, the school, the parents? What is more dangerous, speeding traffic, polluted air, or a society of unhealthy, unfit children?

Kate Coyne



TYRZ

With the support of local Bollingtonians we have managed to remain open during these difficult times. We are extremely grateful for the loyalty the town has shown to us.

We managed to look after a number of key NHS workers and some vulnerable members of the community by operating remotely with our mobile vans.

We are not out of the woods yet and we will continually strive to keep our customers and staff as safe as possible as we move into the winter months.

Many thanks, people of Bollington!

Andy Richie

THE BRIDGEND CENTRE ... HERE FOR YOU

2020 has been somewhat different for all of us; life has changed and has continued to do so, bringing a sense of uncertainty and the unexpected. In March the Bridgend Centre made the difficult decision to close its doors in order to respect government guidelines and to protect the safety and wellbeing of people in the community.

We pride ourselves on being an important part of Bollington and understood that although we could not physically be open we could continue to do what we do best, to offer support at a time when people needed us most.

It was an unusual start to the year for us, even before the global pandemic. After careful planning and fundraising, essential repairs to the Bridgend Centre began in January and were scheduled to be completed in March. This was all made possible because we had purchased the building in December 2018, fulfilling our dream to secure it for the Bollington community for the future.

Following this work, we were all set to reopen in mid-March when the lockdown period started, which meant that we had to remain shut for several more months. In total we remained closed for a period of seven months. This was a huge blow to us, but we were not going to be defeated.

We now have a new flat roof to the rear of the building, much needed



insulation, a new door and window in the Education Room – and windows in the shop, which have created a light and airy feel and show off our fantastic veranda. We also have new fixtures and fittings in the shop, which have created much more space.

When lockdown began, we recognised that we needed to continue to be there for our community, even if we couldn't physically, as so many vulnerable people rely on the Centre. We set up a temporary telephone number to allow us to be able to offer emergency advice and signposting services while the building was closed.

We also wanted a way of keeping the community connected and informed, hence the first edition of Bridging Social Isolation went live on the 27 March. To date 23 editions have been produced and we continue to publish this every two weeks as the world is still far from normal.

Bridging Social Isolation aims to provide all the essential elements of the Bridgend Centre in the form of a newsletter. It provides vital sources of information to help members of the community through the lockdown period, providing interesting articles, local history, recipes, puzzles, games and reviews to keep people entertained. Bollington Town Council very generously agreed to print paper copies which were delivered to the vulnerable and those shielding, who weren't able to access it electronically.

We kept the Bridgend flag flying high during the lockdown

period, not just by producing our newsletter, but by also identifying ways of trying to continue to deliver our services and activities. We continued to support our fantastic team of Bridgend Buddies to enable them to carry on offering companionship, and new and safe ways of communication were identified to allow the project to carry on. The Bridgend Choir and Spanish classes have now taken to Zoom, which allows its members to continue to meet, and we also created a support group for those 'shielding', again by using Zoom.

The Bollington Nostalgia Hill Race was not beaten by lockdown, with fantastic support from a professional fundraiser who was on furlough from his usual role at a charity in London – a virtual race was born for 2020, and what a success it was! The event raised over £2,000, which is truly amazing. We were so pleased this iconic Bridgend event could continue, and the change in format encouraged more participants, which helped to widen our profile, therefore really helping to spread the Bridgend message.

We were so pleased to reopen the doors of our charity shop in mid-July following the ease of Covid-19 lockdown. The shop is well known in the community as a treasure trove and we have been blown away by the amount of wonderful donations we have received. In order to protect our visitors, team of volunteers and staff have implemented changes in order to observe social distancing guidelines, but we feel we have preserved the warm and friendly welcome for which we are so renowned.

The famous Bridgend kettle in our community café is sadly having to take a break for the moment – we appreciate it is being missed, along with our delicious cakes and treats. We are working hard



STRONGER TOGETHER



to make sure we can secure our future so we can resume all our regular activities and events when it is safe to do so. Bridgend walks started on Wednesday 16 September, which is great to see. The groups are fully compliant with new social distancing legislation.

The success of the charity shop is paramount to providing financial stability for our charity and to ensure the building remains for the community for many years to come. May we take this opportunity to thank all of you who have donated your much-loved items to us and of course to those who have visited the shop and enjoyed making purchases. We must also thank our army of volunteers, who are involved in so many aspects of Bridgend life – from helping in the charity shop, Bridgend Buddies, Workshop, eBay and to our board of Trustees who support the Centre Manager and dedicated staff.

We had planned for 2020 to be a significant year for the Bridgend Centre – as it was going to mark our 30th birthday and honour our achievement at delivering vital services to the community. We hoped to celebrate this by holding 'Bridgefest', a festival championing all things Bridgend. We have now rescheduled it and hope to be celebrating with you on 15 May 2021.

The opening hours of our shop are currently Monday to Friday, 10am to 4pm and Saturday, 10am to 1pm. If you wish to donate goods for us to sell, please go to our website and book a slot. This allows us to manage the volume of donations we receive and also the quarantine process. Thank you.

Anna Hatley

During lockdown, have you used your local butcher, baker and candlestick maker for the first time? Are you still using them?

More than ever, businesses need their community, the community needs those businesses and the businesses need each other!

With restrictions becoming a part of everyday life, keeping personal and business life local ensures that the restrictions do not become restrictive.

Without business at the heart of it, Bollington would become a satellite town.

Staying local is not just about using those businesses you can see along the main streets. There are hundreds of businesses in and around Bollington that can support you or your business on a daily basis.

Take a look at our directory: www.lovebollingtonbusiness.co.uk – you will see that there are both personal and professional services. Of course, there are far more businesses than just those in the directory; why not hunt them down? Using local means you can easily access the service, face to face (with guidelines in place), without having to go glassy-eyed on Zoom, and nobody wants a bad reputation locally so you are almost guaranteed an excellent service.

Love Bollington Business is striving to get businesses together and thriving once more. As local business owners ourselves, we understand how hard it has been to run a business throughout a pandemic and that the difficult times are far from over – in fact, in many ways they are only just starting.

The expectations of business have gone back to 'before', but businesses are working very differently now: often understaffed but with more



LOVE BOLLINGTON BUSINESS

responsibilities; working longer hours with fewer breaks and definitely no holidays; and in many cases not just making money for now but trying to make profit for all that has been lost this year, whilst also considering what the future holds.

If you are a local business owner or professional looking for support from others, why not join us? You can find more details on our website.

By using the resources of other businesses on our doorstep we can work together and make each other stronger.

Vikki Wray



J.J.J. HEATHCOTE LTD.

Wholesale Butcher & Cattle Salesman

Palmerston Street, Bollington 01625 572202
114 Wellington Road, Bollington 01625 573172

From our own LOCAL FARMS for BEEF, PORK & LAMB

RENAISSANCE FUELS

BOLLINGTON WHARF

Grimshaw Lane

Calor Gas - Solid Fuels - Logs - Red Diesel

Regular, reliable delivery throughout Cheshire

07791 345004 / 01625 575811



9 Grimshaw Lane, Bollington

Tel: 01625 572495

Mob: 07963 252898

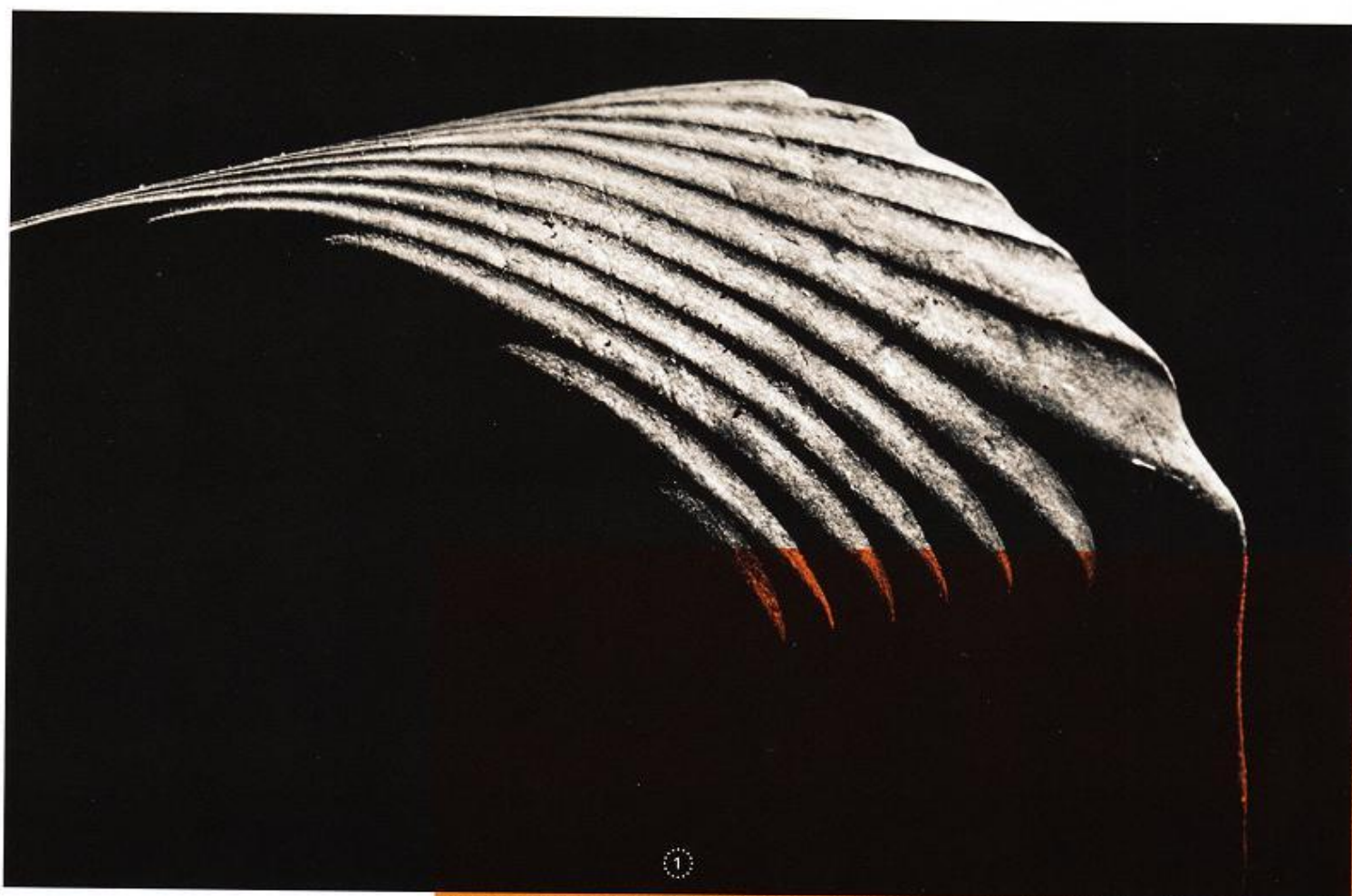
OAP's rates Tues & Wed

It has been a pleasure to collect an array of my photographs for this issue of Bollington Live.

As a designer, my camera is a vital part of how I appreciate and record what is special about every day – whether it is the beauty of nature, abstract shadows created by sunlight, or a star-filled sky late at night. I use Instagram to share my photographs and thoughts I associate with them. If you would like to see more, please feel free to visit

[instagram.com/visualsense](https://www.instagram.com/visualsense).

Through the eyes of the beholder



For those of you who may be interested, I capture my photographs using a FujiFilm X-T2 DSLR camera with a variety of lenses, such as the Samyang f2.12mm, Fujinon f1.4 35mm and Fujinon f2.8-f4 18-55mm.

All of the images shown here and on my Instagram page are available as high-quality photographic prints. For enquiries, please e-mail hello@visualsense.com.



Contrasting perspectives ...

I see things in a very graphical way. This is certainly the case when I capture photographs. I pare-back what I see until I simply discern shapes. An influence upon this is a book called 'Light and Color in the Outdoors', by Marcel Minnaert. It tells us how to appreciate the interplay of light and shadow – sprinkled with scientific understanding.

However, it is pure aesthetic beauty that I look for. In this object I saw a majestic sculpture. It is in fact a wooden post on a stile. The sculptor here is Nature, along with help from countless human hands, which have helped to smooth its surface.

1

Double-take ...

I set off on an Autumn adventure to seek a less-than-obvious view. Imagine yourself as a field mouse foraging for your lunch, and stumbling upon this juicy apple. At first glance this might be what you see, but this is not an apple, but a sun-ripened hawthorn berry. Seeing something smaller than a fingernail in unfamiliar detail plays an unusual trick upon the mind – we use our everyday experience of similarly coloured and shaped objects to make sense of what we see. It is only when we look closer that we can question our perception.

2

Enlight(e)ning ...

As I watched the evening light fade I looked out of my kitchen window in Kerridge to see subtle, but crazed lightning towards the South-west. I hurriedly gathered my camera and kagool (!). The lightning and thunder was nearly continuous for what seemed like hours. I was transfixed. My only complaint is that the lightning was more-or-less all cloud-to-cloud variety. However, the full glory of Nature's force was most certainly seen and felt on a number of occasions.

3

Slow flow ...

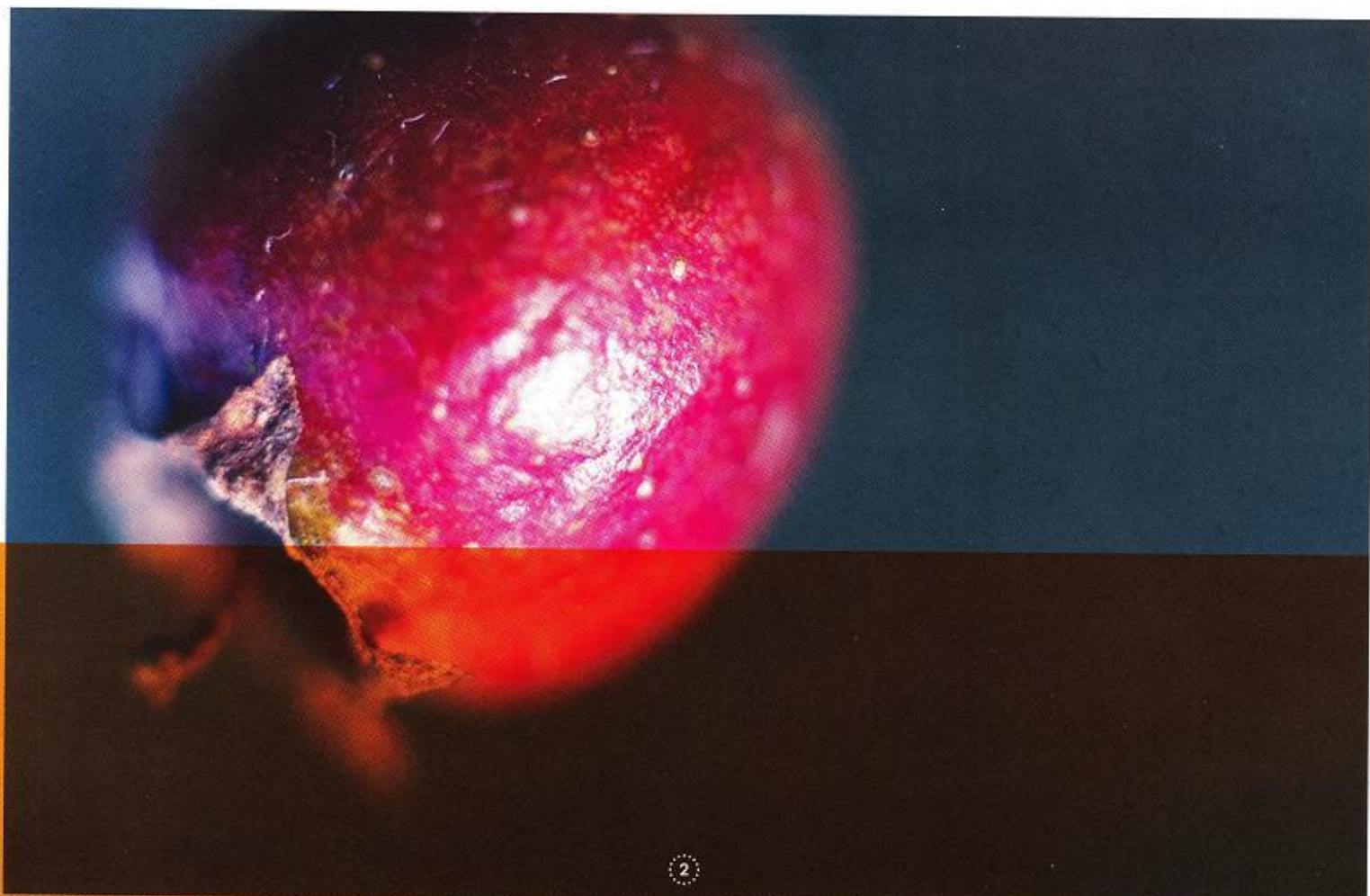
The forecast was for rain, so I decided to have a quick wander on to Kerridge Ridge before it arrived. It was rather chilly and the air was still. Upon my return as I walked towards North End Farm, snow began to fall. It was utterly joyful to watch – so graceful and meandering. It instantly transported me somewhere magical. Seeing the mesmerising slow-motion flow made the moment seem endless, and the gorse in full-bloom set an otherwise monochrome scene alight with colour.

4

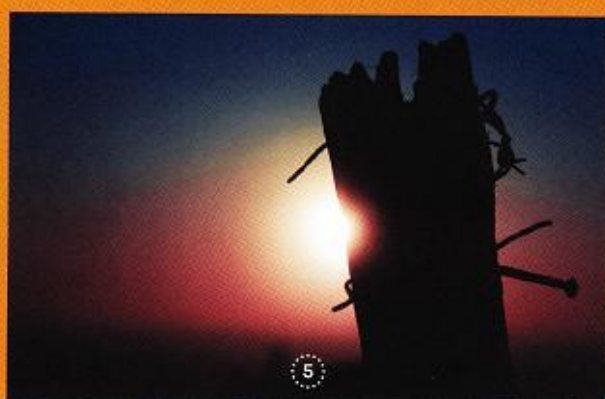
Gold does not always glitter ...

The world of design can be fickle. It is not entirely dictated by aesthetics, but on surface value, we often judge a book by its cover – as the saying goes. Take this gnarled post on Bakestonedale Moor. Ordinarily, you might just pass it by. But as the light began to fade during a particularly beautiful sunset, it stopped me in my tracks when by chance it eclipsed the setting Sun. In an instant the post's appearance softened, and for me at least, it became an objet d'art. With this in mind, maybe we shouldn't be too quick to judge a book by its cover after all.

5



2



5

SKIN AND HAIR CARE IN WINTER - HOME REMEDIES

As it's nearing winter and the days are becoming colder, our skin and hair need even more attention as the weather and heating can really dry us out. Below are a few tips and easy home remedies for keeping skin and hair soft and supple. They work for men and women, so there's no excuse for anyone to be complaining about dry skin and brittle hair!

Skin

It's important to always moisturise after washing as soapy water strips skin of natural oils. A good moisturising lotion immediately after bathing will replenish your skin with moisture and will help avoid dryness and flakiness. As lotion is usually water-based, it can be easily absorbed by the skin, which is why it is so good at moisturising. If you want to go a step further to ensure moisture-rich skin, apply an oil after the lotion to lock in the moisture. Since oil is not typically absorbed by the skin, it sits as more of a protective layer on top of the skin and seals in all the moisture. A heavy oil like coconut oil is good before bed to wake up with supple soft skin. If showering in the morning, however, a lighter oil like jojoba is good to rub in

before getting dressed. Applying lotion every day and an oil maybe once or twice a week is sufficient to keep skin looking glowing.

Recommended: Happy Holistics Organic Body Butter; available online at Peace With the Wild.



Lip Exfoliator

Dry, chapped lips are the worst, especially in winter when cold air and dry heating irritates delicate skin. Amongst others there are two easy ways to remedy chapped lips. The first, really easy one is to use a soft toothbrush and use small circular motions to gently exfoliate the lips and remove dry skin. The second more spa-esque method is to mix up a few ingredients from the kitchen to make a home-made exfoliator. You only need three ingredients, which you will

definitely be able to find in the cupboard!

- 2 tbsps carrier oil – coconut oil, olive oil, sunflower oil, jojoba oil – anything that suits your tastes or that is available in the pantry!

- 2 tbsps exfoliant – coarse sea salt, granulated or caster sugar, coffee grounds – again, anything mildly abrasive (and edible!) that you can find.

- 1 tsp lemon juice – also interchangeable for fresh orange or lime juice – any citrus will do the trick as it contains rejuvenating antioxidants.

A personal favourite is coconut oil with granulated sugar and lemon juice. If you have more of a savoury palate, jojoba oil, sea salt mixed with coffee grounds and lime juice is a good option.

Mix all the ingredients together in a small dish. You don't want the mixture runny so add more solid ingredients if the mixture isn't thick enough. If you use a liquid oil as opposed to a solid oil (like coconut) you will need slightly more exfoliant, so the product holds together better. Apply after showering when your skin is soft

OUT OF THE MOUTHS OF BABES

Golden guns, worm sandwiches and unicorn-themed White Nancy

When my son was 3½ I kept a diary of the amusing things he said and did – it makes for entertaining reading (not least being reminded of the time he shouted 'Look!' in a café and lifted my top up to a poor unsuspecting gentleman). Even I still get reminded of the time I was three years old and I proudly announced to a gas showroom that I had rolled and stuffed a bus ticket up my nose. It was a thorough job – surgical pliers required.

In the spirit of clinging onto positive things and surviving the hurdle we all face, I hoped that an article on kid's comments would bring a little humour to this edition of Bollington Live and I have got the little people of Bollington Pre-school to help me with this. Enjoy!

What is the most fun you have ever had at pre-school?

Dylan - Playing with the train track... no... actually, playing with the Octonauts.

Who would win out of a fight between a dinosaur and your Daddy? Why?

Dylan - Dinosaur because it's big... but Daddy could push its legs and fall it over, then Daddy could win.

Senna - Dinosaur, because he has a big mouth to eat him. Or, Daddy could win him just by punching him.

If you are a superhero, what powers would you have and what would your name be?

Dylan - Webs because I'm Spiderman.

Henry - I don't want to be a Superhero, just Henry.

Senna - I will have lasers, a golden

EMEDIES

from the hot water. Apply in circular motions to the lips then wash off with warm water. Make sure to apply a lip balm afterwards to keep the lips soft.

Hair

Keeping hair shiny and frizz-free is especially hard in the winter months as dry, cold air makes hair brittle. To give your hair some help, you can make some simple hair



masks to either leave in overnight for a morning wash or apply a few hours before you wash your hair in the evening. One of my favourites is pure and simple coconut oil. Depending on your hair length, melt a spoonful or so of the oil in your palms and apply to hair from the roots down. Make sure all of your hair is covered and comb through, fully incorporating the oil into every strand. Leave in overnight wrapped in a turban to

protect bedding or wash out after an hour or so. You will need to shampoo twice to fully remove all the coconut oil otherwise your hair may still feel oily after a wash.

If you're after a more sophisticated mask, you can add any of the following ingredients to coconut (or any other) oil for extra hair-enriching properties:

- lemon juice • honey • mashed avocado • overripe mashed bananas

Apply once a week to keep hair looking luscious.

Another trick to keep hair looking shiny is an apple cider vinegar rinse after shampooing. Apple cider vinegar helps

balance the natural pH of our scalp and hair as it contains acetic acid. By lowering the pH of our hair, the cuticles on the surface of each strand lie flatter, which creates natural shine and also helps the hair become smoother, causing fewer tangles.

Apple Cider Vinegar Rinse:

- 1 or 2 tbsps apple cider vinegar
- 2 cups water

You must use heavily diluted



apple cider vinegar otherwise you can cause damage to your scalp and hair. If the mixture smells too vinegary, add a few drops of your favourite essential oil or alternatively, instead of using plain water to dilute the vinegar, use a herbal tea, for example, camomile or red berry.

To apply, shampoo the hair as normal then pour the mixture over your hair in the shower and leave to sit for a few minutes. Rinse out thoroughly and if necessary, condition the hair for extra smoothness.

Hopefully these tips will help keep your skin and hair looking great over the winter months.

Before trying anything new on your skin or hair it's always wise to do a patch test to check you are not allergic to any of the ingredients. Use all skin and hair products with care.

Miriam Beck

gun and some flying on my back wings.

What would be the coolest picture to paint on White Nancy?

Dylan - A hot wheels car. There would be a track around and the car would go really fast around the top then fall off!

Henry - I'd paint it red! Just red!

Senna - Pink! And purple and green and pink. Pictures then of unicorns.

Some people put peanut butter, bacon and bananas together in a sandwich - what is the craziest sandwich you can think of?

Dylan - Worms and bugs with lettuce and cheese and ham.

Senna - I'd put bananas and eggs and burgers and cupcakes. It would be big; would you like it?

What's the funniest thing you've ever seen?

Henry - My Daddy!

Senna - Daddy pulling silly faces

What's the silliest thing someone in your family has ever done?

Dylan - When we went to Alton Towers crazy golf and Christopher lost the red ball. We couldn't find it anywhere - it went in a bush

Senna - Bruno when he falls over is funny

What do you think Peppa Pig will be when she grows up?

Dylan - A Mummy Pig... or a Daddy Pig. She is a girl though!

Senna - She might be a cat, or a witch or a person... Or a Mummy!

A big thank you to Dylan age 3, Senna age 4 and Henry age 3 for bringing such a lovely sparkle to this edition - we think your answers are brilliant!

*By Hannah Atkin
(with help from Emerson Hall)*

bollingtonprintshop

YOU BE THE BRAINS - WE WILL BE THE CREATIVE

CANVAS PRINTS • POSTCARDS

T-SHIRTS • GREETING CARDS

PAINTINGS & PRINTS • CUPS

KEYRINGS • COASTERS

PAINTED STONES,

BOOKMARKS & SIGNS

HANDMADE BAUBLES

BUSINESS, PERSONAL

& WEDDING PRINTING

ALL DESIGN WORK

GICLEE PRINTING • LAMINATING

PHOTOCOPYING • SCANNING

01625 574828

f Bollington Printshop @bollington.printshop

www.bollingtonprintshop.co.uk

GREAT FOOD & REAL ALES

THE VALE INN



**THE BOLLINGTON
BREWING CO.**

**ADLINGTON RD,
BOLLINGTON.
SK10 5JT.**

01625 575 147

tyrZ FOR TYRES

LOCAL, PROFESSIONAL & HONEST

CAN'T GET TO THE GARAGE? NO PROBLEM.

WE ALSO OFFER A MOBILE TYRE FITTING

SERVICE AT YOUR HOME OR PLACE OF WORK.

**BUDGET TYRES
FROM**

£40

**PUNCTURE
REPAIRS**

£20

LEADING THE WAY

**FREE
TYRE LIFE
GUARANTEE**



DAVANTI TYRES

**LOW NOISE
SMALL PASSENGER
CAR TYRE**



DX240

**HIGH PERFORMANCE
PASSENGER
CAR TYRE**



DX390

**ULTRA HIGH
PERFORMANCE
TYRE**



DX640

**DURABLE &
FUEL EFFICIENT
SUV TYRE**



DX740

**HEAVY LOAD
COMMERCIAL
VAN TYRE**



DX440

© **01625 560 560 • tyrz.com**

Foot health and wellbeing

Podiatry/Chiropody Treatment

Relaxing foot bath

Toe nails cut and problem nails dealt with

Corn, Callus and hard skin removed

Rough skin treated

Cracked heels smoothed

Finally a relaxing foot massage and after care advice

- Biomechanical Assessments • Nail Surgery

Helen Kay BSc (Hons) Podiatry

M.Ch.S, Registered with the Health & Care Professions Council

For an appointment call today

Telephone: 0777 216 6751

Home visit available

Or visit us at:

Park Lane Chiropody Practice
Above Henrietta Cards
35a Park Lane
Poynton
Cheshire SK12 1RD

BOLLINGTON BY - EMMA BAMBROOK

Emma is originally from Tamworth in Staffordshire and moved to Bollington in October 2014. She is married to Peter, an airline pilot. They have a daughter together and Emma has two grown-up stepdaughters. She is the Mayor's Secretary and Town Hall Assistant.

What brought you to Bollington?

We had to relocate because Peter's job had been based at East Midlands Airport and was moving to Manchester. We had no connections to Manchester, so planned to rent first and explore the area. We rented an apartment in Clarence Mill, where Peter lived while we were still in the East Midlands. He liked the area, so we planned to move there. In the meantime, Peter had seen a job advertised that he thought would suit me, a secretary for the Town Mayor and Town Hall. We moved to Bollington one day and I had an interview for the job the next. We have now bought a house in Bollington and have enjoyed being part of a welcoming community.

So, what does your job entail?

Of course, currently things operate rather differently, but, pre-Covid I was part of the team at the Town Hall who would direct people to the

right person, explain where they may need to go and help generally with public enquiries. The other aspect of my job is looking after the Mayor's diary and organising civic events. Things are not happening quite the same at the moment, but the Town Council have been continuing things as usual with online Council Meetings and committee meetings. The Mayor-making was online and meetings are accessible to the public.

The community support is still available even though everyone is working from home.

What do you like about your job?

We moved here without knowing anyone and I have met so many people working at the Town Hall and I feel very fortunate to be living and working in this friendly town.

What do you particularly like about Bollington?

As a family we like to walk and explore the countryside. The surrounding hills are wonderful for walking. Bollington is an unusual place, a small town with a village feel about it.

How green are you?

Well, married to an airline pilot and driving a large car, I am not sure I can claim to be the greenest



person in Bollington, but as a family we recycle what we can and I walk whenever I can.

What is your favourite place in Bollington?

I love the walk up from Styperson Pool, and like to stand on Long Lane and look at the view. The view from the top of White Nancy is also wonderful.

How do you relax?

I love knitting to relax but also like walking. As a family we are also involved in our daughter's sailing.

Sandy Milsom



Portrait
Pools.com

Design • Build • Behold



Showroom: 2 Store Street, Bollington, Cheshire SK10 5PN Tel: 01625 466200

Email: info@portraitpools.com Web: www.portraitpools.com

Multiple SPATA award winners including National Pool Contractor of the Year 2011, 2013 & 2014 SPATA Approved Installer Member



ADELPHI MILL CONNECTIONS

In 1974, as newly married couple, we searched for an affordable cottage to buy. At that time the mills in Bollington were still working and house prices were cheaper than Macclesfield. We found a lovely two-up-two-down on Rose Bank, Grimshaw Lane. It was perfect, having been nicely modernised by a local joiner, Trevor Bloor, and with a little garden at the back. We paid the princely price of £6,500! Hard to believe today when one considers the grand prices cottages in Bollington fetch!

It sat beneath the Adelphi Mill, its great machinery sounding a deep hum 24/7. At first, as two southerners, we found the sound strange, but soon it became reassuring as we quickly became acquainted with this old mill town set in the most beautiful countryside.

I think we were of some interest to the neighbours as we settled in. One night, cooking on our wedding-present portable barbecue, we looked up to see we had an audience! They gazed out of windows and doorways as they had never seen the like before! Cooking outside when a perfectly good cooker was to be had in our kitchen? Barbecue was a new word for them! The days were happy and the hum of the old giant became our friend.

Then one day the hum stopped.

A gloomy atmosphere brooded over our valley. Men with little to do gathered on street corners, or in the local pubs, of which there were many (I think 26). We felt Bollington became a sad place as the old mill gradually declined.

During the late 70s to 80s there were a few businesses that encamped in the old building. I remember a pleating company who made posh skirts. You could turn up and buy a good quality English wool skirt very cheaply. I wore mine with great pride, as did my friends and relatives!

Slowly more businesses moved in. A gym! A new idea and venture. Locals couldn't see that catching on! In buildings around the mill one could purchase various strange things. Nuts, whole foods, crystallised ginger! Fish, even lobster! Visiting these outbuildings was a favourite trip for my very young children who watched the live, blue monsters in a huge tank, marvelling at their metamorphosis to a beautiful pink as they were boiled alive!

Time passed, and as more businesses moved into the mill, various renovations and improvements were made to its interior. The solid, strong exterior remained the same and it still held its silence as the secret inner changes hidden to the outside world evolved.

My life also changed. We moved

twice within the town we had grown to love. We brought up our two girls, who attended a local school, and we became involved with the day-to-day life of Bollington. Enjoying the local leisure centre, the idea of Maurice Coope, who was one of the doctors in practice, together with Dr John and his wife Dr Jean and their son Dr Gerald, who also joined them in practice. Dr John's brainchild was our Arts Centre, their ideas being truly forward-thinking as they saw a need for Bollingtonians to enjoy leisure time, thus aiding good physical and mental health. Both centres for mind, body and creativity thrive today. Bollington is indeed a special place.

After having time out to bring up my girls, I returned to my teaching career. I loved my job and considered it a privilege to teach many children in the locality. I wasn't sorry when my dad told me I had to get a proper job when I so wanted to be a professional artist, but I promised myself that I would paint again when I retired.

I joined Bollington Art Group, having lost all confidence in my artistic abilities. At this wonderful teaching group I learned so much and quickly my confidence returned.

I remember selling my first picture in the art group annual exhibition! The thrill was incredible! Thankfully there have been many exhibitions

We are delighted to support Jennie Gaywood with three paintings of wonderful local landmarks which now hang in the Adelphi Boardroom

Adelphi

Healthcare solutions

ADELPHI MILL, BOLLINGTON

Our business is strong and growing, and our staff continue to successfully work from home and the office during the Pandemic

Proud to feature as a leading healthcare company
in the UK 2020 Parliamentary Review



and sales since then. I regularly exhibit at Bollington Health and Leisure and during the Bollington Festival Art Trail. I owe Bollington Art Group so much and now I find myself being Chairperson! The aim being to encourage others with their creativity. There are many gifted artists in our area and it's great to enjoy their work too. It is humbling that someone likes my work so much that they are prepared to pay well-earned money for it and hopefully enjoy the picture on their wall.

Journey forward to 2019 when I took part in the East Cheshire Hospice Art Fair. A wonderful event, raising many thousands of pounds for our Hospice, and it was a real honour to take part. I entered a picture of Kerridge Ridge and our loved local monument which was featured in the catalogue. The Adelphi Group were looking for pictures to adorn their amazing boardroom, and I was approached. The picture in question was far too small for the vast walls of the room so I was asked to paint another similar picture but much bigger! Two further pictures were requested – one of Shutlingsloe and another of Teggs Nose from

the Langley side.

On visiting the mill after many years I was amazed and encouraged to see the many thriving businesses now within its walls and the wonderful sympathetic restoration on the top floors where many folk work for the Adelphi Group. As you can imagine the views over our wonderful old mill town are amazing and must delight the eyes of the fortunate folk who work there. What a change from the noisy and dusty days of the past!

Embarking on commissions is always somewhat daunting but I felt happy to rise to the challenge as I felt a strong connection to the mill and its past.

The remains of my story you can see for yourself! My three pictures now hang in the beautiful boardroom on the top floor of the Adelphi Mill and I feel incredibly proud and honoured to have my work there. Little did I think when we lived in our first home beneath the humming mill, that 46 years on, my art would adorn its walls! This mill and I have history, Now we have a future!

Jennie Gaywood

BOLLY LIVE! DELIVERIES

My wife Andrea and I deliver Bollington Live! to around 140 houses in Bollington – she on one side of the road – I on the other. There is competition to complete the round first, although I'm not sure that she is aware of that.

It's nice to meet our neighbours on the round, the answer to the question, 'Would you like Bollington Live! in your hand, or through the letterbox?' invariably being 'In my hand, please. I'll start reading it now.' We carry a few more copies than strictly necessary, as quite often we are asked for an extra one – 'for my sister in Disley – she likes to know what's happening in Bollington'.

By way of diversion I sometimes try to insert the magazine into the letterbox so that it lands front page up on the mat. Folding is key.

The variety of letterbox design is remarkable: some vertical, some horizontal, some cunningly designed as artwork, some non-existent, necessitating a hunt for the alternative, some high, and some (too many) hardly above ground level. The heart sinks approaching one of these. Crouching down is bad enough for the aged knees but getting up! Some of these devices are quite vicious, too (think the till in Open all Hours, with Ronnie Barker). Andrea removes her rings for fear of them being gobbled up, and we rarely finish without a grazed knuckle, so if you are having a new front door, spare a thought for those who have to push things through the letterbox!

Andy Pankhurst

Take your business advertising
further afield
and let everyone know
who you are, where you are
and that you are
OPEN FOR BUSINESS!



with **Local People**
MACCLESFIELD

- Unrivalled large distribution from Chelford to Bosley, Gawsworth to Bollington - great value for money!
- Online copy available to read from our website and NEW exclusive on-line directory, free for our own advertisers
- Run *by* local people *for* local people
- Affordable, effective and popular!

www.localpeoplemacclesfield.com

01625 265551



DAVID RUTLEY
MEMBER OF PARLIAMENT FOR MACCLESFIELD

**David is keen to
assist with any
issues or concerns
you may have.**

It's easy to get in touch...

☎ **0207 219 7106**

@ **david.rutley.mp@
parliament.uk**

🌐 **davidrutley.org.uk**

f **fb.com/david.rutley.1**

🐦 **@DavidRutley**



Promoted by David Rutley MP, House of Commons, London SW1A 0AA.

**24 HOUR
SERVICE**

BOLLINGTON
Veterinary
CENTRE

1 Ashbrook Road, Bollington, Cheshire SK10 5LF

Tel: 01625 572999

www.bollingtonvets.co.uk

Surgery Open

Monday to Friday: 8am - 7pm
Saturday: 8.30am - 12.30pm

Consultations
by appointment

Also at:

TYTHERINGTON
Veterinary
CENTRE

Brocklehurst Way
Tytherington, SK10 2HB
Tel: 01625 669666

RED OAKS FARM
BED & BREAKFAST



**** Silver Award B&B

www.redoaksfarmbollington.co.uk

To book accommodation

Phone 01625 574280 or 07870 814776

brendahelenbuxton@btinternet.com

JEREMY UNSWORTH

Funeral Directors of Distinction Est. 1987

Valerie House, 39 Palmerston Street, Bollington, Cheshire SK10 5PX

Email: unsworthsfuneral@aol.co.uk

Website: www.jeremyunsworthsfunerals.co.uk

*Traditional & Alternative
Funerals Undertaken*

Chapels of Rest

24hr Service

*Horse Drawn Hearse
(by prior arrangement)*

Also at:

67 Church Road
New Mills,
High Peak, SK22 4NU
Tel: 01663 742772

The Courtyard,
Market Street, Whaley Bridge
High Peak, SK23 7LP
Tel: 01663 732064

Independent Family Funeral Directors

Tel: 01625 560078

*Principle sponsor of
Bollington Brass Band.*

Golden Charter
Funeral Plans



SAD ABOUT SADPD?

Are we sad about the latest SADPD? No but

The latest version of Cheshire East's Sites Allocation and Development Policies Document (SADPD) is of vital importance to Bollington as it sets out the expectations for building houses in Bollington up to 2030. The document was intended to also set out where houses could be built.

When first released for Committee discussion in September 2020, published it was greeted with cries of delight by people like local councillors who follow the twists and turns of Cheshire East Strategic Planning closely. Why?

Because this version stated that no Green Belt land will be used for housing before 2030. Previous versions had proposed taking land out of the Green Belt, including three sites in Bollington, and building houses on it.

Bollington residents had reacted very strongly to those proposals and sent in lots of reasons why Green Belt land should not be used. In fact Cheshire East had to admit that Bollington residents sent in more objections than the rest of Cheshire East put together!! That was partly because Bollington Town Council and Council members of Bollington Civic Society played a very active part in the campaign.

They set out the facts about house building in Bollington since 2010 when the Plan was supposed to start and pointed out that the CEC proposals were in legal error as there were no exceptional circumstances to justify release of the Green Belt. They cited the Neighbourhood Plan adopted in

full in 2018 which made it clear that only brownfield sites should be used for housing. No Green Belt should be used.

Bollington was supposed to provide Cheshire East had allocated 390 houses to Bollington in the 20 year 20-year period, which was well over a 10% increase, far beyond the 'modest growth for local needs' that the Cheshire East Plan specified. Nevertheless 336 units of accommodation had already been built and there were more than 10 years of the Plan still to run! Demanding the use of Green Belt land seemed and was preposterous.

One important change took place between version 2 of the SADPD and the version we have now; in 2019 there was an election and the face of the Borough Council, the major planning authority, changed. May 2019 brought a combination of Labour councillors and Independents to power replacing the previous long-standing Conservative majority. Faced with extensive objections in the formal consultation, the Strategic Planning officers were asked to think again.

So are we satisfied and what happens now?

While we are very pleased that no Green Belt land will be taken before 2030 we are deeply concerned that two pieces of Green Belt Land have been chosen to be 'safeguarded', namely BOL1 off Henshall Road and BOL2 at the end of Greenfield Road. As is often the case with Planning Speak the words mean the exact opposite of what you think they mean.

BOL1, also Land of Henshall road known to us as Hall Hill, being 'safeguarded' means that it is the first bit of Green Belt land that might be taken for housing in 2030. It is NOT 'safeguarded' for the community; it is 'safeguarded' for the owners who want to sell it to developers for a huge profit who will then build 40 houses on it to make a further huge profit. Bollington people would lose a much-loved open space in the heart of their community which is central to the newly proposed extended Conservation Area.

The proposed Conservation Area developed through the Neighbourhood Plan would genuinely safeguard the historic and architectural legacy of the Greg family in Bollington. The family that provided improved housing; provided a local school, provided a library, provided areas of land for cultivation of vegetables, fruit and flowers for their mill workers and donated our cherished Recreation Ground and our decorated water fountain on Flash Lane to the people of Bollington.

What can we do?

We can tell Cheshire East in the forthcoming consultation what we think of their plan to designate our one large open space for yet more houses. We have a 6-week period in late October and November when we can submit our views on their latest plans for Bollington. We can say yes to 'no Green Belt use' and no to designating Hall Hill for use after 2030.

Ken Edwards
with additions by **Mike Burdekin**

BOLLINGTON HEALTH AND LEISURE

Bollington Health and Leisure closed its doors in line with government guidelines on 20 March 2020 and reopened on 25 July 2020. The centre employs approximately 90 members of staff, most of whom were placed on the furlough scheme. Some staff were brought off this scheme two weeks before the reopening date and worked incredibly hard to put everything in place to ensure a safe and successful reopening.

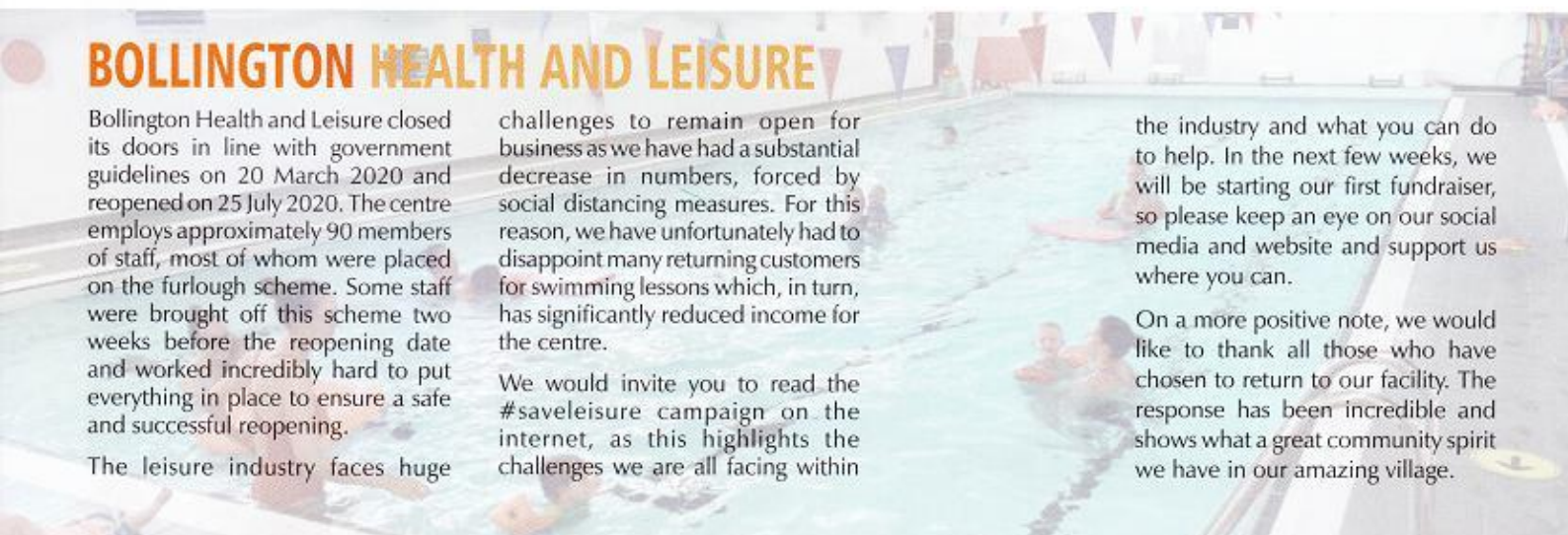
The leisure industry faces huge

challenges to remain open for business as we have had a substantial decrease in numbers, forced by social distancing measures. For this reason, we have unfortunately had to disappoint many returning customers for swimming lessons which, in turn, has significantly reduced income for the centre.

We would invite you to read the #saveleisure campaign on the internet, as this highlights the challenges we are all facing within

the industry and what you can do to help. In the next few weeks, we will be starting our first fundraiser, so please keep an eye on our social media and website and support us where you can.

On a more positive note, we would like to thank all those who have chosen to return to our facility. The response has been incredible and shows what a great community spirit we have in our amazing village.



WE ARE ST GREGORY'S

Deep in the heart of Bollington,
On the edge of the Peak District
plains,
There lies a school at the centre
of the town
And St Gregory's is its name

We opened up back in
September
All excited and keen to return
And quickly adapted to all the
new rules
To make sure we could
get back and learn

At drop-offs we say "Bye" to
parents
And quickly skip off to our class
To catch up with friends for some
chatter
Before we get on with our tasks

The teachers and adults are
caring
And made sure we had a great
start

They make all our learning
amazing
And love us with all
of their hearts

And playtimes are super-fantastic
With activities for one and for all
We've got football and tennis
and climbing and more
And children are having a ball!

And 'Rocky' is everyone's
favourite
And we love to take him for his
walks
Around the school and on the
big field
As we chitter and chatter and talk

The time goes so quick at St
Gregory's
Where we sing and we dance
and we play

The teachers are great, the
classroom are bright
And we thrive and
excel every day

At pick-up our wonderful parents

Collect us with hugs and a treat
We say "Bye" to our teachers and
head for our homes
To relax and put up our feet!

It's precious our time at St
Gregory's
A small school with such a big
heart
Preparing us well for the big
world around us
It's brilliant, a gift – the
best place to start

Deep in the heart of Bollington
A town of such beauty and grace
There lies this amazing St
Gregory's school
All happy and safe and
in the right place!

BOLLINGTON VETERINARY CENTRE

We followed all the necessary
and strict advice from the UK
government and our very own
governing bodies; BVA and RCVS.

The welfare of our patients and
the safety of our team and clients,
was and remains paramount to
Bollington Vet Centre.

Bollington Vet Centre staff were
divided between two teams; Team
A & B. Each team consisted of 2
Vets, 2 Nurses and a receptionist.
Some staff were initially furloughed,
but later brought back to work
when demand and the need
arose. All communication between
the two teams regarding patient
handovers were done via the
telephone and/or video calls.
Biosecurity measures were always
maintained and followed ensuring
the safety of all staff whilst in our
building.

Only patients deemed urgent or an
emergency were seen.

We operated a closed door policy.
No clients were invited inside the
building. Clients were asked to wait
in their cars. A vet or nurse would go
outside to take a full case history,
taking only the patient inside for
examination. The diagnoses and
treatment plan would be relayed
back to the owner directly by
the vet calling them whilst they

waited inside their vehicles. Once
the owner was informed and
had decided what they wanted,
the animal would be treated
accordingly and handed back to the
owner in our large onsite carpark.

Telephone consults were offered
to any clients that were shielding
or protecting their own vulnerable
family members. Often suggesting
the owner emailed photos/videos
before the consult, thus providing
further evidence to support the vet
to make his/her diagnosis.

Full PPE was sourced and made
available to our staff, and several
practice protocols were put in place
and followed. Protective screens
were erected and hazard warning
tape was placed to support social
distancing and an added level of
protection for our reception team.

As a profession we are already
trained and equipped to deal
with many infectious diseases,
so we already had an advantage
in how we needed to go about
safeguarding our staff and clients.

**What would make a difference
to you now?**

Continued client support. Our
practice is very grateful to all our
clients as we are still transitioning to
providing as full a range of services



as possible, whilst working safely.
Unfortunately we are not back
to 'normal' ways of working. We
do still have restrictions and the
need to maintain social distancing
measures are still in place. The
increased restrictions, mean we
are working slightly less efficiently
resulting in more difficulty in
getting a routine appointment
and occasionally increased waiting
times. As ever we will always
maintain capacity to allow us to
treat and manage emergencies.



VISUAL-IMPAIRED SOCIAL DISTANCING

Social distancing is a difficult thing for everyone to get used to, but for those with visual impairments this difficulty is amplified. This article touches on some of the key challenges that people with sight loss experience during the current social distancing requirements. Please be aware that someone around you might have a visual impairment, and don't make assumptions on what people can and cannot see.

Social distancing in shops and public spaces

Many checkout and ordering systems now require customers to stand behind an indicated line on the floor. Although this is a very useful tool for sighted people, those who have sight loss are unable to see these indicators and in many cases are completely unaware of their presence. As a result, people with visual impairments may step over the line or get closer than advised, leading to misunderstandings with staff members and other members of the public.



Queuing to enter shops

The capacity restrictions on shops and venues has resulted in queuing outside these premises before entering. Guide dogs are trained to take their owners directly to the entrance of a shop and so have been continuing to do so during these unprecedented times. There have been a number of instances where people with visual impairments have entered a shop without knowing that there has been a queuing system due to following the lead of their guide dog.

One-way systems

Similar to that of floor markings, one-way systems have been introduced in most shops and

public places. Although these are a useful tool for sighted people, those with visual impairments are unable to see the directions being displayed, or if there are no-entry areas. The marking of the direction paths can also be a hazard, with people walking into heavy signage.

This is a difficult time for everyone, and it will take a lot for us all to get used to it. As you're out shopping, keep in mind that people around you might have a visual impairment, and lend a 'socially distanced' hand where you can.

East Cheshire Eye Society is a charity that supports people affected by sight loss in the local community. The charity's fundraising events have unfortunately been cancelled due to COVID-19, so if you would like to offer your support, please donate via the East Cheshire Eye Society Local Giving page, <https://localgiving.org/charity/eyesociety/>.

East Cheshire Eye Society

BOATS 'N' BIKES

Unfortunately, our business was closed until early June, when we were able to open for some household groups with extra cleaning schedules, provision of hand sanitiser, etc. During lockdown we took the opportunity to make improvements to our dayboats and to our reception and shop.

Thankfully we've had a busy summer, with lots of families finding that our dayboats are an ideal way for all members of the family, from toddlers all the way through to grandparents, to spend quality time together in a safe environment. It's a lot of fun to discover the beautiful Macclesfield Canal with all its great wildlife, stunning views and the chance to steer your own boat, sharing a picnic or stopping for

lunch at a canalside tavern.

If possible, we'd love to welcome more families and small groups of up to six people to enjoy the autumn colours on the waterways, maybe bringing some soup to share – if the weather turns a bit cool, wrap up in coats and hats and it's still a fabulous way to spend a day.

In addition, we also now have an overnight hire-boat that's available for long weekends or midweek breaks for up to six people, ideal for a mini-staycation. Our hire-boat has a well-equipped galley, two bathrooms and three bedrooms, complete with central heating.

We've been lucky enough to have some fabulous reviews on Tripadvisor – feel free to check these out, and/or give us a follow

on Facebook or Instagram.

Bollington Boats and Bikes Ltd
Bollington Wharf, Grimshaw Lane,
Bollington SK10 5JB

Tel 01625 575811

Bollington-wharf.com



ADAPTION & DIGITAL MARKETING FOR BUSINESS

Unless you're selling toilet rolls, PPE or hand sanitiser, the chances are that your sales have dropped!

In this article, Becky Reardon, Managing Director of Embrace Marketing – a local branding, digital marketing and website development agency – shares her views on how your business can keep its brand awareness and enquiries going in a challenging environment.

Map out your digital customer journey

At the moment, with less focus on more traditional marketing methods, standing out amongst your right target audience digitally is vital. Think about your customers and try to place yourself in their shoes. Where will they be looking to find your brand? Searching via Google is often key, so your website search engine optimisation (SEO) will be really important to get right so your website ranks highly for the right keywords.

Customers will also likely want to see what you're saying on social media.

Have you shared the information that they might want to know to reassure them of your products/services during the pandemic? Do you have interesting and varied content which is engaging well and creating a great brand impression and driving customers to enquire?

Your website is your 24-7 shop window. Make sure it's up to date and is doing your brand justice. We create an impression in our minds incredibly quickly about a website – usually within just a few seconds. Make sure your website is creating the best impression and it's encouraging customers to enquire.

Share valuable content

You'll likely be an expert in your field and that's why you're a leader in your business. What do you know that your customers don't know that they'd be interested in? If you're a restaurant owner, perhaps you could share some recipe tips. It won't stop customers eating out and/or ordering takeaway from you (depending on the latest government guidelines), but it will

create a personal relationship and customer loyalty.

Adapt to remain competitive

The buying process is really challenging at the moment. There's still lots of uncertainty in the air. But that means one thing – you need to increase your enquiries and you might need to adapt your business and offering to do that. Do some research with clients. Look at the expected changes in the market and what's to come and pilot some new ideas. Now is a great time to innovate and see how your business can generate new approaches and become more agile.

At Embrace Marketing we're offering a free brand and marketing audit to all local businesses, called Activate. Our goal is to help local businesses who need support to get their sales, brand and marketing back on track during the pandemic. Email hello@weareembrace.com for more information.

Becky Reardon

HOLMES NADEN

As estate agents in Bollington for 28 years, we are used to a fluctuating market, and Holmes Naden has always weathered the storm, but along with everyone else Covid-19 created an unprecedented challenge for us.

From the end of March until 1 June we closed our offices in Bollington and Prestbury, putting staff on furlough. However, vendors and purchasers still needed our support to carry through their sales and lettings, so managers in both departments worked from their homes to ensure everything progressed satisfactorily. Thankfully, along with the support of solicitors working in a similar way, we were

able to complete sales and find rental properties for clients, always making allowances for the social distancing regulations.

Needless to say, as soon as it was viable and permitted at the beginning of June our offices opened their doors, and we now have all staff back behind their desks and we are extremely busy. With Stamp Duty being waived until the end of March 2021, it has never been a better time for anyone who has been thinking of selling or buying to do so.

JJJ HEATHCOTE

We remained open during the lockdown, serving the people of Bollington by adapting as best we could. We offered both a delivery service direct to people's homes and also a pick-up service.



Our customers were very respectful of the 'one person in the shop' rule and we have continued to provide our usual high standards of service to our customers.

We would like to thank all our customers, old and new, for supporting the shop during these strange times.

BOLLINGTON BRASS BAND

Bollington Brass Band was first formed in the nineteenth century, but the present band owes its origin to a group of enthusiasts who met together in 1972 following an initiative by Dr John Coope. When Brian Taylor was appointed as Musical Director in 1985 the band began to make considerable progress, gaining promotion from the Fourth to the Second Section and qualifying twice for the National Finals.

On Saturday 14 March they gave a Charity Concert at the Arts Centre to an appreciative audience; little did any of the players know that it would be their last live performance for many months!

So, the band haven't been able to rehearse together or give any concerts since then as advice from Brass Bands England is that any rehearsals should see members spaced at least 3 metres apart, which makes them completely impractical.



Incidentally, brass bands (of which there are almost 500 dotted around the UK) are classified into five divisions or sections for competition purposes (Championship, First, Second, Third and Fourth), rather like football clubs, with points gained through successful competition results – and, of course, promotion and relegation! The Championship Section boasts the likes of Grimethorpe, Black Dyke, Cory, Foden's and Brighouse & Rastrick bands; Bollington are currently in the First Section.

After Brian's tragic death in 1994 the baton passed first to Bob Wyatt and then to Tim Power before Peter Christian was appointed Musical Director in August 2001.

Under Peter the band has achieved unprecedented success. They've twice been crowned North West Champions (Second Section) at the annual Regional Championships in Blackpool and have qualified for the National Championships of Great Britain an amazing four times – twice being runners-up by a single point!

However, this year's performance at the Regional Championships was the penultimate outing for the band as lockdown, precipitated by the Covid-19 epidemic, was just a matter of days away.

They've not been completely idle, however, having recorded a number of amazing 'virtual' numbers which those of you with internet access may have been following on the band's Facebook page.

They began with a performance of The Great Escape in April which, like all the rest, was recorded individually in players' own homes; this was followed by a version of The Proclaimers' I'm Gonna Be (500 Miles) and by Matt Lucas's Baked Potato in May.



Another virtual track was recorded in June for Bollington Town Council's annual Civic Service, while July saw the band online again helping to celebrate Sylvia Roberts's 80th birthday.

Perhaps the highlight of all the virtual

CONTACTS

Secretary:
Paul Berry,
bollington
brassband
@gmail.com

Chair:
Bev Needham,
01625 613851

Patrons:
Roger Johnson
01625 613851

The band on
White Nancy

Parade in Kerridge

recordings so far was the band's tribute for the Kerridge War Memorial Service on 12 July, complete with a particularly moving performance by Robbie Richardson, our Principal Solo Cornet, at the actual memorial, and a special guest appearance!

But while these recordings have given the band a certain focus over the last few months, they've not really filled the gap left by the cancellation of all live engagements, including the Whit Marches and the Wincle and Bollington Beer Festivals, to name but a few. Unfortunately, this scenario looks set to continue for some time yet, and it is with great regret that the band has had to cancel both their annual Patrons' Concert and Christmas Concert this year.



All is not gloom, though: at the end of September they will be entering an online Entertainment Contest organised by the Cory Band. Their programme will be: Men of Harlech (march), Georgia on my Mind (cornet solo featuring Robbie Richardson) and I'm Gonna Be (500 Miles).

They'll also be making a recording for Bollington's Remembrance Day Service in November which will be posted on their Facebook page.

Similarly, they are hoping to produce a 'musical' Advent Calendar, with small groups/duos/trios performing a different Christmas song for each day of Advent.

Finally, while a huge question mark hangs over most of the Christmas engagements, including 'Carols Round the Tree' on Christmas Eve, there is a possibility that small groups of players may be able to go out carolling round the streets of Bollington during the lead-up to Christmas; fingers crossed!

Roger Johnson

Full senior band
photo courtesy of
David Naylor

BIT UPDATE

If you've walked past Turner's Lodge or Water Street School or through Tinkers Clough Wood, you may have noticed the deep red logo on the signage referring to Bollington Initiative Trust (BIT) and you may have wondered what this was. Well let us tell you little bit about BIT and what we do.

BIT is a registered charity which helps to preserve Bollington's unique environment and heritage for the benefit of our local community. (We say 'our' because most of the Trustees live in Bollington too!). The Trust works hard acquiring and managing land and buildings which may otherwise be lost or developed for private-sector housing and saving places for local people to use and enjoy. We have been in existence for around 15 years and, whilst we have worked on many plans and concepts, there are three projects which you may be aware of in your local vicinity.



Turner's Lodge

Originally a disused toilet block on the corner of Ingersley Road and Shrigley Road, the building stood empty for many years. BIT realised its potential and value locally and took over its management from the local council. We raised funds (together with partners) to restore and convert the building to a renewable energy-efficient office.

Turner's Lodge is now occupied by Simplicity Granite, a local business, who moved into the building in 2015. Lee and the team are excellent tenants and we are delighted to not only have restored the building but also to have helped a thriving local



business to remain in Bollington. In fact, this project has been recognised by Historic England as a great example of how buildings can be saved and repurposed, and also add value to the local community.

Tinkers Clough Wood

This delightful area of mixed woodland is in community hands through the efforts of BIT. A path was built through the Clough many years ago but thereafter, not maintained. BIT restored the Clough and returned it to public use. Funds were raised to produce a management plan, extract timber, improve the drainage, create more light to the ground flora, reconstruct a footpath and bridge and manage the boundary walls. It is a hidden treasure and one which has been used by a growing number of local people during the COVID lockdown.

We are very grateful to the Kerridge Ridge and Ingersley Vale (KRIV) volunteers, who regularly visit to do much of the maintenance work necessary to preserve the natural habitat and maintain the paths.

The Bollington Neighbourhood Plan produced a map of local wildlife sites and maps of habitat distinctiveness. Five areas were identified as local wildlife sites of high value, one of which is Tinkers Clough. Community feedback gathered for this Plan identified Tinkers Clough as an important open space for Bollington. BIT is proud to manage this site and provide access for all.

The Water Street Centre

Our largest property is the Water Street Centre. Following a Community Asset Transfer from the local council we now manage it on behalf of the community. Dating back to Victorian times, this former secondary school is in the centre of Bollington and the conservation area. Had BIT not taken the property into community hands, it is most likely that it would have been sold and turned into flats, thus losing a vital community space.

The centre now hosts the thriving, charitable Bollington Pre-School on the ground floor and very successful troops of girl guides and brownies use the first floor. However, we have more plans to develop the Centre to make it more inclusive for all.

Our vision is to create an accessible and vibrant family hub for Bollington at the Water Street Centre. However,



the building requires refurbishment and reconfiguration to create a quality, inclusive and fully accessible community facility. Significant funds will need to be raised to address many years of under-investment in the maintenance of the building by its former owners as well as developing the building for its future use.

Key to the redevelopment is to sympathetically renovate the Victorian roof, create lift access to the first floor, install new boilers and toilets and reconfigure the first-floor space. This work will be completed in stages as funding permits, but we are delighted to report that funds are in place to do the first phase of this work – the installation of new toilets and boilers on the first floor. BIT have worked hard to gather vital funding from a variety of sources and while the COVID pandemic has significantly impacted progress, we can now confirm that this work will begin in January 2021. The girl guides and brownies will be delighted! It also moves us closer to our vision of a family hub.

Significant fundraising is ongoing for the necessary work on the roof and providing lift access to the first floor and reconfiguring the layout. If you would like to help us raise funds for this great local project that will benefit so many people, please contact BIT on s.spinks1@ntlworld.com.

Will Spinks



H O L M E S ~ N A D E N

I N D E P E N D E N T E S T A T E A G E N T S

CONSULT HOLMES NADEN

For Property Sales and Letting Advice



If you are thinking of selling your property, contact Holmes Naden, your local property experts, to discuss both your sale and your onward investment. Well established and trusted, our range of property from large prestige homes to tiny stone cottages changes daily. Our Rental market is thriving and we have a high demand for new landlords.

The quality of the properties and the way they are presented and marketed are key to attracting quality tenants and purchasers and achieving premium prices. All of our properties are directly matched to suit the individual requirements of tenants and buyers via email and text alerts immediately upon instruction.

Our Branch Managers, Janet Johnson and Ellis Pembrey, have excellent customer service skills, coupled with extensive experience and knowledge of the local area, which makes them a favourite choice for many local landlords and vendors. Their friendly and helpful Sales and Rental teams are busy seven days a week helping sellers, buyers, landlords and tenants alike.

Our high profile and attractive offices offer a warm welcome to prospective clients. We offer a bespoke service and, with attention to detail from start to finish, our customer care is second to none. So surely Holmes Naden must be your first 'port of call' when considering property!

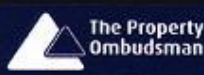
We provide a wide range of services for Rental and Sales. Please contact either Prestbury or Bollington office for a no obligation appraisal of your property.



THE VILLAGE
PRESTBURY
SK10 4DG
TEL: 01625 828254

16 HIGH STREET
BOLLINGTON
SK10 5PH
TEL: 01625 560535

lettings@holmesnaden.com
sales@holmesnaden.com





TRANSFORMATION

In March Alex messaged me for a chat and catch up. We talked about mental health and the negative effects the lockdown was having on us.

I was drinking in excess of 80 units per week and eating far too much 'beige food' with very little of the good stuff. I had been diagnosed with PTSD, anxiety and depression and was in a very dark state of mind.

I plucked up the courage to go and see Alex and Emily at AW Muscle and Fitness, and we set a challenge to help turn my destructive lifestyle around. Alex trained me, and Emily designed a personalised nutrition plan with the aim of helping me to feel better mentally, feel better about myself, and generally improve my health. I also requested that I'd like to lose 5 inches from my stomach measurement.

We decided to raise money for our chosen charity, Just Drop In.

JDI do so much to help our younger generation look after their mental health.

Within a week or two my mood was improving; my energy levels were improving, and my waist was reducing!

For many years, probably over a decade I have managed only a few hours' sleep each night and that was often broken. I now regularly have 8 hours or more and wake up feeling refreshed.

As we come to the end of the challenge, I feel so much better about myself. I've lost 8 inches from my stomach and almost 2 stone in weight. We have raised over £1100 for JDI.

Thank you so much to Alex and Emily for their support to get me through this. Also, a huge thank you to Unsworth Funeral Service for the donation of £400 towards my fundraising and thank you to you all for your support.

Andy Langdon



CORPORATE SPONSORS OF BOLLINGTON LIVE!

Bollington Live! wishes to thank our local sponsors for their essential support. They have enabled our community publication to continue into its **twenty seventh** year.

The Adelphi Group Ltd.
Cutler Cleaning Supplies
Bollington Health & Leisure

R. A. Smart Textiles
Bailey Business Park Ltd.
Bollington Town Council

Portrait Pools

Tullis Russell Coaters
Slater Harrison
Bollington Civic Society

